



Alumni
RUTHERFORD
COLLEGE



Celebrating 60 years of Rutherford College



Contents

3	Lord Rutherford
4-5	The beginnings of Rutherford College
6-7	Foundation staff and pupils
8	School logo and name change
9-12	School Records Honours Board Head Girl and Boys Athletic Records Swimming Records
13-15	Rutherford Day Speakers



Lord Rutherford

Regarded as one of the greatest of
all scientists

Ernest Rutherford was born near Nelson in 1871. Ernest was the fourth of twelve children. His mother, who believed '*all knowledge is power*', made sure her children had a good education.

After gaining three degrees at Canterbury College, Rutherford won a scholarship in 1851 and used it to study at the Cavendish Laboratory of the University of Cambridge.

In 1898 he accepted a professorship at McGill University in Montreal, returning to New Zealand briefly to marry Mary Newton, the daughter of his former landlady. It was at McGill University that Rutherford made the first major breakthrough of his career: the discovery that atoms of heavy elements have a tendency to decay. This heralded the 'carbon dating' technique still important in science today.

Rutherford returned to England in 1907 to become Professor of Physics at Manchester University. Here he produced his second breakthrough - a new model of the atom as a tiny nucleus surrounded by orbiting electrons.

During the First World War, Rutherford worked on acoustic methods of detecting submarines. Although unsuccessful, he tried to persuade the United States government to use young scientists for research rather than in the trenches. It was not his first cause. He had campaigned for women to share men's privileges at Cambridge University, and spoken up for the freedom of the British Broadcasting Corporation from government censorship.

In 1917 he had his third major breakthrough, he succeeded in '*splitting the atom*' - making him the world's first successful alchemist. This research was published in 1919, the same year he became Director of the Cavendish Laboratory.

On his final trip to New Zealand in 1925, Rutherford was received as a *national hero* and gave talks to packed halls around the country. His call for government to support education and research helped drive the establishment of the Department of Scientific and Industrial Research (DSIR) the following year.

In 1908 Rutherford received a Nobel Prize for his work on the disintegration of elements. He was knighted in 1914, decorated with the Order of Merit in 1925 and made a Baron in 1931, choosing for his coat of arms a design that included a kiwi and a Māori warrior. Many scientific institutions, streets and school houses bear his name and his image appears on the \$100 note and on a stamp issued by New Zealand Post in 2008. He is the only New Zealander to have an element - rutherfordium - named in his honour.

He died in Cambridge on October 19, 1937. His ashes were buried at Westminster Abbey, just west of Sir Isaac Newton's tomb and by that of Lord Kelvin.

Years before, in the midst of the First World War, he had expressed the hope that no one would discover how to extract the energy of the atom until man was 'living at peace with his neighbours'. The use of nuclear power, was discovered two years after his death.

Rutherford College

A brief history

West Auckland began to develop as a major suburb about 1948 and in 1960 24 acres of undeveloped land between the Te Atatu north Highway and the Northern side of Henderson creek were acquired for the construction of our school.

An open meeting was held in the Te Atatu Public Hall on June 29th 1960 and it was decided that the new Te Atatu High School would be placed under the control of its own Board of governors.



On 14th September 1960 the then Board of Governors made the significant decision to appoint Mr A.E.E Clark (ERIC) from 48 applicants as the first Principal. Because of the large number of contributing primary schools it was felt that parochialism should be avoided by naming the school after a famous New

Zealander. The name Rutherford College was suggested by Kathleen Clark Mr Clark our foundation Principals first wife.



Among the decisions to be made very early on were those relating to the school colours, crest and motto. By a unanimous decision blue and silver were selected as the school colours with red being incorporated later. The red in recent years has been removed as we link back more closely to the formative years.

The next task was to blend the colours with the emblem, the kotuku or white heron. In the springtime it was not unusual to see a number of Kotuku in the tidal estuary. In Maori legend the Kotuku guides human kind in their search for enlightenment, skill and knowledge.

The motto of Tohea, Tohea, ko te tohe o te kai which translates as Strive, strive as a you would strive for food. This was shortened to Tohea meaning Strive. Opting for a Maori whakatauki broke from the tradition of a school's motto being from Latin. This motto remains fit for purpose 60 years on.

In the Te Atatu public hall on November 28th 1960 the Board introduced staff members including Mr Roger Barton the first assistant and Mrs Pat Corston as senior mistress and displayed the new uniform.

Rutherford High School was officially opened on February 5TH 1961. On that day there was 154 third formers and 9 staff who were present. Assembly was hosted in a classroom with a group of countrified youngsters coming in from Taupaki, Whenuapai, Hobsonville and, Massey as well as our currently existing zone.

During 1961 the hazards of a new school were endured - mud and half formed paths, assemblies in classrooms. Mr Clark when interviewed many years later recalls that his lasting memory of the earliest years were unfinished buildings, no paths, no playing grounds and a sea of mud. He also talked with great pride of the energy and enthusiasm among the students and the staff. Many things may have changed but this lives on within the special wairua which we associate with being part of Rutherford College. Head Boy from 1966 Alan Sinton remembers the trips to Te Atatu park to play sport and the noise from ongoing construction. The shoe shine parades which seemed a contradiction with all the mud and dirt around.



Rutherford High School Postcard, September 1965

Foundation pupil Janet Moore (nee Coates) commented in her editorial to commemorate the 30th jubilee that she remembers to this day Eric Clarke's assertion "that the most important thing in life was to have your own self-respect, which I have tried to use as a guiding principle in my own life. It has something to do with believing in your own values and having the courage of your convictions to uphold them when challenged. In the final analysis, it is the way people behave toward one another, that is important." As the current kaitiaki of the vision, values and goals of our great school believe that this continues to underpin the philosophy and kaupapa that provides the foundation for the education we continue to strive to provide for all of our rangatahi.

The buildings kept going up and the roll reached 1510 within 7 years in 1968 and peaking at 1750 in the mid-seventies. This has fluctuated to be below 1200 and in 2021 the roll sits at 1396.

In May 1969 the first Gym was opened and a specialist block for technical and art departments. For 5 or 6 years through the early 1970's despite the building of Massey High School Rutherford was the largest school in New Zealand.

The buildings kept going up and the roll reached 1510 within 7 years in 1968 and peaking at 1750 in the mid-seventies. This has fluctuated to be below 1200 and in 2021 the roll sits at 1396.

In May 1969 the first Gym was opened and a specialist block for technical and art departments. For 5 or 6 years through the early 1970's despite the building of Massey High School Rutherford was the largest school in New Zealand.

The major building changes during the 1970s resulted from a fire in late January 1975 which completely destroyed D Block which was back then a 2 storey Nelson Block like B and C Blocks are still today. In 1981 the sports Hall at a cost of \$500,000 was built and remains a significant feature of the school through to this day. A fundraising campaign entitled the Skittle jack campaign had as a goal to raise over \$100,000 towards the construction of the sports hall. The campaign was successful with 125000 of the 500,000 required generated. The marae opened in July of 1982 and provided a home for the already rich history of kapa haka an. There was a fire in the staff and music rooms.

Through the 1970's the development of community education at Rutherford was an outstanding addition to the local community. Mr Clark following a visit overseas during 1972 had a clear vision to develop a school for the wider community. This started with the concept of evening classes but grew to include the use of existing facilities and the need for recreational opportunities for the community. Following discussions with the Te Atatu community and the Minister of Education Rutherford was designated a community school. The after school classes were and continue to remain a significant feature within the Te Atatu and wider community. It was not uncommon for over 3000 people aged between 15 and 75 to attend Rutherford each week.

Continuing education for adults included full-time day students with an average of 35 students attending from 1974 until 1980 with the peak being 45 enrolments in 1981. This second chance education made a significant difference for those wanting career changes or to pursue tertiary education. This has continued with varying numbers. The introduction of adult students simultaneously created the need for pre-school facilities at Rutherford. In 1975 the Rutherford playschool opened for children from the ages of 3-5 years old. This quickly developed under the guidance of Eileen Lonergan to become a child care centre which met a vital need in the community and continues to do so today. The Rutherford pre-school has nurtured numerous members of staff through their early childhood years.

Community Education as we are more familiar with it now started in 1976 with 63 courses and 1380 enrolments and in 1981 had 153 courses and 2495 enrolments. At the start of 1987 the Community Education Departments of Massey High School, Waitakere College and ourselves united together under the title of the Northwest Community Education.

The school pool has been part of the Rutherford since 1966. In the early days the local swim club took care of the supervision of the public swimming and the school having responsibility for the everyday testing and chlorination. The club were considering acquiring their own clubrooms. As legislation had just passed to enable non-school buildings to be erected on school grounds clubrooms or what is now the pavilion was built at the western end of the pool. These clubrooms were officially opened on February 20th 1977. The pool remained off limits for public use for many years with the advent of Health and Safety Laws dictating terms. With the help of multiple agencies and the training of student lifeguards the school pool was reopened to the public in January of 2020 and continued to be well patronised in the summer of 2021. This signalled a return to making Rutherford once again a place for our community to use and enjoy.

The marae from the early 80s became a 'centre' for alternative education options and employed 8 full time staff and had 30 students in attendance. The facility was added to with the building of additional class space behind the marae. The kohanga reo emerged from the seeds of mahi done on the marae -ening in 1984 and Rutherford was once again a leader by setting an early precedent for a Kohanga reo on a school site.

In 1983 Mr Clark retired after 24 years in the role receiving an OBE for his services to education. Mr Graham Cowley took the reigns as Principal. 1984 also saw Mr Alan Sinclair promoted to the position of Principal at Lynfield College from his senior leadership role at Rutherford.

1988 saw the release of the Picot report which was the advent of "Tomorrows schools' and the move from a Board of Governors to elected Board of Trustees. In 1988 His Excellency the Governor General the Rev. Sir Paul Reeves and Lady Reeves opened the Special Education unit as a satellite class of Arohanui Special School. There was a foundation class of twelve students and when a law change occurred in 1990 the unit now known as Turungawaewae officially became part of the school. In 1998 Rutherford became a fund holder school which allowed for Rutherford College to manage the Special Education Department with a high degree of autonomy. This allowed for the unit to offer speech language therapy, physiotherapy and occupational therapy to meet the wide range of needs of the students within the care of this department.

1986 was the last year that University entrance was offered as a formal sixth form qualification in New Zealand with Sixth Form Certificate the only formal qualification. This was also the year when June Mariu received a Queens Service medal. Rutherford hosted the inaugural Secondary schools weightlifting competition organised by Mr Rory Barrett and Mr Dave Harrop.

1988 saw the first Pacific Island group at Rutherford College. Rutherford college farewell Mr Cowley after 4 ½ years as Principal to become Principal at Wesley College. The house system was resurrected after having lapsed in

1973 with the following house names.

Mr Cliff Edmeades started as principal in January 1989 and as he said in his inaugural yearbook article that with the introduction of tomorrows schools all Principals regardless of experience were recreated equal as a result of this change in landscape.

1993 The computer Assisted learning laboratory was opened by Lockwood Smith Minister of education on February 19th Rutherford wins the mixed dragon boat final at prince's wharf. There were two major fires in the school with the fire on March 21st in Block needing significant repairs with a cost of \$100,000.

The board during 1997-1998 developed a new logo. The impetus for this was due to schools needing to be more brand conscious especially in the market place to attract international students. The board at this time acknowledged the traditions and retained the kotuku. It was recognised that the special, unique and rare white heron symbolising the potential of each individual student was a powerful symbol. The logo also included a link to the Te Atatu - the dawn. The carved logos above the hall proscenium were gifts from the Board of Trustees to commemorate the 40th reunion. They were carved by master carver Derek Kerwood from Macrocarpa. This event took place over the weekend of February 23-25th. The events and images of 9/11, September 11th and punctuated the year in a way that we would never want to see or experience again.

2002 marked the passing of our foundation Principal Mr AEE (Eric) Clark OBE who oversaw the growth of the school from 154 students in our first year of existence to over 1700. He was an innovator and created the foundations and traditions, many that live on 60 years later. Due to his vision and foresight Rutherford lead the way in many areas of the educational landscape. There was no wonder he received a standing ovation following his address at the 40th Jubilee.

Foundation

Staff and students



Back row: Barbara Nixon, B. Strid, Colleen Hagan, M. Stinton, Shirlene Diver, K.Collins, Robin Brown, D. Langdale-Hunt, Anne Butler

Middle row: B. Lawrence, T. Earl, P. Ockford, W. Jones, T. Metcalf, T. Shadbolt, G. Murdock, M. Glowacki, R. MacMillan

Front row: Janet Coates, Mr. C Reid, Mrs D. Millar, Mr. R. E. K. Barton, Mr A. E. E. Clark, Miss P. Corston, Mr. H. Berridge, Mrs. Stratford, M. McVicker



*5 February 1961
Students entering
Rutherford High
School for the school
for the first time*



As one of the 154 pupils that fronted up in February 1961, we now see a very different school to what we had in those early days.

The only buildings operational in those first months was one double story and the two technical buildings, no grass area, just a wide concrete path around the big building that we spent half our break walking around it to the left and the other half to the right for a bit of variety.

We had very strict uniform rules, for the girls a lot more so than the boys. Could never understand why the girls had to wear ties in winter time and the boys open neck shirts. We were not allowed to comb our hair in public and to this day I still don't as it was drilled into us so hard.

Being a small group, we all got to know one another really well, and over the years have had reunions, and it's like greeting long lost friends each time.

Ten years ago at the 50th reunion only 19 foundation pupils turned up, and as it was a good many years since we had had a get together, we exchanged email addresses and the hunt was then on for the remainder of the group. Since then we have managed to locate 100.

Some have passed on, some we know are close but all leads have just dried up, and the others, no one seems to have known what happened to them after the day they left school. We had our first lunch at Soljans Winery in Kumeu the following year in September 2012, and have met regularly since then.

In 2017, we requested and the school organised a tour of the school for us, and to us, it was unbelievable how it had grown so much, and the options available to the present day pupils. How fortunate are they? I ended up parking in Titoki street, and had to walk through the school, and nearly all the pupils I passed that morning said hello to me and I thought was a great friendly bunch they were. Found out later that the school had been told that there were going to be a group of oldies coming and that we were the foundation pupils. But we were still all impressed with the welcome overall.

We are grateful that this 60th reunion is being held, as with our average age of 73 years old, the chances of many of us making the 75th reunion are slim, but for the lucky few.

*Elaine Hill
Foundation Pupil*

Logo Development

School Name Change

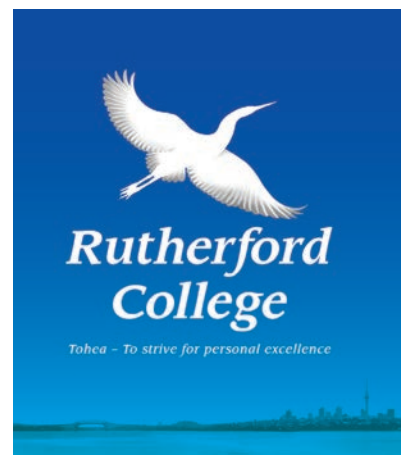
The school colours were agreed in 1961. They were blue, silver and red. The blue and silver represents the sea around Te Atatu Peninsula. The red represented the dawn. Te Atatu means "the dawn" and Te Atatu Peninsula looks out across Waitemata Harbour to Auckland City in the dawn of each morning. Fitting symbolism for students starting out on their journey to adulthood.

The emblem of a Kotuku represents the local area. Kotuku were often seen in the tidal estuary adjacent to Te Atatu Peninsula - and the school is on Kotuku Street.

The Kotutu is also a symbol of prestige, purity and uniqueness. One of the greatest compliments among Māori is to liken someone to Kotuku for it signifies everything rare and beautiful.

The next logo was developed by the Board of Trustees during 1997-1998 when Rutherford High School became Rutherford College. The school colour of red was incorporated over blue to represent dawn over the water.

In 2016 the school logo was updated to bring a fresh clean look while keeping true to its heritage.



During 1997, the need to change the school from High School to College evolved. The school needed to brand themselves for marketing purposes, including a wider international audience. The Board of Trustees decided that from 1998, the school would be known as Rutherford College.

Rutherford College

Head Girl & Boy

HEAD GIRLS

1965 Janet Coates	1993 Deborah Pollard
1966 Elizabeth Hillman	1994 Sarah Ford
1967 Margaret Wilson	1995 Janine Ying
1968 Avis Delgrosso	1996 Linda Hold
1969 Leigh Muller	1997 Joni Ying
1970 Carol Hendry	1998 Tracey Hold
1971 Alison Boniface	1999 Amanda Williams
1972 Francina Kater	2000 Shivonne Prasad
1973 Kathryn Beattie	2001 Tabitha Meharg
1974 Arihia Carrington	2002 Jenna Steel
1975 Carolyn Moore	2003 Helena Ward
1976 Ester J. Y. Juhasz	2004 Nikita Brown
1977 Moira-Wynn J. Earsman	2005 Jessica Grinter
1978 Margie Hohepa	2006 Heather Bickerton
1979 Gaylene Kurte	2007 Yvia Magan
1980 Mandy Mathews	2008 Rose He
1981 Janine Robson	2009 Chelsea Robinson
1982 Terangi Teteina	2010 Michelle Lee
1983 Jane Horder	2011 Elina Osborne
1984 Siala Uepa	2012 Allannah Prins
1985 Tracey Nathan	2013 Zazi Gohar
1986 Leslie Pinker	2014 Angelia Maligi
1987 Debbie Berry	2015 Niamh Swannack
1988 Mandy Vanderwee	2016 Georgina Muller
1989 Rachel Bailey	2017 Shelley Huggins
1990 Denise Skewes	2018 Jane Lee
1991 Michelle Morton	2019 Fiona Blaser
1992 Angela Stanton	2020 Lara Craigie

HEAD BOYS

1965 M.J. McVicker	1993 W. Angland
1966 M.P. Sinton	1994 S.Bridges
1967 T.R. Swallow	1995 V.Bentley
1968 K.R. Carrington	1996 A.Soh
1969 G.R. Shanaghan	1997 N. Mather
1970 P.A. Hay	1998 William Cheong
1971 R. C. Carrington	1999 George Taunga
1972 D. J. Kerr	2000 Paul Erbs
1973 G.M. Pascoe	2001 Adrian Soh
1974 D.J. Wyness	2002 Ryan Lewell
1975 D.J. Kean	2003 Andrew Wadsworth
1976 R. J. Lovering	2004 Niven Prasad
1977 S. J. Millwood	2005 Ryan Benjamin
1978 J. Nuualiitia	2006 Calum Anderson
1979 P. B. Davey	2007 Chen Liu
1980 S. W. King	2008 Luke Sizer
1981 D.B. Gilbert	2009 Gannin Bell
1982 D.M. Tawhiti	2010 Caleb Van Beynen
1983 F. J. Nuualiitia	2011 Dean Lupton
1984 D.J. Wilkinson	2012 Nathaniel Kandregula
1985 J. Paterson	2013 Terry Shaw
1986 M.Kelderman	2014 Renata Tobin-loane
1987 S. Natanielu	2015 Mitchell Bridges
1988 K.Dwight	2016 Thomas Banks
1989 A.Martin	2017 Sang Hyun Kim
1990 E.Tuitupou	2018 Rueben He
1991 L.Evans	2019 Matthew Darrah
1992 K.Soh	2020 Harrison Chapman

Rutherford College

Honours Board

DUX LUDORUM

1965 T.J. Moorhead	1993 Raelene Selwyn
1966 T. J. Moorhead	1994 Michael Vicelich
1967 Yvonne Willering	1995 Fiona Mather
1968 K. R. Carrington	1996 Laura Bakker
1969 G. R. Shanaghan	1997 Nigel Mather
1970 P. M. Connoly	1998 Carl Shields
1971 I. C. Hay	1999 George Taunga
1972 Deborah Riley	2000 Krystal Forgesson
1973 Deborah Riley	2001 Adrian Soh
1974 Dianne Hollingsworth	2002 Huia Cooke
1975 T. M. Waitai	2003 Niven Prasad
1976 G. B. Dewes	2004 Niven Prasad
1977 S. M. Philip	2005 Ashley Old
1978 P. G. Dixon	2006 Tukutahi Happy
1979 E. Pou	2007 Samantha Roebeck
1980 M. B. Dixon	2008 Thomas Ah Van
1981 Andrea Crowther	2009 Simona Sekulova
1982 Joanne Minchin	2010 Manaia Babbington
1983 Amelia C. Sakaria	2011 Dean Lupton
1984 R. Hunt	2012 Toni James
1985 Kim Peterson	2013 Adel Van Der Walt
1986 Rachael Sinclair	2014 Brahm Richards
1987 S. Natanielu	2015 Brahm Richards
1988 J. Edgecombe	2016 Cameron Brown
1989 Nerida Phillips	2017 Cameron Brown/ Abigail Urlich
1990 Nerida Phillips	2018 Mollie Tagaloa
1991 Trish Awhimate	2019 Mollie Tagaloa
1992 Andrew Mutton	2020

DUX LITTERARUM

1965 R. A. McMillian
1966 Susan Gotts
1967 Dorothy Faed
1968 M. R. Stratful
1969 R. J. Knappstein
1970 Heather Lucus
1971 Linley Thompson
1972 M. T. Sharman
1973 D. A. Snow
1974 B. D. Palmer
1975 Margaret Leber
1976 Eva Juhasz
 P. McLaughlin
1977 R. P. Morley
1978 J. A. Corban
1979 P. E. Carr
1980 M. J. Savage
1981 D. A. Francis
1982 Joanne Minchin
1983 Mei Chee Chiang
1984 A. Van Dolleweed
1985 P. Burkinshaw
1986 M. Nash, C. Bradley
1987 M. Brownlee, M. King
1988 V. Dirks
1989 Sean Wei Lim
 S. McKee
1990 Paul Dean
1991 Keith Colvine
1992 Sarah Bastin

1993 Chen Yu Leu
1994 Bee Ean (Elicia) Soh
1995 Murray Dixon
1996 Kristin McMahon,
 Alvin Soh Kevin Luong
1997 Hae Min Kim
1998 Ken Peng
1999 Shivonne Prasad
2000 Jonathan Pollard
2001 Hong Li
2002 Andrew Olsen
2003 Thomas Essex
2004 Emily Boyd
2005 Pita Hohepa
2006 Chen Liu
2007 Luke Sizer
2008 Gannin Bell
2009 Faber Edwards
2010 Naum Naumovski
2011 Chahat Chawla
2012 Utsav Patel
2013 Carlin Osborne
 Peter Robinson
2014 Oxana Repina
2015 Vishal Iamnadas
2016 Sang Hyun Kim
 Rawiri Hohepa

[2018 Reuben He](#)

[2019 Maggie Le](#)

DUXARTIUM

1993 Kiri Key
1994 Jackie Grey
1995 Lisa Morris
1996 Joshua Williams
1997 Nigel Mather
1998 William Cheong
1999 Rawiri Waititi
2000 Paul Erbs
2001 Tabitha Meharg
2002 Jenna Steel
2003 Kiri Tamihere
2004 Naomi Matthewman
2005 Ryan Benjamin
2006 Calum Anderson
2007 Micaela Cole
2008 Aonghas Anderson
2009 Kawana Waititi
2010 Faber Edwards
2011 Jorginio October
2012 Sam Spackman
2013 Xavier Breed
2014 Petmal Lam
2015 Niamh Swannack
2016 Jarrod Klooster
2017 Sang Hyun Kim
2018 Tiana Maihi
2019 Rachel Jeung-McLntyre

Rutherford Day

An Annual Tradition

Of all the special events in our school calendar Rutherford day remains the most special of these events the first of which dates back to 1963. The purpose or philosophy was that a day should be set aside to remember Lord Ernest Rutherford the Nobel prize winner who our school is fortunate to be named after.

Rutherford day is also a time for offering hospitality and manaakitanga to the friends of the school who through their deeds and actions have enriched the educational experiences of students. We also welcome back former staff to honour their contribution may who gave long service to our community. Those who have been part of Rutherford day will know that a formal procession starts the proceedings followed by an address from the Principal and an address by a guest speaker.

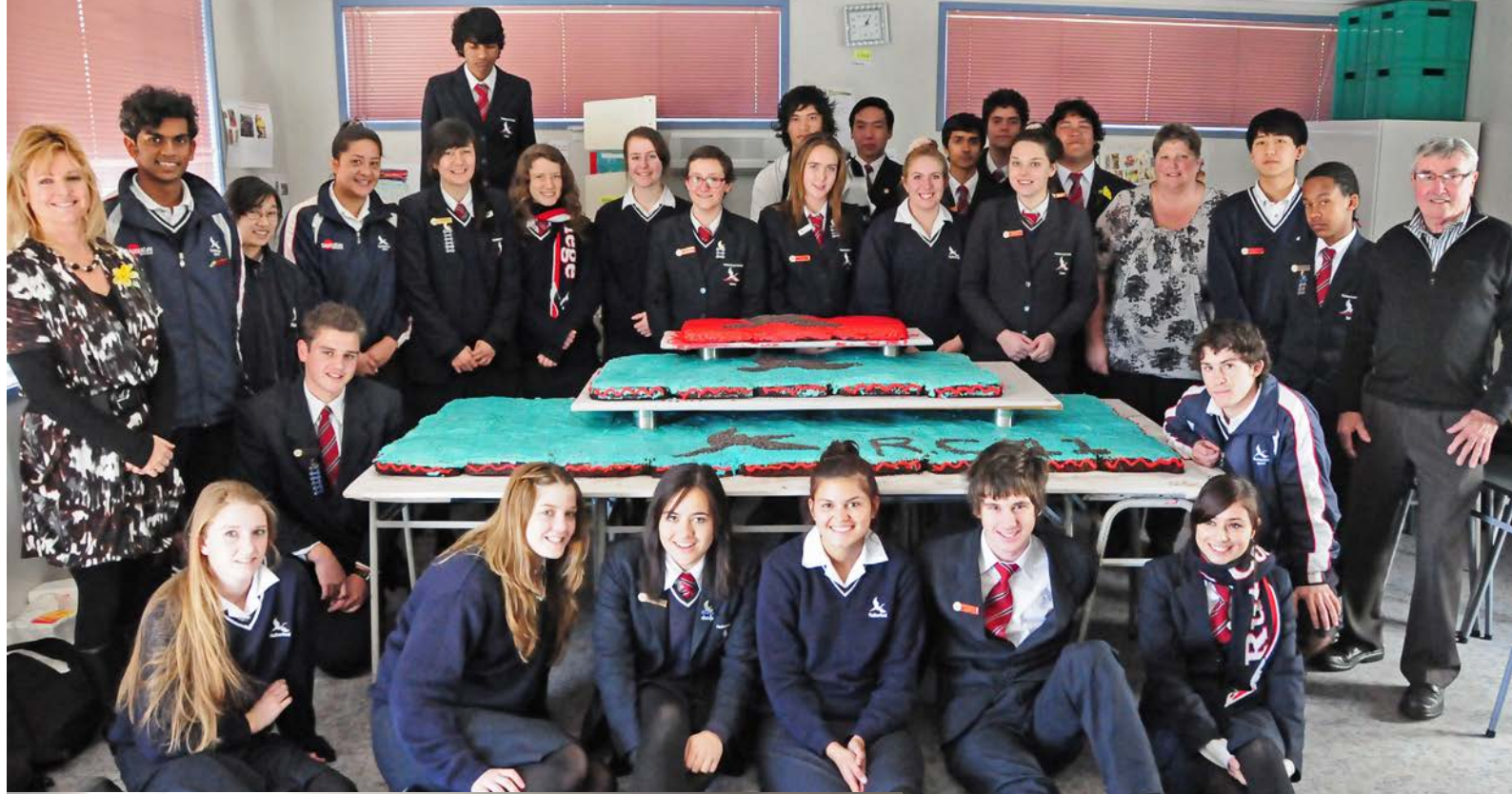
There are performances from talented students and always since 1978 Te Kotuku Kapa haka perform and this includes the performing of Me Huihui written by Sir Pita Sharples dedicated to Mrs Kathleen Clark.

At the conclusion of the ceremony students are released for a half day holiday and staff and guest enjoy a luncheon together. Rutherford day itself and now the extension to a full week long process emphasises the special wairua and spirit that exists at Rutherford College.

The list of guest speakers which is included in this 60th jubilee commemorative booklet and the mana that they hold across Aotearoa is further proof of the dignity and taonga that this event is for our kura.



Rutherford Day speaker, Steve Price with Prefects, 2010



Rutherford Day *Speakers*



Sir Ernest Marsden
1963



Sir Douglas Robb
1964



Hon. Sir Walter Nash
1965



Professor John C. Reid
1966



Sir Edmund Hillary
1967



Hon. Sir Ronald Algie
1968



Sir Guy Powles
1969



Rt Rev. Bishop
E. A. Gowing
1970



Professor P.H. Fowler
1971



Sir Dove-Meyer Robinson
1972



Hon. Dr A.M. Finlay
1973



Rt Hon. Brian Talboys
1974



Rt Hon. W.E. Rowling
1975



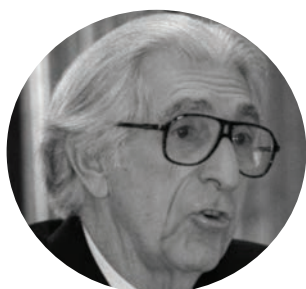
Miss Denese Henare
1976



Hon. L.W. Gandar
1977



Mr Gordon Dryden
1978



Sir Ronald Davison
1979



Dame Catherine Tizard
1980



Archbishop Paul Reeves
1981



Sir David Beattie
1982



Ihakara Puketapu
1983



Dr Michael Bassett
1984



The Hon. Koro
Tainui Wētere
1985



Miss Yvonne Willering
1986

Rutherford Day *Speakers*



Walter Hirsh
1987



Lt Gen. Sir J.A Mace
1988



Dr David and
Mrs Rebecca Chaplow
1989



Dame Georgina Kirby
1990



Mr John Bracewell
1991



Ms Joanna Paul
1992



Ms Penny de Valk
1993



Mr Ian Grant
1994



Mrs June Mariu
1995



Ms Judy Bailey
1996



Mr Michael Jones
1997



Mrs Carol Hirschfeld
1998



Tom Schnackenberg
1999



Mr Paul Kingsman
2000



Mrs Merepeka
Raukawa-Tait
2001



Mr Simon Bridges
2002



Mrs Pauline Grogan
2003



Dr Cindy Kiro
2004



Mr James Sinclair
2005



Mr Alan Barber
2006



Mr Dent Kent
2007



Rt Hon. Helen Clark
2008



Sir Paul Holmes
2009



Mr Steve Price
2010

Rutherford Day *Speakers*



Mr Billy Graham
2011



Mr Oscar Kightley
2012



Shelley Campbell
2013



Kevin Biggar
2014



Jimi Hunt
2015



William Pike
2016



Pio Terei
2017



Sir Pita Sharples
2018



Hilary Barry
2019



Covid 19
2020

Rutherford College

Athletic Record

100m

Junior Girls	Zoe Taylor	12.69s	2015
Junior Boys	Jesse Schwalger	12.43s	2020
Intermediate Girls	C. Stainton	12.7s	1970
Intermediate Boys	J. Ngamotu	11.1s	1972
Senior Girls	C. Stainton	12.4s	1971
Senior Boys	R. Carrington	11.2s	1971

200m

Junior Girls	D. Hollingworth	27.0s	1972
Junior Boys	Jesse Schwalger	25.69s	2020
Intermediate Girls	C. Stainton	27.0s	1970
Intermediate Boys	D. Simpson	24.0s	1982
Senior Girls	C. Stainton	25.8s	1971
Senior Boys	R. Carrington	23.5s	1971

300m

Junior Girls	Emily Muspratt	47.47s	2018
Junior Boys	Jesse Schwalger	44.18s	2020

400m

Junior Girls	H. Hawley	01:04.9	1982
Junior Boys	P. Dean	59.7s	1986
Intermediate Girls	D. Roby	59.6s	1975
Intermediate Boys	A. Barbour	54.7s	1979
Senior Girls	H. Hawley	01:02.1	1985
Senior Boys	R. Carrington	53.5s	1971
	R. Lucas	53.5s	1972

800m

Junior Girls	A. Lupi	02:44.7	1981
Junior Boys	S. Wilson	02:03.1	1992
Intermediate Girls	R. Sinclair	02:41.0	1985
Intermediate Boys	P. Connolly	02:10.6	1970
Senior Girls	K. Petersen	02:29.5	1983
Senior Boys	T. Weatherall	02:00.7	1968

1500m

Junior Girls	J. Minchin	05:35.3	1978
Junior Boys	J. Edgecumbe	05:00.6	1985
Intermediate Girls	L. Wain	05:24.5	1976
Intermediate Boys	C. Neale	04:29.3	1988
Senior Girls	K. Petersen	05:27.2	1983
Senior Boys	D. Soljan	04:23.8	1986

3000m

Junior Girls			
Junior Boys	Brahm Richards	11:41.0	2011
Intermediate Girls	Caitlin Lorigan	13.48.0	2015
Intermediate Boys	Dino Botica	12.16.09	2015
Senior Girls	Elina Osborne	13:52.0	2011
Senior Boys	Khirthan Sanjiva	11:11.0	2011

80m Hurdles

Junior Girls	N. Lamkan	15.4s	1992
	R. McGregor	15.4s	
Junior Boys	E. Alaalii	15.1s	1999
Intermediate Girls	N. Lamkan	15.9s	1995
Intermediate Girls	Huia Cooke	15.9s	2001

100m Hurdles

Junior Girls	J. Robson	16.9s	1978
Junior Boys	B. Lee	14.6s	1992
Intermediate Girls	H. Hawley	16.0s	1984
Intermediate Boys	J. Ngamotu	16.1s	1992
Senior Girls	Krystal Forgessen	21.9s	1999
Senior Boys	A. Balawa	18.03s	1999

110m Hurdles

Intermediate Boys	J. Storr	17.0s	1977
Senior Girls	H. Hawley	15.1s	1985
Senior Boys	B. Ake	15.4s	1981

70m Hurdles

Junior Girls	Huia Cooke	13.12s	1998
--------------	------------	--------	------



Rutherford College

Swimming Record

1 LENGTH FREESTYLE

Junior Girls	Lily Yang	21.44	2011
Junior Boys	Ocean Micheal	20.22	2020
Intermediate Girls	Anahera Hakiaha	20.62	2012
Intermediate Boys	Dominik Bonkovich	19.75	2020
Senior Girls	Alannah Prins	21.25	2012
Senior Boys	Ethan Hadley-Jensen	16.18	2011

1 LENGTH BACKSTROKE

Junior Girls	Lily Yang	26.06	2011
Junior Boys	Ryan Sabich	24.00	2013
	Seldon Rogerveen	24.00	2013
Intermediate Girls	Anahera Hakiaha	21.09	2011
Intermediate Boys	Andrew Young	22.15	2020
Senior Girls	Alexandria Murray	23.88	2020
Senior Boys	Zac DE Freitas	21.37	2016

2 LENGTHS FREESTYLE

Junior Girls	Lily Yang	49.03	2011
Junior Boys	Ocean Mitchael	45.44	2020
Intermediate Girls	Anahera Hakiaha	45.00	2011
Intermediate Boys	Dominik Bonkovich	40.22	2020
Senior Girls	Alexandria Murray	46.38	2020
Senior Boys	Ethan Hadley-Jensen	41.00	2011

2 LENGTHS BACKSTROKE

Junior Girls	Lily Yang	58.53	2011
Junior Boys	Ocean Michael	59.71	2020
Intermediate Girls	Anahera Hakiaha	50.59	2012
Intermediate Boys	Brahm Richards	56.00	2012
Senior Girls	Alannah Prins	52.12	2012
Senior Boys	Brahm Richards	53.43	2014





1961 - 1970

Principal: Mr Clark 1961 - 1984

Highlights

- 1961 School Opens 5 February
154 students, 9 staff
Rangitoto Island trip
- 1963 First Rutherford Day
- 1964 Queens Carnival
- 1966 School pool opens
Inaugural Form VI dinner
- 1968 New library opens
School roll reaches 1510
- 1969 First school council formed
First school ball 22 August
Team teaching block opens
Gymnasium opens
- 1970 Maori culture group formed



Rutherford Day Speakers

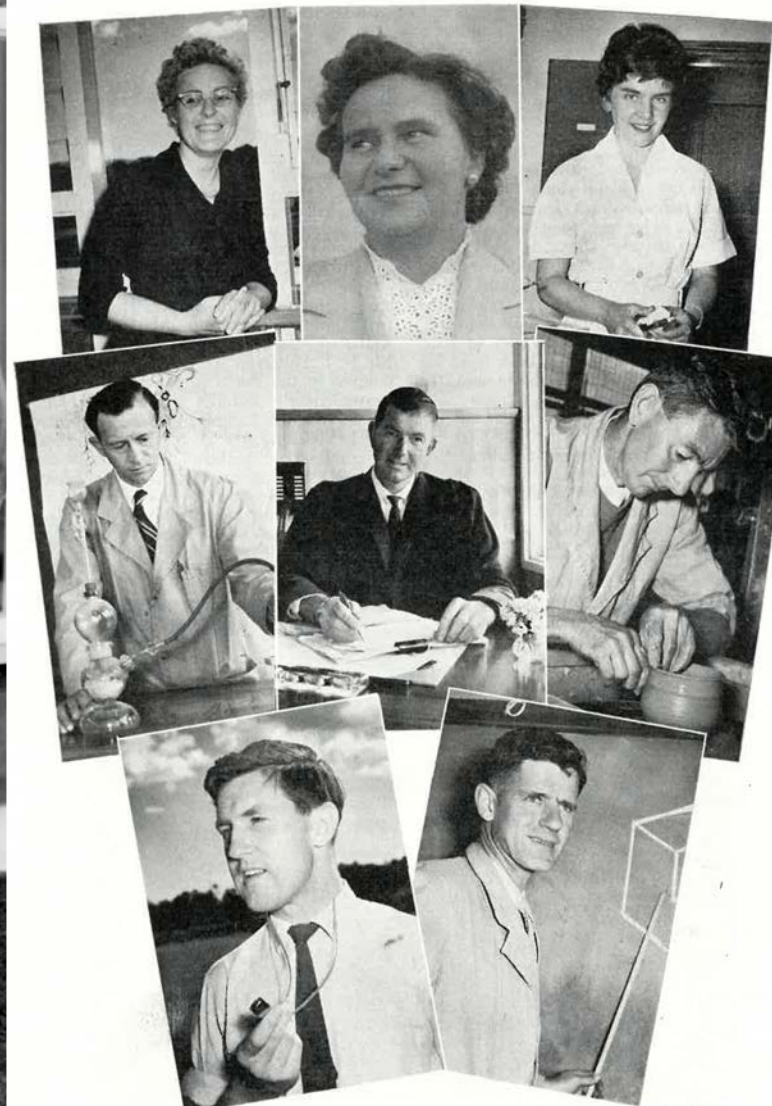
- 1963 Sir Ernest Marden
- 1964 Sir Douglas Robb
- 1965 Sir Walter Nash
- 1966 Dr John Reid
- 1967 Sir Edmund Hillary
- 1968 Sir Ronald Algie
- 1969 Sir Guy Powles
- 1970 Rev Bishop Gowing

Productions

- 1964 Charley's Aunt
- 1965 A Miracle of St Anthony
- 1966 Harlequinade
- 1967 Pirate Ship Petticoat
Trial by Diary
- 1968 The Jar
- 1969 Mikado
- 1970 Romanoff and Juliet



**RUTHERFORD
HIGH SCHOOL
YACHTING CREW
1962**



TOP ROW: Mrs D. I. MILLER Miss P. M. CORSTON Miss R. M. HODGES
MIDDLE ROW: Mr M. M. WHITE Mr R. E. K. BARTON Mr D. C. REID
BOTTOM ROW: Mr D. D. FINNIGAN Mr H. G. BERRIDGE





1971 - 1980

Principal: Mr Clark 1961 - 1984

Highlights

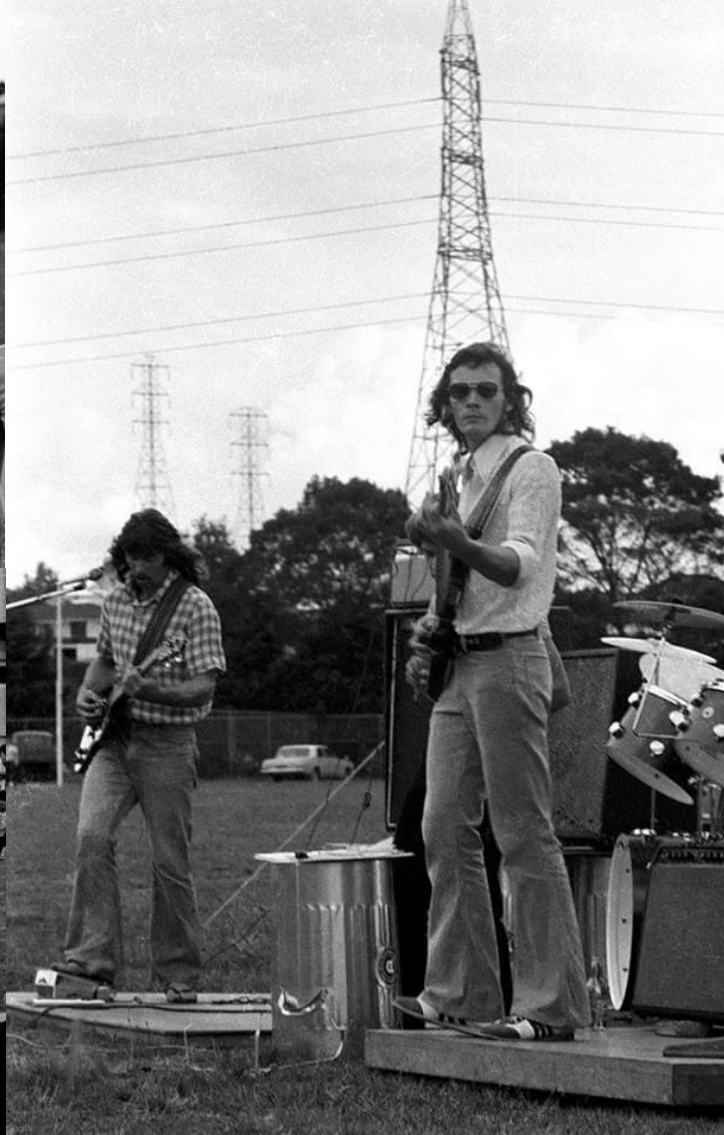
- 1971 7th form allowed to wear mufti
Fiji school trip
- 1973 Film Society established
- 1974 Community Education established
Rutherford Playschool opens
New darkroom in Art department
- 1975 D Block burns to the ground
New Caledonia trip
- 1976 Australian field trip
- 1977 Noumea field trip
- 1978 Arson fire in Admin block
- 1979 Polynesian group champions
at the Polynesian festival
- 1980 Sports hall opens
Polynesian group champions,
at the Polynesian festival

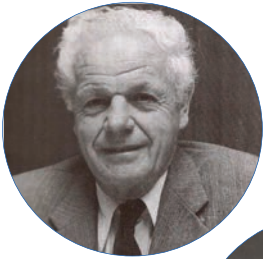
Rutherford Day Speakers

- 1971 Professor P. H. Fowler
- 1972 Sir Dove-Myer Robinson
- 1973 Dr A. M. Finlay
- 1974 Rt Hon. Brian Talboys
- 1975 Rt Hon. W. E. Rowling
- 1976 Miss Denese Henare
- 1977 Hon. L.W. Gandar
- 1978 Mr Gordon Dryden
- 1979 Sir Ronald Davison
- 1980 Dame Catherine Tizard

Productions

- 1971 The Pirates of Penzance
- 1972 The Little Red Schoolhouse
- 1976 Fiddler on the Roof
- 1977 Camelot
- 1978 Joseph and the Amazing
Technicolour Dreamcoat
- 1979 Jesus Christ Superstar
- 1980 Westside Story





1981 - 1990



Principals: Mr Clark 1961 - 1984

Mr Cowley 1984 - 1988

Mr Edmeades 1989 - 2006



Highlights

- 1981 Sports Hall opens 6 November
Polynesian group champions
at the Polynesian festival 3rd year
in a row.
- 1982 Work Skills Centre established
Polynesian group champions
at the Polynesian festival 4th year
in a row.
Computer room set up
- 1983 Staff room fire
Mr Clark receives O.B.E
- 1984 Mr Clark retires after 24 years
Te Kohanga Reo opens
- 1985 Polynesian group champions
at the Polynesian festival
Polynesian group trip to L.A
- 1987 Toilet block fire
- 1988 Special Needs unit opens
Australia school trip
- 1990 Opening of Pre-school

Rutherford Day Speakers

- 1981 Sir Paul Alfred Reeves
- 1982 Sir David Stuart Beattie
- 1983 Dr Ihakara Puketapu
- 1984 Dr Michael Bassett
- 1985 The Hon. K.T. Wetere
- 1986 Yvonne Willering
- 1987 Walter Hirsh
- 1988 Lt Gen. Sir J.A. Mace
- 1989 Dr David and
Mrs Rebecca Chaplow
- 1990 Dame Georgina Kirby

Productions

- 1980 Godspell
- 1982 Caberet
- 1983 Oliver
- 1984 My Fair Lady
- 1985 Fiddler on the Roof
- 1986 The Pirates or Penzance
- 1987 Joseph and the Amazing
Techni-colour Dreamcoat
- 1988 Kiss me Kate



1991 - 2000

Principals: Mr Edmeades 1989 - 2006

Highlights

- 1991 Rutherford College 30th anniversary
- 1993 C Block fire
Computer Learning Centre opens
Taumaranui National Competition,
Te Ropu Kotuku 1st place
- 1994 Student Taungaroa Emile stars as
"Boggie" in Once Were Warriors
- 1995 Internet installed
Peer support introduced
- 1998 Te Ropu Kotuku represent NZ
youth in South Africa
- 1999 Inaugural Sports Dinner

Rutherford Day Speakers

- 1991 Mr John Bracewell
- 1992 Ms Joanna Paul
- 1993 Ms Penny Devalk
- 1994 Mr Ian Grant
- 1995 Mrs June Mariu
- 1996 Ms Judy Bailey
- 1997 Mr Michael Jones
- 1998 Mrs Carol Hirschfeld
- 1999 Mr Tom Schnackenberg
- 2000 Mr Paul Kingsman

Productions

- 1991 Your a Good Man Charlie Brown
- 1993 Oliver
- 1995 Joseph and the Amazing
Technicolour Dreamcoat
- 1996 Big River
- 1997 Pirates of Penzance
- 1998 My Fair Lady
- 1999 Jesus Christ Superstar



2001 - 2010



Principals: Mr Edmeades 1989 - 2006
Mr Moore 2006 - current

Highlights

- 2001 Rutherford College 40th Jubilee
- 2002 International Village created
Foundation principal Mr Clark
passes away
- 2003 Technology building upgrade
- 2004 School trip to Samoa
- 2006 Mr Edmeades retires after 18 years
Mr Moore appointed new Principal
Information Commons opened
School trip to Japan
- 2007 First annual scholar's assembly
School uniform modified
- 2008 School trip to China
- 2009 Associate Principal, Mr Coughlan
retires after 40 years of service
New Science block
- 2010 B Block refurbished

Rutherford Day Speakers

- 2001 Mrs Merepeka Raukawa-Tait
- 2002 Mr Simon Bridges
- 2003 Mrs Pauline Grogan
- 2004 Dr Cindy Kiro
- 2005 Mr James Sinclair
- 2006 Mr Alan Barber
- 2007 Mr Dean Kent
- 2008 Rt Hon. Helen Clark
- 2009 Sir Paul Holmes
- 2010 Mr Steve Price

Productions

- 2000 The Caucasian Chalk Circle
- 2001 Footroot Flats
- 2003 Westside Story
- 2007 Joseph and the Amazing
Technicolour Dream Coat
- 2008 For Today
- 2010 Oliver



2011 - 2021

Principal: Mr Moore 2006 - current

Highlights

- 2011 Rutherford College 50th Jubilee
C Block refurbished
- 2014 ICT - ultra fast broadband
Industrial kitchen completed in
Technology block
Music, Dance and Drama
rooms refurbished
Music recording studio built
- 2015 PB4L programme started
Four core values established
- 2016 Full re-branding of school
Infamous Maori Cupid
School joins Kahui Ako partnership
Whole school exterior painted
Special Education unit officially
renamed Turungawaewae
- 2017 Te Kotuku honours ceremony
D block - Science rooms upgraded
Electronic sign out front of school
- 2018 Laser cutting suite installed in
Technology block
- 2019 The batters (tiered seating)
covered for protection from
weather conditions
- 2020 Covid 19 pandemic

Rutherford Day Speakers

- 2011 Mr Billy Graham
- 2012 Mr Oscar Kightley
- 2013 Ms Shelley Campbell
- 2014 Mr Kevin Biggar
- 2015 Mr Jimi Hunt
- 2016 Mr William Pike
- 2017 Mr Pio Terei
- 2018 Sir Peter Sharples
- 2019 Mrs Hilary Barry

Productions

- 2012 Disco Inferno
- 2013 The Wedding Singer
- 2014 Arabian Nights
- 2016 Dracula















