

# RUTHERFORD COLLEGE

## Senior Courses 2023



Name: \_\_\_\_\_

Tutor Class: \_\_\_\_\_

# CONTENTS PAGE

| Page    |   |
|---------|---|
| 3       | How to choose your subjects               |
| 4       | Qualifications                            |
| 5       | Vocational Pathways Awards                |
| 6 - 7   | University Entrance                       |
| 8       | Student Pathway – What is my Pathway?     |
| 9 - 11  | Year 11 – 13 Information                  |
| 12 - 13 | Course Progressions                       |
| 14 - 21 | The Arts                                  |
| 22 - 26 | English, ESOL and Media Studies           |
| 27 - 31 | Health and Physical Education             |
| 32 - 35 | Languages                                 |
| 36 - 39 | Mathematics                               |
| 40 - 45 | Science                                   |
| 46 - 52 | Social Sciences                           |
| 53 - 56 | Te Ao Maori                               |
| 57 - 69 | Technology                                |
| 70      | Early Childhood Development               |
| 71      | Gateway                                   |
| 72      | Police and Uniformed Services Prep Course |
| 73      | Skills Pathway                            |
| 74 - 76 | Vocational Academies                      |

## THE TIMELINE FOR CHOOSING

| Key Date                                    | What is happening   | What I have to do   |
|---|---|---|
| <b>Week 4: 15-19 August</b>                 | Options week<br>Exploring Options and Careers   | Work with your Tutor teacher looking at possible subjects – using the online Senior Option Handbook and online Course Selection in the KAMAR Student Portal |
| <b>THURSDAY 18 AUGUST<br/>2.00 – 8.00pm</b> | <b>Interviews</b> at school for students and their Caregivers to discuss report and 2023 Options Careers Expo in Hall | Students and Caregivers to attend 2.00 – 8.00 pm  |
| <b>THURSDAY 25 AUGUST</b>                   | Online Course Selection in the KAMAR Student Portal will be closed to all students at 3pm.                            | Finalise your courses for 2023. You will be able to change choices online up until this date.   |

# HOW TO CHOOSE YOUR SUBJECTS

|               | What do I need to do?   | I have done this ✓ and Date | Tutor Teacher Check ✓ |
|---------------|---|-----------------------------|-----------------------|
| <b>Step 1</b> | What subjects do you enjoy studying?<br>Think of the subjects you achieve well in.  |                             |                       |
| <b>Step 2</b> | Ask your subject teachers:<br>Do they recommend you continue with the subject?<br>Are you on track to meet the pre-requisites or entry requirements?  |                             |                       |
| <b>Step 3</b> | Discuss your choices with your Parents/Caregivers.<br>Please take note of the costs involved.<br><i>If you would like to discuss this with Mrs Reid, make an appointment at Careers, 834 3305</i>   |                             |                       |
| <b>Step 4</b> | <b>Check:</b><br>Do your choices fit in with possible subjects in the years to come?<br><i>Check the course progression page on pages 12 – 13.</i><br><i>Some subjects require you to have studied the subject previously or the year before</i>  |                             |                       |
| <b>Step 5</b> | <b>Check:</b><br>Do your subject choices expand or narrow possible career choices for you?  |                             |                       |
| <b>Step 6</b> | <b>Check:</b><br>If you are planning to go to Tertiary, do your subject choices ensure you are eligible to apply for the course you might like to study?  |                             |                       |
| <b>Step 7</b> | <b>Check:</b><br>Have you made the right choices for yourself?<br><i>Remember you can talk your choices over with Careers advisors, Parents/Caregivers, Tutor teachers, Teachers, Heads of Department, Deans, Guidance Counsellors.</i><br><b>Attend Option Evening THURSDAY 18 AUGUST.</b> |                             |                       |
| <b>Step 8</b> | Choose the subjects you want to do next year in the KAMAR Student Portal Course Selection.  |                             |                       |

# QUALIFICATIONS

| Certificate/Qualification  | Credits required  | Compulsory                       |
|--|---|----------------------------------|
| National Certificate in Educational Achievement NCEA - Level 1   | 80 from Level 1 or above  | 10 in Numeracy<br>10 in Literacy |
| National Certificate in Educational Achievement NCEA - Level 2   | 20 carried over from Level 1  | 60 at Level 2 or higher          |
| National Certificate in Educational Achievement NCEA - Level 3   | 20 carried over from Level 2  | 60 at Level 3 or higher          |
| University Entrance  | <ul style="list-style-type: none"><li>• 60 credits at Level 3 or higher</li><li>• 14 from one Approved subject</li><li>• 14 from another Approved subject</li><li>• 14 from a third Approved subject</li><li>• 10 Level 1 Mathematics or higher</li><li>• 5 credits Level 2 Reading or higher</li><li>• 5 credits Level 2 Writing or higher</li></ul> |                                  |
| Scholarship Examinations   | Separate Scholarship examination with monetary prizes. Details available Year 13 Dean. Available for the TOP academic students only.  |                                  |
| Entrance to Polytechnics   | Most certificate courses require Candidates to have Level 1 and more are asking for Level 2.<br>Diploma courses require Level 2.<br>All Degree courses require Level 3, UE and more.  |                                  |
| Course Endorsement all Levels<br><i>i.e. for possible each of the 5/6 courses you take</i>   | Requires 14 credits (from any one subject) to be achieved at the higher Level of M or E. Of the 14, at least 3 must be from internal and at least 3 from external assessments.  |                                  |
| Certificate Endorsement all Levels<br><i>i.e. for your overall performance at Level 1,2,3</i>  | At least 50 credits (from any standards from any subject) to be achieved at the higher levels of M or E.  |                                  |
| Other National Certificates and Awards Level 2   |   |                                  |
| National Certificate in Building, Construction and Allied Trades Skills<br>National Certificate in Engineering<br>Vocational Pathways Awards | Refer to the appropriate HOFs/TICs for details.<br><br>Refer to next page   |                                  |

## UNIVERSITY ENTRANCE LITERACY

UE Literacy can be achieved in a wide range of subjects. For this reason, we have identified UE Literacy credits in the following way:

\* R = Reading credits

\* W = Writing credits

\* R/W = Reading and Writing credits

# WHAT ARE VOCATIONAL PATHWAYS?

The Vocational Pathways provide new ways to achieve NCEA Level 2. These pathways will let you see how learning and achievement will be valued in the workplace. They will also suggest the types of study options and job opportunities available to learners.

**Employers will be able to see learner strengths, abilities, interests and achievements when they look at the Vocational Pathways information.**

**Vocational Pathways Profile:** The Vocational Pathways Profile is a visual graph that shows learners' achievement against the Vocational Pathways. A learner will be able to see their progress and identify where they need to raise their level of achievement. This will help learners when planning their courses for the following year. Learners will be able to check that their course selections provide the pathways they need to achieve their goals. Learners can see their Vocational Pathways Profile whenever they use their learner login

## **Vocational Pathways Awards:**

To achieve the Vocational Pathways Award, a learner must:

- Achieve NCEA Level 2 which includes literacy (10 credits) and numeracy (10 credits) at Level 1 or above, and
- Achieve 60 x Level 2 credits from the Recommended Assessment Standards for a Vocational Pathways, including 20 x Level 2 credits from Sector-Related standards for the same sector. **Credits from the Recommended Assessment Standards and Sector-Related Standards must come from the same Vocational Pathways e.g Service Industries**

A learner can achieve more than one Vocational Pathways Award if they complete more than one Vocational Pathway.

A learner can see any Vocational Pathways Award they have achieved through the learner login. Achievement is recorded on the learners' Record of Achievement.

## **Vocational Pathways Sector Related Standards offered at Rutherford College 2023**

*The following subjects offer at least 20 level 2 credits from sector-related standards.*

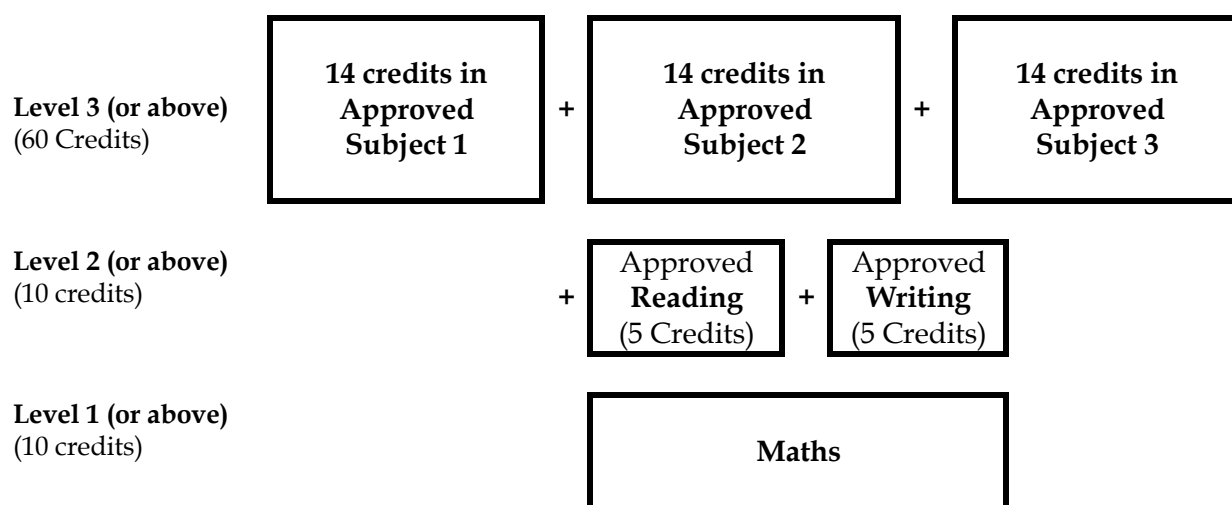
| <i>Year 12 Subject:</i> | <i>Sector/Industry</i>          |
|-------------------------|---------------------------------|
| Electronics             | Manufacturing and Technology    |
| Engineering             | Manufacturing and Technology    |
| Computer Programming    | Manufacturing and Technology    |
| Building                | Construction and Infrastructure |
| Early childhood         | Social and Community            |
| Travel & Tourism        | Service Industries              |
| Hospitality             | Service Industries              |
| Art                     | Creative Industries             |
| Art Design              | Creative Industries             |
| Art History             | Creative Industries             |
| Art Photography         | Creative Industries             |
| Dance                   | Creative Industries             |
| Drama                   | Creative Industries             |
| Music                   | Creative Industries             |
| Media Studies           | Creative Industries             |
| Classical Studies       | Creative Industries             |
| Graphics                | Creative Industries             |
| Computer Programming    | Creative Industries             |

# UNIVERSITY ENTRANCE

## NCEA Minimum requirements for University Entrance

- Achievement of NCEA Level 3 – 60 credits at Level 3 or higher (and 20 credits at Level 2 or higher)
- 14 credits in each of the three subjects from the list of approved subjects
- The remaining credits to achieve NCEA Level 3 may come from either achievement or unit standards
- UE numeracy – 10 credits at Level 1 or higher from specified achievement standards or three specific numeracy unit standards
- UE literacy – 10 credits (five in reading and five in writing) from specific Level 2 and 3 Achievement Standards across a wide range of subjects. For this reason, we have identified UE Literacy credits in the following way:

\* R = Reading credits\* W = Writing credits\* R/W = Reading and Writing credits



## APPROVED SUBJECTS

|  |                              |                             |
|--|------------------------------|-----------------------------|
| Accounting                                 | Economics                    | Painting (Practical Art)    |
| Agriculture & Horticulture                 | Education for Sustainability | Photography (Practical Art) |
| Biology                                    | English                      | Physical Education          |
| Business Studies                           | French                       | Physics                     |
| Calculus                                   | Geography                    | Printmaking (Practical Art) |
| Chemistry                                  | German                       | Processing Technologies     |
| Chinese                                    | Health Education             | Psychology                  |
| Classical Studies                          | History                      | Religious Studies           |
| Construction and Mechanical Technologies   | History of Art               | Samoan                      |
| Cook Islands Maori                         | Home Economics               | Science                     |
| Dance                                      | Indonesian                   | Sculpture (Practical Art)   |
| Design (Practical Art)                     | Japanese                     | Social Studies              |
| Design and Visual Communication (Graphics) | Korean                       | Spanish                     |
| Digital Technologies                       | Latin                        | Statistics                  |
| Drama                                      | Mathematics                  | Te Ao Haka                  |
| Earth and Space Science                    | Media Studies                | Technology                  |
|  | Music Studies                | Te Reo Maori                |
|  | NZ Sign Language             | Te Reo Rangatira            |
|  |                              | Tongan                      |

## University Admission Requirements:

In addition to achieving University Entrance, **most programmes have a more competitive entry** and you must also meet the admission requirements and be selected into your programme of study.

Some undergraduate programmes require you have taken specific subjects and gained minimum credits in certain subjects. Some programmes have other requirements such as a portfolio, audition and/or interview.

All undergraduate applicants at the University of Auckland and some other universities will be allocated a **rank score or a GES (guaranteed entry score)**.

### How your rank score is calculated.

A student's rank score will be allocated on their best 80 credits at Level 3 or higher over a maximum of **five approved subjects** and weighted by the level of achievement.

- The rank score will be calculated by awarding the following points for **up to 24 credits in each approved subject taken at Level 3**. The maximum rank score is 320.

|            |                                 |
|------------|---------------------------------|
| Excellence | 4 points eg $80 \times 4 = 320$ |
| Merit      | 3 points eg $80 \times 3 = 240$ |
| Achieved   | 2 points eg $80 \times 2 = 160$ |

- If students achieve fewer than 80 credits at Level 3 or higher their rank score will be based on those credits they have achieved
- Level 3 subject requirements for a specific programme may be met in Year 12
- NCEA Level 3 credits achieved in Year 12 may be counted towards the 80 best credits used for ranking purposes
- Students are strongly encouraged to take **approved subjects** (see list page 6) and achievement standards as best preparation for University study

### English language requirement for the University of Auckland:

University of Auckland introduced a new entrance requirement called the *Academic English Language Requirement\**. Students who do not meet this requirement will be offered places but will be required to do a specified English course at the University.

**\*For students applying on the basis of NCEA results the applicant must have gained a minimum of 17 credits in English at Level 2 or 3.**

## WHERE TO GO TO GET MORE INFORMATION

Visit the **Careers Department** to gather information and speak to Mrs Reid [reidj@rutherford.school.nz](mailto:reidj@rutherford.school.nz) or Mrs McGough 834 3305.

Visit the **Careers New Zealand** website [www.careers.govt.nz](http://www.careers.govt.nz). Advice on choosing subjects, subject matcher, skill matcher etc.

Visit **Vocational Pathways** website [www.youthguarantee.net.nz](http://www.youthguarantee.net.nz)

Visit the **MoneyHub** website: [www.moneyhub.co.nz/scholarships-nz.html](http://www.moneyhub.co.nz/scholarships-nz.html)

Visit relevant tertiary websites -see list below

University of Auckland [www.auckland.ac.nz](http://www.auckland.ac.nz)

Massey University [www.massey.ac.nz](http://www.massey.ac.nz)

Victoria University of Wellington - [www.victoria.ac.nz](http://www.victoria.ac.nz)

Otago University, Dunedin [www.otago.ac.nz](http://www.otago.ac.nz)

University of Canterbury, Christchurch - [www.canterbury.ac.nz](http://www.canterbury.ac.nz)

Manukau Institute of Technology - [www.manukau.ac.nz](http://www.manukau.ac.nz)

AUT University [www.aut.ac.nz](http://www.aut.ac.nz)

The University of Waikato - [www.waikato.ac.nz](http://www.waikato.ac.nz)

Unitec, Mt Albert - [www.unitec.ac.nz](http://www.unitec.ac.nz)

Lincoln University - [www.lincoln.ac.nz](http://www.lincoln.ac.nz)

Check out the **Rutherford College Careers** Facebook page - [www.facebook.com/rutherfordcollegecareers/](https://www.facebook.com/rutherfordcollegecareers/) to keep up to date with career information and opportunities, Open days, jobs etc.

# STUDENT PLANNING - WHAT IS MY PATHWAY?

START HERE

When I leave school I hope to:

Don't know. ☐

Get a job  
Immediately. ☐

Do a Diploma or  
Certificate at Polytechnic  
or some other training  
e.g.: apprenticeship ☐

Do a Degree at  
University or Polytechnic. ☐

So, I must keep my  
course as general as  
possible.

Doing:  
\_\_\_\_\_

The training will possibly be  
in:  
\_\_\_\_\_  
\_\_\_\_\_  
\_\_\_\_\_

The degree will possibly be  
in:  
\_\_\_\_\_  
\_\_\_\_\_  
\_\_\_\_\_

In Year 13, I will need:

- 1 \_\_\_\_\_
- 2 \_\_\_\_\_
- 3 \_\_\_\_\_
- 4 \_\_\_\_\_
- 5 \_\_\_\_\_

In Year 13, I will need:

- 1 \_\_\_\_\_
- 2 \_\_\_\_\_
- 3 \_\_\_\_\_
- 4 \_\_\_\_\_
- 5 \_\_\_\_\_

So, in Year 12, I need:

- 1 12 English
- 2 \_\_\_\_\_
- 3 \_\_\_\_\_
- 4 \_\_\_\_\_
- 5 \_\_\_\_\_
- 6 \_\_\_\_\_

So, in Year 12, I need:

- 1 12 English
- 2 \_\_\_\_\_
- 3 \_\_\_\_\_
- 4 \_\_\_\_\_
- 5 \_\_\_\_\_
- 6 \_\_\_\_\_

So, in Year 11, I need:

- 1 11 English
- 2 11 Mathematics
- 3 \_\_\_\_\_
- 4 \_\_\_\_\_
- 5 \_\_\_\_\_
- 6 \_\_\_\_\_

So, in Year 11, I need:

- 1 11 English
- 2 11 Mathematics
- 3 \_\_\_\_\_
- 4 \_\_\_\_\_
- 5 \_\_\_\_\_
- 6 \_\_\_\_\_

**Check the tertiary  
websites for  
course requirements  
and recommended  
subjects**



# SELECTING AND CHECKING MY SUBJECTS

| <h2>Year 11</h2>  |                      |                          |          |          |          |          |
|---|----------------------|--------------------------|----------|----------|----------|----------|
|   | Compulsory           | Compulsory               |          |          |          |          |
| <b>My<br/>Year 11<br/>Choices</b>   | <b>1<br/>English</b> | <b>2<br/>Mathematics</b> | <b>3</b> | <b>4</b> | <b>5</b> | <b>6</b> |
| <ol style="list-style-type: none"> <li>1. All students study <b>six</b> subjects. Stay as broad as possible.</li> <li>2. All students study <b>English, Mathematics</b>.</li> <li>3. Students are strongly encouraged to choose a <b>Science</b>.</li> <li>4. Students are encouraged to take a <b>maximum of two subjects</b> from any one Learning Area. This restriction is to ensure students keep their options open for a variety of possible pathways in Year 12.</li> <li>5. If you wish to study a Language in Year 11, you must have taken it in Year 10 unless you can prove prior learning to the HOF Languages.</li> </ol> <p><b>Questions I have?</b></p> |                      |                          |          |          |          |          |

# Year 12

|                          | Compulsory   |                                       |                                       |                                       |                                       |                                       |
|--------------------------|--------------|---------------------------------------|---------------------------------------|---------------------------------------|---------------------------------------|---------------------------------------|
| My<br>Year 12<br>Choices | 1<br>English | 2                                     | 3                                     | 4                                     | 5                                     | 6                                     |
|                          |              | <i>Will I meet the prerequisites?</i> | <i>Will I meet the prerequisites?</i> | <i>Will I meet the prerequisites?</i> | <i>Will I meet the prerequisites?</i> | <i>Will I meet the prerequisites?</i> |
|                          |              | YES/NO                                | YES/NO                                | YES/NO                                | YES/NO                                | YES/NO                                |

1. All students study **six** subjects.
2. All students study **English**. It is compulsory.
3. **Mathematics** is highly recommended.
4. There is a wide range of subjects available at Year 12 and students should carefully consider which subjects lead on to Year 13 subjects.
5. Year 12 students may undertake a multilevel course with subjects at Year 11, Year 12 or Year 13 based on ability and meeting prerequisites.
6. Year 12 students may choose to apply for one of the Vocational Academies – refer to pages 74 - 76.

**Questions I have?**

# Year 13

| My Year 13 Choices | 1  | 2  | 3  | 4  | 5  | 6  |
|--------------------|--|--|--|--|--|--|
|                    | Will I meet the prerequisites?<br>YES/NO | Will I meet the prerequisites?<br>YES/NO | Will I meet the prerequisites?<br>YES/NO | Will I meet the prerequisites?<br>YES/NO | Will I meet the prerequisites?<br>YES/NO | Will I meet the prerequisites?<br>YES/NO |

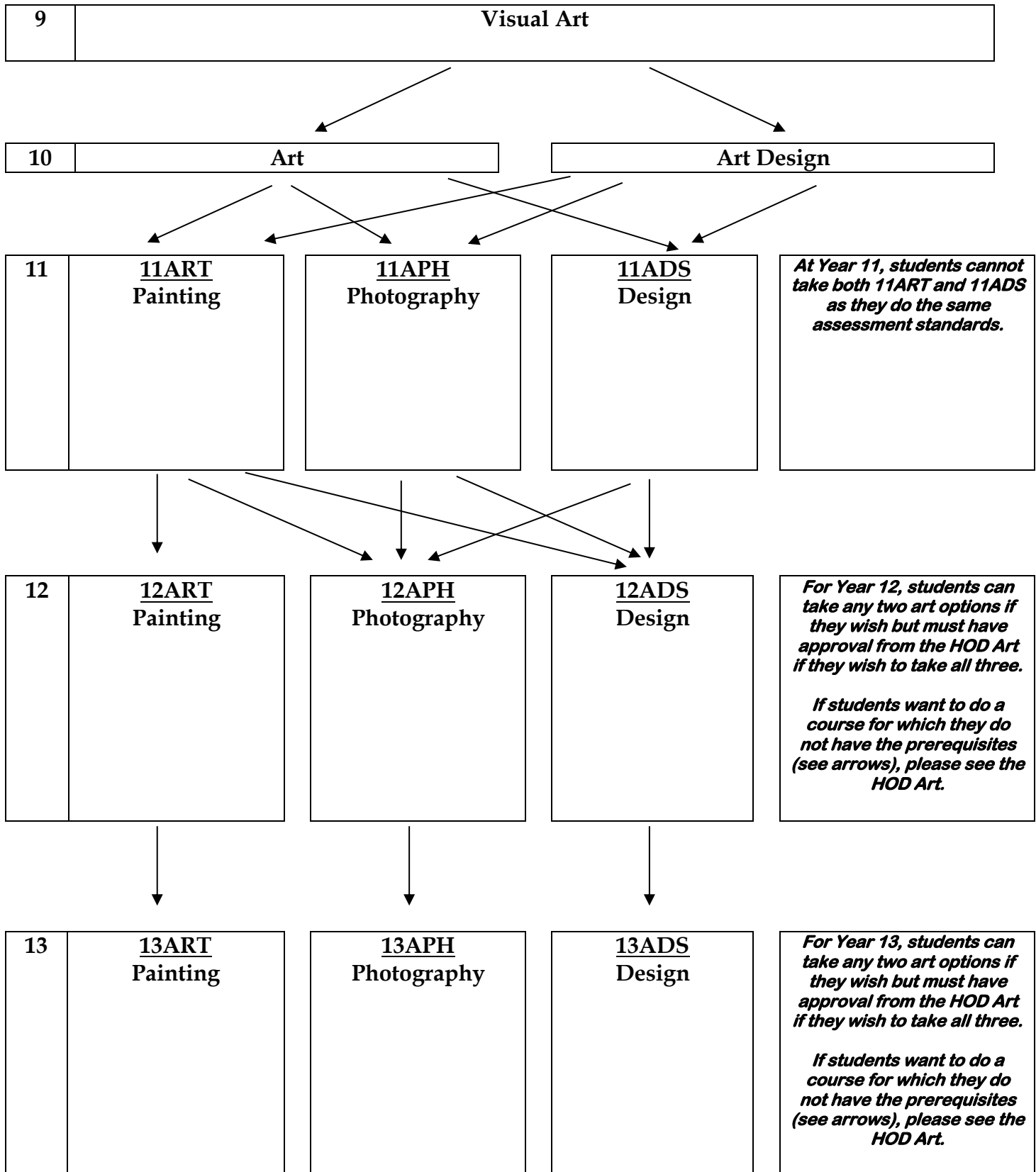
1. All Year 13 students will study **five** subjects and have a study option.
2. If you want to do 6 subjects you must get the Year 13 Dean's permission.
3. Most Year 13 subjects have **prerequisites** which must be met before the subject can be taken. There are no compulsory subjects. You must meet the prerequisites or seek HOF approval.
4. Year 13 students may undertake a multilevel course with subjects at Year 11, Year 12 or Year 13 based on ability and meeting prerequisites. Some students may be offered places in the Young Scholar's programme at Auckland University.
5. Year 13 students may choose to apply for one of the Vocational Academies – refer to pages 74 - 76.

**Questions I have?**

| <b>COURSE PROGRESSIONS</b>                     |   |  |
|--|---|--|
| <b>Subject</b>                                 | <b>Year 9</b>   | <b>Year 10</b>   |
| <b>ARTS – Visual</b>                           | Visual Arts   | Art<br>Art Design  |
|  | Dance<br>Drama<br>Music   | Dance<br>Drama<br>Music  |
| <b>ARTS – Performing</b>                       |   |  |
| <b>ENGLISH</b>                                 | English   | English  |
| <b>ESOL</b>                                    | ELL   | ELL  |
| <b>LANGUAGES</b>                               | Chinese<br>German<br>Japanese   | Chinese<br>German<br>Japanese  |
| <b>TE AO MAORI</b>                             | Te Reo Maori<br>Te Ao Maori   | Te Reo Maori<br>Te Ao Maori  |
| <b>MATHEMATICS</b>                             | Mathematics   | Mathematics  |
| <b>HEALTH EDUCATION<br/>PHYSICAL EDUCATION</b> | Health<br>Physical Education  | Health<br>Physical Education<br>Sports Science   |
| <b>SCIENCE</b>                                 | Science   | Science  |
| <b>SOCIAL SCIENCES</b>                         | Social Studies  | Business Studies<br>Financial Literacy<br>Philosophy<br>Social Studies   |
| <b>TECHNOLOGY</b>                              | Computer Science<br>Digital Technology<br><br>Fashion Design<br>Food Technology<br><br>Hard Materials | Computer Programming<br>Digital Technology<br>Electronics<br>Fashion Design<br>Food Technology<br><br>Graphics<br>Hard Materials |
| <b>CAREERS/TRANSITION</b>                      |   |  |

| COURSE PROGRESSIONS   |   |  |
|---|---|--|
| Year 11   | Year 12   | Year 13 * UE Approved  |
| Art<br>Design<br>Photography  | Art<br>Design<br>Photography  | <b>Art *</b><br><b>Design *</b><br><b>Photography *</b>  |
| Dance<br>Drama<br>Music   | Dance<br>Drama<br>Music   | <b>Dance *</b><br><b>Drama *</b><br><b>Music *</b>   |
| English<br><br>Media Studies  | English<br><br>Media Studies  | <b>English *</b><br><br><b>Media Studies *</b>   |
| EL3   | EL4   | ELL / EAP  |
| Chinese<br>German<br>Japanese   | Chinese<br>German<br>Japanese   | <b>Chinese *</b><br><b>German *</b><br><b>Japanese *</b>   |
| Te Reo Maori<br>Te Ao Haka<br>Mahi-ā-Toi  | Te Reo Maori<br>Te Ao Haka<br>Mahi-ā-Toi  | <b>Te Reo Maori *</b><br><b>Te Ao Haka *</b><br>Mahi-ā-Toi   |
| Mathematics<br>Mathematics Internal<br>Mathematics Combined   | Mathematics<br>Mathematics Internal<br>Mathematics Combined   | <b>Mathematics – Calculus *</b><br><b>Mathematics – Statistics *</b>   |
| Physical Education<br>Physical Activity & Leisure Studies<br>Health   | Physical Education<br>Physical Activity & Leisure Studies<br>Health<br>Outdoor Education  | <b>Physical Education *</b><br>Physical Activity & Leisure Studies<br><b>Health *</b><br>Outdoor Education<br>Police and Uniformed Services  |
| Science<br>Physical Science<br><br>Science Applied  | Biology<br>Chemistry<br>Physics<br>General Science  | <b>Biology *</b><br><b>Chemistry *</b><br><b>Physics *</b><br><b>General Science *</b>   |
| Accounting<br>Economics<br>Geography<br>History   | Accounting<br>Economics<br>Geography<br>History<br>Travel and Tourism<br>Classical Studies  | <b>Accounting *</b><br><b>Economics *</b><br><b>Geography *</b><br><b>History *</b><br>Travel and Tourism<br><b>Classical Studies *</b>  |
| Computer Programming<br><br>Electronics<br>Fashion Design<br>Food Technology<br>Hospitality<br>Graphics<br>Building<br>Engineering<br>Technology Product Design | Computer Programming<br><br>Electronics<br>Fashion Design<br>Food Technology<br>Hospitality<br>Graphics<br>Building<br>Engineering<br>Technology Product Design<br>Mechatronics | <b>Computer Programming *</b><br><br><b>Technology Product Design *</b><br><b>Technology Fashion Design *</b><br><b>Food Technology *</b><br>Hospitality<br><b>Graphics *</b><br>Building<br>Engineering<br><b>Technology Product Design *</b><br>Mechatronics |
| Skill Pathways  | Skill Pathways<br>Early Childhood<br>Gateway  | Skill Pathways<br>Early Childhood<br>Gateway   |

# VISUAL ART COURSE PATHWAYS



# VISUAL ART: PAINTING

Mrs J Reid – Room 84

| <b>Year 11<br/>Painting [11ART]</b>  | <b>Year 12<br/>Painting [12ART]</b>   | <b>Year 13<br/>Painting [13ART]</b>  |
|--|---|--|
| <b>Prerequisites:</b><br><br>Strongly recommend doing 10ART  | <b>Prerequisites:</b><br><br>8 credits from 11ART or HOD approval   | <b>Prerequisites:</b><br><br>8 credits from 12ART or HOD approval  |
| <b>Course Information:</b><br><br>This course involves elements of painting and printmaking that use the skills of research, generating, developing and resolving individual ideas based on established practice. These are presented in both workbook and folio formats at curriculum level 6.<br><br>Most materials are supplied but others are required as personal stationery items including paint and basic paintbrushes.<br><br>Internal Assessments:<br>AS90914 Drawing methods and skills<br>AS90915 Developing Ideas<br><br>External Assessments:<br>AS90916 Folio of work<br><br>Own materials and stationery costs for the year: approximately \$35<br><br><b>Field Trip Costs: To be advised</b><br><br><b>Endorseable: Yes</b><br><br><b>Internal Credits: 10</b><br><br><b>External Credits: 12</b><br><br><b>Level of Credits: 1</b><br><br><b>Leads to: 12ART</b> | <b>Course Information:</b><br><br>This course involves selecting a subject area of individual interest and applying research, drawing and painting tasks to it. Work is presented in both workbook and folio formats at curriculum level 7.<br><br>Most materials are supplied but others are required as personal stationery items including paint and basic paintbrushes.<br><br>Internal Assessments:<br>AS91311 Applying knowledge<br>AS91316 Developing Ideas<br><br>External Assessments:<br>AS91321 Folio of work<br><br>Own materials and stationery costs for the year: approximately \$35<br><br><b>Field Trip Costs: To be advised</b><br><br><b>Endorseable: Yes</b><br><br><b>Internal Credits: 8</b><br><br><b>External Credits: 12</b><br><br><b>Level of Credits: 2</b><br><br><b>Leads to: 13ART</b> | <b>Course Information:</b><br><br>This course involves selecting a subject area of individual interest and applying research, drawing and painting tasks to it. Work is presented in both workbook and folio formats at curriculum level 8.<br><br>Most materials are supplied but others are required as personal stationery items including paint and basic paintbrushes.<br><br>Internal Assessments:<br>AS91446 Demonstrate understanding<br>AS91451 Clarify Ideas<br><br>External Assessments:<br>AS91456 Folio of work<br><br>Own materials and stationery costs for the year: approximately \$40<br><br><b>Field Trip Costs: To be advised</b><br><br><b>Endorseable: Yes</b><br><br><b>Internal Credits: 8</b><br><br><b>External Credits: 14</b><br><br><b>Level of Credits: 3</b><br><br><b>University Entrance Approved</b><br><b>Examinable by Scholarship</b> |

# VISUAL ART: DESIGN

Mrs J Reid - Room 84

| <b>Year 11</b><br><b>Art Design [11ADS]</b>   | <b>Year 12</b><br><b>Art Design [12ADS]</b>   | <b>Year 13</b><br><b>Art Design [13ADS]</b>  |
|---|---|--|
| <b>Prerequisites:</b><br><br>Strongly recommend doing 10ADS or 10ART or both.<br>Own laptop is advantageous.  | <b>Prerequisites:</b><br><br>8 credits from a Level 1 Art course.<br>Recommend doing 11ADS.<br>Own laptop is advantageous.  | <b>Prerequisites:</b><br><br>8 credits from 12ADS or HOD approval.<br>Own laptop is advantageous.  |
| <b>Course Information:</b><br><br>This course involves solving design problems in two and/or three dimensions. There are class-wide and individual projects, using both traditional drawing and printmaking and digital media, to draw analyse, generate, develop and regenerate ideas to produce solutions based on contemporary practice. Work is presented in both workbook and folio format at curriculum level 6.<br><br>Students will need regular access to the Adobe Suite, including from home.<br><br>Most materials are supplied but others are required as personal stationery.<br><br>Internal Assessments:<br>AS90914 Drawing methods and skills<br>AS90917 Resolved work using cultural conventions<br><br>External Assessments:<br>AS90916 Folio of work<br><br><b>Printing and stationery costs for the year approximately \$30</b><br><b>Adobe Creative Suite License = \$10.00</b><br><br><b>Field Trip Costs: To be advised</b><br><br><b>Endorseable: Yes</b><br><br><b>Internal Credits: 8</b><br><br><b>External Credits: 12</b><br><br><b>Level of Credits: 1</b><br><br><b>Leads to: 12ADS</b> | <b>Course Information:</b><br><br>This course involves using design processes and procedures in both traditional and digital media. Work is presented in a visual diary, digital or conventional workbook and folio format at curriculum level 7.<br><br>Students will need regular access to the Adobe Suite, including from home.<br><br>Most materials are supplied but others are required as personal stationery.<br><br>Internal Assessments:<br>AS91310 Apply knowledge<br>AS91315 Developing Ideas<br><br>External Assessments:<br>AS91320 Folio of work<br><br><b>Printing and stationery costs for the year approximately \$40</b><br><b>Adobe Creative Suite License = \$10.00</b><br><br><b>Field Trip Costs: To be advised</b><br><br><b>Endorseable: Yes</b><br><br><b>Internal Credits: 8</b><br><br><b>External Credits: 12</b><br><br><b>Level of Credits: 2</b><br><br><b>Leads to: 13ADS</b> | <b>Course Information:</b><br><br>This course involves using design processes and procedures in both traditional and digital media. Work is presented in a visual diary, digital or conventional workbook and folio format at curriculum level 8.<br><br>Students will need regular access to the Adobe Suite, including from home.<br><br>Most materials are supplied but others are required as personal stationery.<br><br>Internal Assessments:<br>AS91445 Demonstrate understanding-optional<br>AS91450 Clarify Ideas<br><br>External Assessments:<br>AS91455 Folio of work<br><br><b>Printing and stationery costs for the year approximately \$50</b><br><b>Adobe Creative Suite License = \$10.00</b><br><br><b>Field Trip Costs: To be advised</b><br><br><b>Endorseable: Yes</b><br><br><b>Internal Credits: 8</b><br><br><b>External Credits: 14</b><br><br><b>Level of Credits: 3</b><br><br><b>Leads to:</b><br><b>University Entrance Approved</b><br><b>Examinable by Scholarship</b> |

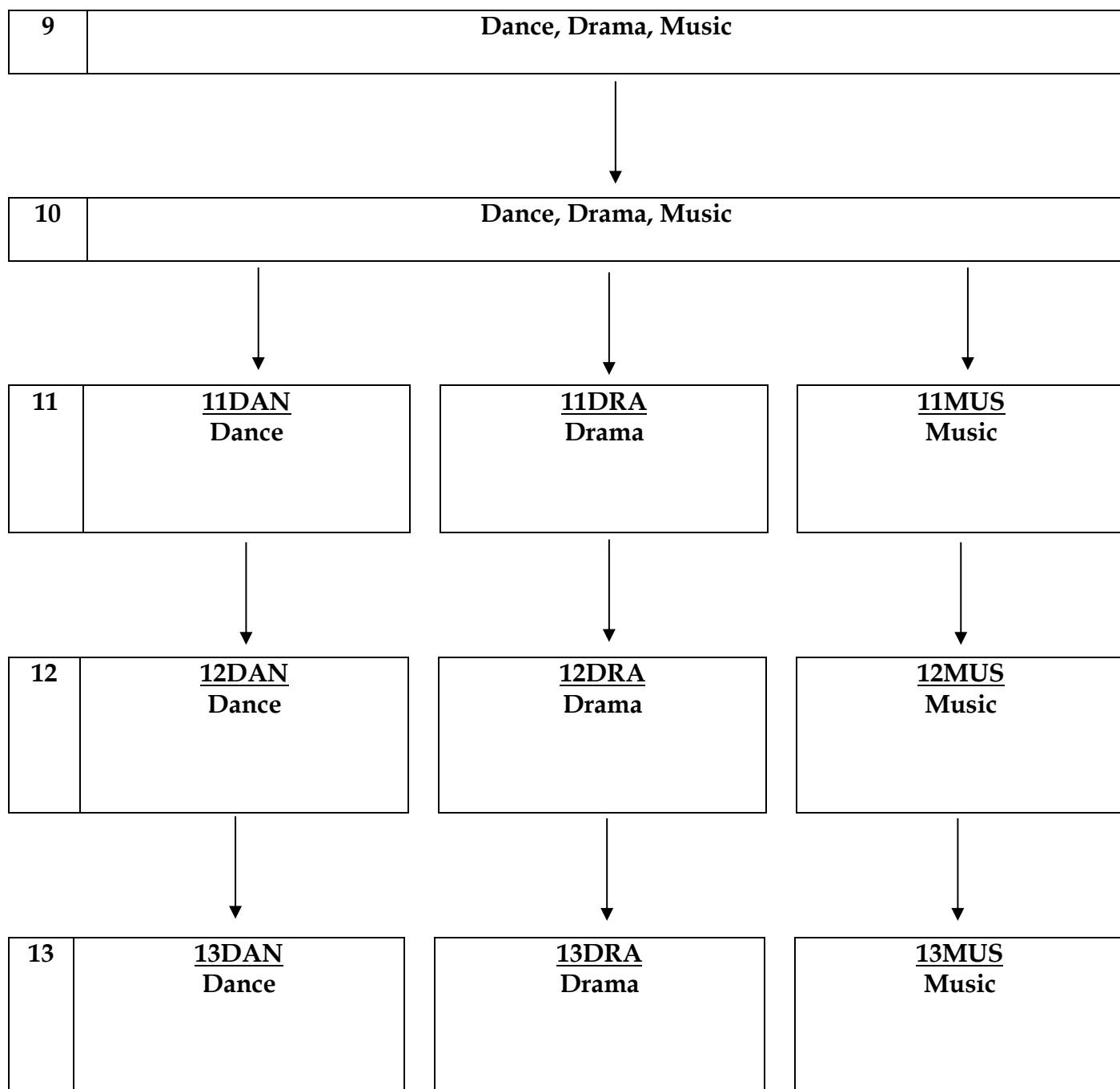


# VISUAL ART: PHOTOGRAPHY

Mrs J Reid – Room 84

| <b>Year 11</b><br><b>Photography [11APH]</b>   | <b>Year 12</b><br><b>Photography [12APH]</b>  | <b>Year 13</b><br><b>Photography [13APH]</b>   |
|--|---|--|
| <b>Pre requisites:</b><br>Recommend doing 10ADS which includes a photography project.<br>Own digital camera is advantageous.<br>Own laptop is advantageous.  | <b>Pre requisites:</b><br>8 credits from a L1 Art course.<br>Recommend doing 11APH.<br>Own digital camera is advantageous.<br>Own laptop is advantageous.   | <b>Pre requisites:</b><br>12 credits from 12APH or HOD approval.<br>Own digital camera is advantageous.<br>Own laptop is advantageous.   |
| <b>Course Information:</b><br><br>This course involves the technical and picture-making aspects of both traditional and digital photography by drawing, analysing, generating, developing and regenerating ideas to produce solutions based on contemporary practice. Work is presented using workbook format at curriculum Level 6.<br><br>Students will need regular access to the Adobe Suite, including from home.<br><br>Some materials are supplied but others are required as personal stationery. Please see the stationery list.<br><br><b>Printing and stationery costs for the year approximately \$40</b><br><b>Adobe Creative Suite License = \$10.00</b><br><b>School cameras can be loaned to students</b><br><br>Internal Assessments:<br>AS90917 Cultural Conventions<br>AS91307 Demonstrate an understanding of methods and ideas<br>AS91312 Apply knowledge<br>AS91317 Develop Ideas<br><br><b>Field Trip Costs: To be advised</b><br><br><b>Endorseable: No</b><br><br><b>Internal Credits: 16</b><br><br><b>External Credits: 0</b><br><br><b>Level of Credits: 1 and 2</b><br><br><b>Leads to: 12APH</b> | <b>Course Information:</b><br><br>This course involves digital photography. Learning is about researching ideas, developing ideas, regenerating and resolving ideas based on contemporary practice. Work is presented in a visual diary and folio formats at curriculum Level 7.<br><br>Students will need regular access to the Adobe Suite, including from home.<br><br>Some materials are supplied but others are required as personal stationery. Please see the stationery list.<br><br><b>Printing and stationery costs for the year approximately \$40</b><br><b>Adobe Creative Suite License = \$10.00</b><br><b>Own digital camera is recommended.</b><br><b>School camera can be loaned to students</b><br><br>Internal Assessments:<br>AS91312 Apply Knowledge<br>AS91317 Develop Ideas<br>OR<br>AS91307 Demonstrate an understanding<br>AS91325 Produce a resolved work<br><br>External Assessments:<br>AS91322 Folio of work<br><br><b>Field Trip Costs: To be advised</b><br><br><b>Endorseable: Yes</b><br><br><b>Internal Credits: 8</b><br><br><b>External Credits: 12</b><br><br><b>Level of Credits: 2</b><br><br><b>Leads to: 13APH</b> | <b>Course Information:</b><br><br>This course involves digital photography. Learning is about researching ideas, developing ideas, regenerating and resolving ideas based on contemporary practice. Work is presented in a visual diary and folio at curriculum Level 8.<br><br>Students will need regular access to the Adobe Suite, including from home.<br><br>Some materials are supplied but others are required as personal stationery. Please see the stationery list.<br><br><b>Printing and stationery costs for the year approximately \$40-\$50</b><br><b>Adobe Creative Suite License = \$10.00</b><br><b>Own digital camera is recommended.</b><br><b>School cameras can be loaned to students</b><br><br>Internal Assessments:<br>AS91447 Demonstrate understanding - optional<br>AS91452 Clarify Ideas<br><br>External Assessments:<br>AS91457 Folio of work<br><br><b>Field Trip Costs: To be advised</b><br><br><b>Endorseable: Yes</b><br><br><b>Internal Credits: 8</b><br><br><b>External Credits: 14</b><br><br><b>Level of Credits: 3</b><br><br><b>University Entrance Approved</b><br><b>Examinable by Scholarship</b> |

# PERFORMING ARTS COURSE PATHWAYS



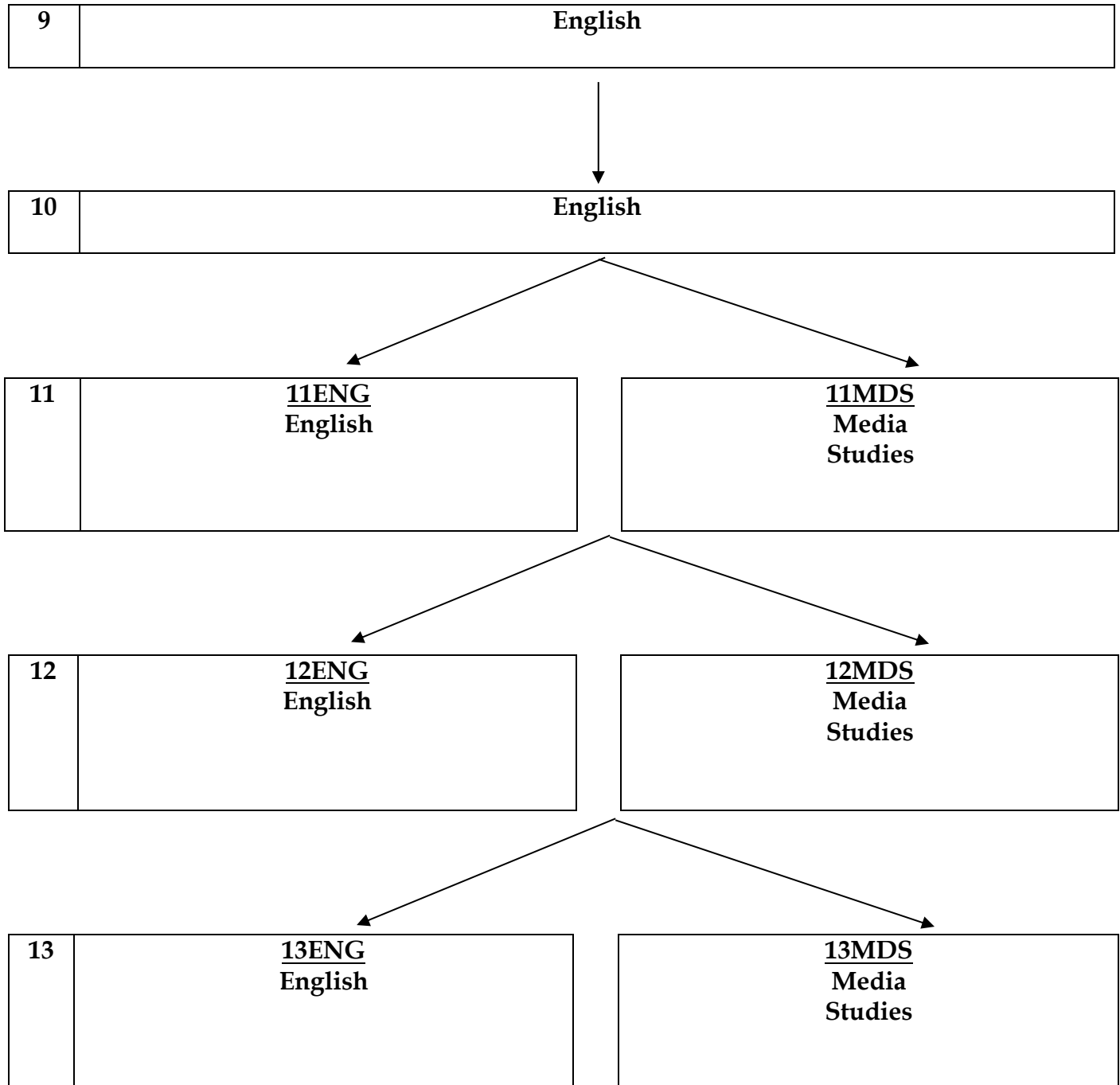
**Mrs P Fahitua - Room 8**

19

| <h1 style="text-align: center;">DRAMA</h1> <h2 style="text-align: center;">Miss Wilson – Room 85</h2>   |   |  |
|---|---|--|
| Year 11<br>Drama [11DRA]  | Year 12<br>Drama [12DRA]  | Year 13<br>Drama [13DRA]   |
| <b>Prerequisites:</b><br><br>A satisfactory Year 10 Drama course or HOF approval  | <b>Prerequisites:</b><br><br>12+ credits in Year 11 Drama or HOF approval (including at least 4 external credits)   | <b>Prerequisites:</b><br><br>12+ credits in Year 12 Drama or HOF approval (including at least 4 external credits)  |
| <b>Course Information:</b><br><br>Drama provides an opportunity for the individual to develop important life skills (for example self-confidence, critical thinking, self-evaluation, creativity, teamwork and self-discipline) and this course allows students to study Drama through practical experience. It will suit anyone who has a strong interest in drama and theatre. The course includes the following areas of study: drama techniques (voice, movement and body awareness), devising drama, reviewing performances and demonstrating knowledge of drama and theatre forms. The course offers two external standards which focuses on a theatre form and live theatre.<br><br><b>Internal Assessments:</b><br>AS90006 Drama Techniques<br>AS90997 Devising Drama<br>AS90999 Use Theatre Forms<br>AS90009 Perform a Role<br><br><b>External Assessments:</b><br>AS90998 History and features of Theatre form<br>AS90011 Demonstrate understanding of live theatre<br><br><b>Field Trip Costs:</b><br><br><b>Endorseable: Yes</b><br><br><b>Internal Credits: 18</b><br><br><b>External Credits: 8</b><br><br><b>Level of Credits: 1</b><br><br><b>Leads to: Level 2 Drama</b> | <b>Course Information:</b><br><br>This course will continue to develop individuals' life skills and allow them to study a broader range of Drama through practical experience. It will suit anyone who has a strong interest in drama and theatre.<br><br>This course builds on knowledge gained in Year 11 and covers the following areas of study: drama techniques (voice, movement and body awareness), scripted and devised drama, developing knowledge of drama forms and participating in acting roles in production work. The course offers one external standard which focuses on live performances seen throughout the year. Students will be required to attend <b>at least two</b> live performances during the year.<br><br><b>Internal Assessments:</b><br>AS91213 Drama Techniques * R<br>AS91214 Devising Drama<br>AS91218 Perform a Role * R<br><br><b>External Assessments:</b><br>AS91219 Analyse live performance*W<br><br><b>Field Trip Costs:</b><br><br><b>Endorseable: Yes</b><br><br><b>Internal Credits: 14</b><br><br><b>External Credits: 4</b><br><br><b>Level of Credits: 2</b><br><br><b>Leads to: Level 3 Drama</b> | <b>Course Information:</b><br><br>This course builds on all of the skills and knowledge learnt in Years 11 and 12 and is suited to anyone who has a strong interest in performing arts.<br><br>This course covers a variety of drama knowledge and skills. Students are now expected to understand and perform a variety of drama forms in greater depth. The course offers one external standard which focuses on live performances seen throughout the year. Students will be required to attend <b>at least two</b> live performances during the year.<br><br><b>Internal Assessments:</b><br>AS91512 Drama Techniques * R<br>AS91513 Devising Drama<br>AS91517 Perform a Role * R<br><br><b>External Assessments:</b><br>AS91518 Analyse live performance*W<br><br><b>Field Trip Costs:</b><br><br><b>Endorseable: Yes</b><br><br><b>Internal Credits: 14</b><br><br><b>External Credits: 4</b><br><br><b>Level of Credits: 3</b><br><br><b>University Entrance Approved</b><br><b>Examinable by Scholarship</b> |

| <h1 style="text-align: center;">MUSIC</h1> <h2 style="text-align: center;">Mrs Taula – Room 9</h2>  |   |   |
|---|---|---|
| <b>Year 11</b><br><b>Music [11MUS]</b>  | <b>Year 12</b><br><b>Music [12MUS]</b>  | <b>Year 13</b><br><b>Music [13MUS]</b>  |
| <b>Prerequisites:</b><br><br>At least three year's practical experience on student's chosen musical instrument, standard equivalent to Grade 4 Theory, and some composition experience or by HOF approval via audition and diagnostic testing.  | <b>Prerequisites:</b><br><br>At least 16 credits gained in NCEA Level 1 Music. At least three year's practical experience on student's chosen musical instrument and standard equivalent to Grade 5 Theory or by HOF approval via audition and diagnostic testing.  | <b>Prerequisites:</b><br><br>At least 16 credits gained in NCEA Level 2 Music. At least four year's practical experience on student's chosen musical instrument and standard equivalent to Grade 6 Theory or by HOF approval via audition and diagnostic testing.   |
| <b>Course Information:</b><br><br>This course develops music skills which include the study of music works, materials of music, performance, composition, aural and theory.<br><br>It is mandatory for students to join music groups and attend music trips.<br><br>All students will be enrolled into the Music Itinerant Scheme where they must attend a 30 minute lesson once a week with a music specialist.<br><br><br><b>Internal Assessments:</b><br>AS91090 Solo Performance<br>AS91091 Group Performance<br>AS91092 Composition<br><br><br><b>External Assessments:</b><br>AS91094 Score Reading<br><br><br><b>Field Trip Costs:</b> Trip by trip basis<br><br><b>Endorseable:</b> Yes<br><br><b>Internal Credits:</b> 16<br><br><b>External Credits:</b> 4<br><br><b>Level of Credits:</b> 1<br><br><b>Leads to:</b> 12 Music | <b>Course Information:</b><br><br>This course is in greater depth than Level 1. Additional skills include instrumentation, transcription of scores, score reading, harmonic writing and second solo instrument.<br><br>Students are expected to practise their performance instrument for at least 60 minutes a day.<br><br>It is mandatory for students to join music groups and attend music trips.<br><br>All students will be enrolled into the Music Itinerant Scheme where they must attend a 30 minute lesson once a week with a music specialist.<br><br><br><b>Internal Assessments:</b><br>AS91270 Solo Performance<br>AS91271 Composition<br>AS91272 Group Performance<br>AS91278 Investigation of NZ Music<br><br><br><b>External Assessments:</b><br>AS91276 Score reading<br><br><br><b>Field Trip Costs:</b> Trip by trip basis<br><br><b>Endorseable:</b> Yes<br><br><b>Internal Credits:</b> 20<br><br><b>External Credits:</b> 4<br><br><b>Level of Credits:</b> 2<br><br><b>Leads to:</b> 13 Music | <b>Course Information:</b><br><br>This course is in greater depth than Level 2. Additional skills include compositional portfolios and second solo instrument. Emphasis is placed on a student centred programme which highlights the student's strengths and talents in preparation for tertiary study.<br><br>It is mandatory for students to join music groups and attend music trips.<br><br>All students will be enrolled into the Music Itinerant Scheme where they must attend a 30 minute lesson once a week with a music specialist.<br><br><br><b>Internal Assessments:</b><br>AS91416 Solo Performance<br>AS91418 Group performance<br>AS91425 Research a Music topic * R<br><br><br><b>External Assessments:</b><br>AS91423 Context<br><br><br><b>Field Trip Costs:</b> Trip by trip basis<br><br><b>Endorseable:</b> Yes<br><br><b>Internal Credits:</b> 18<br><br><b>External Credits:</b> 4<br><br><b>Level of Credits:</b> 3<br><br><b>University Entrance Approved</b><br><b>Examinable by Scholarship</b> |

# ENGLISH COURSE PATHWAYS



| <h1>ENGLISH</h1> <h2>Mr Ferguson - Room B1</h2>  |   |  |
|--|---|--|
| <b>Year 11</b><br><b>English [11ENG]</b>   | <b>Year 12</b><br><b>English [12ENG]</b>  | <b>Year 13</b><br><b>English [13ENG]</b>   |
| The Level One English course covers the Making Meaning and Creating Meaning strands of the New Zealand Curriculum. Level One English Achievement Standards count for Literacy and offer pathways to subject and course endorsement.  | The Level Two English course covers the Making Meaning and Creating Meaning strands of the New Zealand Curriculum. It offers pathways to subject and course endorsement and Level Three English.  | Year 13 English covers the Making Meaning and Creating Meaning strands of the New Zealand Curriculum. It offers pathways to subject and course endorsement, in addition to University Entrance and Scholarship.  |
| <b>Prerequisites:</b><br><br>None.   | <b>Prerequisites:</b><br><br>None.  | <b>Prerequisites:</b><br><br>Well-developed reading, writing and presenting skills.  |
| <b>Course Information:</b><br><br>This endorseable course comprises English Achievement Standards and provides pathways to Level Two English. Please note that all English credits count towards Level One Literacy.<br><br>Internal Assessments:<br>AS90856 Close viewing<br>AS90053 Formal writing<br>AS90052 Creative writing<br>AS90855 Visual text<br>AND/OR<br>AS90857 Oral text<br><br>External Assessments [any two of]:<br>AS90849 Written text essay<br>AS90850 Film essay<br>AS90851 Close reading<br><br><b>Endorseable: Yes</b><br><br><b>Internal Credits: 12</b><br><br><b>External Credits: 8</b><br><br><b>Level of Credits: 1</b><br><br><b>Leads to:</b><br><b>12 English</b> | <b>Course Information:</b><br><br>The Year 12 English programme builds on the Year 11 course. This course provides pathways to Level Three English.<br><br>Internal Assessments:<br>AS91101 Writing portfolio * W<br>AS91102 Oral text<br>OR<br>AS91103 Visual text<br>AS91105 Information literacy * R<br><br>External Assessments:<br>AS91098 Essay * R / W<br>AS91099 Essay * W<br><br><b>Endorseable: Yes</b><br><br><b>Internal Credits: 13</b><br><br><b>External Credits: 8</b><br><br><b>Level of Credits: 2</b><br><br><b>Leads to:</b><br><b>13 English</b> | <b>Course Information:</b><br><br>This academic English programme caters for students who have a sound level of achievement in Year 12.<br><br>Internal Assessments:<br>AS91475 Writing portfolio * W<br>AS91476 Seminar (optional)<br>AS91479 Critical texts research – report * R<br>AS91480 Close viewing<br><br>External Assessments:<br>AS91472 Essay * R / W<br>AS91473 Essay * W<br><br><b>Endorseable: Yes</b><br><br><b>Internal Credits: 13</b><br><br><b>External Credits: 8</b><br><br><b>Level of Credits: 3</b><br><br><b>Leads to:</b><br><b>University Entrance Approved</b><br><b>Examinable by Scholarship</b> |

# MEDIA STUDIES

Mrs Betanzo – B Block

| Year 11<br>Media Studies [11MDS]  | Year 12<br>Media Studies [12MDS]   | Year 13<br>Media Studies [13MDS]   |
|---|--|--|
| <b>Prerequisites:</b><br><br>Operating at curriculum Level 5 in English with some Merits in 10 English; approval of TIC.  | <b>Prerequisites:</b><br><br>Year 11 Media Studies with at least 12 credits or 12 Credits in Year 11 English or approval of TIC.   | <b>Prerequisites:</b><br><br>Year 12 Media Studies with at least 12 credits gained or Year 12 English with approval of TIC.  |
| <b>Course Information:</b><br><br>This humanities course is designed to teach an understanding of the workings of the mass media. Students will gain knowledge, skills, and experience to explore media concepts, explore language in media texts and use media conventions and technology to create media.<br><br>Students will explore the way individuals use media and the conventions of a media genre (eg sitcoms or superhero). Students also have hands-on experience designing and creating a short documentary.<br><br><b>Internal Assessments:</b><br>AS90989 Individuals interact with the media<br>AS90990 Close reading of media text<br>AS90993 Design and plan<br>AS90994 Media product<br><br><b>External Assessments:</b><br>AS90992 Characteristics of a media genre<br><br><b>Endorseable: Yes</b><br><br><b>Internal Credits: 15</b><br><br><b>External Credits: 4</b><br><br><b>Level of Credits: 1</b><br><br><b>Leads to:</b><br>12 Media Studies | <b>Course Information:</b><br><br>This is an academic course with hands on experience in journalism. The focus is on the interaction between media and audience and between traditional and new media.<br><br>The practical component involves the production of a podcast, and the theory component involves film genre (horror, musical or teen) and investigation of media representation of a group or culture.<br><br><b>Internal Assessments:</b><br>AS91250 Representation in the media<br>AS91252 Design and plan<br>AS91253 Media product<br>AS91255 Write for the media * W<br><br><b>External Assessments:</b><br>AS91251 Media Genre * R/W<br><br><b>Endorseable: Yes</b><br><br><b>Internal Credits: 16</b><br><br><b>External Credits: 4</b><br><br><b>Level of Credits: 2</b><br><br><b>Leads to:</b><br>13 Media Studies | <b>Course Information:</b><br><br>This course continues to investigate the relationship between media and society, using modern media such as film, television, social media and internet.<br><br>Students will analyse the influences of the media on aspects of our lives as well as produce their own magazine spread. It is an ideal pathway for those intending to pursue a career in media or a degree in humanities or communications. It is also part of the Creative Industries vocational pathway.<br><br>Scholarship tutorials are available.<br><br><b>Internal Assessments:</b><br>AS91494 Design and plan<br>AS91495 Media product<br>AS91496 Significant development<br>AS91497 Write for the media * W<br><br><b>External Assessments:</b><br>AS91493 Genre and society * R/W<br><br><b>Endorseable: Yes</b><br><br><b>Internal Credits: 16</b><br><br><b>External Credits: 4</b><br><br><b>Level of Credits: 3</b><br><br><b>University Entrance Approved</b><br><b>Examinable by Scholarship</b> |



# ENGLISH LANGUAGE

Ms Gerzic - International Village

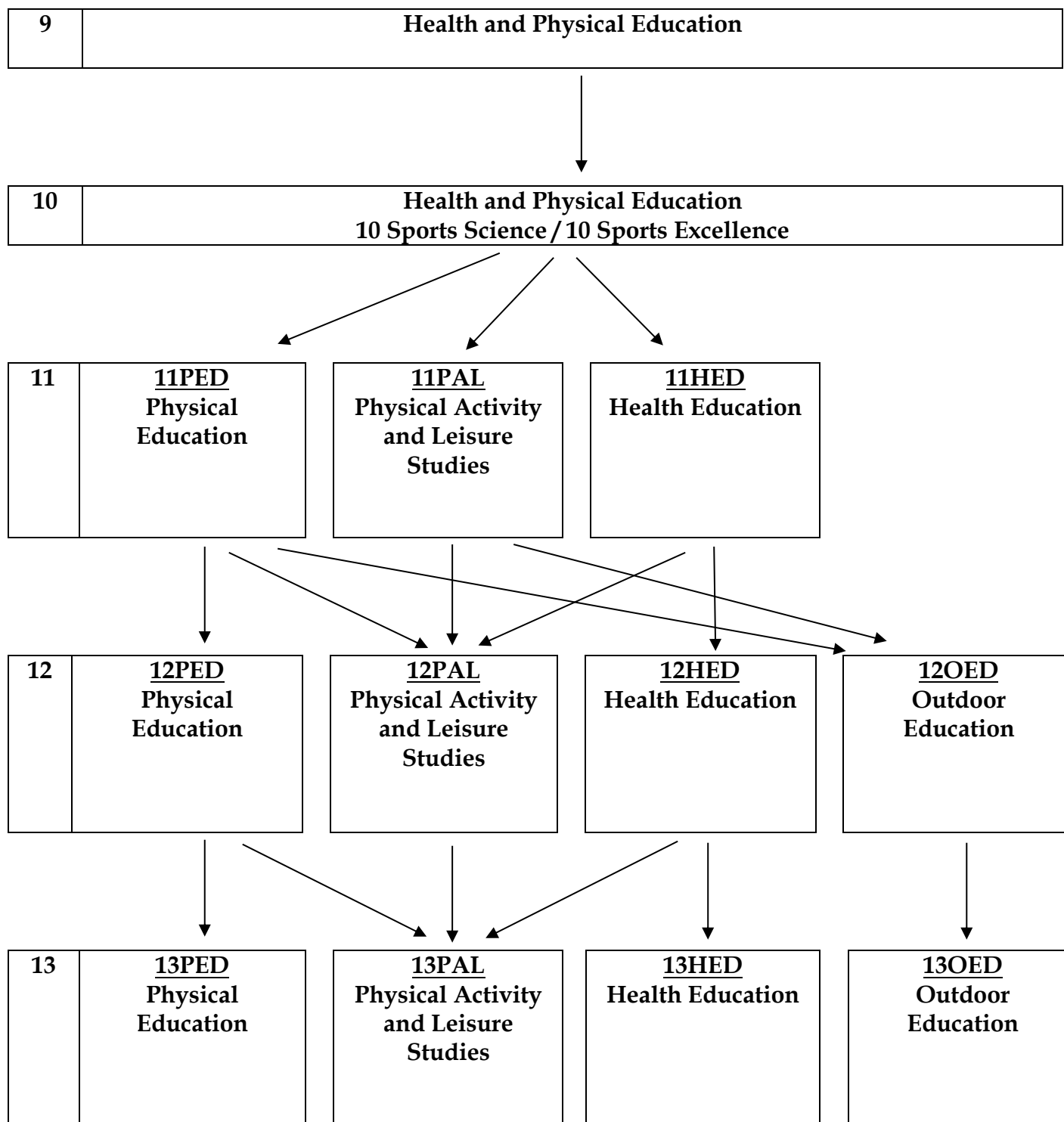
| <p><b>Year 9 – 13</b><br/> <b>English Language</b><br/> <i>Elementary</i><br/> <b>[11EL1 &amp; 11ELA]</b></p>   | <p><b>Year 9 – 13</b><br/> <b>English Language</b><br/> <i>Pre-Intermediate</i><br/> <b>[12EL2 &amp; 12ELB]</b></p>  | <p><b>Year 11 – 13</b><br/> <b>English Language</b><br/> <i>Intermediate</i><br/> <b>[11EL3 &amp; 11ELC]</b></p>  |
|---|--|---|
| <p><b>Prerequisites:</b></p> <p>Not applicable.</p>   | <p><b>Prerequisites:</b></p> <p>Gained 20 credits from 11EL1 or by discussion with HOF.</p>  | <p><b>Prerequisites:</b></p> <p>Gained at least 15 credits from 12EL2 or by discussion with HOF.</p>  |
| <p><b>Course Information:</b></p> <p>This course is for new arrivals in New Zealand who have limited previous knowledge of the English language.</p> <p>The course develops students' language competency and knowledge of the most common words for basic concepts, structural words and subject-specific technical vocabulary.</p> <p>This is developed through oral communication, explicit grammar teaching and a variety of reading and writing tasks at the 1000 words level.</p> <p>Assessment graded at Achieved or Not Achieved.</p> <p>Students will need two options of 11EL1.</p> <p>Internal Assessments:<br/> US31001 Read and understand simple texts for practical purposes<br/> US30994 Read and understand simple texts on familiar topics<br/> US27996 Write basic texts on familiar topics<br/> US27997 Write basic texts<br/> US27998 Complete Basic forms</p> <p><b>Endorseable: No</b></p> <p><b>Internal Credits: 25</b></p> <p><b>External Credits: 0</b></p> <p><b>Level of Credits: 1</b></p> <p><b>Leads to:</b><br/> 12EL2</p> | <p><b>Course Information:</b></p> <p>This course will further develop language and literacy skills in reading, writing, listening and speaking at the 2000 words level.</p> <p>Students in this class will be taught grammar and punctuation and will start developing basic academic reading and writing skills.</p> <p>Assessment graded at Achieved or Not Achieved.</p> <p>Students will need two options of 12EL2.</p> <p>Internal Assessments:<br/> US30995 Read and understand a straightforward text on a familiar topic<br/> US27999 Write a simple connected text on a familiar topic<br/> US28000 Write a simple text for a practical purpose<br/> US31026 Present information on a familiar topic (EL)<br/> US31006 Read and understand a range of straightforward written texts independently<br/> US30985 Demonstrate understanding of straightforward spoken instructions in a familiar context<br/> OR US31020 Participate in an interview</p> <p><b>Endorseable: No</b></p> <p><b>Internal Credits: 35</b></p> <p><b>External Credits: 0</b></p> <p><b>Level of Credits: 2</b></p> <p><b>Leads to:</b><br/> 11EL3</p> | <p><b>Course Information:</b></p> <p>The course will teach English language at an intermediate level of proficiency. The course will continue to develop academic skills of reading, writing, listening and speaking with special attention given to grammar, syntax and academic vocabulary.</p> <p>Assessments can be graded with Achieved, Merit or Excellence.</p> <p>Students will need two options of 11EL3.</p> <p>Internal Assessments:<br/> US30997 Read and understand text on a familiar topic<br/> US31004 Read a text for a practical purpose<br/> US31027 Present on a familiar topic<br/> US28068 Write text on a familiar topic<br/> US28069 Write texts for practical purposes<br/> US31008 Read and understand a range of written texts independently</p> <p><b>Endorseable: No</b></p> <p><b>Internal Credits: 30</b></p> <p><b>External Credits: 0</b></p> <p><b>Level of Credits: 3</b></p> <p><b>Leads to:</b><br/> 12EL4</p> |

# ENGLISH LANGUAGE

## Ms Gerzic - International Village

| <b>Year 12</b><br><b>English Language</b><br><i>Advanced</i><br><b>[12EL4 &amp; 12ELD]</b>   | <b>Year 13</b><br><b>English Language</b><br><b>[13ELL]</b>   | <b>Year 13</b><br><b>English for Academic</b><br><b>Purposes</b><br><b>[13EAP]</b>   |
|--|---|--|
| <b>Prerequisites:</b><br><br>Gained at least 10 credits from 11EL3 or by discussion with HOF.  | <b>Prerequisites:</b><br><br>Gained at least 10 credits or more from 11EL3 or 12EL4.  | <b>Prerequisites:</b><br><br>Gained at least 10 credits or more from 12EL4 or by discussion with HOF.  |
| <b>Course Information:</b><br><br>This course will teach English language at an upper-intermediate level of proficiency. The course will cover the four skills of reading, writing, speaking and listening. Special attention will be given to further development of conventions in writing: language features and accuracy (grammar and syntax). Critical reading and academic literacy skills are the focus of 12EL4 course where 3 of the English for Academic Purposes (Level 3) standards will be covered in preparation for year 13 EAP course.<br><br>Internal Assessments:<br>US30996 Read complex text in applied context<br>US28064 Present information on a familiar topic<br>US31035 Write complex texts on general topics<br>US30990 Understand spoken interaction in familiar context<br>US30511 Read and apply understanding in EAP<br>US30508 Write short crafted text using resources in EAP<br>US30510 Deliver a short presentation for academic purpose<br>AS91106 Form developed personal responses *R<br><br><b>Endorseable: No</b><br><br><b>Internal Credits: 51</b><br><br><b>External Credits: 0</b><br><br><b>Level of Credits: 2+</b><br><br><b>Leads to:</b><br><b>13 English for Academic Purposes</b> | <b>Course Information:</b><br><br>This course is only for ESL students and it offers a variety of assessments at Level 3 and 4 ELL. The students will also work on their writing portfolio of wide reading [English Achievement standard 91106].<br><br>This course must be taken in combination with 13EAP.<br><br>Internal Assessments (13ELL):<br>US30982 Understand spoken text on a familiar topic<br>US30997 Read a text on a familiar topic<br>US28062 Participate in a formal interview<br>US28068 Write a text on a familiar topic<br>US3133 Write a text in an applied context<br>US30989 Understand complex interaction in an applied context<br>AS91106 Form developed personal responses<br><br><b>Endorseable: No</b><br><br><b>Internal Credits: 34</b><br><br><b>External Credits: 0</b><br><br><b>Level of Credits: 2 and 3+</b> | <b>Course Information:</b><br><br>This course is open to all students, not only ESL. This course will teach the vocabulary needed for University and the high level of academic skills required in note-taking, reading, writing, presenting and information processing.<br><br>This is an internally assessed course offering Literacy credits in Reading and Writing required for University Entrance in New Zealand.<br><br>Students are strongly advised to take two options: 13EAP and 13ELL. HOF may allow some students to take one option (13EAP) in exceptional circumstances.<br><br>Internal Assessments (13EAP):<br>US22750 Write a crafted text using researched material *W<br>US22751 Read and process information *R<br>US22891 Deliver an oral presentation<br>AS91105 Use information literacy to form developed conclusion *R<br><br><b>Endorseable: No</b><br><br><b>Internal Credits: 21</b><br><br><b>External Credits: 0</b><br><br><b>Level of Credits: 2 and 3+</b> |

# HEALTH AND PHYSICAL EDUCATION COURSE PATHWAYS



# PHYSICAL EDUCATION

## Ms Wilson - Physical Education Office / Sports Hall

| <b>Year 11</b><br><b>Physical Education [11PED]</b>  | <b>Year 12</b><br><b>Physical Education [12PED]</b>   | <b>Year 13</b><br><b>Physical Education [13PED]</b>   |
|--|---|---|
| <b>Prerequisites:</b><br><br>Teacher recommendation based on attitude and effort in 10PED/10SPS/10SPX.   | <b>Prerequisites:</b><br><br>14 Credits at Level 1 PED. For new students 14 credits at Level 1 English and/or 14 credits at Level 1 Science, and/or the approval of the HOF of PE.  | <b>Prerequisites:</b><br><br>Must have achieved 14 credits at Level 2 PED and have the approval of the HOF of PE.   |
| <b>Course Information:</b><br><br>This course is designed to introduce students to the key biophysical and socio-cultural concepts of physical education. These include anatomy, biomechanics, exercise physiology, skill learning theory, risk and safety management, and societal influences on physical activity.<br><br>Students will learn through both theoretical and physical contexts, including snorkelling at Goat Island and High ropes.<br><br>This course is ideal for students who are passionate about sport and physical activity.<br><br><b>Internal Assessments:</b><br>AS90962 Influences on participation<br>AS90963 Function of the body<br>AS90964 Practical performance<br>AS90968 Responsible behaviour<br>AS90966 Interpersonal skills<br><br><b>Field Trip Costs:</b> are heavily subsidised. However, students can voluntarily contribute to the cost of one or both of the trips. Contribution to be advised.<br><br><b>Course Cost:</b><br><br><b>Endorseable: Yes*</b><br><i>NZQA Exception to Endorsement Rule</i><br><br><b>Internal Credits: 20</b><br><br><b>External Credits: 0</b><br><br><b>Level of Credits: 1</b><br><br><b>Leads to:</b><br>12 Physical Education<br>12 Outdoor Education<br>12 Physical Activity & Leisure Studies | <b>Course Information:</b><br><br>This course is an extension of the Level 1 PED course. Students will look more in depth at biophysical and socio-cultural concepts relating to physical activity.<br><br>Extensions to student's knowledge include the ability to analyse skills for improvement and evaluate performance improvement programmes. Students will also be challenged to think critically.<br><br><b>Internal Assessments:</b><br>AS91328 Analysis of skill improvement<br>AS91329 Biophysical principles for training<br>AS91330 Practical performance<br>AS91331 Sociology of sport<br>AS91336 Group processes<br><br><b>Course Cost:</b><br><br><b>Endorseable: Yes*</b><br><i>NZQA Exception to Endorsement Rule</i><br><br><b>Internal Credits: 20</b><br><br><b>External Credits: 0</b><br><br><b>Level of Credits: 2</b><br><br><b>Leads to:</b><br>13 Physical Education<br>13 Physical Activity & Leisure Studies<br>13 Outdoor Education | <b>Course Information:</b><br><br>This course is designed to develop higher level critical thinking skills and analyse in depth biophysical and socio-cultural concepts.<br><br>Students will appraise their own performance while considering all aspects that can impact on performance improvement. Their application of knowledge is an extension of the Level 2 PED programme.<br><br>Students will have the opportunity to sit the Physical Education Scholarship external assessment.<br><br><b>Internal Assessments:</b><br>AS91499 Skill analysis<br>AS91500 Performance improvement<br>AS91501 Practical performance<br>AS91505 Contemporary Leadership<br>AS91498 Influences on participation<br><br><b>Course Cost:</b><br><br><b>Endorseable: Yes *</b><br><i>NZQA Exception to Endorsement Rule</i><br><br><b>Internal Credits: 19</b><br><br><b>External Credits: 0</b><br><br><b>Level of Credits: 3</b><br><br><b>University Entrance Approved</b><br><b>Scholarship subject</b> |

# HEALTH EDUCATION

## Ms Wilson - Physical Education Office / Sports Hall

| Year 11<br>Health [11HED]  | Year 12<br>Health [12HED]   | Year 13<br>Health [13HED]  |
|--|---|--|
| <b>Prerequisites:</b><br><br>None.   | <b>Prerequisites:</b><br><br>14 credits at Level 1 Health. For new students 15 credits at Level 1 English and/or 14 credits at Level 1 English, or at the approval of the HOF of PE.  | <b>Prerequisites:</b><br><br>14 credits at Level 2 Health. For new students 15 credits at Level 2 English, or at the approval of the HOF of PE.  |
| <b>Course Information:</b><br><br><p>The Year 11 Health course explores current issues relevant to adolescents. Health aims to develop the knowledge, understandings, skills and attitudes needed to maintain and enhance personal health. Specifically exploring the four dimensions of Hauora.</p> <p>Students will understand how to use interpersonal skills that enhance relationships, demonstrate strategies for positive sexuality and make health enhancing decisions in drug related situations. Well-being is explored and strategies are implemented to take action for total well-being.</p> <p>Health is a university approved subject. Future study in Level 3 Health will allow students to develop the possibility of tertiary study in Health related subjects. This study can lead to the 4<sup>th</sup> biggest employment sector in New Zealand.</p> <p><b>Internal Assessments:</b><br/>AS90974 Sexuality<br/>AS90971 Action for well-being<br/>AS91097 Changes in well-being</p> <p><b>External Assessments:</b><br/>AS90972 Influences on eating patterns<br/>AS90975 Drugs and Alcohol</p> <p><b>Endorseable: Yes</b></p> <p><b>Internal Credits: 11</b></p> <p><b>External Credits: 8</b></p> <p><b>Level of Credits: 1</b></p> <p><b>Leads to:</b><br/><b>12 Health</b></p> | <b>Course Information:</b><br><br><p>The Year 12 Health course is aimed to develop the knowledge, understandings, skills and attitudes needed to maintain and enhance personal health. This includes enhancing interactions and relationships with other people.</p> <p>Students will understand issues within society including investigating adolescent health issues, sexuality and managing resilience in stressful or life changing scenarios. Students will take action to enhance the wellbeing of others.</p> <p>Health is a university approved subject. Future study in Level 3 Health will allow students to develop the possibility of tertiary study in Health related subjects. This study can lead to the 4<sup>th</sup> biggest employment sector in New Zealand.</p> <p><b>Internal Assessments:</b><br/>AS91236 Management change<br/>AS91239 Sexuality and gender<br/>AS91237 Health promotion</p> <p><b>External Assessments:</b><br/>AS91235 Health issue</p> <p><b>Endorseable: Yes</b></p> <p><b>Internal Credits: 15</b></p> <p><b>External Credits: 5</b></p> <p><b>Level of Credits: 2</b></p> <p><b>Leads to:</b><br/><b>13 Health</b></p> | <b>Course Information:</b><br><br><p>This course continues to develop the student's ability to critically evaluate and analyse contexts of Health related issues in our society.</p> <p>Students learn to analyse, evaluate, and, where appropriate, take action to enhance the well-being of individuals, communities, and society. Students are challenged to think critically about a range of personal and societal health-related perceptions and practices.</p> <p>Learning in senior health education provides the foundation for pathways to the social and health sciences (education, psychology, sociology, philosophy, politics, law, economics, medicine, health, justice, and social services).</p> <p><b>Internal Assessments:</b><br/>AS91461 NZ Health Issue *R<br/>AS91463 Evaluate Health Practises *R<br/>AS91464 Ethical issues in Relation to Well-being *R</p> <p><b>External Assessments:</b><br/>AS91462 International Health Issue *R/W</p> <p><b>Endorseable: Yes</b></p> <p><b>Internal Credits: 14</b></p> <p><b>External Credits: 5</b></p> <p><b>Level of Credits: 3</b></p> <p><b>University approved subject</b><br/><b>Scholarship subject</b></p> |

**PHYSICAL ACTIVITY AND LEISURE STUDIES**  
Ms Wilson – Physical Education Office / Sports Hall

|  |  |  |
|--|--|--|
|  |  |  |
|--|--|--|

[illegible]

# OUTDOOR EDUCATION

Ms Wilson – Physical Education Office / Sports Hall

| <b>Year 12</b><br><b>Outdoor Education [12OED]</b>   | <b>Year 13</b><br><b>Outdoor Education [13OED]</b>  |  |
|--|---|--|
| <b>Prerequisites:</b><br><br>Teacher recommendation based on attitude, effort and attendance. Numbers are limited.   | <b>Prerequisites:</b><br><br>14 credits at 12OED including practical kayaking credits, OR 14 credits at 12PED, OR HOF approval based on attitude, effort and attendance. Numbers are limited.   |  |
| <b>Course Information:</b><br><br>This course is designed to introduce students to Outdoor Education and provide students with experiences that are both new and exciting. Students will be theoretically and practically challenged in a wide range of outdoor contexts. Course content includes Kayaking, Tramping, Camping, Rock-climbing and weather interpretation.<br><br>Students suitable for this course will be motivated and willing to challenge themselves.<br><br><b>Internal Assessments:</b><br>US425 Tramping<br>US444 Rock climbing<br>US426 Camping<br>AS91333 Risk management<br>AS91330 Performance rock climbing<br>US20159 Weather interpretation<br>US32848 Kayaking<br><br><b>Field Trip Costs:</b> are heavily subsidised. However, students can voluntarily contribute to the cost of one or both of the multi-night trips. Contribution to be advised.<br><br><b>Endorseable:</b> No<br><br><b>Internal Credits:</b> 18<br><br><b>External Credits:</b> 0<br><br><b>Level of Credits:</b> 4 Level 1, 14 Level 2<br><br><b>Leads to:</b><br><b>13 Outdoor Education</b> | <b>Course Information:</b><br><br>Level 3 Outdoor Education is designed as a progression from Level 2 Outdoor Education. Students will build on their previous knowledge and experiences in the outdoors while gaining recognised outdoor skills.<br><br>The course builds towards a multi-night experience in a remote, wilderness area snow camp journey.<br><br>Suitable students for this course will be physically fit, motivated and willing to challenge themselves in a range of outdoor environments.<br><br><b>Internal Assessments:</b><br>US24663 Risk management<br>US28570 Kaitiakitanga<br>US32845 Leadership<br>AS91789 Devise strategies for physical activity outcome<br>AS91501 Quality performance<br>AS91504 Safety management issues<br><br><b>Field Trip Costs:</b> are heavily subsidised. However, students can voluntarily contribute to the cost of one or both of the multi-night trips. Contribution to be advised.<br><br><b>Endorseable:</b> No<br><br><b>Internal Credits:</b> 19<br><br><b>External Credits:</b> 0<br><br><b>Level of Credits:</b> 3 |  |

# LANGUAGE COURSE PATHWAYS

|   |         |        |          |
|---|---------|--------|----------|
| 9 | Chinese | German | Japanese |
|---|---------|--------|----------|



\* Those students who wish to study a language which they did not study in Year 9 must seek permission from the relevant HOF/TIC before submitting option preferences.

|    |         |        |          |
|----|---------|--------|----------|
| 10 | Chinese | German | Japanese |
|----|---------|--------|----------|



|    |                         |                        |                          |
|----|-------------------------|------------------------|--------------------------|
| 11 | <u>11CHI</u><br>Chinese | <u>11GER</u><br>German | <u>11JAP</u><br>Japanese |
|----|-------------------------|------------------------|--------------------------|



|    |                         |                        |                          |
|----|-------------------------|------------------------|--------------------------|
| 12 | <u>12CHI</u><br>Chinese | <u>12GER</u><br>German | <u>12JAP</u><br>Japanese |
|----|-------------------------|------------------------|--------------------------|



|    |                         |                        |                          |
|----|-------------------------|------------------------|--------------------------|
| 13 | <u>13CHI</u><br>Chinese | <u>13GER</u><br>German | <u>13JAP</u><br>Japanese |
|----|-------------------------|------------------------|--------------------------|



# CHINESE

## Miss Hsiao – Room C10

| <b>Year 11</b><br><b>Chinese [11CHI]</b>  | <b>Year 12</b><br><b>Chinese [12CHI]</b>   | <b>Year 13</b><br><b>Chinese [13CHI]</b>   |
|---|--|--|
| <b>Prerequisites:</b><br><br>Year 10 Chinese or in consultation with the HOF/TIC.<br>Students need to have displayed an understanding and competency in the four language skills of reading, writing, speaking and listening in Year 10 Chinese.  | <b>Prerequisites:</b><br><br>14 Credits in NCEA Level 1 Chinese or in consultation with the relevant HOF/TIC.  | <b>Prerequisites:</b><br><br>14 Credits in NCEA Level 2 Chinese or in consultation with the relevant HOF/TIC.  |
| <b>Course Information:</b><br><br>This course aims to develop their four language skills of speaking, listening, reading and writing to achieve NCEA Level One. The course will also extend student's knowledge to allow them to understand and produce more complex language.<br><br>Students are expected to communicate information, ideas, opinions, express and respond to personal ideas or opinions in areas of most immediate relevance. The content and language of the communication strand is targeted beyond the immediate context to include the expression of opinions.<br>You are expected to learn how to write and recognise up to 300 characters.<br><br>Internal Assessments:<br>AS90869 Presentation<br>OR<br>AS90870 Interaction portfolio<br>AND<br>AS90872 Writing portfolio<br><br>External Assessments:<br>AS90868 Listening<br>AS90871 Reading<br><br><b>Endorseable: Yes</b><br><br><b>Internal Credits: 9 or 10</b><br><br><b>External Credits: 10</b><br><br><b>Level of Credits: 1</b><br><br><b>Leads to: 12 Chinese</b> | <b>Course Information:</b><br><br>This is an intermediate course of Chinese building on the knowledge of language learned from NCEA Level One.<br><br>Students can use language variably and effectively to express and justify their own ideas and opinions and support or challenge those of others. They are able to use and identify the linguistic and cultural forms that guide interpretation and enable them to respond critically to texts.<br><br>You are expected to learn how to recognise up to 600 characters.<br><br>Internal Assessments:<br>AS91109 Interaction portfolio<br>OR<br>AS91110 Presentation<br>AND<br>AS91112 Writing portfolio<br><br>External Assessments:<br>AS91108 Listening<br>AS91111 Reading<br><br><b>Endorseable: Yes</b><br><br><b>Internal Credits: 9 or 10</b><br><br><b>External Credits: 10</b><br><br><b>Level of Credits: 2</b><br><br><b>Leads to: 13 Chinese</b> | <b>Course Information:</b><br><br>This is an advanced course consolidating and extending the Chinese language skills learned in NCEA Level Two.<br><br>Students can use language variably and effectively to express and justify their own ideas and opinions and support or challenge those of others. They are able to use and identify the linguistic and cultural forms that guide interpretation and enable them to respond critically to texts.<br><br>You are able to recognise up to 800 or more characters.<br><br>Internal Assessments:<br>AS91534 Presentation<br>OR<br>AS91535 Interaction portfolio<br>AND<br>AS91537 Writing portfolio<br><br>External Assessments:<br>AS91533 Listening<br>AS91536 Reading<br><br><b>Endorseable: Yes</b><br><br><b>Internal Credits: 8 or 11</b><br><br><b>External Credits: 10</b><br><br><b>Level of Credits: 3</b><br><br><b>University Entrance Approved</b><br><b>Examinable by Scholarship</b> |

| <h1 style="text-align: center;">GERMAN</h1> <h2 style="text-align: center;">Mrs Scheffer Cosslett - Room C12</h2>   |   |  |
|---|---|--|
| <b>Year 11</b><br><b>German [11GER]</b>   | <b>Year 12</b><br><b>German [12GER]</b>   | <b>Year 13</b><br><b>German [13GER]</b>  |
| <b>Prerequisites:</b><br><br>Year 10 German or in consultation with TIC or HOF. Students need to have displayed an understanding and competency in the four language skills of reading, writing, speaking and listening in Year 10 German.  | <b>Prerequisites:</b><br><br>Year 11 German or in consultation with TIC or HOF. Additionally, a minimum of 14 credits gained in Level 1 German or in consultation with TIC.   | <b>Prerequisites:</b><br><br>Year 12 German or after consultation with TIC or HOF. Additionally, a minimum of 14 credits must have been gained in Level 2 German.  |
| <b>Course Information:</b><br><br>German at Year 11 aims to increase the four language skills of speaking, listening, reading and writing. Students will learn to develop confidence in their written and spoken German at an intermediate level.<br><br>They will learn to express opinions, attitudes and emotions on familiar topics.<br><br>There are four Achievement standards available in this course – two are internally assessed and the other two are externally assessed.<br><br>Internal Assessments:<br>AS90885 Interaction portfolio<br>OR<br>AS90884 Presentation<br>AND<br>AS90887 Writing portfolio<br><br>External Assessments:<br>AS90883 Listening<br>AS90886 Reading<br><br><b>Endorseable: Yes</b><br><br><b>Internal Credits: 9 or 10</b><br><br><b>External Credits: 10</b><br><br><b>Level of Credits: 1</b><br><br><b>Leads to: 12 German</b> | <b>Course Information:</b><br><br>This course is designed to develop on from the structures and vocabulary covered in NCEA Level 1. Students will be challenged to further develop the macro skills of speaking and listening with specific emphasis on conversational German.<br><br>There are four Achievement standards available in this course – two are internally assessed and the other two are externally assessed.<br><br>Internal Assessments:<br>AS91124 Interaction portfolio<br>OR<br>AS91125 Presentation<br>AND<br>AS91127 Writing portfolio<br><br>External Assessments:<br>AS91123 Listening<br>AS91127 Reading<br><br><b>Endorseable: Yes</b><br><br><b>Internal Credits: 9 or 10</b><br><br><b>External Credits: 10</b><br><br><b>Level of Credits: 2</b><br><br><b>Leads to: 13 German</b> | <b>Course Information:</b><br><br>This is an advanced course best suited to those who have completed studying the beginners' level of the German language. The course continues to extend the students' vocabulary and grammatical structures for communicating in German and prepare students for the Level 3 examination at the end of the year.<br><br>There are four Achievement standards available in this course – two are internally assessed and the other two are externally assessed.<br><br>Internal Assessments:<br>AS91550 Interaction portfolio<br>OR<br>AS91549 Presentation<br>AND<br>AS91552 Writing portfolio<br><br>External Assessments:<br>AS91548 Listening<br>AS92551 Reading<br><br><b>Endorseable: Yes</b><br><br><b>Internal Credits: 8 or 11</b><br><br><b>External Credits: 10</b><br><br><b>Level of Credits: 3</b><br><br><b>University Entrance Approved</b><br><b>Examinable by Scholarship</b> |

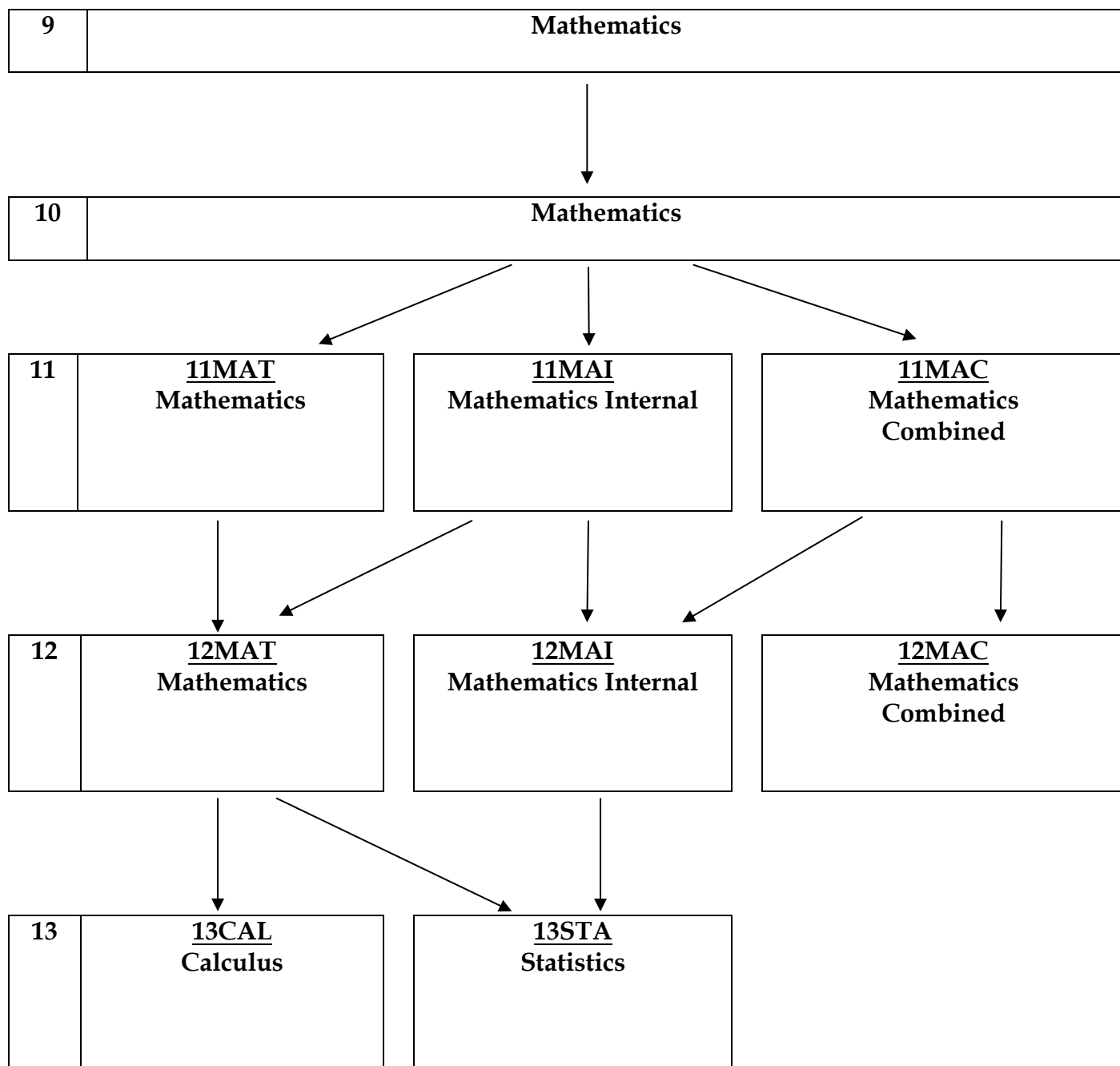
# JAPANESE

## Ms M Chiba – Room C11

| <p style="text-align: center;"><b>Year 11</b><br/><b>Japanese [11JAP]</b></p>  | <p style="text-align: center;"><b>Year 12</b><br/><b>Japanese [12JAP]</b></p>  | <p style="text-align: center;"><b>Year 13</b><br/><b>Japanese[13JAP]</b></p>   |
|--|--|--|
| <p><b>Prerequisites:</b></p> <p>Year 10 Japanese or in consultation with TIC or HOF.<br/>Students need to have displayed an understanding and competency in the four language skills of reading, writing, speaking and listening in Year 10 Japanese.</p>  | <p><b>Prerequisites:</b></p> <p>Year 11 Japanese or in consultation with TIC or HOF. Additionally, a minimum of 14 credits gained in Level 1 Japanese or in consultation with TIC.</p>   | <p><b>Prerequisites:</b></p> <p>Year 12 Japanese or after consultation with TIC or HOF. Additionally, a minimum of 14 credits must have been gained in Level 2 Japanese.</p>   |
| <p><b>Course Information:</b></p> <p>Japanese at Year 11 aims to increase the four language skills of speaking, listening, reading and writing.</p> <p>Students will learn to develop confidence in both their written and spoken Japanese with specific reference to imparting information about themselves and their families.</p> <p>There are 4 Achievement standards available in this course – two are internally assessed and the other two are externally assessed.</p> <p>Internal Assessments:<br/>AS90894 Presentation<br/>AND<br/>AS90897 Writing portfolio</p> <p>External Assessments:<br/>AS90893 Listening<br/>AS90896 Reading</p> <p><b>Endorseable: Yes</b></p> <p><b>Internal Credits: 9</b></p> <p><b>External Credits: 10</b></p> <p><b>Level of Credits: 1</b></p> <p><b>Leads to: 12 Japanese</b></p> | <p><b>Course Information:</b></p> <p>This course is designed to build on the structures and vocabulary covered in Level 1 Japanese.</p> <p>Students will also be challenged to further develop their speaking and listening skills with a focus on natural, conversational Japanese. Greater emphasis is also placed on learning more Kanji.</p> <p>There are 4 Achievement standards available in this course – two are internally assessed and the other two are externally assessed.</p> <p>Internal Assessments:<br/>AS91135 Presentation<br/>AND<br/>AS91137 Writing portfolio</p> <p>External Assessments:<br/>AS91133 Listening<br/>AS91136 Reading</p> <p><b>Endorseable: Yes</b></p> <p><b>Internal Credits: 9</b></p> <p><b>External Credits: 10</b></p> <p><b>Level of Credits: 2</b></p> <p><b>Leads to: 13 Japanese</b></p> | <p><b>Course Information:</b></p> <p>This is an advanced course.</p> <p>This course continues to extend the students' working knowledge of vocabulary, Kanji and grammatical structures, coupled with more advanced speaking and listening skills. This course prepares students to further their study at University.</p> <p>There are 4 Achievement standards available in this course – two are internally assessed and the other two are externally assessed.</p> <p>Internal Assessments:<br/>AS91554 Presentation<br/>AND<br/>AS91557 Writing portfolio</p> <p>External Assessments:<br/>AS91553 Listening<br/>AS91556 Reading</p> <p><b>Endorseable: Yes</b></p> <p><b>Internal Credits: 8</b></p> <p><b>External Credits: 10</b></p> <p><b>Level of Credits: 3</b></p> <p><b>University Entrance Approved</b><br/><b>Examinable by Scholarship</b></p> |

# MATHEMATICS

## COURSE PATHWAYS



# MATHEMATICS

Mr Stanton – Room C2

| <b>Year 11<br/>Mathematics<br/>[11MAT]</b>  | <b>Year 11<br/>Mathematics Internal<br/>[11MAI]</b>   | <b>Year 11<br/>Mathematics Combined<br/>[11MAC]</b>  |
|---|---|--|
| <b>Prerequisites:</b><br><br>Gains at least 4 A's out of 6 topics in the Level 5 topic tests or end-of-year examination or HOF's discretion.  | <b>Prerequisites:</b><br><br>Gains at least 2 A's out of 6 topics in the Level 5 topic tests or end-of-year examination or HOF's discretion.  | <b>Prerequisites:</b><br><br>None.   |
| <b>Course Information:</b><br><br>This course is for those students intending to continue Mathematics to Level 2 and 3.<br><br>There are six Achievement Standards available in this course – three are internally assessed and the other three are externally assessed.<br><br>Internal Assessments:<br>AS91035 Multivariate Data<br>AS91032 Trigonometry<br>AS91026 Number<br><br>External Assessments:<br>AS91037 Chance & Data<br>AS91027 Algebra<br>AS91028 Graphs<br><br><b>Course Cost: None Workbook provided</b><br><br><b>Endorseable: Yes</b><br><br><b>Internal Credits: 11</b><br><br><b>External Credits: 12</b><br><br><b>Level of Credits: 1</b><br><br><b>Leads to: 12MAT or 12MAI</b> | <b>Course Information:</b><br><br>This course is for those students intending to continue Mathematics to Level 2 and 3.<br><br>This course consists of six Achievement Standards, five of which are internally assessed and one externally assessed.<br><br>Internal Assessments:<br>AS91026 – Number<br>AS91035 – Multivariate Data<br>AS91032 – Trigonometry<br>AS91029 – Linear Algebra<br>AS91030 – Measurement<br><br>External Assessments:<br>AS91037 – Chance & Data<br><br><b>Course Cost: None Workbook provided</b><br><br><b>Endorseable: Yes</b><br><br><b>Internal Credits: 16</b><br><br><b>External Credits: 4</b><br><br><b>Level of Credits: 1</b><br><br><b>Leads to: 12MAI</b> | <b>Course Information:</b><br><br>A basic Mathematics course for students in order that they may gain the Numeracy requirement for NCEA Level 1.<br><br>This course includes three Unit Standards and three Achievement Standards.<br><br>However, the Numeracy requirement can only be met via AS's or US's, not a combination of both. All standards are internally assessed.<br><br>Internal Assessments:<br>AS91026 – Number<br>AS91030 – Measurement<br>AS91035 – Multivariate Data<br>US26623 – Number<br>US26627 – Measurement<br>US26626 – Statistics<br><br><b>Course Cost: None Workbook provided</b><br><br><b>Endorseable: No</b><br><br><b>Internal Credits: 21</b><br><br><b>External Credits: 0</b><br><br><b>Level of Credits: 1</b><br><br><b>Leads to: 12MAC</b> |

# MATHEMATICS

Mr Stanton – Room C2

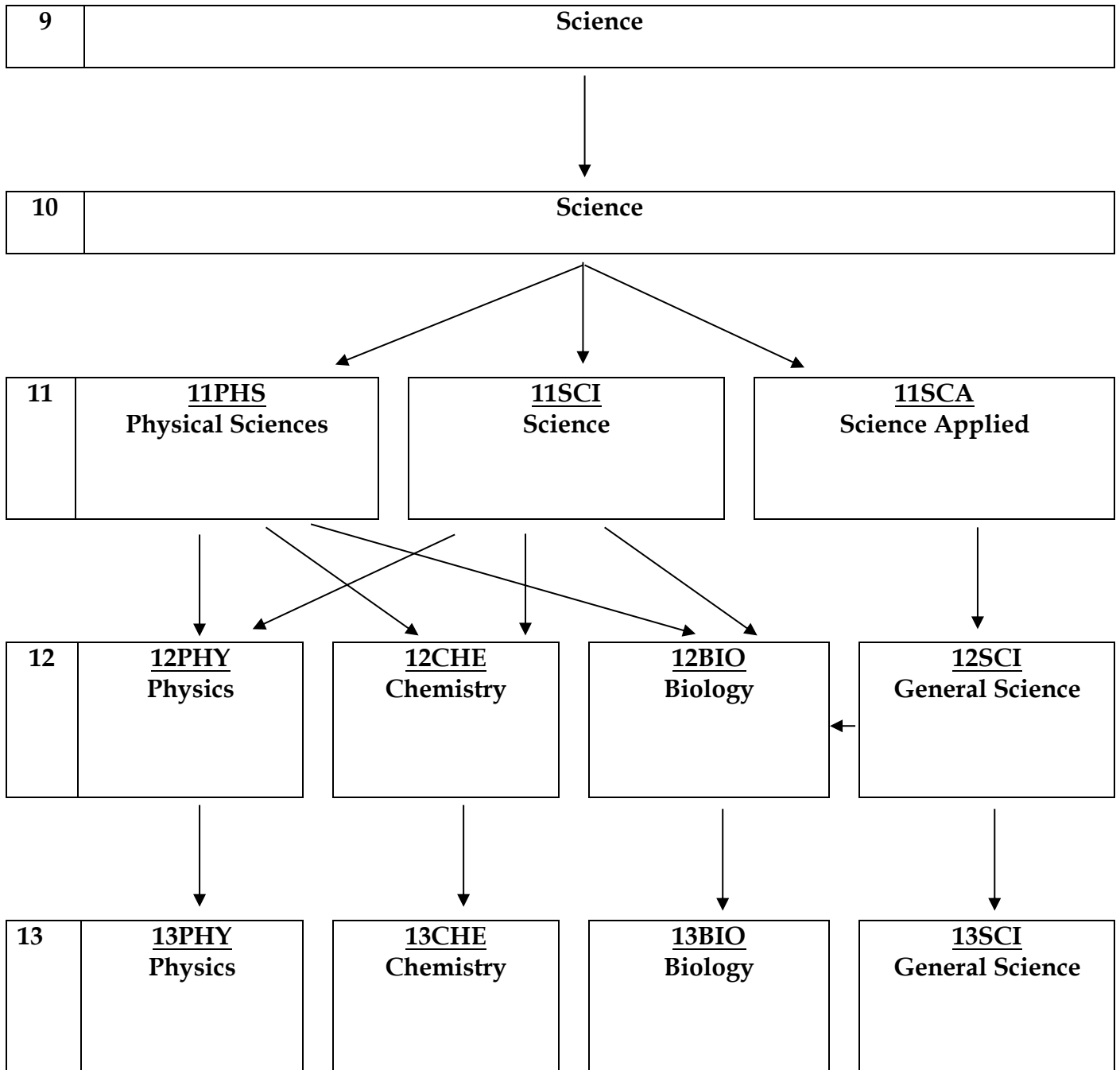
| <b>Year 12<br/>Mathematics<br/>[12MAT]</b>   | <b>Year 12<br/>Mathematics Internal<br/>[12MAI]</b>   | <b>Year 12<br/>Mathematics Combined<br/>[12MAC]</b>   |
|--|---|---|
| <b>Prerequisites:</b><br><br>At least 15 Mathematics Level 1 credits from Achievement Standards (including AS91027) or HOF's discretion.   | <b>Prerequisites:</b><br><br>At least 12 Mathematics Level 1 credits from Achievement Standards or HOF's discretion.  | <b>Prerequisites:</b><br><br>10 Numeracy Credits from Unit Standards or at least 7 Mathematics Level 1 credits from Achievement Standards or HOF's discretion.  |
| <b>Course Information:</b><br><br>A Mathematics course whose content is that prescribed for Mathematics at Level 2.<br><br>This course consists of five Level 2 Achievement Standards, two of which are internally assessed and three are externally assessed.<br><br>This course is designed to cater for those who wish to study Calculus and/or Statistics at NCEA Level 3.<br><br><i>A graphics calculator is required for this course.</i><br><br>Internal Assessments:<br>AS91259 – Trigonometry<br>AS91257 – Graphs<br><br>External Assessments:<br>AS91261 – Algebra<br>AS91262 – Calculus<br>AS91267 – Probability<br><br><b>Course Cost: None Workbook provided</b><br><br><b>Endorseable: Yes</b><br><br><b>Internal Credits: 7</b><br><br><b>External Credits: 13</b><br><br><b>Level of Credits: 2</b><br><br><b>Leads to: 13CAL and/or 13STA</b> | <b>Course Information:</b><br><br>A Mathematics course whose content is that prescribed for Mathematics at Level 2.<br><br>This course consists of six Level 2 Achievement Standards, five of which are internally assessed and one externally assessed.<br><br>This course is not designed for students to lead on to Calculus but could lead to Statistics following a very good performance during the year.<br><br><i>A graphics calculator is required for this course.</i><br><br>Internal Assessments:<br>AS91259 – Trigonometry<br>AS91256 – Co-ordinates<br>AS91264 – Statistics<br>AS91260 – Networks<br>AS91268 – Simulations<br><br>External Assessment:<br>AS91267 – Probability<br><br><b>Course Cost: None Workbook provided</b><br><br><b>Endorseable: Yes</b><br><br><b>Internal Credits: 13</b><br><br><b>External Credits: 4</b><br><br><b>Level of Credits: 2</b><br><br><b>Leads to: 13STA</b> | <b>Course Information:</b><br><br>A Mathematics course for those students who have not achieved the pre-requisite for 12MAT or 12MAI (have gained less than 12 Mathematics Level 1 credits).<br><br>This course includes Level 1 Achievement Standards and Level 2 Achievement Standards.<br><br>Internal Assessments:<br>AS91032 – Trigonometry<br>AS91036 – Bivariate Data<br>AS91259 – Trigonometry<br>AS91258 – Sequences<br>AS91256 – Co-ordinates<br>AS91260 – Networks<br><br><b>Course Cost: None Workbook provided</b><br><br><b>Endorseable: No</b><br><br><b>Internal Credits: 6 Level 1 and 9 Level 2</b><br><br><b>External Credits: 0</b><br><br><b>Level of Credits: 1 and 2</b> |

# MATHEMATICS

Mr Stanton – Room C2

| <p><b>Year 13<br/>Statistics [13STA]</b></p>   | <p><b>Year 13<br/>Calculus [13CAL]</b></p>   |  |
|--|--|--|
| <p><b>Prerequisites:</b></p> <p>15 credits from NCEA Level 2 Mathematics or HOF's discretion.</p>  | <p><b>Prerequisites:</b></p> <p>15 credits from NCEA Level 2 Mathematics (including AS91261 and AS91262) or HOF's discretion.</p>  |  |
| <p><b>Course Information:</b></p> <p>The course consists of five Achievement Standards, three of which are internally assessed and the other two are externally assessed.</p> <p>It is recommended by the University of Auckland that students intending to study Biological, Environmental and Health or Human Sciences and/or Mathematical and Information Sciences complete this course. This course may be taken in conjunction with 13CAL.</p> <p><i>A graphics calculator is required for this course.</i></p> <p>Internal Assessments:<br/>AS91580 – Time Series<br/>AS91581 – Bivariate Data<br/>AS91582 – Inferencing</p> <p>External Assessments:<br/>AS91585 – Probability<br/>AS91586 – Distributions</p> <p><b>Course Cost: None Workbook provided</b></p> <p><b>Endorseable: Yes</b></p> <p><b>Internal Credits: 12</b></p> <p><b>External Credits: 8</b></p> <p><b>Level of Credits: 3</b></p> <p><b>University Entrance Approved<br/>Examinable by Scholarship</b></p> | <p><b>Course Information:</b></p> <p>The course consists of four Achievement Standards, one of which is internally assessed and the other three are externally assessed.</p> <p>It is recommended by the University of Auckland that students intending to study Physical Sciences and/or Mathematical and Information Sciences complete this course.</p> <p><i>A graphics calculator is required for this course.</i></p> <p>Internal Assessments:<br/>AS91575 – Trigonometry</p> <p>External Assessments:<br/>AS91577 – Algebra<br/>AS91578 – Differentiation<br/>AS91579 – Integration</p> <p><b>Course Cost: None Workbook provided</b></p> <p><b>Endorseable: Yes</b></p> <p><b>Internal Credits: 4</b></p> <p><b>External Credits: 17</b></p> <p><b>Level of Credits: 3</b></p> <p><b>University Entrance Approved<br/>Examinable by Scholarship</b></p> |  |

# SCIENCE COURSE PATHWAYS





**Mr Thomas - Room 69**

41

# GENERAL SCIENCE

Mr Cartwright – Room 52

|  | <b>Year 12</b><br><b>General Science [12SCI]</b>  | <b>Year 13</b><br><b>General Science [13SCI]</b>   |
|--|---|--|
|  | <b>Prerequisites:</b><br><br>From 11SCA – 14 Internal credits and attempted the External Assessment.<br>From 11SCI + 11PHY – 14 credits, including attempted the External Assessment.<br>OR with permission of HOF/TIC.   | <b>Prerequisites:</b><br><br>14 credits from 12SCI, 12BIO, 12CHE or 12PHY (including having attempted the External Assessment).  |
|  | <b>Course Information:</b><br><br>This is mainly an internally assessed course which allows students to gain credits at A, M and E. There is an external assessment at the end of the course, making the subject endorseable. Topics are taken from Biology, Chemistry, Physics and Earth and Space Science.<br><br><b>Internal Assessments:</b><br>AS91162 Identifying ions in solution<br>AS91168 Physics investigation<br>AS91172 Atomic and nuclear physics<br>AS91189 Geological processes in NZ<br>AS91190 Extreme environment (optional)<br><br><b>External Assessments:</b><br>AS91191 Extreme earth events<br><br><b>Endorseable: Yes</b><br><br><b>Internal Credits: 14 (+ 3 optional credits)</b><br><br><b>External Credits: 4</b><br><br><b>Level of Credits: 2</b><br><br><b>Leads to: 13 General Science</b> | <b>Course Information:</b><br><br>An internally and externally assessed course, studying UE standards. The External Assessments make the course endorseable. The course is a UE approved subject with a focus on Earth and Space Science.<br><br>The course is suitable for students who are motivated to complete independent research and present their findings. Good time-management and organisational skills are required.<br><br><b>Internal Assessments:</b><br>AS91411 Socio-scientific issue in Earth and Space Science * R/W<br>AS91389 Chemical processes(Opt) * R/W (TBC)<br>AS91412 Date a geological event<br>AS91415 Investigate an aspect of Astronomy * R<br><br><b>External Assessments:</b><br>AS91413 Ocean system * R/W<br>AS91414 Atmosphere systems * R/W<br><br><b>Endorseable: Yes</b><br><br><b>Internal Credits: 12 (+ 3 optional credits)</b><br><br><b>External Credits: 8</b><br><br><b>Level of Credits: 3</b> |

# BIOLOGY

**Mrs Goulding - Room 36**

|  | <b>Year 12<br/>Biology [12BIO]</b>   | <b>Year 13<br/>Biology [13BIO]</b>  |
|--|--|---|
|  | <b>Prerequisites:</b><br><br>14 credits or better in Science Level 1 including AS90948 (Biology) or at HOF discretion.   | <b>Prerequisites:</b><br><br>14 credits or better in NCEA Level 2 Biology or at HOF discretion.   |
|  | <b>Course Information:</b><br><br>This course is designed to give full coverage of the Biology Curriculum at Level 7.<br><br>It aims to provide a foundation for the future study of Biology at Level 8.<br><br>Internal Assessments:<br>AS91158 Ecological patterns<br>AS91153 Practical investigation<br>AS91155 Animal adaptations<br><br>External Assessments:<br>AS91157 Genetic variation<br>AS91159 Gene expression<br><br><b>Endorseable: Yes</b><br><br><b>Internal Credits: 11</b><br><br><b>External Credits: 8</b><br><br><b>Level of Credits: 2</b><br><br><b>Leads to:</b><br><b>13 Biology</b><br><b>13 Science</b> | <b>Course Information:</b><br><br>This course is designed to give full coverage of the Biology Curriculum at Level 8.<br><br>It aims to provide a foundation for the future study of Biology at tertiary level.<br><br>Internal Assessments:<br>AS91601 Practical investigation<br>AS91604 Human homeostasis * R<br>AS91602 Socio-Scientific issue<br><br>External Assessments:<br>AS91603 Plants and animals * R/W<br>AS91606 Human evolution * R/W<br><br><b>Endorseable: Yes</b><br><br><b>Internal Credits: 10</b><br><br><b>External Credits: 9</b><br><br><b>Level of Credits: 3</b><br><br><b>University Entrance Approved</b><br><b>Examinable by Scholarship</b> |

# CHEMISTRY

**Mr Wade – Room 56**

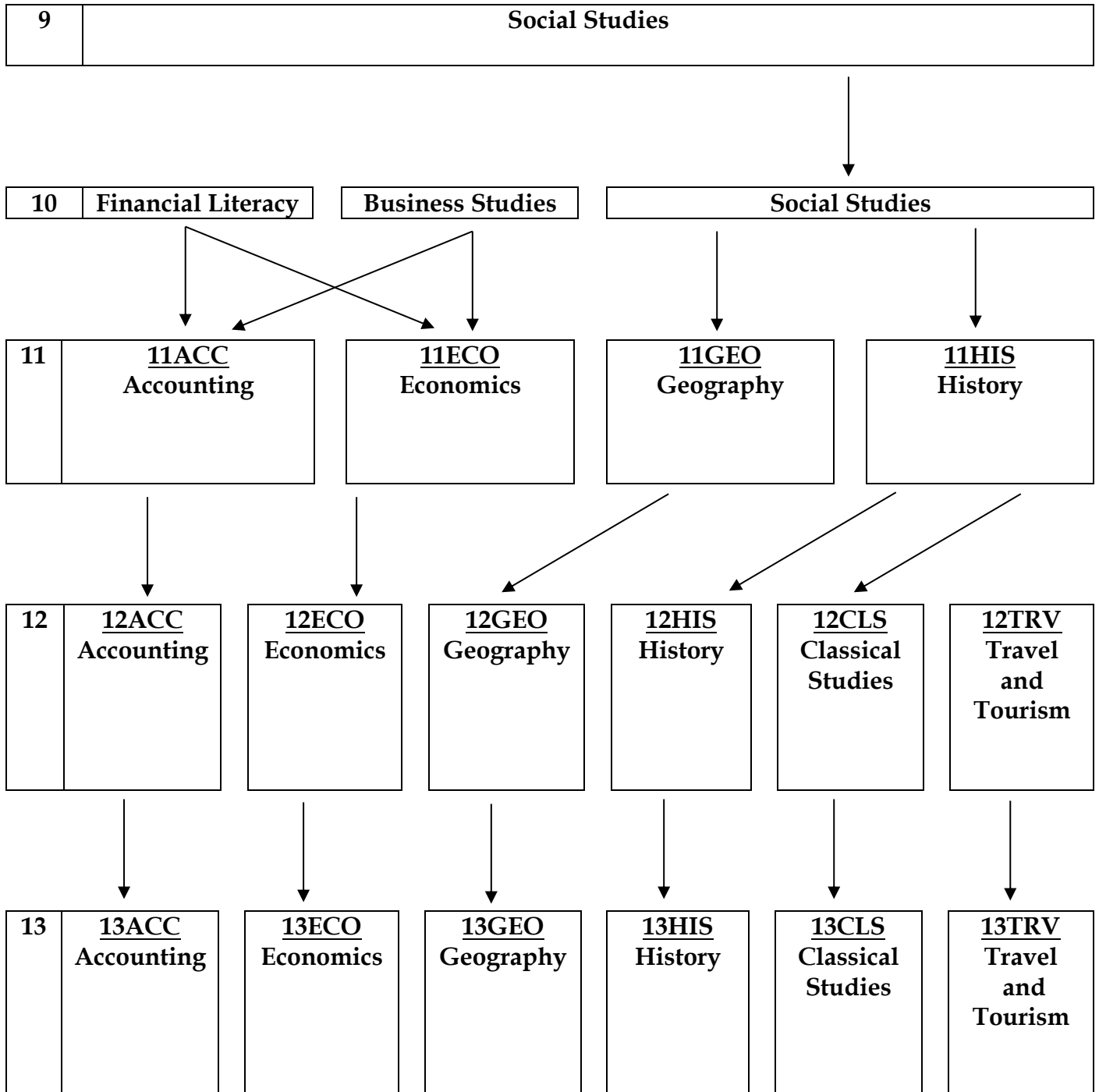
|  | <b>Year 12<br/>Chemistry [12CHE]</b>  | <b>Year 13<br/>Chemistry [13CHE]</b>   |
|--|---|--|
|  | <p><b>Prerequisites:</b></p> <p>2 External standards passed at level 1 Science (must include Achievement Standard 1.5)<br/>or<br/>14 credits from Level 1 Alternative Science plus Achievement Standard 1.5.</p>  | <p><b>Prerequisites:</b></p> <p>2 out of 3 External standards passed at Level 2 Chemistry.</p>   |
|  | <p><b>Course Information:</b></p> <p>This course follows the national curriculum for Chemistry, preparing students for Level 3 Chemistry. It provides a broad foundation for future studies in any of the Science areas.</p> <p>Topics covered include:<br/>The nature of bonding, structure and energy changes.<br/>The properties of organic compounds.<br/>Chemical reactivity.<br/>Carrying out titration investigations.<br/>Carrying out Redox investigations.</p> <p>Internal Assessments:<br/>AS91167 Redox<br/>AS91910 Titrations</p> <p>External Assessments:<br/>AS91164 Structure and Thermochem<br/>AS91165 Organic<br/>AS91166 Reactivity</p> <p><b>Endorseable: Yes</b></p> <p><b>Internal Credits: 7</b></p> <p><b>External Credits: 13</b></p> <p><b>Level of Credits: 2</b></p> <p><b>Leads to:</b><br/><b>13 Chemistry</b></p> | <p><b>Course Information:</b></p> <p>This course builds on and extends the knowledge and practical skills gained in the Level 2 Chemistry course.</p> <p>This is an academic course that prepares students for tertiary education.</p> <p>This course involves both theory work and a significant amount of practical laboratory work.</p> <p>Internal Assessments:<br/>AS91388 Spectroscopy<br/>AS91393 Redox</p> <p>External Assessments:<br/>AS91390 Structure and energy<br/>AS91391 Organic<br/>AS91392 Aqueous systems</p> <p><b>Endorseable: Yes</b></p> <p><b>Internal Credits: 6</b></p> <p><b>External Credits: 15</b></p> <p><b>Level of Credits: 3</b></p> <p><b>University Entrance Approved</b><br/><b>Examinable by Scholarship</b></p> |

# PHYSICS

Mr Thomas – Room 69

|  | <b>Year 12</b><br><b>Physics [12PHY]</b>  | <b>Year 13</b><br><b>Physics [13PHY]</b>  |
|--|---|---|
|  | <b>Prerequisites:</b><br><br>14 credits or better in Science Level 1 including 90940 (Mechanics) or at HOF discretion.  | <b>Prerequisites:</b><br><br>14 credits or better in NCEA Level 2 Physics including Mechanics or electricity or at HOF discretion.  |
|  | <b>Course Information:</b><br><br>The course follows the Year 12 Physics syllabus, including <ul style="list-style-type: none"> <li>• Light and Waves</li> <li>• Electricity</li> <li>• Mechanics</li> <li>• Nuclear radioactivity</li> </ul> <p>This is an academic course; and as such, students have very high expectations placed upon them. Homework is essential.</p> <p>Internal Assessments:<br/>           AS91168 Practical skills<br/>           AS91172 Atomic and Nuclear</p> <p>External Assessments:<br/>           AS91170 Light and Waves (optional standard)<br/>           AS91171 Mechanics<br/>           AS91173 Electricity and magnetism</p> <p><b>Endorseable: Yes</b></p> <p><b>Internal Credits: 7</b></p> <p><b>External Credits: 12 (+ 4 optional)</b></p> <p><b>Level of Credits: 2</b></p> <p><b>Leads to:</b><br/>           13 Physics<br/>           13 Science</p> | <b>Course Information:</b><br><br>The course follows the Year 13 Physics syllabus, including <ul style="list-style-type: none"> <li>• Mechanics</li> <li>• Waves</li> <li>• Electricity</li> <li>• Nuclear</li> </ul> <p>The course builds on Year 12 Physics. It will also prepare students for Scholarship- should they wish to sit.</p> <p>14 credits or more in 13PHY will set students up for ANY degree option or career opportunity- Physics is held in very high regard with employers.</p> <p>Internal Assessments:<br/>           AS91521 Practical skills<br/>           AS91525 Atomic and Nuclear</p> <p>External Assessments:<br/>           AS91523 Light and waves<br/>           AS91534 Mechanics<br/>           AS91536 Electricity and magnetism</p> <p><b>Endorseable: Yes</b></p> <p><b>Internal Credits: 7</b></p> <p><b>External Credits: 16</b></p> <p><b>Level of Credits: 3</b></p> <p><b>University Entrance Approved</b><br/> <b>Examinable by Scholarship</b></p> |

# SOCIAL SCIENCES COURSE PATHWAYS



# ACCOUNTING

Ms Balogh – Room 61

| <b>Year 11</b><br><b>Accounting [11ACC]</b>   | <b>Year 12</b><br><b>Accounting [12ACC]</b>   | <b>Year 13</b><br><b>Accounting [13ACC]</b>   |
|---|---|---|
| <b>Prerequisites:</b><br><br>None   | <b>Prerequisites:</b><br><br>10 Credits Year 11 Accounting or in consultation with the HOF.   | <b>Prerequisites:</b><br><br>12 Credits NCEA Accounting Level 2 or 18 credits at Excellence Level 1.  |
| <b>Course Information:</b><br><br>This subject will be useful to the student from a personal, business and general commerce perspective, as topics include: financial accounting, community organisations and societies and the application of accounting principles, and analysis when studying accounts. The major topics will be the pathway for future study of accounting at Level 2.<br><br>Internal Assessments:<br>AS90977 Process financial transactions<br>AS90979 Prepare financial information for a community organisation AGM.<br>AS90981 Financial decision-making<br><br>External Assessments:<br>AS90978 Prepare Financial Statements for Sole Proprietors<br><br><b>Endorseable: Yes</b><br><br><b>Internal Credits: 12</b><br><br><b>External Credits: 5</b><br><br><b>Level of Credits: 1</b><br><br><b>Leads to: 12 Accounting</b> | <b>Course Information:</b><br><br>It is essential to have studied accounting at Year 11 level. The emphasis of the Level 2 course is on subsystems as part of the accounting process. The students will be able to analyse the appropriate systems including the necessary internal control procedures and carry out the accounting entries as part of the accounting process.<br><br>Internal Assessments:<br>AS91179 Accounts Receivable<br>AS91175 XERO Processing<br>AS91386 Inventory<br>AS91481 Contemporary accounting issue for decision-making<br><br>External Assessments:<br>AS91176 Reporting<br><br><b>Endorseable: Yes</b><br><br><b>Internal Credits: 14</b><br><br><b>External Credits: 5</b><br><br><b>Level of Credits: 2</b><br><br><b>Leads to: 13 Accounting</b> | <b>Course Information:</b><br><br>The prescription focuses on accounting for partnerships and companies and manufacturing with emphasis being placed on preparation of, analysis, interpretation of final reports and decision making. This level introduces a more academic approach with the introduction of the requirements of the accounting profession. Students who wish to enter AS90500 (3.1) 4 credits and/or scholarship may do so if they attend extra classes in their own time.<br><br>Internal Assessments:<br>AS91405 Partnerships – Processing<br>AS91409 Job costing subsystems<br><br>External Assessments:<br>AS91406 Companies – Reporting<br>AS91408 Demonstrate understanding of management accounting to inform decision making<br><br><b>Endorseable: Yes</b><br><br><b>Internal Credits: 8</b><br><br><b>External Credits: 9</b><br><br><b>Level of Credits: 3</b><br><br><b>University Entrance Approved</b><br><b>Examinable by Scholarship</b> |

# ECONOMICS

**Dr Pavin Masilamani – Room 60 or Ms Balogh – Room 61**

| <b>Year 11</b><br><b>Economics [11ECO]</b>   | <b>Year 12</b><br><b>Economics [12ECO]</b>   | <b>Year 13</b><br><b>Economics [13ECO]</b>  |
|--|--|---|
| <b>Prerequisites:</b><br><br>None  | <b>Prerequisites:</b><br><br>14 Credits in Year 11 Mathematics and English, or Year 11 Economics or in consultation with HOF.  | <b>Prerequisites:</b><br><br>14 Credits in Level 2 Economics or 14 Credits in Level 2 English plus 14 credits in Level 2 Mathematics or in consultation with HOF.   |
| <b>Course Information:</b><br><br>This course focuses on how two sectors (households and firms) interact through the market. The market influences how resources are used and determines prices.<br><br>During the course students are expected to develop thinking, investigative, statistical and decision-making skills. This is a useful basis for a better understanding of how economics affects our everyday lives.<br><br>Internal Assessments:<br>AS90987 Govt. Decisions<br>AS90988 Interdependence<br>AS90984 Producer decisions<br><br>External Assessments:<br>AS90983 Demand<br>AS90985 Supply<br>AS90986 Market Equilibrium<br><br><b>Endorseable: Yes</b><br><br><b>Internal Credits: 12</b><br><br><b>External Credits: 12</b><br><br><b>Level of Credits: 1</b><br><br><b>Leads to: 12 Economics</b> | <b>Course Information:</b><br><br>This course will give students a useful insight into issues that affect all New Zealanders – employment, inflation, growth, trade and inequality.<br><br>These issues are studied within the discipline of economics. Assessment requires students to keep a watchful eye on current events affecting these issues.<br><br>Internal Assessments:<br>AS91225 Unemployment * R<br>AS91226 Statistical Data<br><br>External Assessments:<br>AS91222 Inflation<br>AS91223 International Trade<br>AS91224 Growth<br><br><b>Endorseable: Yes</b><br><br><b>Internal Credits: 8</b><br><br><b>External Credits: 12</b><br><br><b>Level of Credits: 2</b><br><br><b>Leads to: 13 Economics</b> | <b>Course Information:</b><br><br>This course is divided into three main sections: resource allocation via the market system; resource allocation via the public sector (government) and aggregate economic activity and policy.<br><br>Graphs are used widely throughout the course to illustrate economic ideas, along with student research.<br><br>Internal Assessments:<br>AS91401 Micro-economics * R<br><br>External Assessments:<br>AS91399 Market Equilibrium * R/W<br>AS91400 Marginal Analysis * R/W<br>AS91403 Macro-economics * R/W<br><br><b>Endorseable: Yes</b><br><br><b>Internal Credits: 5</b><br><br><b>External Credits: 14</b><br><br><b>Level of Credits: 3</b><br><br><b>University Entrance Approved</b><br><b>Examinable by Scholarship</b> |



# CLASSICAL STUDIES

Mr White – Room S5

|  | <b>Year 12</b><br><b>Classical Studies [12CLS]</b>   | <b>Year 13</b><br><b>Classical Studies [13CLS]</b>   |
|--|--|--|
|  | <b>Prerequisites:</b><br><br>12 Credits in Level 1 English, History or Geography or with the approval of the HOF.  | <b>Prerequisites:</b><br><br>10 Credits in History, English, Classical Studies or Geography or with the approval of the HOF.   |
|  | <b>Course Information:</b><br><br>Classical Studies is the study of the civilisations of classical Greece and Rome through disciplines such as History, Literature, Art and Philosophy.<br><br>Topics include: <ul style="list-style-type: none"> <li>• Social and political life of ancient Rome</li> <li>• Homer's Odyssey</li> </ul><br>Internal Assessments:<br>AS91202 Ancient Culture * R<br>AS91204 Significant event * R<br><br>External Assessments:<br>AS91200 Ideas and values * R/W<br>AS91203 Socio-political life * R/W<br><br><b>Endorseable: Yes</b><br><br><b>Internal Credits: 10</b><br><br><b>External Credits: 10</b><br><br><b>Level of Credits: 2</b><br><br><b>Leads to:</b><br><b>13 Classical Studies</b><br><b>13 History</b> | <b>Course Information:</b><br><br>The Classical Studies course covers the Art, Philosophy, History and Literature of the Classical World, recognised to be the basis of western civilisation.<br><br>Topics include: <ul style="list-style-type: none"> <li>• Alexander the Great, Augustus, Julius Caesar</li> <li>• Roman Art and Architecture</li> </ul><br>Internal Assessments:<br>AS91397 Ideologies * R<br>AS91398 Cultures across time * R<br><br>External Assessments:<br>AS91395 Significance of Art *R/W<br>AS91396 Historical figure * R/W<br><br><b>Endorseable: Yes</b><br><br><b>Internal Credits: 12</b><br><br><b>External Credits: 14</b><br><br><b>Level of Credits: 3</b><br><br><b>University Entrance Approved</b><br><b>Examinable by Scholarship</b> |

# GEOGRAPHY

**Ms Roach – Room 85**

| <p style="text-align: center;"><b>Year 11<br/>Geography [11GEO]</b></p>  | <p style="text-align: center;"><b>Year 12<br/>Geography [12GEO]</b></p>   | <p style="text-align: center;"><b>Year 13<br/>Geography [13GEO]</b></p>   |
|--|---|---|
| <p><b>Prerequisites:</b></p> <p>None required.</p>   | <p><b>Prerequisites:</b></p> <p>14 credits in Level 1 Geography or with the approval of the HOF.</p>  | <p><b>Prerequisites:</b></p> <p>14 credits in Level 2 Geography or with the approval of the HOF.</p>  |
| <p><b>Course Information:</b></p> <p>Year 11 Geography builds on the concepts and skills taught in Social Studies. The course explores the relationship between the natural and cultural environment through examining, local volcanic eruptions and global earthquakes. Microclimate research and a local urban issue, will also be investigated.</p> <p>A field trip exploring Mount Tarawera or a local alternative is a key component of the course.</p> <p>Geographic skills ranging from map work to graphing are incorporated into topics throughout the year.</p> <p>Internal Assessments:<br/>AS91011 Geographic Research<br/>AS91012 NZ Geographic Issue<br/>AS91013 Global Pattern</p> <p>External Assessments:<br/>AS91007 Extreme Natural Events<br/>AS91010 Geographic skills</p> <p><b>Field Trip Costs: \$220</b></p> <p><b>Endorseable: Yes</b></p> <p><b>Internal Credits: 10</b></p> <p><b>External Credits: 8</b></p> <p><b>Level of Credits: 1</b></p> <p><b>Leads to: 12 Geography</b></p> | <p><b>Course Information:</b></p> <p>Year 12 Geography involves analysis and research of the natural landscape of the Tongariro Volcanic Centre in the central North Island. Studies of the cultural environment involve the exploration of the local and global geographic patterns of crime and the use of 1080 in NZ.</p> <p>Two field trips investigating natural processes in the Tongariro Volcanic Centre and urban crime in Auckland are key components of the course.</p> <p>Geographic skills ranging from map work to graphing are incorporated into topics throughout the year.</p> <p>Internal Assessments:<br/>AS91241 Urban Pattern<br/>AS91244 Geographic Research<br/>AS91246 Global Pattern</p> <p>External Assessments:<br/>AS91240 Natural Environment * R<br/>AS91243 Geographic skills</p> <p><b>Field Trip Costs: \$350</b></p> <p><b>Endorseable: Yes</b></p> <p><b>Internal Credits: 11</b></p> <p><b>External Credits: 8</b></p> <p><b>Level of Credits: 2</b></p> <p><b>Leads to: 13 Geography</b></p> | <p><b>Course Information:</b></p> <p>Year 13 Geography involves the analysis of the cultural process of tourism and research in a selected natural environment. Studies of the cultural environment explore the geographic issue of human trafficking and the global pattern of impacts and use of coral reefs. A field trip to Rotorua supports the study of tourism as a cultural process.</p> <p>A three day trip to Rotorua is a key component of the course.</p> <p>Geographic skills ranging from map work to graphing are incorporated into topics throughout the year.</p> <p>Internal Assessments:<br/>AS91428 Contemporary Event * R<br/>AS91431 Geographic Issue * R<br/>AS91432 Global Pattern * R</p> <p>External Assessments:<br/>AS91427 Tourism Development * R/W<br/>AS91429 Geographic Skills * R/W</p> <p><b>Field Trip Costs: \$360 (estimate)</b></p> <p><b>Endorseable: Yes</b></p> <p><b>Internal Credits: 11</b></p> <p><b>External Credits: 8</b></p> <p><b>Level of Credits: 3</b></p> <p><b>University Entrance Approved<br/>Examinable by Scholarship</b></p> |

# HISTORY

## Mr Collier - Room S8

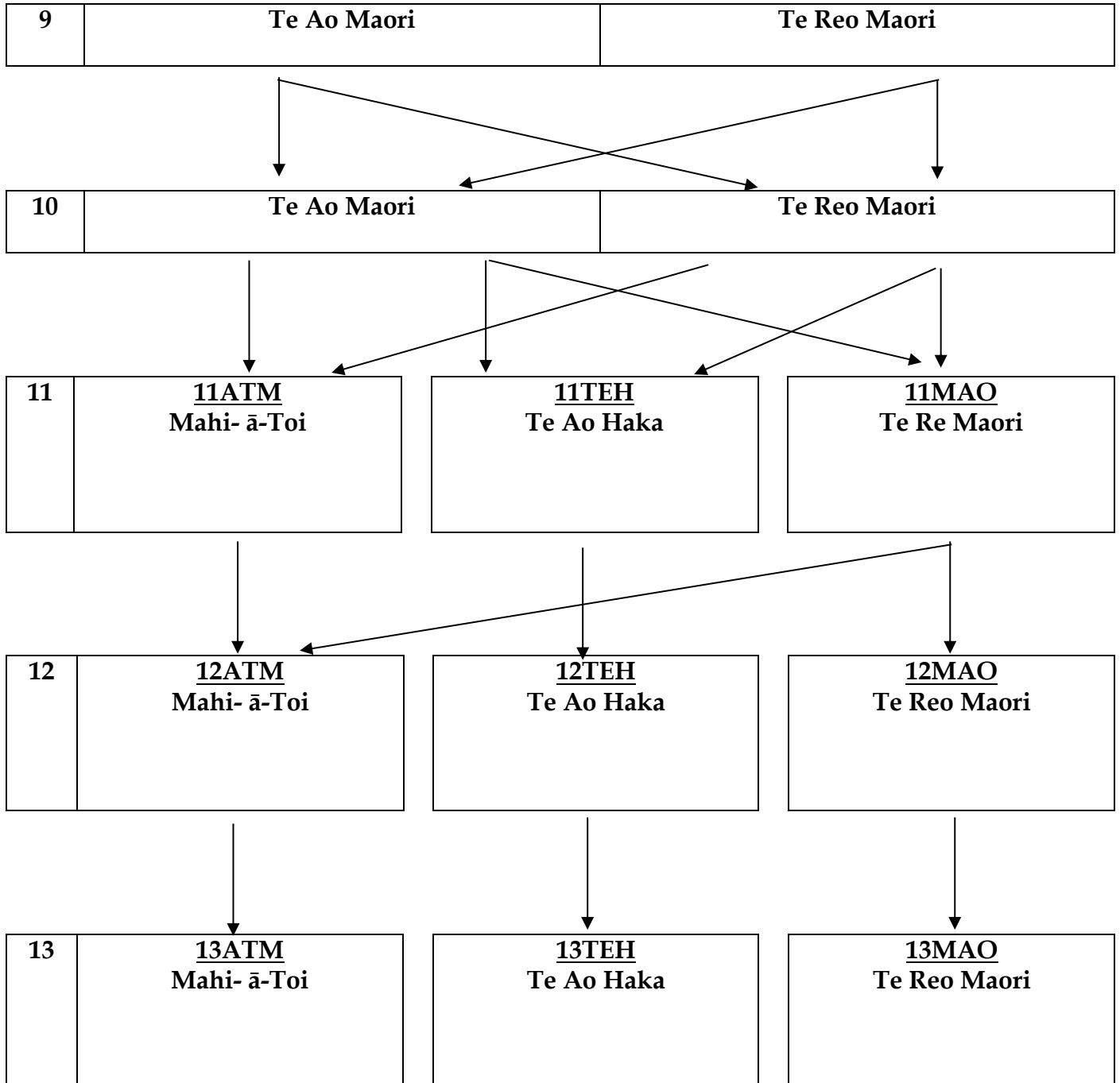
| <b>Year 11<br/>History [11HIS]</b>   | <b>Year 12<br/>History [12HIS]</b>  | <b>Year 13<br/>History [13HIS]</b>  |
|--|---|---|
| <b>Prerequisites:</b><br><br>None  | <b>Prerequisites:</b><br><br>16 Credits in Year 11 History or with the approval of the HOF.   | <b>Prerequisites:</b><br><br>16 Credits in Year 12 History or with the approval of the HOF.   |
| <b>Course Information:</b><br><br>Year 11 History is a natural extension of the work done in Social Studies classes.<br><br>The course covers twentieth century historical themes, which are important and interesting to New Zealanders today.<br><br>History teaches students how to research information, think clearly and organise their finding, process sources of information, and present their findings in written form.<br><br>Topics studied are: <ul style="list-style-type: none"> <li>❖ World War II – Causes and Consequences</li> <li>❖ Black Civil Rights in the USA – Different perspectives</li> </ul><br><br>Internal Assessments:<br>AS91001 Investigation<br>AS91002 Shows understanding<br>AS91004 Perspectives<br><br>External Assessments:<br>AS91003 Interpret resources<br>AS91005 Causes / consequences<br><br><b>Endorseable: Yes</b><br><br><b>Internal Credits: 12</b><br><br><b>External Credits: 8</b><br><br><b>Level of Credits: 1</b><br><br><b>Leads to:</b><br><b>12 History</b><br><b>12 Classical Studies</b> | <b>Course Information:</b><br><br>Year 12 builds on skills and understanding gained in Year 11, although Year 11 History is not an essential prerequisite.<br><br>Students can choose from a wide range of topics for their internal assessment research projects.<br><br>Topics studied are: <ul style="list-style-type: none"> <li>❖ Vietnam War</li> <li>OR</li> <li>❖ Nazi Germany</li> </ul><br>AND <ul style="list-style-type: none"> <li>❖ The Russian Revolution</li> </ul><br><br>Internal Assessments:<br>AS91229 Carry out an inquiry * R<br>AS91230 Examine an event * R<br>AS91232 Perspectives * R<br><br>External Assessments:<br>AS91231 Examine sources * R/W<br>AS91233 Causes/consequences*R/W<br><br><b>Endorseable: Yes</b><br><br><b>Internal Credits: 14</b><br><br><b>External Credits: 9</b><br><br><b>Level of Credits: 2</b><br><br><b>Leads to:</b><br><b>13 History</b><br><b>13 Classical Studies</b> | <b>Course Information:</b><br><br>Year 13 History builds on the historical skills and understanding gained in Years 11 and/or 12. However, students can successfully complete this course without a history background.<br><br>Students focus on a topic of their choice for their internal assessment research project. Any topic is possible in consultation with their History teacher. The remainder of the course focuses on NZ History during the 19 <sup>th</sup> century including the Treaty of Waitangi, the NZ Wars, the Gold Rush and Women's Suffrage.<br><br>The aim of this is for students to build a strong understanding of how 21 <sup>st</sup> century NZ was formed and to allow students to gain historical perspective on national identity e.g. What makes us New Zealanders.<br><br>Year 13 History incorporates a field trip.<br><br>Internal Assessments:<br>AS91434 Research * R<br>AS91435 Analyse * R<br>AS91437 Perspectives * R<br><br>External Assessments:<br>AS91436 Analyse evidence * R/W<br>AS91438 Causes/consequences*R/W<br><br><b>Endorseable: Yes</b><br><br><b>Internal Credits: 15</b><br><br><b>External Credits: 10</b><br><br><b>Level of Credits: 3</b><br><br><b>University Entrance Approved</b><br><b>Examinable by Scholarship</b> |

# TRAVEL AND TOURISM

Mr White – Room S5

|  | <b>Year 12</b><br><b>Travel and Tourism [12TRV]</b>  | <b>Year 13</b><br><b>Travel and Tourism [13TRV]</b>  |
|--|--|--|
|  | <b>Prerequisites:</b><br><br>Level 1 Literacy and Level 1 Numeracy or at discretion of the TIC.  | <b>Prerequisites:</b><br><br>Level 2 Travel or at discretion of TIC.   |
|  | <b>Course Information:</b><br><br>The course covers Level Two Unit Standards in New Zealand tourism. Students will gain a range of new skills and information in the tourism industry, which is one of the fastest growing industries in New Zealand.<br><br>There will be 1 or 2 day trips to tourism attractions in Auckland during the year. Students may also be invited on an overnight trip to Rotorua.<br><br>This course is internally assessed.<br><br>Internal Assessments:<br>US23761 Reading in the tourism workplace<br>US24727 Describe and compare impacts of tourism on the physical environment<br>US24728 Work roles in tourism<br>US24729 World tourist destinations<br>US24730 Knowledge of tourism business<br>US24731 Destination New Zealand<br>US24732 Characteristics of tourism<br><br><b>Field Trip Costs: Nil</b><br><br><b>Endorseable: No</b><br><br><b>Internal Credits: 24</b><br><br><b>External Credits: 0</b><br><br><b>Level of Credits: 2</b><br><br><b>Leads to:</b><br><b>13 Travel and Tourism</b> | <b>Course Information:</b><br><br>The course covers knowledge of New Zealand, Australia and the Pacific Islands as travel destinations including key geographical features, attractions, activities, transport and accommodation services.<br><br>There will be 1 or 2 day trips to tourism attractions in Auckland during the year. Students may also be invited on an overnight trip to Rotorua.<br><br>This course is internally assessed.<br><br>Internal Assessments:<br>US18212 NZ as a tourist destination<br>US24733 Describe and promote NZ<br>US28211 Destination Australia<br>US3717 Destination South Pacific<br><br><b>Field Trip Costs: Nil</b><br><br><b>Endorseable: No</b><br><br><b>Internal Credits: 23</b><br><br><b>External Credits: 0</b><br><br><b>Level of Credits: 3</b> |

# TE AO MAORI COURSE PATHWAYS



# TE AO HAKA

Matua Jeff, Whaea Stacey, Matua Paratene - Marae

| Year 11<br>Te Ao Haka [11TEH]  | Year 12<br>Te Ao Haka [12TEH]   | Year 13<br>Te Ao Haka [13TEH]   |
|--|---|---|
| <b>Prerequisites:</b><br><br>Year 9 and 10 Te Ao Māori/Te Reo Māori or by special permission from the Head of Te Ao Māori.   | <b>Prerequisites:</b><br><br>10 Credits from Year 112 Te Ao Māori or by special permission from the Head of Te Ao Māori.  | <b>Prerequisites:</b><br><br>10 Credits from Year 12 Te Ao Māori or by special permission from the Head of Te Ao Māori.   |
| <b>Course Information:</b><br><br>This course will provide students with a common understanding of the knowledge, skills, attributes and attitudes associated within Te Ao Māori and Māori Performing Arts. Learning ranges from Waiata, mōteatea, haka, poi, waiata-ā-ringa and mau rākau.<br><br>These are the foundation skills for their journey if they wish to move through to Level 2 and 3 Te Ao Haka. Mahi done throughout the year will be assessed with two internal assessments and two external assessments.<br><br>This class is also a UE approved subject.<br><br>“He Māori ahau, e noho Māori nei ki tōku Ao Māori. Mā runga i tēnā ka Tōhea e au.”<br><br><b>Internal Assessments:</b><br>AS91976 Demonstrate understanding of key features of Te Ao Haka<br>AS91977 Perform an item from a Te Ao Haka discipline<br><br><b>External Assessments:</b><br>AS91978 Demonstrate understanding of categories within a Te Ao Haka discipline<br>AS91979 Demonstrate understanding of elements within a Te Ao Haka performance<br><br><b>Endorseable: Yes</b><br><br><b>Internal Credits: 12</b><br><br><b>External Credits: 8</b><br><br><b>Level of Credits: 1</b><br><br><b>Leads to: 12 Te Ao Haka</b><br><b>Leads to: 12 Te Reo Māori</b> | <b>Course Information:</b><br><br>This course will provide students with a common understanding of the knowledge, skills, attributes and attitudes associated within Te Ao Māori and Māori Performing Arts. Learning ranges from Waiata, mōteatea, haka, poi, waiata-ā-ringa and mau rākau.<br><br>These are the foundation skills for their journey if they wish to move through to Level 3 Te Ao Haka. Mahi done throughout the year will be assessed with two internal assessments and two external assessments.<br><br>This class is also a UE approved subject.<br><br>“He Māori ahau, e noho Māori nei ki tōku Ao Māori. Mā runga i tēnā ka Tōhea e au.”<br><br><b>Internal Assessments:</b><br>AS91980 Explore elements to create a section of a Te Ao Haka item<br>AS91981 Perform a Te Ao Haka item to respond to a local kaupapa<br><br><b>External Assessments:</b><br>AS91982 Compare a Te Ao Haka performance and one other performance<br>AS91983 Respond to a Te Ao Haka performance<br><br><b>Endorseable: Yes</b><br><br><b>Internal Credits: 12</b><br><br><b>External Credits: 8</b><br><br><b>Level of Credits: 2</b><br><br><b>Leads to: 13 Te Ao Haka</b> | <b>Course Information:</b><br><br>This course will provide students with a common understanding of the knowledge, skills, attributes and attitudes associated within Te Ao Māori and Māori Performing Arts. Learning ranges from Waiata, mōteatea, haka, poi, waiata-ā-ringa and mau rākau.<br><br>These are the foundation skills for their journey if they wish to move into Te Ao Haka and Te Ao Maori in the future. Mahi done throughout the year will be assessed with two internal assessments and two external assessments.<br><br>This class is also a UE approved subject.<br><br>“He Māori ahau, e noho Māori nei ki tōku Ao Māori. Mā runga i tēnā ka Tōhea e au.”<br><br><b>Internal Assessments:</b><br>AS91984 Reflect on a personal learning journey in a discipline of Te Ao Haka<br>AS91985 Perform three categories within a discipline of Te Ao Haka<br><br><b>External Assessments:</b><br>AS91986 Perform two Te Ao Haka disciplines<br>AS91987 Demonstrate understanding of a key role within Te Ao Haka<br><br><b>Endorseable: Yes</b><br><br><b>Internal Credits: 12</b><br><br><b>External Credits: 8</b><br><br><b>Level of Credits: 3</b> |

# TE REO MĀORI

Matua Jeff, Whaea Stacey, Matua Paratene - Marae

| Year 11<br>Te Reo Māori [11MĀO]  | Year 12<br>Te Reo Māori [12MĀO]   | Year 13<br>Te Reo Māori [13MĀO]  |
|--|---|--|
| <b>Prerequisites:</b><br><br>Year 9 and 10 Te Ao Māori/Te Reo Māori or by special permission from the Head of Te Ao Māori.   | <b>Prerequisites:</b><br><br>10 credits at Level 1 Te Reo Māori or by special permission from the Head of Te Ao Māori.  | <b>Prerequisites:</b><br><br>10 credits at Level 2 Te Reo Māori or by special permission from the Head of Te Ao Māori.   |
| <b>Course Information:</b><br><br>The aim of this course is to enable the students to grow in their ability to understand Te Reo Māori and build their confidence to speak Te Reo Māori.<br><br>There is an emphasis on using and understanding spoken and written Māori as a language of communication and interaction<br><br>“He Māori ahau, e noho Māori nei ki tōku Ao Māori. Mā runga i tēnā ka Tōhea e au.”<br><br>Internal Assessments:<br>AS91086 Presentation<br>AS91089 Writing portfolio<br><br>External Assessments:<br>AS91087 Reading<br>AS91088 Writing<br><br><b>Endorseable: Yes</b><br><br><b>Internal Credits: 12</b><br><br><b>External Credits: 12</b><br><br><b>Level of Credits: 1</b><br><br><b>Leads to: 12 Māori</b> | <b>Course Information:</b><br><br>The aim of this course is to enable the students to grow in their ability to understand Te Reo Māori and build their confidence to speak Te Reo Māori.<br><br>This course emphasises the use and understanding of spoken and written Māori as a language of communication in every social and cultural situation. It will focus on the structure of the language, vocabulary appropriate to various contexts, as well as figures of speech such as colloquialisms.<br><br>“He Māori ahau, e noho Māori nei ki tōku Ao Māori. Mā runga i tēnā ka Tōhea e au.”<br><br>Internal Assessments:<br>AS91285 Presentation<br>AS91288 Writing portfolio * W<br><br>External Assessments:<br>AS91286 Reading * R<br>AS91287 Writing * W<br><br><b>Endorseable: Yes</b><br><br><b>Internal Credits: 12</b><br><br><b>External Credits: 12</b><br><br><b>Level of Credits: 2</b><br><br><b>Leads to: 13 Māori</b> | <b>Course Information:</b><br><br>The aim of this course is to enable the students to grow in their ability to understand Te Reo Māori and build their confidence to speak Te Reo Māori.<br><br>This course explores topics that include iwi history, tikanga and the ongoing revitalisation of Te Reo Māori me ona tikanga. The subject also emphasises using and understanding spoken and written Maori as a language of teaching, communication and interaction.<br><br>“He Māori ahau, e noho Māori nei ki tōku Ao Māori. Mā runga i tēnā ka Tōhea e au.”<br><br>Internal Assessments:<br>AS91651 Presentation<br>AS91654 Writing portfolio * W<br><br>External Assessments:<br>AS91652 Reading * R<br>AS91653 Writing * W<br><br><b>Endorseable: Yes</b><br><br><b>Internal Credits: 12</b><br><br><b>External Credits: 12</b><br><br><b>Level of Credits: 3</b><br><br><b>University Entrance Approved</b><br><b>Examinable by Scholarship</b><br><b>There are opportunities for students to undertake te reo Māori papers from the University of Waikato.</b> |

# MAHI-Ā-TOI ACADEMY

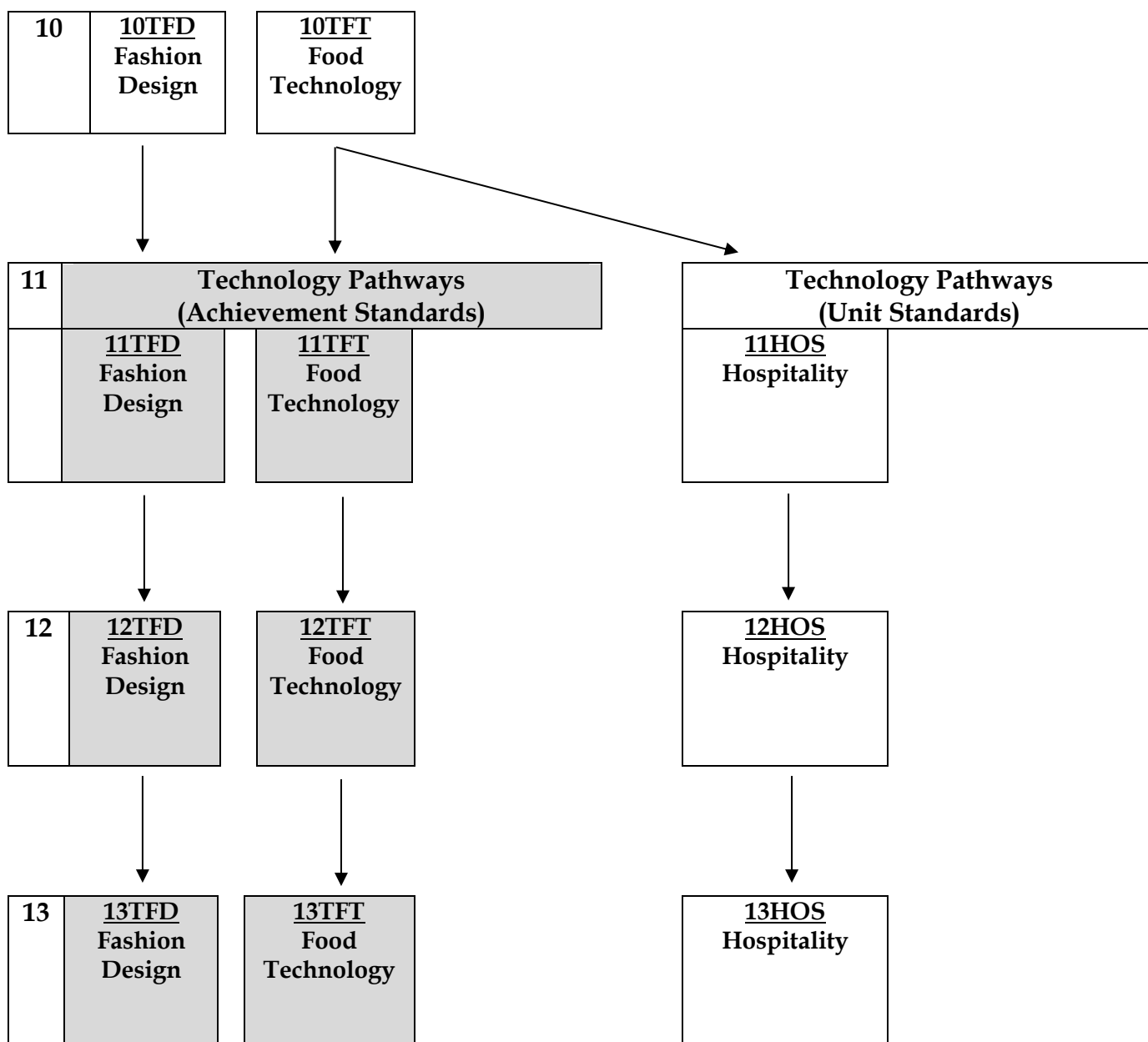
Matua Jeff – Marae/Whare Whakairo

| Year 11<br>Mahi-ā-Toi [11ATM]   | Year 12<br>Mahi-ā-Toi [12ATM]  | Year 13<br>Mahi-ā-Toi [13ATM]   |
|---|--|---|
| <b>Prerequisites:</b><br>Year 9 and 10 Te Ao Maori/Te Reo Maori or by special permission from the Head of Te Ao Māori and also an interview.  | <b>Prerequisites:</b><br>10 Credits from Year 12 Mahi-ā-Toi or by special permission from the Head of Te Ao Māori and also an interview.   | <b>Prerequisites:</b><br>10 Credits from Year 12 Mahi-ā-Toi.  |
| <b>Course Information:</b><br><br>This course will provide students with a common entry level understanding of the knowledge, skills, attributes and attitudes associated within Māori Arts.<br><br>Learning ranges from Kowhaiwhai Whakairo Rāranga and Kapa Haka.<br><br>These are the foundation skills for their journey if they wish to move through to the Level 2 and Level 3 Mahi-ā-Toi.<br><br>Mahi done throughout the year will be assessed by internal assessment submissions.<br><br><br><br><br><br><br><br><br><br>Internal Assessments:<br>US23005 Knowledge of carving<br>US23006 Knowledge of meaning in carving<br>US23007 Knowledge of carving<br>US23008 Describe carved images/objects<br><br><br><b>Endorseable: No</b><br><br><b>Internal Credits: 20</b><br><br><b>External Credits: 0</b><br><br><b>Level of Credits: 1</b> | <b>Course Information:</b><br><br>In this course students will be aiming for Level 2 credits towards NCEA, Creative Industries Endorsement.<br><br>Mahi done throughout the year will be assessed by internal assessment submissions.<br><br>In Level 2 Mahi-ā-Toi academy, students will analyse factors that influence the quality of individual performance in applied settings. Students complete units based on Toi Maori which covers Kapa Haka, Whakairo, Korero and Kowhaiwhai. Students apply advanced theory and apply their learning in practical settings.<br><br>A component of Mahi-ā-Toi is committing to a 10 week programme at Unitec, gaining experience in a Tertiary environment.<br><br>Another component is to commit to a week long trip to the Awatere on the east coast to gain work experience as an iwi carver.<br><br>Internal Assessments:<br>AS91310 Visual arts<br>AS91315 Visual arts<br>AS91325 Visual arts<br>US23009 Te Tauira Whakairo<br>US23010 Te Tauira Whakairo<br>US23011 Te Tauira Whakairo<br>US23012 Te Tauira Whakairo<br><br><b>Endorseable: No</b><br><br><b>Internal Credits: 30+</b><br><br><b>External Credits: 0</b><br><br><b>Level of Credits: 2</b> | <b>Course Information:</b><br><br>In Level 3 Mahi-ā-Toi academy, students will analyse factors that influence the quality of individual performance in applied settings. Students complete units based on Toi Maori which covers Kapa Haka, Whakairo, Korero and Kowhaiwhai. Students apply advanced theory and apply their learning in practical settings.<br><br>A component of Mahi-ā-Toi is committing to a 20 week programme at Unitec, gaining experience in a Tertiary environment.<br><br>Another component is to commit to a week long trip to the Awatere on the east coast to gain work experience as an iwi carver.<br><br>Internal Assessments:<br>AS91445 Visual arts<br>AS91450 Visual arts<br>AS91455 Visual arts<br>US23013 Te Tauira Whakairo<br>US23014 Te Tauira Whakairo<br>US23015 Te Tauira Whakairo<br>US23016 Te Tauira Whakairo<br><br><b>Endorseable: No</b><br><br><b>Internal Credits: 30+</b><br><br><b>External Credits: 0</b><br><br><b>Level of Credits: 3</b> |



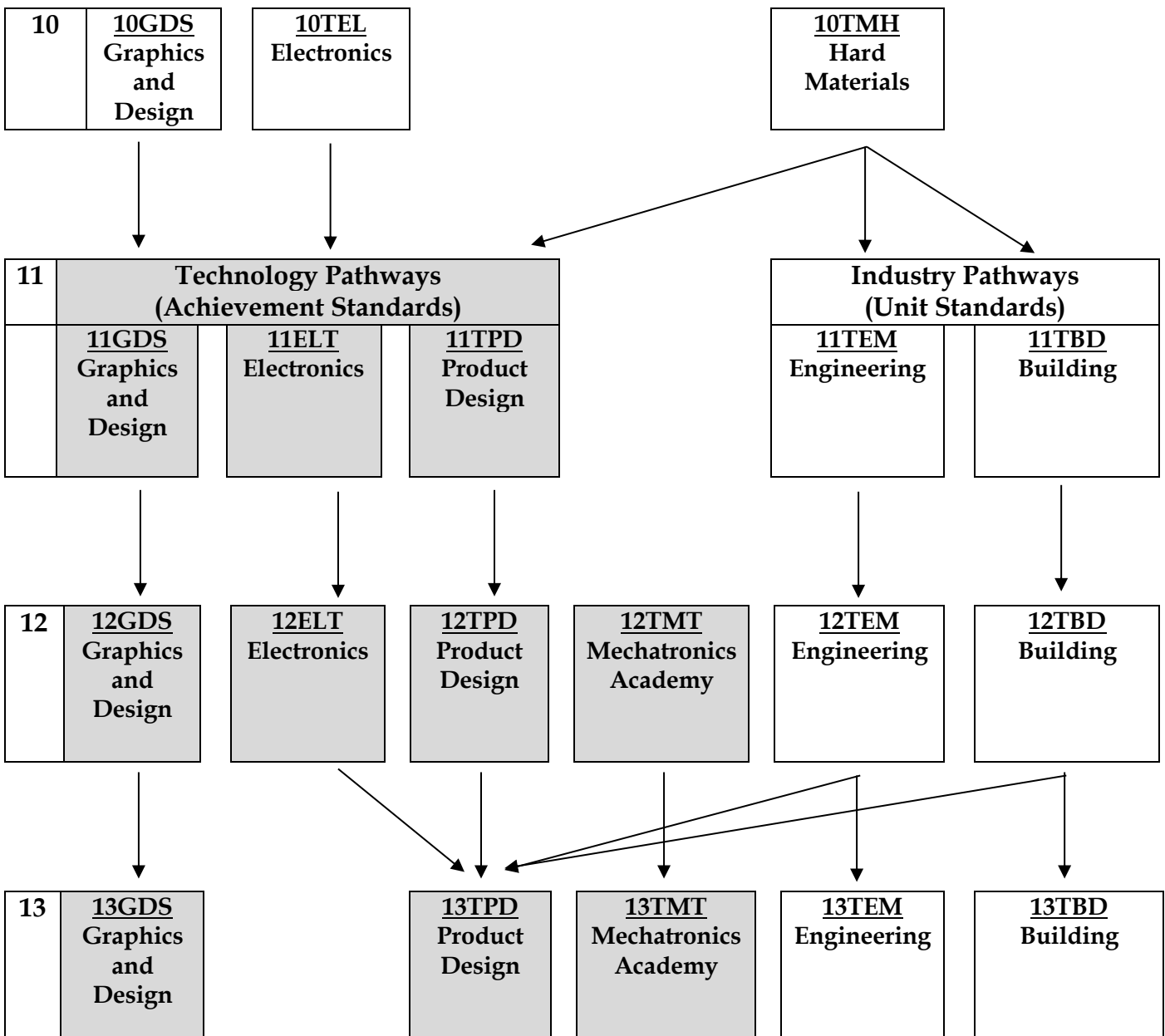
# TECHNOLOGY COURSE PATHWAYS

|   |                                   |
|---|-----------------------------------|
| 9 | Year 9 Technology<br>[9TFT, 9TMS] |
|---|-----------------------------------|



# TECHNOLOGY COURSE PATHWAYS

|   |                             |
|---|-----------------------------|
| 9 | Year 9 Technology<br>[9TMH] |
|---|-----------------------------|



# BUILDING AND FURNITURE

Mr Dodds or Mr Greaney - Room 77

| Year 11<br>Building [11TBD]   | Year 12<br>Building [12TBD]   | Year 13<br>Building [13TBD]   |
|---|---|---|
| <b>Prerequisites:</b><br><br>Demonstrate safe work practices in Year 10 or with HOF approval.   | <b>Prerequisites:</b><br><br>Demonstrate safe work practices in Technology and have gained 12 credits in Level 1 Building or with HOF approval.   | <b>Prerequisites:</b><br><br>Demonstrate safe work practices in Technology and have gained 12 credits in Level 2 Building or with HOF approval.   |
| <b>Course Information:</b><br><br>Students will undertake a course of study based on BCITO and FITEC Unit Standards.<br><br>Year 11 TBD is a skills based subject where the students will be taught traditional hand skills associated with cabinetry work. Projects include a Radiata Pine beside cabinet with drawer and door and a decorative trinket box.<br><br>This course is a pre-requisite to Year 12 Building from which the students can be selected for the Gateway Industrial Training Course.<br><br><br><br><br><br><br><br><br><br>Internal Assessments:<br>US24355 Material in BCATS projects<br>US24352 Safe working practices<br>US24356 Processes for BCATS projects<br>US25919 Hardware and fastenings<br>US25920 Joints for BCATS projects<br><br><br><br><br><br><br><br><br><br><b>Course Cost: \$90</b><br><br><b>Endorseable: No</b><br><br><b>Internal Credits: 19</b><br><br><b>External Credits: 0</b><br><br><b>Level of Credits: 1</b><br><br><b>Leads to:</b><br><b>12 Building</b> | <b>Course Information:</b><br><br>Students will undertake a course of study based on BCITO and FITEC Unit Standards.<br><br>Year 12 builds on the skills learnt in Year 11. Students at this level will be expected to work more independently, effectively manage their time and use a variety of portable power tools. The two projects which must be completed to gain maximum credits include a macrocarpa coffee table and a plywood toolbox.<br><br>Successful students will gain credits towards NCEA Level 2 and the Vocational Pathways; Manufacturing and Technology plus Construction and Infrastructure.<br><br><br><br><br><br><br><br><br><br>Internal Assessments:<br>US18917 Construct hand joints<br>US2199 Use and maintain hand tools<br>US16232 Use basic portable hand tools<br>US12932 Construct timber garden furniture<br><br><br><br><br><br><br><br><br><br><b>Course Cost: \$90</b><br><br><b>Endorseable: No</b><br><br><b>Internal Credits: 19</b><br><br><b>External Credits: 0</b><br><br><b>Level of Credits: 2</b><br><br><b>Leads to:</b><br><b>13 Building</b> | <b>Course Information:</b><br><br>Students will undertake a course of study based on BCITO Unit Standards and a Technology Achievement Standard.<br><br>Students will be expected to demonstrate a higher level of independence than Level 2. Students will select, use and apply appropriate tools and techniques and then monitor and document their progress throughout the construction of their mahogany chair.<br><br>Successful students must complete the chair to gain credits towards NCEA Level 3 and the Vocational Pathways; Manufacturing and Technology and Construction and Infrastructure.<br><br><br><br><br><br><br><br><br><br>Internal Assessments:<br>US29684 Undertake a Level 3 BCATS project<br>US29682 Select, use and maintain tools, equipment and machinery for a stage 3 BCATS project.<br><br><br><br><br><br><br><br><br><br><b>Course Cost: \$100</b><br><br><b>Endorseable: No</b><br><br><b>Internal Credits: 16</b><br><br><b>External Credits: 0</b><br><br><b>Level of Credits: 3</b> |

# ELECTRONICS

Mr Dempsey – Room 73

| <p><b>Year 11<br/>Electronics [11ELT]</b></p>   | <p><b>Year 12<br/>Electronics [12ELT]</b></p>  |  |
|---|--|--|
| <p><b>Prerequisites:</b></p> <p>Due to the nature of the Electronics theory, students should be taking either Year 11MAT or MAI.<br/>Year 10 Electronics advantageous.</p>  | <p><b>Prerequisites:</b></p> <p>12 Credits in Year 11 Electronics or 12 Credits in Level 1 Mathematics and Science or by approval of the TIC</p>   |  |
| <p><b>Course Information:</b></p> <p>Year 11 Electronics and Control Tech is a course developed from the Digital Technology Curriculum.<br/>There are three main learning and assessment tasks. We will look at electricity and its units of measurement, looking at the charge, current, voltage and power. Building simple circuits from schematics and how to measure different aspects.<br/>The main project will be making a line following robot from scratch and will involve assessment on prototyping including material component and process choices. Building and programming a microprocessor based electronic product including how to make printed circuit boards.<br/>There is also an external assessment that will take the form of a written report. This will in part, be researched and written in class time but it is expected there will be input into this at home as well.</p> <p>Internal Assessments:<br/>AS91881 Develop an electronics outcome<br/>AS91047 Develop a prototype<br/>US18239 Circuit concepts and measurement<br/>US18242 Make a simple printed circuit</p> <p>External Assessments:<br/>AS91050 Subsystems</p> <p><b>Course Cost: \$65</b></p> <p><b>Endorseable: Yes</b></p> <p><b>Internal Credits: 21</b></p> <p><b>External Credits: 4</b></p> <p><b>Level of Credits: 1 and 2</b></p> <p><b>Leads to:</b><br/><b>Year 12 Electronics and Mechatronics</b></p> | <p><b>Course Information:</b></p> <p>Year 12 Electronics and Control Tech is a course developed from the Digital Technology Curriculum.<br/>There are three main learning and assessment tasks. We look at basic electronic systems. Building simple circuits from schematics and how to select appropriate values for these components<br/>The main project will be a circuit designed by the student to fit the requirements of a brief and will involve assessment on prototyping including material component and process choices. Designing appropriate sensor and actuator subcircuits. Building and programming a microprocessor based electronic product.<br/>There is also an external assessment that will take the form of a written report. This will in part, be researched and written in class time but it is expected there will be input into this at home as well.</p> <p>Internal Assessments:<br/>AS9894 Make an advanced electronic outcome<br/>AS91357 Make and trial a prototype<br/>US18241 Basic electronic systems</p> <p>External Assessments:<br/>AS91363 Sustainability in design</p> <p><b>Course Cost: \$65</b></p> <p><b>Endorseable: Yes</b></p> <p><b>Internal Credits: 18</b></p> <p><b>External Credits: 4</b></p> <p><b>Level of Credits: 2</b></p> <p><b>Leads to:</b><br/><b>Year 13 Product Design or Mechatronics</b></p> |  |

# ENGINEERING

Mr Place - Room 77

| <b>Year 11<br/>Engineering [11TEM]</b>  | <b>Year 12<br/>Engineering [12TEM]</b>   | <b>Year 13<br/>Engineering [13TEM]</b>  |
|---|--|---|
| <b>Prerequisites:</b><br><br>Demonstrate safe work practices in Year 10.<br>Previous study of TMH is beneficial.  | <b>Prerequisites:</b><br><br>14 Credits in Year 11 Engineering or HOF approval.  | <b>Prerequisites:</b><br><br>12 Credits in Year 12 Engineering or HOF approval.   |
| <b>Course Information:</b><br><br>This course provides an introduction to mechanical engineering. It has been developed for secondary school students interested in mechanical engineering or wishing to pursue careers in maintenance and general engineering, marine and fabrication engineering or machining and tool making.<br><br>The course covers Health and Safety in the workshop, hand and machine tool use and welding. It is intended to provide students with a well-balanced, practically based course.<br><br>Internal Assessments Level 1:<br>US22923 Supervised machinery<br>US22926 Health and safety<br><br>Internal Assessments Level 2:<br>US32053 Perform machining operations<br><br><b>Course Cost: \$60</b><br><br><b>Endorseable: No</b><br><br><b>Internal Credits: 21</b><br><br><b>External Credits: 0</b><br><br><b>Level of Credits: 1 and 2</b><br><br><b>Leads to:</b><br><b>12 Engineering</b> | <b>Course Information:</b><br><br>Students in this class will undertake a course of study based in Mechanical Engineering Unit Standards. The course will involve welding, fabrication, machining and general engineering skills.<br><br>This course provides Sector Related credits towards the Manufacturing and Technology Vocational Pathway endorsement.<br><br>Students from this course will have the opportunity of being selected for the Gateway Industrial Training course.<br><br>Internal Assessments Level 2:<br>US32055 Fabrication<br><br>Internal Assessments Level 3:<br>US32054 Machining<br><br><b>Course Cost: \$70</b><br><br><b>Endorseable: No</b><br><br><b>Internal Credits: 14</b><br><br><b>External Credits: 0</b><br><br><b>Level of Credits: 2 and 3</b><br><br><b>Leads to:</b><br><b>13 Engineering - 13 Product Design</b> | <b>Course Information:</b><br><br>Students in this class will undertake a course of study based in engineering Unit Standards and Achievement Standards. The course will involve welding, fabrication, general engineering skills and CNC.<br><br>Students from this course will have the opportunity of being selected for the Gateway Industrial Training course.<br><br>Internal Assessments:<br>Selected from:<br>AS91620 Mechanical assembly<br>AS91622 CNC<br>US2436 CAD drawing - 3D<br><br><b>Course Cost: \$80</b><br><br><b>Endorseable: Optional</b><br><br><b>Internal Credits: 15</b><br><br><b>External Credits: 4 (with optional external)</b><br><br><b>Level of Credits: 3</b> |

# FASHION DESIGN

**Ms Ferguson - Room 70A**

[illegible]

# FOOD TECHNOLOGY

**Mr Bromfield or Ms Hayes - Room 70**

| <p style="text-align: center;"><b>Year 11</b><br/><b>Food Technology [11TFT]</b></p>  | <p style="text-align: center;"><b>Year 12</b><br/><b>Food Technology [12TFT]</b></p>  | <p style="text-align: center;"><b>Year 13</b><br/><b>Food Technology [13TFT]</b></p>   |
|---|---|--|
| <p><b>Prerequisites:</b></p> <p>None. Previous study at Year 10 is beneficial. Study of 11 General Science is also beneficial.</p>  | <p><b>Prerequisites:</b></p> <p>Minimum of 10 Credits in either 11TFT/11SCI. Successful study at 11HOS or with TIC Approval. Study of 12 General Science /Biology /Chemistry is beneficial for future study or career choice.</p>   | <p><b>Prerequisites:</b></p> <p>Year 12 Technology in Food or Hospitality and Level 2 Literacy. Prior TIC approval.</p>  |
| <p><b>Course Information:</b></p> <p>Food is a vital part of our daily lives and is essential for life. As our students become adults and have busy lives, it is easy to choose food which has already been prepared. This course aims to empower students to follow recipes and substitute ingredients and cooking methods as appropriate. Demonstrating an understanding of the science behind food commodities and the effect food has on maintaining good health. Students will also get the opportunity to trial and develop their own food product, develop an understanding that will allow students to become discriminating consumers of food products.</p> <p>Internal Assessments selected from:<br/>AS91059 Food handling issues<br/>AS90956 Demonstrate knowledge of nutrition<br/>AS91047 Prototype development<br/>AS91082 Implement basic procedures</p> <p>External Assessment:<br/>AS91049 How ingredients function</p> <p><b>Course Cost: \$170</b></p> <p><b>Endorseable: No</b></p> <p><b>Internal Credits: 15</b></p> <p><b>External Credits: 4</b></p> <p><b>Level of Credits: 1</b></p> <p><b>Leads to:</b><br/><b>12 Food Technology</b></p> | <p><b>Course Information:</b></p> <p>Students investigate the interesting and varied world of the Food Industry.</p> <p>Whilst gaining literacy credits and building a repertoire of practical skills – students will evaluate sustainable food related practices, before implementing advance procedures to create a specified product. The major unit of work for the year is to develop, test, trial and evaluate their own food product and ingredient suitability for today's consumer.</p> <p>Internal Assessments selected from:<br/>AS91302 Evaluate sustainable food related practices<br/>AS91351 Advanced procedures<br/>AS91357 Product development<br/>US20666 Food safety</p> <p>External Assessment:<br/>AS91359 Material evaluation</p> <p><b>Course Cost: \$170</b></p> <p><b>Endorseable: Yes</b></p> <p><b>Internal Credits: 17</b></p> <p><b>External Credits: 4</b></p> <p><b>Level of Credits: 2</b></p> <p><b>Leads to:</b><br/><b>13 Food Technology</b><br/><b>13 Product Design</b></p> | <p><b>Course Information:</b></p> <p>At first, the budding food technologists will perform complex procedures to create a specified product. Secondly, they will embark on their major project. Through research, brief development and functional modelling the students will aim to develop their own prototype of a food product for potential consumers – whilst seeking feedback from industry experts.</p> <p>Internal Assessments selected from:<br/>AS91643 Implement complex procedures<br/>AS91608 Brief development<br/>AS91611 Develop a prototype</p> <p>External Assessments:<br/>AS91612 Understanding of technological modelling</p> <p><b>Course Cost: \$170</b></p> <p><b>Endorseable: Yes</b></p> <p><b>Internal Credits: 16</b></p> <p><b>External Credits: 4</b></p> <p><b>Level of Credits: 3</b></p> <p><b>University Entrance Approved</b><br/><b>Examinable for Scholarship</b></p> |

| <h1 style="text-align: center;">HOSPITALITY</h1> <h2 style="text-align: center;">Mr Bromfield or Ms Hayes – Room 78</h2>   |  |  |
|--|--|--|
| <b>Year 11</b><br><b>Hospitality [11HOS]</b>   | <b>Year 12</b><br><b>Hospitality [12HOS]</b>   | <b>Year 13</b><br><b>Hospitality [13HOS]</b>   |
| <b>Prerequisites:</b><br><br>Good levels of written English are required as this course has practical and theory components. A responsible attitude and a safe work ethic are essential.   | <b>Prerequisites:</b><br><br>Priority will be given to students who have studied Year 11 HOS and Year 11 TFT or with approval of the TIC.  | <b>Prerequisites:</b><br><br>Completed L2 HOS and/or L2 TFT or have relevant industry experience (work experience/part time job etc). Students must have US167 or US20666.   |
| <b>Course Information:</b><br><br>This is an industry focused course where students can build a career in Hospitality.<br><br>It aims to provide students with skills in cookery.<br><br>Upon successful completion of the course, students will be awarded two Certificates of Achievement in Hospitality. Students also gain credits which count towards NCEA Level 1 and can count credits towards the National Certificate in Hospitality (Foundation skills) (Level 1).<br><br>Internal Assessments selected from:<br>US15900 Meat<br>US15901 Fruit and vegetables<br>US19770 Egg and cheese<br>US15921 Cake, sponges and scones<br>US15920 Sauce and soup<br>US15919 Hot finger food<br>US20159 Knife care<br>US21058 Career pathways<br><br><b>Course Cost: \$170</b> | <b>Course Information:</b><br><br>A career in Hospitality can take you as far as you want to go, across the country or around the world. The skills you learn in this course can be used in any kitchen.<br><br>Upon successful completion of the course, students will be awarded two Certificates of Achievement in Hospitality.<br><br>Students also gain credits which count towards NCEA Level 2 and can count credits towards the National Certificate in Hospitality (Introductory Cookery) (Level 2).<br><br>Internal Assessments selected from:<br>US167 Food safety methods<br>US13285 Handle knives<br>US13276 Cook by grilling<br>US13283 Salads<br>US13281 Sandwiches<br>US13271 Frying<br>US22234 International dishes<br>US13278 Roasting<br>US13280 Fruit and vegetables<br>US1272 Cook by baking<br><br><b>Course Cost: \$170</b> | <b>Course Information:</b><br><br>This course is assessed using industry based Unit Standards in a realistic commercial environment. Students will be expected to participate in catering activities which sometimes requires them to work through interval, lunchtime, before and after school to gain work experience and some practical assessment credits.<br><br>There will be one compulsory two hour practical cookery lesson each week, which will be either during lunchtime, study period or after school.<br><br>Internal Assessments selected from:<br>US13331 Pickles, chutney's and preserves<br>US17284 Coffee origin<br>US17288 Espresso coffee<br>US13282 Complex sandwiches<br>US18497 Culinary products and terms<br>US13316 Basic pasta dishes<br>US13343 Nutrition in catering<br><br><b>Course Cost: \$170</b> |
| <p><i>If fees are unpaid or no arrangements for payment made by the end of Term One, students will need to provide all their own food for weekly practical assessments.</i></p> <p><i>Students with special dietary requirements must provide their own food and course costs will be adjusted accordingly</i></p>   |  |  |
| <b>Endorseable: No</b><br><br><b>Internal Credits: 20+</b><br><br><b>Level of Credits: 1</b><br><br><b>Leads to:</b><br><b>12 Hospitality</b>  | <b>Endorseable: No</b><br><br><b>Internal Credits: 20+</b><br><br><b>Level of Credits: 2</b><br><br><b>Leads to:</b><br><b>13 Hospitality</b>  | <b>Endorseable: No</b><br><br><b>Internal Credits: 20+</b><br><br><b>Level of Credits: 3</b><br><br><b>Leads to:</b><br><b>Culinary Arts</b>   |



# GRAPHICS / DVC

Mr Dodds - Room 75

| Year 11<br>Graphics [11GDS]  | Year 12<br>Graphics [12GDS]  | Year 13<br>Graphics [13GDS]   |
|--|--|---|
| <b>Prerequisites:</b><br><br>Not Applicable. Preferable to have completed Year 10 Graphics.  | <b>Prerequisites:</b><br><br>12 Credits at Year 11 Graphics or by TIC Permission.  | <b>Prerequisites:</b><br><br>12 Credits at Year 12 Graphics or by TIC Permission.   |
| <b>Course Information:</b><br><br>In this course students will be given a range of design problems to solve. Each of the problems will challenge student's design thinking whilst helping them to develop their visual communication skills. Design problems range from packaging to architecture design.<br><br>Visual communication skills covered in Year 11 are: <ul style="list-style-type: none"> <li>• Freehand drawing</li> <li>• Instrumental drawing</li> <li>• Modelling</li> <li>• Rendering/shading</li> <li>• Computer aided design (CAD)</li> </ul> This course covers knowledge and skills from a wide range of design contexts and supports other technology subjects such as Product Design, Building and Engineering. (Note: there are no exams in this subject.)<br><br>Internal Assessments:<br>AS91066 Rendering techniques<br>AS91068 Develop design ideas<br><br>External Assessments:<br>AS91063 Produce freehand sketches<br>AS91064 Instrumental drawings<br>AS91065 Paraline drawings<br><br><b>Endorseable: Yes</b><br><br><b>Internal Credits: 9</b><br><br><b>External Credits: 9</b><br><br><b>Level of Credits: 1</b><br><br><b>Leads to:</b><br><b>12 Graphics</b> | <b>Course Information:</b><br><br>In this course students focus on solving one design problem for the whole of the first semester. The design problem could be either architectural or a product design.<br><br>Students build on the techniques and knowledge learnt in Year 11 to produce a portfolio of work that demonstrates their design thinking as well as their visual communication skills.<br><br>In semester two, students focus their attention on the external standards. (Note: there are no exams in this subject.)<br><br>Internal Assessments:<br>AS91341 Develop a spatial design<br>OR<br>AS91342 Develop a product design<br><br>External Assessments:<br>AS91337 Visual communication<br>AS91338 Produce working drawings<br>AS91339 Instrumental perspective<br>AS91627 Initiate design ideas (Level 3)<br><br><b>Endorseable: Yes</b><br><br><b>Internal Credits: 6</b><br><br><b>External Credits: 14</b><br><br><b>Level of Credits: 2 and 3</b><br><br><b>Leads to:</b><br><b>13 Graphics</b> | <b>Course Information:</b><br><br>In this course students focus on solving one design problem for the whole of the first semester. The design problem could be either architectural or a product design.<br><br>Graphics/DVC at this level requires students to demonstrate a higher depth of thinking, research and visual communication than in previous years.<br><br>In semester two students focus on completing their external standards. (Note: there are no exams in this subject.). Once the external standards are complete students are invited to design an exhibit to show off the design solution they developed in semester 1.<br><br>Internal Assessments:<br>AS91628 Exhibit a design outcome<br>OR<br>AS91629 Resolve a spatial design<br>OR<br>AS91630 Resolve a product design<br><br>External Assessments:<br>AS91627 Initiate design ideas<br>AS91631 Produce working drawings<br><br><b>Endorseable: Yes</b><br><br><b>Internal Credits: 12</b><br><br><b>External Credits: 10</b><br><br><b>Level of Credits: 3</b><br><br><b>University Entrance Approved</b><br><b>Examinable for Scholarship</b> |

# PRODUCT DESIGN

Mr Place - Room 75

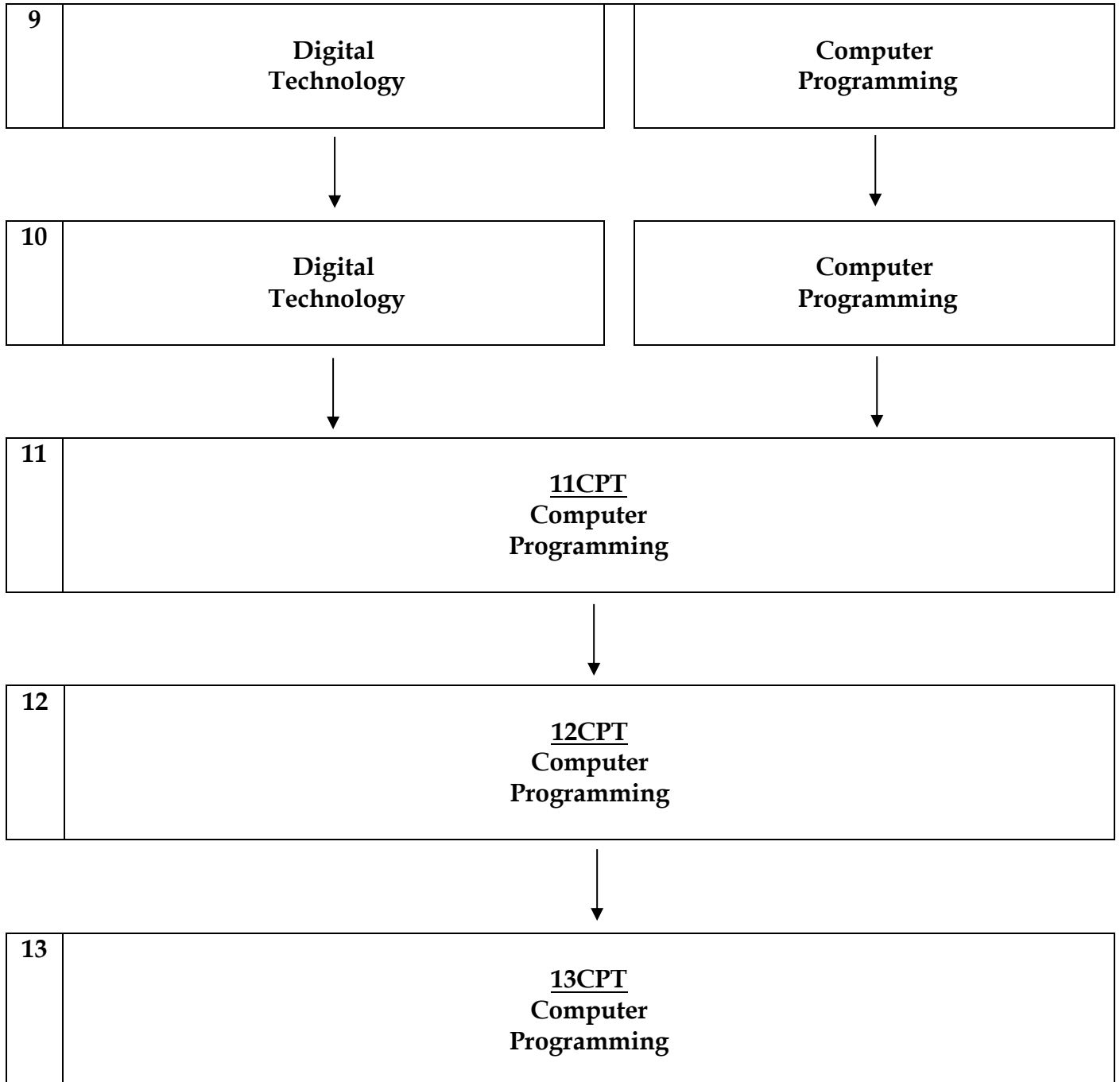
| <b>Year 11</b><br><b>Product Design [11TPD]</b>   | <b>Year 12</b><br><b>Product Design [12TPD]</b>  | <b>Year 13</b><br><b>Product Design [13TPD]</b>   |
|---|--|---|
| <b>Prerequisites:</b><br><br>Achieved well in TMH in Year 10 or HOF approval  | <b>Prerequisites:</b><br><br>Year 11 Technology or HOF approval.   | <b>Prerequisites:</b><br><br>Year 12 Technology in Fashion, Food, Wood, Metal or Graphics.  |
| <b>Course Information:</b><br><br>Product design is the process of designing a product to solve a problem.<br><br>Students will be expected to combine design, science and technology to develop a product that will solve a chosen problem.<br><br>To do this, students will follow the technological process. The process focuses on figuring out what is required, brainstorming possible solutions, creating and evaluating models and then generating a final idea.<br><br>To achieve in this subject, you must: be an independent worker, having good drawing skills is a bonus, be a problem solver, be very organised and be hard working.<br><br>Internal Assessments:<br>AS91057 Basic procedures to make a product<br>AS91046 Conceptual design<br>AS91047 Prototyping<br><br>External Assessments:<br>AS91048 Technological modelling<br><br><b>Course Cost: \$30</b><br><br><b>Endorseable: Yes</b><br><br><b>Internal Credits: 18</b><br><br><b>External Credits: 4</b><br><br><b>Level of Credits: 1</b><br><br><b>Leads to:</b><br><b>12 Product Design</b> | <b>Course Information:</b><br><br>Product design is the process of designing a product to solve a problem. This course continues to build on the skills learnt at Level 1.<br><br>Students will be expected to combine design, science and technology to develop a product that will solve a chosen problem.<br><br>To do this, students will follow the technological process. The process focuses on figuring out what is required, brainstorming possible solutions, creating and evaluating models and then generating a final idea.<br><br>To achieve in this subject, you must: be an independent worker, having good drawing skills is a bonus, be a problem solver, be very organised and be hard working.<br><br>Internal Assessments:<br>AS913440 Advanced procedures to make a product<br>AS913560 Conceptual design<br>AS913570 Prototyping<br><br>External Assessments:<br>AS913580 Technological modelling<br><br><b>Course Cost: \$30</b><br><br><b>Endorseable: Yes</b><br><br><b>Internal Credits: 18</b><br><br><b>External Credits: 4</b><br><br><b>Level of Credits: 2</b><br><br><b>Leads to:</b><br><b>13 Product Design</b> | <b>Course Information:</b><br><br>A challenging multidisciplinary course. If you have an interest in a specific technological area and able to work independently this course would be suitable for you.<br><br>You are able to choose the area of technology you will work within but it is suggested that it be an area of previous study or strength. You need to speak to Technology teachers with regards to choosing this subject prior to entry to the course.<br><br>Internal Assessments:<br>AS91608 Brief development<br>AS91610 Conceptual design<br>AS91611 Develop a prototype<br>AS91623 Complex procedures<br><br>External Assessments:<br>AS91612 Understanding of modelling in technology<br><br><b>Course Cost: Dependent on project cost</b><br><br><b>Endorseable: Yes</b><br><br><b>Internal Credits: 20</b><br><br><b>External Credits: 4</b><br><br><b>Level of Credits: 3</b><br><br><b>University Entrance Approved</b><br><b>Examinable for Scholarship</b> |

# MECHATRONICS

**Mr Place - Room 74/75**

|  | Year 12<br>Mechatronics [12TMT]   | Year 13<br>Mechatronics [13TMT]  |
|--|---|--|
|  | <b>Prerequisites:</b><br><br>By application. Students must be taking Mathematics and Physics.   | <b>Prerequisites:</b><br><br>12TMT preferred but not essential. By application. Students should also be taking Calculus/Statistics and Physics.  |
|  | <b>Course Information:</b><br><br><p>Mechatronics unites the principles of engineering disciplines, including mechanical, electronics, programming and design skills. This is a collaborative class in which the students will design, build and programme their robot. The course provides Sector Related credits towards the Manufacturing and Technology Vocational Pathway endorsement.</p> <p>Mechatronics is an Academy class (see page 6 <b>AWVA Academies</b>) and as such will run from 2.00pm – 6.00pm on a Wednesday afternoon. As an Academy we must provide a tertiary component. We have developed a strong working partnership with the Engineering faculty at AUT, this allows our students to enrol in one of their papers. This will run in Term 3.</p> <p>Internal Assessments:<br/>Selected from:<br/>AS91355 Project management<br/>AS92348 Understanding frameworks<br/>AS91357 Prototyping<br/>AS91344 Mechanical construction<br/>AS91375 Advanced interfacing<br/>AS91373 Programming</p> <p>External Assessments (selection from):<br/>AS91338 Working drawings<br/>AS91360 Demonstrate understanding of redundancy and reliability</p> <p><b>Course Cost: \$0</b></p> <p><b>Endorseable: Yes</b></p> <p><b>Internal Credits: 18</b></p> <p><b>External Credits: 4</b></p> <p><b>Level of Credits: 2</b></p> <p><b>Leads to:</b><br/><b>13 Mechatronics</b></p> | <b>Course Information:</b><br><br><p>The focus of the Level 3 mechatronics course is to prepare students for engineering at a tertiary level through project based, contextualised learning across the multiple areas of Technology, Mathematics, Physics and English.</p> <p>Students will compete in the Evolocity electric vehicle competition.</p> <p>Internal Assessments:<br/>AS91609 Project Management<br/>AS91611 Prototyping<br/>AS91620 Mechanical assembly</p> <p>External Assessments:<br/>To be confirmed from the Technology Curricular.</p> <p><b>Course Cost: \$0</b></p> <p><b>Endorseable: Yes</b></p> <p><b>Internal Credits: TBC</b></p> <p><b>External Credits: TBC</b></p> <p><b>Level of Credits: 3</b></p> <p><b>University Entrance Approved</b><br/><b>Examinable for Scholarship</b></p> |

# DIGITAL TECHNOLOGY COURSE PATHWAYS



# DIGITAL TECHNOLOGIES

## Computer Programming

[illegible]

# EARLY CHILDHOOD EDUCATION

Miss Simpson - Room P3

|  | <b>Year 12</b><br><b>Early Childhood [12ECE]</b>  | <b>Year 13</b><br><b>Early Childhood [13ECE]</b>   |
|--|---|--|
|  | <b>Prerequisites:</b><br><br>Good levels of written English and an interest in Early Childhood Education.   | <b>Prerequisites:</b><br><br>An interest in Early Childhood Education. In consultation with the Teacher in Charge. Year 12ECE an advantage.<br><i>Students must be able to work at Level Three and have a good level of written English.</i>   |
|  | <b>Course Information:</b><br><br>Assessments in this course are provided through Plunket.<br><br>Early Childhood Education is an excellent vehicle for learning many life skills. Students learn about themselves, relationships with others, develop their view of children, develop listening, communication and relationship skills. Early Childhood Education helps students to form connections with communities outside of school. Upon successful completion of this course, students will be able to count credits towards NCEA Level 2.<br><br>Any course costs incurred will be advised and a voluntary contribution will be asked for.<br><br>Internal Assessments:<br>US29852 Basic needs and nutrition<br>US29853 Child health and wellbeing<br>US29854 Hygiene and safety<br>US29857 Learning and development<br>US29858 Play experiences<br>US29861 Support services<br><br><b>Field Trip Costs:</b><br><br><b>Course Cost:</b><br><br><b>Endorseable: No</b><br><br><b>Internal Credits: 19</b><br><br><b>External Credits: 0</b><br><br><b>Level of Credits: 2</b><br><br><b>Leads to: 13 Early Childhood Education</b> | <b>Course Information:</b><br><br>Assessments in this course are provided through Plunket.<br><br>Upon successful completion of this course, students will be able to count credits towards NCEA Level 3.<br><br>This course is ideal for anyone who is interested in ECE as a career, teaching or anything to do with children.<br><br>Any course costs incurred will be advised and a voluntary contribution will be asked for.<br><br>Internal Assessments:<br>US10019 Safety<br>US10026 Learning and development<br>US29856 Care practices<br>US29865 Health and wellbeing<br>US29868 Professional behaviour and wellbeing<br><br><b>Field Trip Costs:</b><br><br><b>Course Cost:</b><br><br><b>Endorseable: No</b><br><br><b>Internal Credits: 19</b><br><br><b>External Credits: 0</b><br><br><b>Level of Credits: 3</b> |

# GATEWAY

## Ms Farrar - Administration

### Year 12 / 13 Gateway [12GTW]

#### **Prerequisites:**

NCEA Level 1 Achieved.

Students need to be work ready – responsible, reliable, show initiative, able to organise own transport to and from work placement, clear idea of the industry they are interested in exploring, able to work independently, excellent time management skills and have an excellent attendance record.

#### **Course Information:**

This is a programme for students who are mature and “work ready” who want to experience a realistic work placement or investigate their prospective career of choice.

Students will gain work skills relevant to their industry choice together with industry-based credits. Students will have Gateway class time to complete work missed from their other timetabled classes, whilst they are out on their work placement.

Placements offered include: Building, Electrical, Plumbing, Hair-dressing, Early Childhood Education, Animal Care, Banking, Retail (The Warehouse), Hospitality (McDonalds), Automotive and others on request.

**Field Trip Costs: Transport costs getting to and from work placement – Varies for each student**

**Endorseable: No**

**Internal Credits: Varies**

**Industry Credits: Varies depending on industry choice**

**Level of Credits: Mostly Level 2 but some Industry Based Credits are at Level 3.**

# POLICE AND UNIFORMED SERVICES PREP COURSE

Mr Mataia – Physical Education Office / Sports Hall

|  |   |  |
|--|---|--|
|  | <p style="text-align: center;"><b>Year 13</b><br/><b>Police and Uniformed Services Prep Course [13USP]</b></p> <hr/> <p><b>Prerequisites:</b></p> <p>NCEA Level 1 with a minimum of 10 credits each for Mathematics and English.</p> <p>Approval from the selection panel.</p> <p>Students need to be reliable, responsible and have a proven history of having good character. A driver's licence is an advantage but not essential and a strong desire to serve their community in various capacities is a must.</p> <hr/> <p><b>Course Information:</b></p> <p>This is a course primarily designed for students who wish to join either the New Zealand Police or a uniformed service of some description. It is a course where the content is directly linked to the Police and uniformed services, so students who take this course will gain the skill set to succeed in entering into the aforementioned vocations. Some core values in these services that students must adhere to include:</p> <p>Professionalism, respect, integrity, commitment to Maori and the Treaty, empathy and valuing diversity. This course is closely linked with Unitec and the New Zealand Police, so therefore has significant mana in the wider community.</p> <p>Internal Assessments:<br/> US1296 Interview in informal situations<br/> US1297 Conduct an interview in a formal situation<br/> US4251 Plan a career pathway<br/> US9681 Contribute within a team or group which has an objective<br/> US11907 Listen actively to gain information in an active setting<br/> US91501 Demonstrate quality performance of a physical activity in an applied setting</p> <hr/> <p><b>Endorseable: No</b></p> <p><b>Internal Credits: 21</b></p> <p><b>External Credits: 0</b></p> <p><b>Level of Credits: 3 and 4</b></p> |  |
|--|---|--|



# SKILL PATHWAYS

Mr Jefferies – Room C4

| Year 11<br>Skill Pathways [11SKP]   | Year 12<br>Skill Pathways [12SKP]   | Year 13<br>Skill Pathways [13SKP]   |
|---|---|---|
| <b>Prerequisites:</b><br><br>None.<br>Course intended for students on the Workplace or vocational training pathway  | <b>Prerequisites:</b><br><br>None.<br>Course intended for students on the Workplace or vocational training pathway  | <b>Prerequisites:</b><br><br>None.<br>Course intended for students on the Workplace or vocational training pathway  |
| <b>Course Information:</b><br><br>This course is designed to provide support for students who may experience difficulty with academic subjects at NCEA level.<br><br>The emphasis is on cooperation rather than competition, on negotiation between students and tutors, and on rewarding achievement.<br><br>The course is based around the key competencies of the national curriculum and enables students to have an increased sense of ownership and control of their own learning to raise levels of motivation, achievement and self-esteem.<br><br>Students manage themselves, set targets, solve problems and work with others. Students also gain skills and qualifications to prepare for employment.<br><br>Selected Year 12 and 13 students have the opportunity to attend a First Aid Programme – an external provider comes in and runs a two day programme at Rutherford College. Selected students also are able to sit a Health and Safety Course (school based), and work site safe (passport construction). |   |   |
| Internal Assessments:<br>US497 Health and safety<br>US504 Produce a CV<br>US526 Community services<br>US1978 Employment rights<br>US3503 Group work<br>US24709 Individual budget<br>US28088 Credit and debt<br><br><b>Endorseable: No</b><br><br><b>Internal Credits: 20</b><br><br><b>External Credits: 0</b><br><br><b>Level of Credits: 1</b><br><br><b>Leads to:</b><br>12 Skill Pathways or vocational training  | Internal Assessments:<br>US6400/6401/6402 First Aid<br>US7117 Plan and learning styles<br>US7118 Manage own learning<br>US7121 Search and access skills<br>US9677 Participate in a group<br>US10781 Future directions<br>US12352 Lineage, heritage & culture<br>US12354 Legal implications of renting<br>US12383 Explore career options<br>US28093 Tertiary study funding options<br><br><b>Endorseable: No</b><br><br><b>Internal Credits: 20+</b><br><br><b>External Credits: 0</b><br><br><b>Level of Credits: 1 &amp; 2</b><br><br><b>Leads to:</b><br>13 Skill Pathways / Workplace or vocational training | Internal Assessments:<br>US4251 Career pathway<br>US28099 Analyse credit options<br>US28100 Long term personal financial goal(s)<br>US28104 External factors in personal finance<br><br><b>Endorseable: No</b><br><br><b>Internal Credits: 20+</b><br><br><b>External Credits: 0</b><br><br><b>Level of Credits: 1, 2 and 3</b><br><br><b>Leads to:</b><br>The workplace or vocational training |

# VOCATIONAL ACADEMIES

Mrs McCarthy – Careers Department

**The key differences between an academy and the traditional school subjects are:**

1. Academy students may be taught collaboratively by both Secondary and Tertiary teachers.
2. Some time may be spent at school (including the other schools mentioned) and a tertiary campus.
3. Academies may have a work experience component integrated into the program.
4. There are a number of different academy timetables ranging from full time within the school day to also running outside of normal school hours, for example 2-6pm.
5. Students may attend an academy that is run by another school.
6. Students can choose any of the academies online in the Student Portal, as with other subjects, but will be required to have **an interview** to confirm placement in chosen academies.

**The shared academies for 2023 are:**

**Automotive Levels 2 and 3**  
**Health Pathways Levels 2 and 3**  
**Mechatronics Levels 2 and 3**  
**Mahi-a-Toi Levels 1, 2 and 3**

**Academies to be administered by Rutherford College:**

Automotive Level 3 – see page 75  
Mechatronics Level 2 and 3 – see page 67  
Mahi-a-Toi Level 1, 2 and 3 – see page 56

**Academy administered by Waitakere College:**

Automotive Level 2 – see page 75

**Academies administered by Pathways West:**

Health Pathways Levels 2 and 3 – see page 76

# AUTOMOTIVE ACADEMY

|  |   |  |
|--|---|--|
|  | <p style="text-align: center;"><b>Level 2 Automotive Academy</b><br/><b>[12AAA]</b><br/>Waitakere College – Tuesdays<br/>2.00pm – 6.00pm<br/>Unitec – Fridays 8.30am – 3.00pm</p>   | <p style="text-align: center;"><b>Level 3 Automotive Academy</b><br/><b>[13AAA]</b><br/>Unitec – 1 Day per week<br/>8.30am – 3.00pm</p>  |
|  | <p><b>Prerequisites:</b></p> <p>By application. Students need excellent time management skills and a genuine interest in automotive mechanics. Students are required to complete an application and interview process to be considered for the Level 2 Automotive Academy.</p>  | <p><b>Prerequisites:</b></p> <p>By application. Students need excellent time management skills and a genuine interest in automotive mechanics. Completion of Level 2 Automotive is an advantage. Students are required to complete an application and interview process to be considered for the Level 3 Automotive Academy.</p>   |
|  | <p><b>Course Information:</b></p> <p>Level 2 Automotive is an Academy class.</p> <p>Students are required to attend Automotive classes at Waitakere College one afternoon per week (2:00pm – 6:00pm) for Terms 1, 2 &amp; 3.</p> <p>As Level 2 Automotive is an Academy class we must provide a tertiary component for the course. We have developed a strong working partnership with UNITEC, Mt Albert, this allows our students to enrol in their Level 2 Automotive Academy. Students will be required to attend UNITEC Automotive classes every Friday (8:30am – 3:00pm) during Terms 1, 2 &amp; 3.</p> <p>Automotive Course includes theory and workshop practical work. Students will also be given the opportunity to gain their Site Safe qualification and their Health &amp; Safety Certificate as part of their Level 2 Automotive Academy course.</p> <p>Personal Protection Equipment – overalls, safety workboots, safety glasses and earmuffs will be provided for workshop work.</p> <p>Transport – transport will be provided to transport students to their classes at Waitakere College each week and to and from UNITEC each Friday.</p> | <p><b>Course Information:</b></p> <p>Level 3 Automotive is an Academy class.</p> <p>As Level 3 Automotive is an Academy class we must provide a tertiary component for the course. We have developed a strong working partnership with UNITEC, Mt Albert, this allows our students to enrol in their Level 3 Automotive Academy. Students will be required to attend UNITEC Automotive classes 1 day per week (8:30am – 3:00pm) during Terms 1 &amp; 2.</p> <p>Automotive Course includes theory and workshop practical work. Students will also be given the opportunity to gain their Site Safe qualification and their Health &amp; Safety Certificate as part of their Level 3 Automotive Academy course.</p> <p>Personal Protection Equipment – overalls, safety workboots, safety glasses and earmuffs will be provided for workshop work.</p> <p>Transport – transport will be provided for students to their classes to and from UNITEC each week.</p> |

# HEALTH PATHWAYS

|  | <b>Level 2 Health Pathways [12AHA]</b><br>Unitec – 1 Day per week<br>8.30am – 3.00pm  | <b>Level 3 Health Pathways [13AHA]</b><br>Unitec – 1 Day per week<br>8.30am – 3.00pm   |
|--|---|--|
|  | <b>Prerequisites:</b><br><br>By application. Students need excellent time management skills and a genuine interest in further study/career in the Health Industry. Students should also be taking Level 2 Biology as one of their NCEA subjects at school. Students are required to complete an application and interview process to be considered for the Level 2 Health Pathways class.   | <b>Prerequisites:</b><br><br>By application. Students need excellent time management skills and a genuine interest in further study/career in the Health Industry. Students should also be taking Level 2 or Level 3 Biology as one of their NCEA subjects at school. Completion of Level 2 Health Pathways is an advantage. Students are required to complete an application and interview process to be considered for the Level 3 Health Pathways class.  |
|  | <b>Course Information:</b><br><br>Level 2 Health Pathways students are required to attend Level 2 Health Pathways classes at UNITEC 1 day per week for Terms 1, 2 & 3. We have developed a strong working partnership with UNITEC and this allows our students to enrol in their Level 2 Health Pathways classes at their Henderson Campus.<br><br>Students will be given the opportunity to gain their First Aid Certificate as part of their Level 2 Health Pathways course.<br><br>Students are required to get themselves to and from their classes at UNITEC's Henderson Campus each week. | <b>Course Information:</b><br><br>Level 3 Health Pathways students are required to attend Level 3 Health Pathways classes at UNITEC 1 day per week (8:30am – 3:00pm) for Terms 1, 2 & 3. We have developed a strong working partnership with UNITEC and this allows our students to enrol in their Level 3 Health Pathways classes at their Mt Albert Campus.<br><br>Students will be given the opportunity to gain their First Aid Certificate as part of their Level 3 Health Pathways course.<br><br>Transport will be provided for students to get to and from their UNITEC classes each week. |