

RUTHERFORD COLLEGE

Senior Courses 2024



CONTENTS PAGE

Page	
3	How to choose your subjects
4	Subject Choice Guidelines
5	Qualifications
6	Vocational Pathways Awards
7 - 8	University Entrance
9 - 11	Year 11 - 13 Information
12 - 13	Course Progressions
14 - 21	The Arts
22 - 26	English, ESOL and Media Studies
27 - 31	Health and Physical Education
32 - 35	Languages
36 - 39	Mathematics
40 - 45	Science
46 - 52	Social Sciences
53 - 56	Te Ao Maori
57 - 68	Technology
69	Early Childhood Development
70	Gateway
71	Police and Uniformed Services Prep Course
72	Skills Pathway
73 - 75	Vocational Academies

THE TIMELINE FOR CHOOSING

Key Date	What is happening	What I have to do
Week 4: 7-11 August	Options week Exploring Options and Careers	Work with your Tutor teacher looking at possible subjects - using the online Senior Option Handbook and online Course Selection in the Schoolbridge KAMAR Student Portal
THURSDAY 10 AUGUST 2.00 - 8.00pm	Interviews at school for students and their Caregivers to discuss report and 2024 Options Careers Expo in Hall	Students and Caregivers to attend 2.00 - 8.00 pm
THURSDAY 17 AUGUST	Online Course Selection in the KAMAR Student Portal will be closed to all students at 3pm.	Finalise your courses for 2024. You will be able to change choices online up until this date.

HOW TO CHOOSE YOUR SUBJECTS

	What do I need to do?	I have done this ✓ and Date	Tutor Teacher Check ✓
Step 1	What subjects do you enjoy studying? Think of the subjects you achieve well in.		
Step 2	Ask your subject teachers: Do they recommend you continue with the subject? Are you on track to meet the pre-requisites or entry requirements?		
Step 3	Discuss your choices with your Parents/Caregivers. Please take note of the costs involved. <i>See Mrs Gibson, Mrs McGough in Careers if you need help.</i>		
Step 4	Check: Do your choices fit in with possible subjects in the years to come? <i>Check the course progression page on pages 12 – 13. Some subjects require you to have studied the subject previously or the year before</i>		
Step 5	Check: Do your subject choices expand or narrow possible career choices for you?		
Step 6	Check: If you are planning to go to Tertiary, do your subject choices ensure you are eligible to apply for the course you might like to study?		
Step 7	Check: Have you made the right choices for yourself? <i>Remember you can talk your choices over with the Careers team, Parents/Caregivers, Tutor teachers, Teachers, Heads of Department, Deans, Guidance Counsellors. Attend Option Evening THURSDAY 10 AUGUST.</i>		
Step 8	Choose the subjects you want to do next year in the KAMAR Student Portal Course Selection.		

SUBJECT CHOICE GUIDELINES

These are recommendations only and not necessarily prerequisites.
See Careers staff if you need further advice.

Career	Background Subjects
Administration	English, Mathematics, Computer skills
Architecture	A broad range of subjects recommended. Mathematics, Physics are useful. Art or Design or Graphics are recommended as a portfolio of art work is required.
Apprenticeships - Trades	NCEA Level 2 Mathematics and English - check for further individual trade requirements
Armed Forces	Officers: University Entrance needed Combat, Apprenticeships: NCEA Level 2 Mathematics, English
Art / Design	At least 2 Creative subjects as a portfolio of Art work is required
Aviation	English, Calculus, Physics
Building / Construction	English, Mathematics, Building
Business/ Commerce	A broad base of subjects is recommended. Mathematics, English, Accounting, Economics are an advantage
Computing/ IT	Mathematics, Computer programming
Dentistry	Mathematics, Chemistry, Physics, Biology and 1 language rich subject or humanities subject - History, Geography, Classics, English, Te Reo Māori.
Engineering	Calculus, Physics are required for Degree level study. Mathematics, English, Engineering recommended for all other specialist study / jobs chosen
Environmental Science	English, Mathematics, Biology, Geography
Food Science/ Technology	Mathematics, Chemistry, Physics, Biology and 1 Humanities subject - History, Classics, Geography
Health Science - Biomedical Science - Health Science	Biology, Chemistry, Physics, Calculus and 1 language rich subject or humanities subject - History, Geography, Classics, English, Te Reo Māori.
Entry into Doctor, Medicine, Pharmacy	See Careers staff for more specific requirements and other Health Science courses
Hospitality	English, Mathematics, Food Technology, Hospitality, Gateway are useful
Journalism / Communications	A broad range of subjects is recommended. English, Te Reo Māori, Humanities, Media Studies
Law	A broad base of subjects is recommended. History and Classics are useful.
Music	Music. Audition and or Portfolio of Musical experience required
Nursing	English, Mathematics, Biology. Chemistry is also useful
Performing / Screen Arts	Subject in the chosen specialisation. An audition will be required
Police	English, Te Reo Māori, Mathematics, full drivers Licence, life experience
Psychology	English, Mathematics, Chemistry, Classics or History is useful
Sport / Fitness	English, Physical Education, Outdoor Education, Chemistry, Biology
Teaching	A broad range of subjects is recommended.
Tourism	A broad range of subjects is recommended, Travel & Tourism, languages
Veterinarian / Vet Assistant	English, Mathematics, Biology, Chemistry, Physics

QUALIFICATIONS

Certificate/Qualification	Credits required	Compulsory
National Certificate in Educational Achievement NCEA - Level 1	80 from Level 1 or above	10 in Numeracy 10 in Literacy
National Certificate in Educational Achievement NCEA - Level 2	60 from Level 2 and 20 from Level 1	60 at Level 2 or higher
National Certificate in Educational Achievement NCEA - Level 3	60 from Level 3 and 20 from Level 2	60 at Level 3 or higher
University Entrance	<ul style="list-style-type: none"> • NCEA Level 3 • 14 from one Approved subject • 14 from second Approved subject • 14 from a third Approved subject • 10 Level 1 or higher Numeracy credits • 5 credits Level 2 or higher Reading credits • 5 credits Level 2 or higher Writing credits 	
Scholarship Examinations	Separate Scholarship examination with monetary prizes. Details available Year 13 Dean. Available for the TOP academic students only.	
Entrance to Polytechnics	Diploma courses require Level 2 or 3. All Degree courses require Level 3, UE and more.	
Course Endorsement all Levels <i>i.e. for possible each of the 5/6 courses you take</i>	Requires 14 credits (from any one subject) to be achieved at the higher Level of M or E. Of the 14, at least 3 must be from internal and at least 3 from external assessments.	
Certificate Endorsement all Levels <i>i.e. for your overall performance at Level 1,2,3</i>	At least 50 credits (from any standards from any subject) to be achieved at the higher levels of M or E.	
Other National Certificates and Awards Level 2		
National Certificate in Building, Construction and Allied Trades Skills National Certificate in Engineering Vocational Pathways Awards	Refer to the appropriate HOFs/TICs for details. Refer to next page	

UNIVERSITY ENTRANCE LITERACY

UE Literacy can be achieved in a wide range of subjects. For this reason, we have identified UE Literacy credits in the following way:

* R = Reading credits

* W = Writing credits

* R/W = Reading and Writing credits

WHAT ARE VOCATIONAL PATHWAYS?

The Vocational Pathways provide ways to achieve NCEA Level 2. These pathways will let you see how learning and achievement will be valued in the workplace. They will also suggest the types of study options and job opportunities available to learners.

Employers will be able to see learner strengths, abilities, interests and achievements when they look at the Vocational Pathways information.

Vocational Pathways Profile: The Vocational Pathways Profile is a visual graph that shows learners' achievement against the Vocational Pathways. A learner will be able to see their progress and identify where they need to raise their level of achievement. This will help learners when planning their courses for the following year. Learners will be able to check that their course selections provide the pathways they need to achieve their goals. Learners can see their Vocational Pathways Profile whenever they use their learner login

Vocational Pathways Awards:

To achieve the Vocational Pathways Award, a learner must:

- Achieve NCEA Level 2 which includes literacy (10 credits) and numeracy (10 credits) at Level 1 or above, and
- Achieve 60 x Level 2 credits from the Recommended Assessment Standards for a Vocational Pathways, including 20 x Level 2 credits from Sector-Related standards for the same sector. **Credits from the Recommended Assessment Standards and Sector-Related Standards must come from the same Vocational Pathways e.g Service Industries**

A learner can achieve more than one Vocational Pathways Award if they complete more than one Vocational Pathway.

A learner can see any Vocational Pathways Award they have achieved through the learner login. Achievement is recorded on the learners' Record of Achievement.

Vocational Pathways Sector Related Standards offered at Rutherford College 2024

The following subjects offer at least 20 level 2 credits from sector-related standards.

Year 12 Subject:

Sector/Industry

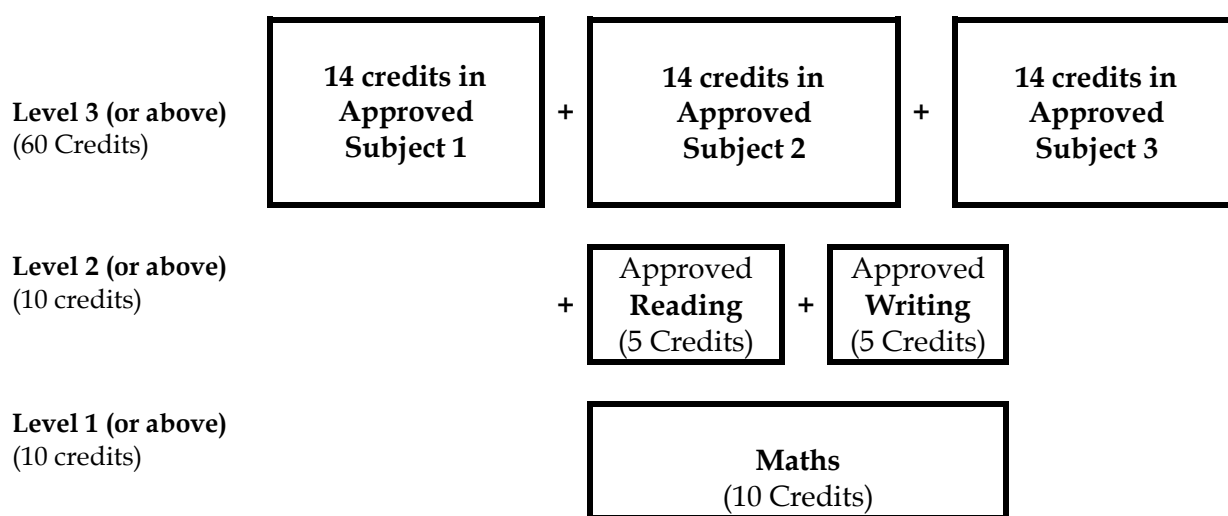
Electronics	Manufacturing and Technology
Engineering	Manufacturing and Technology
Computer Programming	Manufacturing and Technology
Building	Construction and Infrastructure
Early childhood	Social and Community
Travel & Tourism	Service Industries
Hospitality	Service Industries
Art	Creative Industries
Art Design	Creative Industries
Art History	Creative Industries
Art Photography	Creative Industries
Dance	Creative Industries
Drama	Creative Industries
Music	Creative Industries
Media Studies	Creative Industries
Classical Studies	Creative Industries
Graphics	Creative Industries
Computer Programming	Creative Industries

UNIVERSITY ENTRANCE

NCEA Minimum requirements for University Entrance

- Achievement of NCEA Level 3 – 60 credits at Level 3 or higher (and 20 credits at Level 2 or higher)
- 14 credits in each of the three subjects from the list of approved subjects
- The remaining credits to achieve NCEA Level 3 may come from either achievement or unit standards
- UE numeracy – 10 credits at Level 1 or higher from specified achievement standards or three specific numeracy unit standards
- UE literacy – 10 credits (five in reading and five in writing) from specific Level 2 and 3 Achievement Standards across a wide range of subjects. For this reason, we have identified UE Literacy credits in the following way:

* R = Reading credits* W = Writing credits* R/W = Reading and Writing credits



APPROVED SUBJECTS

Accounting Agriculture & Horticulture Biology Business Studies Calculus Chemistry Chinese Classical Studies Construction and Mechanical Technologies Cook Islands Maori Dance Design (Practical Art) Design and Visual Communication (Graphics) Digital Technologies Drama Earth and Space Science	Economics Education for Sustainability English French Geography German Health Education History History of Art Home Economics Indonesian Japanese Korean Latin Mathematics Media Studies Music Studies NZ Sign Language	Painting (Practical Art) Photography (Practical Art) Physical Education Physics Printmaking (Practical Art) Processing Technologies Psychology Religious Studies Samoan Science Sculpture (Practical Art) Social Studies Spanish Statistics Te Ao Haka Technology Te Reo Maori Te Reo Rangatira Tongan
---	--	--

University Admission Requirements:

In addition to achieving University Entrance, **most programmes have a more competitive entry** and you must also meet the admission requirements and be selected into your programme of study.

Some undergraduate programmes require you have taken specific subjects and gained minimum credits in certain subjects. Some programmes have other requirements such as a portfolio, audition and/or interview.

All undergraduate applicants at the University of Auckland and some other universities will be allocated a **rank score or a GES (guaranteed entry score)**.

How your rank score is calculated.

A student's rank score will be allocated on their best 80 credits at Level 3 or higher over a maximum of **five approved subjects** and weighted by the level of achievement.

- The rank score will be calculated by awarding the following points for **up to 24 credits in each approved subject taken at Level 3**. The maximum rank score is 320.

Excellence	4 points eg 80 x 4 = 320
Merit	3 points eg 80 x 3 = 240
Achieved	2 points eg 80 x 2 = 160

- If students achieve fewer than 80 credits at Level 3 or higher their rank score will be based on those credits they have achieved
- Level 3 subject requirements for a specific programme may be met in Year 12
- NCEA Level 3 credits achieved in Year 12 may be counted towards the 80 best credits used for ranking purposes
- Students are strongly encouraged to take **approved subjects (see list page 6)** and achievement standards as best preparation for University study

English language requirement for the University of Auckland:

University of Auckland have an entrance requirement called the *Academic English Language Requirement**. Students who do not meet this requirement will be offered places but will be required to do a specified English paper at the University.

***For students applying on the basis of NCEA results the applicant must have gained a minimum of 17 credits in English at Level 2 or 3.**

WHERE TO GO TO GET MORE INFORMATION

Visit the **Careers Department** to gather information and speak to Mrs Gibson or Mrs McGough, phone 834 3305 or email careers@rutherfordd.school.nz.

Visit the **Careers New Zealand** website www.careers.govt.nz. Advice on choosing subjects, subject matcher, skill matcher etc.

Visit **Vocational Pathways** website www.youthguarantee.net.nz

Visit the **MoneyHub** website: www.moneyhub.co.nz/scholarships-nz.html

Visit relevant tertiary websites -see list below

University of Auckland www.auckland.ac.nz

Massey University www.massey.ac.nz

Victoria University of Wellington - www.victoria.ac.nz

Otago University, Dunedin www.otago.ac.nz

University of Canterbury, Christchurch - www.canterbury.ac.nz

Manukau Institute of Technology - www.manukau.ac.nz

AUT University www.aut.ac.nz

The University of Waikato - www.waikato.ac.nz

Unitec, Mt Albert - www.unitec.ac.nz

Lincoln University - www.lincoln.ac.nz

Check out the **Rutherford College Careers** Facebook and Instagram pages to keep up to date with career information and opportunities, Open days, jobs etc.

SELECTING AND CHECKING MY SUBJECTS

Year 11

	Compulsory	Compulsory				
My Year 11 Choices	1 English	2 Mathematics	3	4	5	6

1. All students study **six** subjects. Stay as broad as possible.
2. All students study **English, Mathematics**.
3. Students are strongly encouraged to choose a **Science**.
4. Students are encouraged to take a **maximum of two subjects** from any one Learning Area. This restriction is to ensure students keep their options open for a variety of possible pathways in Year 12.
5. If you wish to study a Language in Year 11, you must have taken it in Year 10 unless you can prove prior learning to the HOF Languages.

Questions I have?

Year 12

	Compulsory					
My Year 12 Choices	1 English	2	3	4	5	6
		<i>Will I meet the prerequisites?</i> YES/NO	<i>Will I meet the prerequisites?</i> YES/NO	<i>Will I meet the prerequisites?</i> YES/NO	<i>Will I meet the prerequisites?</i> YES/NO	<i>Will I meet the prerequisites?</i> YES/NO

1. All students study **six** subjects.
2. All students study **English**. It is compulsory.
3. **Mathematics** is highly recommended.
4. There is a wide range of subjects available at Year 12 and students should carefully consider which subjects lead on to Year 13 subjects.
5. Year 12 students may undertake a multilevel course with subjects at Year 11, Year 12 or Year 13 based on ability and meeting prerequisites.
6. Year 12 students may choose to apply for one of the Vocational Academies – refer to pages 73 - 75.

Questions I have?

Year 13

My Year 13 Choices	1	2	3	4	5	6
	<i>Will I meet the prerequisites?</i>	<i>Will I meet the prerequisites?</i>	<i>Will I meet the prerequisites?</i>	<i>Will I meet the prerequisites?</i>	<i>Will I meet the prerequisites?</i>	<i>Will I meet the prerequisites?</i>
	YES/NO	YES/NO	YES/NO	YES/NO	YES/NO	YES/NO

1. All Year 13 students will study **five** subjects and have a study option.
2. If you want to do 6 subjects you must get the Year 13 Dean's permission.
3. Most Year 13 subjects have **prerequisites** which must be met before the subject can be taken. There are no compulsory subjects. You must meet the prerequisites or seek HOF approval.
4. Year 13 students may undertake a multilevel course with subjects at Year 11, Year 12 or Year 13 based on ability and meeting prerequisites. Some students may be offered places in the Young Scholar's programme at Auckland University.
5. Year 13 students may choose to apply for one of the Vocational Academies - refer to pages 73 - 75.

Questions I have?

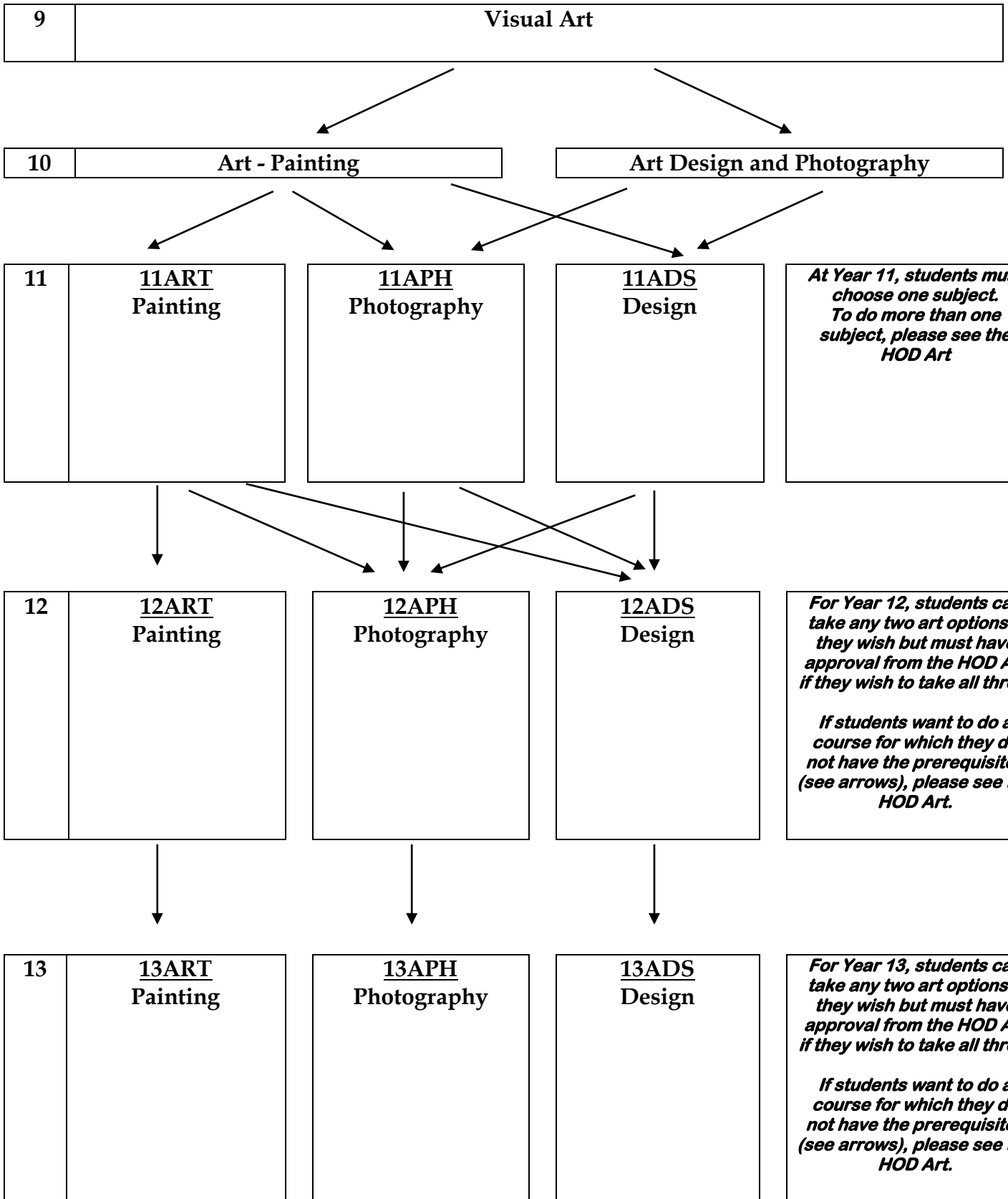
COURSE PROGRESSIONS

Subject	Year 9	Year 10
ARTS - Visual	Visual Arts	Art Art Design
	ARTS - Performing	Dance Drama Music
ENGLISH	English	English
ESOL	ELL	ELL
LANGUAGES	Chinese German Japanese	Chinese German Japanese
TE AO MAORI	Te Reo Maori Te Ao Maori	Te Reo Maori Te Ao Maori
MATHEMATICS	Mathematics	Mathematics
HEALTH EDUCATION PHYSICAL EDUCATION	Health Physical Education	Health Physical Education Sports Science
SCIENCE	Science	Science
SOCIAL SCIENCES	Social Studies	Business Studies Financial Literacy Philosophy Social Studies
TECHNOLOGY	Computer Science Digital Technology Fashion Design Food Technology Hard Materials	Computer Programming Digital Technology Electronics Fashion Design Food Technology Graphics Hard Materials
PATHWAYS		

COURSE PROGRESSIONS

Year 11	Year 12	Year 13 * UE Approved
Art Design Photography	Art Design Photography	Art * Design * Photography *
Dance Drama Music	Dance Drama Music	Dance * Drama * Music *
English	English	English *
Media Studies	Media Studies	Media Studies *
EL3	EL4	ELL / EAP
Chinese German Japanese	Chinese German Japanese	Chinese * German * Japanese *
Te Reo Maori Te Ao Haka Mahi-ā-Toi	Te Reo Maori Te Ao Haka Mahi-ā-Toi	Te Reo Maori * Te Ao Haka * Mahi-ā-Toi
Mathematics Mathematics Internal Mathematics Combined	Mathematics Mathematics Internal Mathematics Combined	Mathematics - Calculus * Mathematics - Statistics *
Physical Education Physical Activity & Leisure Studies Health	Physical Education Physical Activity & Leisure Studies Health Outdoor Education	Physical Education * Physical Activity & Leisure Studies Health * Outdoor Education Police and Uniformed Services
Science Physical Science Science Applied	Biology Chemistry Physics General Science	Biology * Chemistry * Physics * General Science *
Accounting Economics Geography History	Accounting Economics Geography History Travel and Tourism Classical Studies	Accounting * Economics * Geography * History * Travel and Tourism Classical Studies *
Computer Programming Electronics Fashion Design Food Technology Hospitality Graphics Building Engineering Technology Product Design	Computer Programming Electronics Fashion Design Food Technology Hospitality Graphics Building Engineering Technology Product Design Mechatronics	Computer Programming * Technology Product Design * Technology Fashion Design * Food Technology * Hospitality Graphics * Building Engineering Technology Product Design * Mechatronics
Skill Pathways	Skill Pathways Early Childhood Gateway	Skill Pathways Early Childhood Gateway

VISUAL ART COURSE PATHWAYS



VISUAL ART: PAINTING

Mrs J Reid - Room 84

Year 11 Painting [11ART]	Year 12 Painting [12ART]	Year 13 Painting [13ART]
Prerequisites: 10ART	Prerequisites: 8 credits from 11ART or HOD approval	Prerequisites: 8 credits from 12ART or HOD approval
<p>Course Information:</p> <p>This course involves elements of painting that use the skills of research, generating, developing and resolving individual ideas based on established practice. These are presented in both workbook and folio formats at curriculum level 6.</p> <p>Most materials are supplied but others are required as personal stationery items including paint and basic paintbrushes.</p> <p>Internal Assessments: AS91913 Resolved Artwork TBC</p> <p>External Assessments: AS91915 Folio of work AS91914 Explore processes</p> <p>Own materials and stationery costs for the year: approximately \$50</p> <p>Field Trip Costs: To be advised</p> <p>Endorseable: Yes TBC</p> <p>Internal Credits: 5 TBC</p> <p>External Credits: 10</p> <p>Level of Credits: 1</p> <p>Leads to: 12ART</p>	<p>Course Information:</p> <p>This course involves selecting a subject area of individual interest and applying research, drawing and painting tasks to it. Work is presented in both workbook and folio formats at curriculum level 7.</p> <p>Most materials are supplied but others are required as personal stationery items including paint and basic paintbrushes.</p> <p>Internal Assessments: AS91311 Applying knowledge AS91316 Developing Ideas</p> <p>External Assessments: AS91321 Folio of work</p> <p>Own materials and stationery costs for the year: approximately \$50</p> <p>Field Trip Costs: To be advised</p> <p>Endorseable: Yes</p> <p>Internal Credits: 8</p> <p>External Credits: 12</p> <p>Level of Credits: 2</p> <p>Leads to: 13ART</p>	<p>Course Information:</p> <p>This course involves selecting a subject area of individual interest and applying research, drawing and painting tasks to it. Work is presented in both workbook and folio formats at curriculum level 8.</p> <p>Most materials are supplied but others are required as personal stationery items including paint and basic paintbrushes.</p> <p>Internal Assessments: AS91446 Demonstrate understanding AS91451 Clarify Ideas</p> <p>External Assessments: AS91456 Folio of work</p> <p>Own materials and stationery costs for the year: approximately \$50</p> <p>Field Trip Costs: To be advised</p> <p>Endorseable: Yes</p> <p>Internal Credits: 8</p> <p>External Credits: 14</p> <p>Level of Credits: 3</p> <p>University Entrance Approved Examinable by Scholarship</p>

VISUAL ART: DESIGN

Mrs J Reid - Room 84

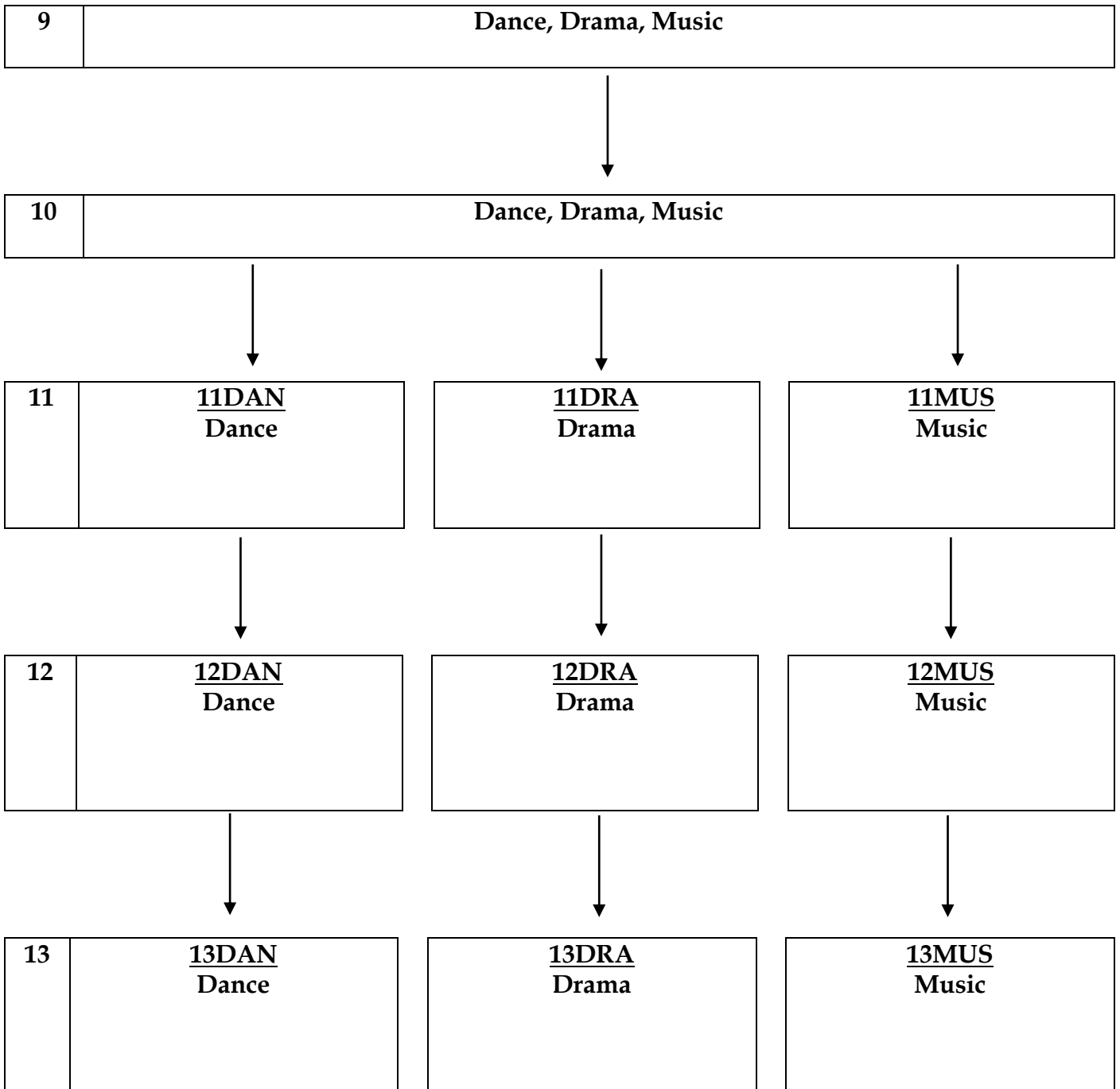
Year 11 Art Design [11ADS]	Year 12 Art Design [12ADS]	Year 13 Art Design [13ADS]
<p>Prerequisites:</p> <p>10ADS or 10ART or both. Own laptop is advantageous.</p>	<p>Prerequisites:</p> <p>11ADS or 8 credits from a Level 1 Art course with HOD approval. Own laptop is advantageous.</p>	<p>Prerequisites:</p> <p>8 credits from 12ADS or HOD approval. Own laptop is advantageous.</p>
<p>Course Information:</p> <p>This course involves solving design problems in two and/or three dimensions. The individual projects use both traditional drawing and digital media to draw, generate, develop and regenerate ideas in order to produce solutions based on contemporary practice. Work is presented in both workbook and folio format at curriculum level 6.</p> <p>Students will need regular access to the Adobe Suite, including from home.</p> <p>Most materials are supplied but others are required as personal stationery.</p> <p>Internal Assessments: AS91913 Resolved Artwork TBC</p> <p>External Assessments: AS91915 Folio of work AS91914 Explore processes</p> <p>Printing and stationery costs for the year approximately \$30 Adobe Creative Suite License = \$10.00 Art Board Printing = \$14.00</p> <p>Field Trip Costs: To be advised</p> <p>Endorseable: Yes TBC</p> <p>Internal Credits: 5 TBC</p> <p>External Credits: 10</p> <p>Level of Credits: 1</p> <p>Leads to: 12ADS</p>	<p>Course Information:</p> <p>This course involves using design processes and procedures in both traditional and digital media. Work is presented in a visual diary, digital or conventional workbook and folio format at curriculum level 7.</p> <p>Students will need regular access to the Adobe Suite, including from home.</p> <p>Most materials are supplied but others are required as personal stationery.</p> <p>Internal Assessments: AS91310 Apply knowledge AS91315 Developing Ideas</p> <p>External Assessments: AS91320 Folio of work</p> <p>Printing and stationery costs for the year approximately \$30 Adobe Creative Suite License = \$10.00 Art Board Printing = \$28.00</p> <p>Field Trip Costs: To be advised</p> <p>Endorseable: Yes</p> <p>Internal Credits: 8</p> <p>External Credits: 12</p> <p>Level of Credits: 2</p> <p>Leads to: 13ADS</p>	<p>Course Information:</p> <p>This course involves using design processes and procedures in both traditional and digital media. Work is presented in a visual diary, digital or conventional workbook and folio format at curriculum level 8.</p> <p>Students will need regular access to the Adobe Suite, including from home.</p> <p>Most materials are supplied but others are required as personal stationery.</p> <p>Internal Assessments: AS91445 Demonstrate understanding-optional AS91450 Clarify Ideas</p> <p>External Assessments: AS91455 Folio of work</p> <p>Printing and stationery costs for the year approximately \$30 Adobe Creative Suite License = \$10.00 Art Board Printing = \$42.00</p> <p>Field Trip Costs: To be advised</p> <p>Endorseable: Yes</p> <p>Internal Credits: 8</p> <p>External Credits: 14</p> <p>Level of Credits: 3</p> <p>Leads to: University Entrance Approved Examinable by Scholarship</p>

VISUAL ART: PHOTOGRAPHY

Mrs J Reid - Room 84

Year 11 Photography [11APH]	Year 12 Photography [12APH]	Year 13 Photography [13APH]
<p>Pre requisites: 10ADS which includes a photography project. Own digital camera is advantageous. Own laptop is advantageous.</p>	<p>Pre requisites: 11APH or 8 credits from a Level 1 Art course with HOD approval. Own digital camera is advantageous. Own laptop is advantageous.</p>	<p>Pre requisites: 8 credits from 12APH or HOD approval. Own digital camera is advantageous. Own laptop is advantageous.</p>
<p>Course Information:</p> <p>This course involves the technical and picture-making aspects of both traditional and digital photography by drawing, analysing, generating, developing and regenerating ideas to produce solutions based on contemporary practice. Work is presented using workbook and folio format at curriculum Level 6.</p> <p>Students will need regular access to the Adobe Suite, including from home.</p> <p>Some materials are supplied but others are required as personal stationery. Please see the stationery list.</p> <p>Printing and stationery costs for the year approximately \$30 Adobe Creative Suite License = \$10.00 Art Board Printing = \$14.00 School cameras can be loaned to students</p> <p>Internal Assessments: AS91913 Resolved Artwok AS91317 Develop Ideas</p> <p>External Assessments: AS91914 Explore processes</p> <p>Field Trip Costs: To be advised</p> <p>Endorseable: No</p> <p>Internal Credits: 9</p> <p>External Credits: 5</p> <p>Level of Credits: 1 and 2</p> <p>Leads to: 12APH</p>	<p>Course Information:</p> <p>This course involves digital photography. Learning is about researching ideas, developing ideas, regenerating and resolving ideas based on contemporary practice. Work is presented in a visual diary and folio formats at curriculum Level 7.</p> <p>Students will need regular access to the Adobe Suite, including from home.</p> <p>Some materials are supplied but others are required as personal stationery. Please see the stationery list.</p> <p>Printing and stationery costs for the year approximately \$30 Adobe Creative Suite License = \$10.00 Art Board Printing = \$28.00 School cameras can be loaned to students</p> <p>Internal Assessments: AS91317 Develop Ideas OR AS91307 Demonstrate an understanding</p> <p>External Assessments: AS91322 Folio of work</p> <p>Field Trip Costs: To be advised</p> <p>Endorseable: Yes</p> <p>Internal Credits: 4</p> <p>External Credits: 12</p> <p>Level of Credits: 2</p> <p>Leads to: 13APH</p>	<p>Course Information:</p> <p>This course involves digital photography. Learning is about researching ideas, developing ideas, regenerating and resolving ideas based on contemporary practice. Work is presented in a visual diary and folio at curriculum Level 8.</p> <p>Students will need regular access to the Adobe Suite, including from home.</p> <p>Some materials are supplied but others are required as personal stationery. Please see the stationery list.</p> <p>Printing and stationery costs for the year approximately \$30 Adobe Creative Suite License = \$10.00 Art Board Printing = \$42.00 School cameras can be loaned to students</p> <p>Internal Assessments: AS91447 Demonstrate understanding - optional AS91452 Clarify Ideas</p> <p>External Assessments: AS91457 Folio of work</p> <p>Field Trip Costs: To be advised</p> <p>Endorseable: Yes</p> <p>Internal Credits: 8</p> <p>External Credits: 14</p> <p>Level of Credits: 3</p> <p>University Entrance Approved Examinable by Scholarship</p>

PERFORMING ARTS COURSE PATHWAYS



DANCE

Mrs P Fahitua - Room 8

Year 11 Dance [11DAN]	Year 12 Dance [12DAN]	Year 13 Dance [13DAN]
Prerequisites: A satisfactory Year 10 Dance Course or TIC approval.	Prerequisites: 12+ Credits in Year 11 Dance or TIC approval.	Prerequisites: 12+ Credits in Year 12 Dance or TIC approval.
<p>Course Information:</p> <p>In this course you will move your thinking and show your understanding through movement, talking and some writing.</p> <p>You will manipulate dance elements to choreograph dance sequences. You will develop your performance skills. You will learn cultural dance to understand and explain how movements are connected to the background of the style.</p> <p>In this course you will enhance your people skills and develop your creativity, physical skills and most of all your confidence.</p> <p>Internal Assessments: AS91936 Compose a dance sequence for a given brief AS91937 Perform sequences</p> <p>External Assessments: AS91938 Demonstrate understanding of the relationship between key features and cultural context of a dance style (TBC)</p> <p>Field Trip Costs: To be advised</p> <p>Endorseable: Yes</p> <p>Internal Credits: 10</p> <p>External Credits: 5</p> <p>Level of Credits: 1</p> <p>Leads to: 12 Dance</p>	<p>Course Information:</p> <p>This course builds on skills developed in Level 1. Students must choreograph dance works, perform varying styles of dance and undertake research into contemporary dance.</p> <p>Students will also view and respond to dance works. You will develop confidence, physical skills, problem-solving skills and self and people management skills. There will be a number of opportunities to perform throughout the year.</p> <p>Note: 91209 Perform a repertoire of dance is an extension standard by agreement with Mrs Fahitua</p> <p>Internal Assessments: AS91205 Choreography Group AS91206 Choreography Solo AS91207 Understanding Styles AS91208 Theatre Dance</p> <p>External Assessments: AS91211 Interpret a performance</p> <p>Field Trip Costs: To be advised</p> <p>Endorseable: Yes</p> <p>Internal Credits: 16</p> <p>External Credits: 4</p> <p>Level of Credits: 2</p> <p>Leads to: 13 Dance</p>	<p>Course Information:</p> <p>This is a contemporary dance course covering technique, choreography and performance. You will create dance for stage including production technologies, performing in group work and a solo.</p> <p>You will also critically review dance works and demonstrate knowledge of dance in New Zealand. The course is performance oriented and would suit those with a strong interest in a career in the Performing Arts.</p> <p>Internal Assessments: AS91588 Realise a Concept AS91589 Choreograph AS91590 Solo or Duet AS91591 Group Dance</p> <p>External Assessments: AS91595 NZ Dance History * R/W</p> <p>Field Trip Costs: To be advised</p> <p>Endorseable: Yes</p> <p>Internal Credits: 16</p> <p>External Credits: 4</p> <p>Level of Credits: 3</p> <p>University Entrance Approved Examinable by Scholarship</p>

DRAMA

Miss Wilson - Room 85

Year 11 Drama [11DRA]	Year 12 Drama [12DRA]	Year 13 Drama [13DRA]
Prerequisites: A satisfactory Year 10 Drama course or HOF approval	Prerequisites: 12+ credits in Year 11 Drama or HOF approval (including at least 4 external credits)	Prerequisites: 12+ credits in Year 12 Drama or HOF approval (including at least 4 external credits)
<p>Course Information:</p> <p>Drama provides ākonga an opportunity to develop important life skills (for example self-confidence, critical thinking, collaboration, creativity, teamwork and self-discipline) and this course allows students to study Drama through practical experience. It will suit anyone who has a strong interest in drama and theatre. The course includes the following areas of exploration: drama techniques (voice, movement and body awareness), devising drama, reviewing performances and demonstrating knowledge of drama and theatre forms.</p> <p>Internal Assessments: AS99141 Participate in creative strategies to create Drama (TBC)</p> <p>Optional: AS91940 Explore the function of theatre Aotearoa</p> <p>External Assessments: AS91942 Use drama techniques to perform a scripted role for an audience (TBC)</p> <p>Field Trip Costs: Nil</p> <p>Endorseable:</p> <p>Internal Credits:</p> <p>External Credits:</p> <p>Level of Credits: 1</p> <p>Leads to: Level 2 Drama</p>	<p>Course Information:</p> <p>This course will continue to develop individuals' life skills and allow them to study a broader range of Drama through practical experience. It will suit anyone who has a strong interest in drama and theatre.</p> <p>This course builds on knowledge gained in Year 11 and covers the following areas of study: drama techniques (voice, movement and body awareness), scripted and devised drama, developing knowledge of drama forms and participating in acting roles in production work. The course offers one external standard which focuses on live performances seen throughout the year. Students will be required to attend at least two live performances during the year.</p> <p>Internal Assessments: AS91213 Drama Techniques * R AS91214 Devising Drama AS91218 Perform a Role * R</p> <p>External Assessments: AS91219 Analyse live performance*W</p> <p>Field Trip Costs: Nil</p> <p>Endorseable: Yes</p> <p>Internal Credits: 14</p> <p>External Credits: 4</p> <p>Level of Credits: 2</p> <p>Leads to: Level 3 Drama</p>	<p>Course Information:</p> <p>This course builds on all of the skills and knowledge learnt in Years 11 and 12 and is suited to anyone who has a strong interest in performing arts.</p> <p>This course covers a variety of drama knowledge and skills. Students are now expected to understand and perform a variety of drama forms in greater depth. The course offers one external standard which focuses on live performances seen throughout the year. Students will be required to attend at least two live performances during the year.</p> <p>Internal Assessments: AS91512 Drama Techniques * R AS91513 Devising Drama AS91517 Perform a Role * R</p> <p>External Assessments: AS91518 Analyse live performance*W</p> <p>Field Trip Costs: Nil</p> <p>Endorseable: Yes</p> <p>Internal Credits: 14</p> <p>External Credits: 4</p> <p>Level of Credits: 3</p> <p>University Entrance Approved Examinable by Scholarship</p>

MUSIC

Mrs Taula - Room 9

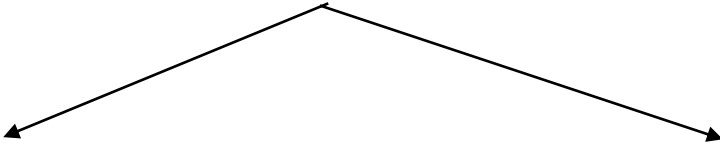
Year 11 Music [11MUS]	Year 12 Music [12MUS]	Year 13 Music [13MUS]
Prerequisites: At least three year's practical experience on student's chosen musical instrument, standard equivalent to Grade 3 Theory, and some composition experience or by HOF approval via audition and diagnostic testing.	Prerequisites: At least 16 credits gained in NCEA Level 1 Music. At least three year's practical experience on student's chosen musical instrument and standard equivalent to Grade 4 Theory or by HOF approval via audition and diagnostic testing.	Prerequisites: At least 16 credits gained in NCEA Level 2 Music. At least four year's practical experience on student's chosen musical instrument and standard equivalent to Grade 5 Theory or by HOF approval via audition and diagnostic testing.
<p>Course Information:</p> <p>This course develops music skills which include the study of music works, materials of music, performance, composition, aural and theory.</p> <p>It is mandatory for students to join music groups and attend music trips.</p> <p>All students will be enrolled into the Music Itinerant Scheme where they must attend a 30 minute lesson once a week with a music specialist.</p> <p>Internal Assessments: AS91948 Use musical skills in a music style AS91949 Demonstrate performance skills US32301 Notation</p> <p>External Assessments: AS91950 Contexts</p> <p>Field Trip Costs: Trip by trip basis</p> <p>Endorseable: Yes</p> <p>Internal Credits: 12</p> <p>External Credits: 5</p> <p>Level of Credits: 1</p> <p>Leads to: 12 Music</p>	<p>Course Information:</p> <p>This course is in greater depth than Level 1. Additional skills include instrumentation, transcription of scores, score reading, harmonic writing and second solo instrument.</p> <p>Students are expected to practise their performance instrument for at least 60 minutes a day.</p> <p>It is mandatory for students to join music groups and attend music trips.</p> <p>All students will be enrolled into the Music Itinerant Scheme where they must attend a 30 minute lesson once a week with a music specialist.</p> <p>Other assessment standards are available such as 2nd Instrument Solo Performance.</p> <p>Internal Assessments: AS91270 Solo Performance AS91271 Composition AS91272 Group Performance AS91278 Investigation of NZ Music</p> <p>External Assessments: AS91276 Score reading</p> <p>Field Trip Costs: Trip by trip basis</p> <p>Endorseable: Yes</p> <p>Internal Credits: 20</p> <p>External Credits: 4</p> <p>Level of Credits: 2</p> <p>Leads to: 13 Music</p>	<p>Course Information:</p> <p>This course is in greater depth than Level 2. Additional skills include compositional portfolios and second solo instrument. Emphasis is placed on a student centred programme which highlights the student's strengths and talents in preparation for tertiary study.</p> <p>It is mandatory for students to join music groups and attend music trips.</p> <p>All students will be enrolled into the Music Itinerant Scheme where they must attend a 30 minute lesson once a week with a music specialist.</p> <p>Other assessment standards are available such as Composition, Arrangement, Song Writing and 2nd Instrument Solo Performance.</p> <p>Internal Assessments: AS91416 Solo Performance AS91418 Group performance AS91425 Research a Music topic * R</p> <p>External Assessments: AS91423 Context</p> <p>Field Trip Costs: Trip by trip basis</p> <p>Endorseable: Yes</p> <p>Internal Credits: 18</p> <p>External Credits: 4</p> <p>Level of Credits: 3</p> <p>University Entrance Approved Examinable by Scholarship</p>

ENGLISH COURSE PATHWAYS

9	English
---	---------

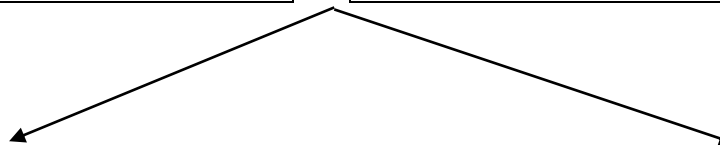


10	English
----	---------



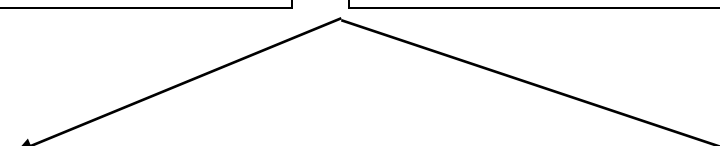
11	<u>11ENG</u> English
----	-------------------------

<u>11MDS</u> Media Studies



12	<u>12ENG</u> English
----	-------------------------

<u>12MDS</u> Media Studies



13	<u>13ENG</u> English
----	-------------------------

<u>13MDS</u> Media Studies

ENGLISH

Ms Betanzo – B Block

Year 11 English [11ENG]	Year 12 English [12ENG]	Year 13 English [13ENG]
The Level One English course covers the Making Meaning and Creating Meaning strands of the New Zealand Curriculum. Level One English Achievement Standards count for Literacy.	The Level Two English course covers the Making Meaning and Creating Meaning strands of the New Zealand Curriculum. It offers pathways to subject and course endorsement and Level Three English.	Year 13 English covers the Making Meaning and Creating Meaning strands of the New Zealand Curriculum. It offers pathways to subject and course endorsement, in addition to University Entrance and Scholarship.
Prerequisites: None.	Prerequisites: None.	Prerequisites: Well-developed reading, writing and presenting skills.
<p>Course Information:</p> <p>This course comprises English Achievement Standards and provides pathways to Level Two English. Please note that all English credits count towards Level One Literacy.</p> <p>Internal Assessments: AS91924 Demonstrate understanding of how context shapes verbal language use AS91925 Demonstrate understanding of specific aspects of studied text</p> <p>External Assessments AS91927 Demonstrate understanding of significant aspects of unfamiliar texts</p> <p>Endorseable: Yes</p> <p>Internal Credits: 10</p> <p>External Credits: 5</p> <p>Level of Credits: 1</p> <p>Leads to: 12 English</p>	<p>Course Information:</p> <p>The Year 12 English programme builds on the Year 11 course. This course provides pathways to Level Three English.</p> <p>Internal Assessments: AS91101 Writing portfolio * W AS91102 Oral text AS91105 Information literacy * R</p> <p>External Assessments: AS91098 Essay * R/W AS91099 Essay * W</p> <p>Endorseable: Yes</p> <p>Internal Credits: 13</p> <p>External Credits: 8</p> <p>Level of Credits: 2</p> <p>Leads to: 13 English</p>	<p>Course Information:</p> <p>This academic English programme caters for students who have a sound level of achievement in Year 12.</p> <p>Internal Assessments: AS91475 Writing portfolio * W AS91476 Seminar (optional) AS91479 Critical texts * R AS91480 Close viewing</p> <p>External Assessments: AS91472 Essay * R/W AS91473 Essay * W</p> <p>Endorseable: Yes</p> <p>Internal Credits: 13</p> <p>External Credits: 8</p> <p>Level of Credits: 3</p> <p>Leads to: University Entrance Approved Examinable by Scholarship</p>

MEDIA STUDIES

Ms Betanzo - B Block

Year 11 Media Studies [11MDS]	Year 12 Media Studies [12MDS]	Year 13 Media Studies [13MDS]
<p>Prerequisites:</p> <p>Operating at curriculum Level 5 in English with some Merits in 10 English; approval of TIC.</p>	<p>Prerequisites:</p> <p>Year 11 Media Studies with at least 12 credits or 12 Credits in Year 11 English or approval of TIC.</p>	<p>Prerequisites:</p> <p>Year 12 Media Studies with at least 12 credits gained or Year 12 English with approval of TIC.</p>
<p>Course Information:</p> <p>This humanities course is designed to teach an understanding of the workings of the mass media. Students will gain knowledge, skills, and experience to explore media concepts, explore language in media texts and use media conventions and technology to create media.</p> <p>Internal Assessments: To be confirmed</p> <p>External Assessments: To be confirmed</p> <p>Endorseable: TBC</p> <p>Internal Credits: TBC</p> <p>External Credits: TBC</p> <p>Level of Credits: 1</p> <p>Leads to: 12 Media Studies</p>	<p>Course Information:</p> <p>This is an academic course with hands on experience in journalism. The focus is on the interaction between media and audience and between traditional and new media.</p> <p>The practical component involves the production of a podcast, and the theory component involves film genre (horror, musical or teen) and investigation of media representation of a group or culture.</p> <p>Internal Assessments: AS91250 Representation in the media AS91252 Design and plan AS91253 Media product AS91255 Write for the media * W</p> <p>External Assessments: AS91251 Media Genre * R/W</p> <p>Endorseable: Yes</p> <p>Internal Credits: 16</p> <p>External Credits: 4</p> <p>Level of Credits: 2</p> <p>Leads to: 13 Media Studies</p>	<p>Course Information:</p> <p>This course continues to investigate the relationship between media and society, using modern media such as film, television, social media and internet.</p> <p>Students will analyse the influences of the media on aspects of our lives as well as produce their own magazine spread. It is an ideal pathway for those intending to pursue a career in media or a degree in humanities or communications. It is also part of the Creative Industries vocational pathway.</p> <p>Scholarship tutorials are available.</p> <p>Internal Assessments: AS91494 Design and plan AS91495 Media product AS91496 Significant development AS91497 Write for the media * W</p> <p>External Assessments: AS91493 Genre and society * R/W</p> <p>Endorseable: Yes</p> <p>Internal Credits: 16</p> <p>External Credits: 4</p> <p>Level of Credits: 3</p> <p>University Entrance Approved Examinable by Scholarship</p>

ENGLISH LANGUAGE

Ms Gerzic - International Village

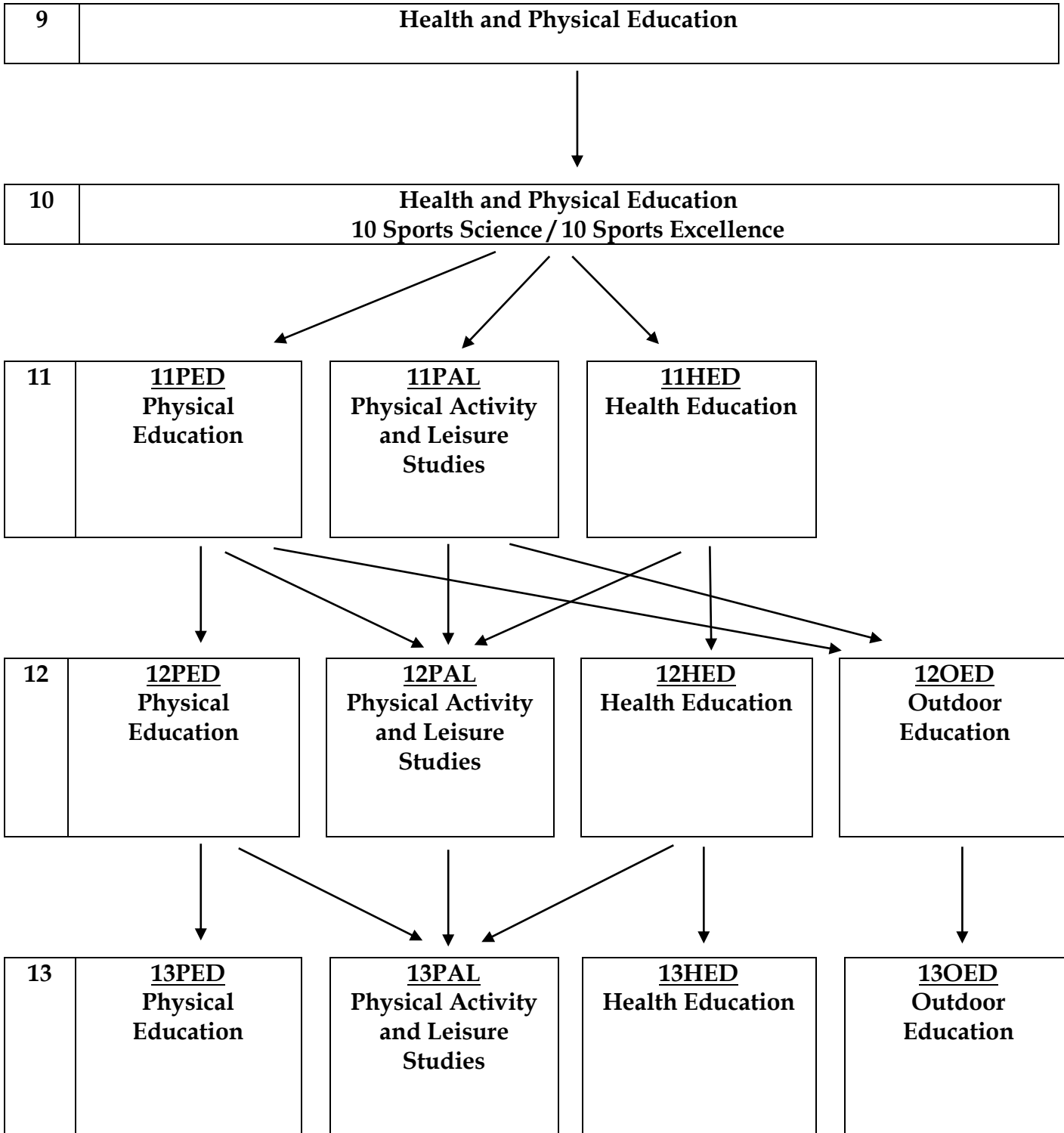
Year 9 – 13 English Language <i>Elementary</i> [11EL1 & 11ELA]	Year 9 – 13 English Language <i>Pre-Intermediate</i> [12EL2 & 12ELB]	Year 11 – 13 English Language <i>Intermediate</i> [11EL3 & 11ELC]
<p>Prerequisites:</p> <p>Not applicable.</p>	<p>Prerequisites:</p> <p>Gained 20 credits from 11EL1 or by discussion with HOF.</p>	<p>Prerequisites:</p> <p>Gained at least 15 credits from 12EL2 or by discussion with HOF.</p>
<p>Course Information:</p> <p>This course is for new arrivals in New Zealand who have limited previous knowledge of the English language.</p> <p>The course develops students’ language competency and knowledge of the most common words for basic concepts, structural words and subject-specific technical vocabulary.</p> <p>This is developed through oral communication, explicit grammar teaching and a variety of reading and writing tasks at the 1000 words level.</p> <p>Assessment graded at Achieved or Not Achieved.</p> <p>Students will need two options of 11EL1.</p> <p>Internal Assessments: US31001 Read and understand simple texts for practical purposes US30994 Read and understand simple texts on familiar topics US27996 Write basic texts on familiar topics US27997 Write basic texts US27998 Complete Basic forms</p> <p>Endorseable: No</p> <p>Internal Credits: 25</p> <p>External Credits: 0</p> <p>Level of Credits: 1</p> <p>Leads to: 12EL2</p>	<p>Course Information:</p> <p>This course will further develop language and literacy skills in reading, writing, listening and speaking at the 2000 words level.</p> <p>Students in this class will be taught grammar and punctuation and will start developing basic academic reading and writing skills.</p> <p>Assessment graded at Achieved or Not Achieved.</p> <p>Students will need two options of 12EL2.</p> <p>Internal Assessments: US30995 Read and understand a straightforward text on a familiar topic US27999 Write a simple connected text on a familiar topic US28000 Write a simple text for a practical purpose US31026 Present information on a familiar topic (EL) US31006 Read and understand a range of straightforward written texts independently US31002 Read for practical purpose US30980 Listen to a familiar spoken text</p> <p>Endorseable: No</p> <p>Internal Credits: 35</p> <p>External Credits: 0</p> <p>Level of Credits: 2</p> <p>Leads to: 11EL3</p>	<p>Course Information:</p> <p>The course will teach English language at an intermediate level of proficiency. The course will continue to develop academic skills of reading, writing, listening and speaking with special attention given to grammar, syntax and academic vocabulary.</p> <p>Assessments can be graded with Achieved, Merit or Excellence.</p> <p>Students will need two options of 11EL3.</p> <p>Internal Assessments: US30997 Read and understand text on a familiar topic US31004 Read a text for a practical purpose US31027 Present on a familiar topic US28068 Write text on a familiar topic US28069 Write texts for practical purposes US31008 Read and understand a range of written texts independently</p> <p>Endorseable: No</p> <p>Internal Credits: 30</p> <p>External Credits: 0</p> <p>Level of Credits: 3</p> <p>Leads to: 12EL4</p>

ENGLISH LANGUAGE

Ms Gerzic - International Village

Year 12 English Language <i>Advanced</i> [12EL4 & 12ELD]	Year 13 English Language [13ELL]	Year 13 English for Academic Purposes [13EAP]
Prerequisites: Gained at least 10 credits from 11EL3 or by discussion with HOF.	Prerequisites: Gained at least 10 credits or more from 11EL3 or 12EL4.	Prerequisites: Gained at least 10 credits or more from 12EL4 or by discussion with HOF.
<p>Course Information:</p> <p>This course will teach English language at an upper-intermediate level of proficiency. The course will cover the four skills of reading, writing, speaking and listening. Special attention will be given to further development of conventions in writing: language features and accuracy (grammar and syntax). Critical reading and academic literacy skills are the focus of the course where 4 of the English for Academic Purposes (Level 3) standards will be covered in preparation for year 13 EAP course. Students will be able to meet Literacy co-requisites in both Reading and Writing.</p> <p>Internal Assessments: US30996 Read complex text in applied context US30507 Write under test conditions in EAP *W US30990 Understand spoken interaction in familiar context US30511 Read and apply understanding in EAP *R US30508 Write short crafted text using resources in EAP US30510 Deliver a short presentation for academic purpose AS91106 Form developed personal responses *R</p> <p>Endorseable: No</p> <p>Internal Credits: 31</p> <p>External Credits: 0</p> <p>Level of Credits: 2+</p> <p>Leads to: 13 English for Academic Purposes</p>	<p>Course Information:</p> <p>This course is only for ESL students and it offers a variety of assessments at Level 3 and 4 ELL. The students will also work on their writing portfolio of wide reading [English Achievement standard 91106].</p> <p>This course must be taken in combination with 13EAP.</p> <p>Internal Assessments (13ELL): US30982 Understand spoken text on a familiar topic US30997 Read a text on a familiar topic US28062 Participate in a formal interview US28068 Write a text on a familiar topic US3133 Write a text in an applied context US30989 Understand complex interaction in an applied context AS91106 Form developed personal responses</p> <p>Endorseable: No</p> <p>Internal Credits: 34</p> <p>External Credits: 0</p> <p>Level of Credits: 2 and 3+</p>	<p>Course Information:</p> <p>This course is open to all students, not only ESL. This course will teach the vocabulary needed for University and the high level of academic skills required in note-taking, reading, writing, presenting and information processing.</p> <p>This is an internally assessed course offering Literacy credits in Reading and Writing required for University Entrance in New Zealand.</p> <p>Internal Assessments (13EAP): US22750 Write a crafted text using researched material *W US22751 Read and process information *R US22891 Deliver an oral presentation AS91105 Use information literacy to form developed conclusion *R</p> <p>Endorseable: No</p> <p>Internal Credits: 17</p> <p>External Credits: 0</p> <p>Level of Credits: 2 and 4</p>

HEALTH AND PHYSICAL EDUCATION COURSE PATHWAYS



PHYSICAL EDUCATION

Ms Wilson - Physical Education Office / Sports Hall

Year 11 Physical Education [11PED]	Year 12 Physical Education [12PED]	Year 13 Physical Education [13PED]
<p>Prerequisites:</p> <p>Teacher recommendation based on attitude and effort in 10PED/10SPS/10SPX.</p>	<p>Prerequisites:</p> <p>14 Credits at Level 1 PED. For new students 14 credits at Level 1 English and/or 14 credits at Level 1 Science, and/or the approval of the HOF of PE.</p>	<p>Prerequisites:</p> <p>Must have achieved 14 credits at Level 2 PED and have the approval of the HOF of PE.</p>
<p>Course Information:</p> <p>This course is designed to introduce students to the key biophysical and socio-cultural concepts of physical education. These include anatomy, biomechanics, exercise physiology, interpersonal skills, risk and safety management, and societal influences on physical activity. Students will learn through both theoretical and physical contexts, including outdoor education based activities (snorkelling/surfing and mountain biking). This course is ideal for students who are passionate about sport and physical activity. Physical Education is a university approved subject. Further study in Level 3 PED allow students to develop the possibility of tertiary study in sport and sport science related subjects.</p> <p>Internal Assessments: AS92016 - TBC AS92017 - TBC</p> <p>External Assessments: AS92018 - TBC AS92019 - TBC</p> <p>Field Trip Costs: are heavily subsidised. However, students can voluntarily contribute to the cost of one or both of the trips. Contribution to be advised.</p> <p>Endorseable: Yes</p> <p>Internal Credits: 10</p> <p>External Credits: 5 or 10</p> <p>Level of Credits: 1</p> <p>Leads to: 12 Physical Education 12 Outdoor Education 12 Physical Activity & Leisure Studies</p>	<p>Course Information:</p> <p>This course is an extension of the Level 1 PED course. Students will look more in depth at biophysical and socio-cultural concepts relating to physical activity.</p> <p>Extensions to student's knowledge include the ability to analyse skills for improvement and evaluate performance improvement programmes. Students will also be challenged to think critically.</p> <p>Internal Assessments: AS91328 Analysis of skill improvement AS91329 Biophysical principles for training AS91330 Practical performance AS91331 Sociology of sport AS91336 Group processes</p> <p>Endorseable: Yes* <i>NZQA Exception to Endorsement Rule</i></p> <p>Internal Credits: 20</p> <p>External Credits: 0</p> <p>Level of Credits: 2</p> <p>Leads to: 13 Physical Education 13 Physical Activity & Leisure Studies 13 Outdoor Education</p>	<p>Course Information:</p> <p>This course is designed to develop higher level critical thinking skills and analyse in depth biophysical and socio-cultural concepts.</p> <p>Students will appraise their own performance while considering all aspects that can impact on performance improvement. Their application of knowledge is an extension of the Level 2 PED programme.</p> <p>Students will have the opportunity to sit the Physical Education Scholarship external assessment.</p> <p>Internal Assessments: AS91499 Skill analysis AS91500 Performance improvement AS91501 Practical performance AS91505 Contemporary Leadership AS91498 Influences on participation</p> <p>Endorseable: Yes * <i>NZQA Exception to Endorsement Rule</i></p> <p>Internal Credits: 19</p> <p>External Credits: 0</p> <p>Level of Credits: 3</p> <p>University Entrance Approved Scholarship subject</p>

HEALTH EDUCATION

Ms Wilson - Physical Education Office / Sports Hall

Year 11 Health [11HED]	Year 12 Health [12HED]	Year 13 Health [13HED]
<p>Prerequisites:</p> <p>None.</p>	<p>Prerequisites:</p> <p>14 credits at Level 1 Health. For new students 15 credits at Level 1 English and/or 14 credits at Level 1 English, or at the approval of the HOF of PE.</p>	<p>Prerequisites:</p> <p>14 credits at Level 2 Health. For new students 15 credits at Level 2 English, or at the approval of the HOF of PE.</p>
<p>Course Information:</p> <p>The Year 11 Health course explores current issues relevant to adolescents. Health aims to develop the knowledge, understandings, skills and attitudes needed to maintain and enhance personal health. Specifically exploring the four Health concepts; Hauora, health promotion, attitudes and values and the socio-ecological perspective.</p> <p>Students will understand how to use interpersonal skills that enhance relationships, demonstrate strategies for positive sexuality and make health enhancing decisions in drug related situations. Well-being is explored and strategies are implemented to take action for total well-being.</p> <p>Health is a university approved subject. Future study in Level 3 Health will allow students to develop the possibility of tertiary study in Health related subjects.</p> <p>Internal Assessments: AS92008 Demonstrate understanding of wellbeing AS92009 Demonstrate understanding of decision-making process</p> <p>External Assessments: AS92010 - TBC AS92011 - TBC</p> <p>Endorseable: Yes</p> <p>Internal Credits: 10</p> <p>External Credits: 5 or 10</p> <p>Level of Credits: 1</p> <p>Leads to: 12 Health</p>	<p>Course Information:</p> <p>The Year 12 Health course is aimed to develop the knowledge, understandings, skills and attitudes needed to maintain and enhance personal health. This includes enhancing interactions and relationships with other people.</p> <p>Students will understand issues within society including investigating adolescent health issues, sexuality and managing resilience in stressful or life changing scenarios. Students will take action to enhance the wellbeing of others.</p> <p>Health is a university approved subject. Future study in Level 3 Health will allow students to develop the possibility of tertiary study in Health related subjects. This study can lead to the 4th biggest employment sector in New Zealand.</p> <p>Internal Assessments: AS91236 Management change AS91239 Sexuality and gender AS91237 Health promotion</p> <p>External Assessments: AS91235 Health issue</p> <p>Endorseable: Yes</p> <p>Internal Credits: 15</p> <p>External Credits: 5</p> <p>Level of Credits: 2</p> <p>Leads to: 13 Health</p>	<p>Course Information:</p> <p>This course continues to develop the student's ability to critically evaluate and analyse contexts of Health related issues in our society.</p> <p>Students learn to analyse, evaluate, and, where appropriate, take action to enhance the well-being of individuals, communities, and society. Students are challenged to think critically about a range of personal and societal health-related perceptions and practices.</p> <p>Learning in senior health education provides the foundation for pathways to the social and health sciences (education, psychology, sociology, philosophy, politics, law, economics, medicine, health, justice, and social services).</p> <p>Internal Assessments: AS91461 NZ Health Issue *R AS91463 Evaluate Health Practises *R AS91464 Ethical issues in Relation to Well-being *R</p> <p>External Assessments: AS91462 International Health Issue *R/W</p> <p>Endorseable: Yes</p> <p>Internal Credits: 14</p> <p>External Credits: 5</p> <p>Level of Credits: 3</p> <p>University approved subject Scholarship subject</p>

PHYSICAL ACTIVITY AND LEISURE STUDIES

Ms Wilson – Physical Education Office / Sports Hall

Year 11 Physical Activity and Leisure Studies [11PAL]	Year 12 Physical Activity and Leisure Studies [12PAL]	Year 13 Physical Activity and Leisure Studies [13PAL]
<p>Prerequisites:</p> <p>None.</p>	<p>Prerequisites:</p> <p>None.</p>	<p>Prerequisites:</p> <p>This course caters for students who do not meet the pre-requisites for Level 3 PED or Level 3 OED.</p>
<p>Course Information:</p> <p>This course is designed to give students knowledge, understanding and skills to enhance personal health and physical development. Students will be introduced to concepts around the benefits of physical activity, how to identify and overcome barriers, interpersonal skills and attitudes and values surrounding physical activity and sport.</p> <p>Internal Assessments: To be confirmed.</p> <p>Endorseable: Yes</p> <p>Internal Credits: 17</p> <p>External Credits: 0</p> <p>Level of Credits: 1</p> <p>Leads to: 12 Physical Activity & Leisure Studies 12 Outdoor Education</p>	<p>Course Information:</p> <p>This course is designed to align with vocational pathways in the Community Services Sector and lead onto the Level 3 PAL course. Students will gain essential knowledge and skills needed to work in the Sports and Recreation industry.</p> <p>Internal Assessments: AS91330 Practical performance AS91332 Evaluate leadership US21791 Human anatomy and movement US21794 Static stretching US21793 Correct technique gym equipment</p> <p>Endorseable: No</p> <p>Internal Credits: 17</p> <p>External Credits: 0</p> <p>Level of Credits: 2</p> <p>Leads to: 13 Physical Activity & Leisure Studies</p>	<p>Course Information</p> <p>This course is designed to align with vocational pathways in the Community Services Sector. The focus within this sector is the Sports and Recreation Industry.</p> <p>Students who complete this course will exit with skills in:</p> <ul style="list-style-type: none"> • Effective communication • Leading small groups through sport and recreation based activities • Applying theory to practice in sport and fitness based activities • Working as an effective team member <p>Standards will be selected from:</p> <p>Internal Assessments: AS91501 Practical performance US24663 ABL Leadership US30933 Demonstrate exercise and stretching techniques US30935 Develop and implement a plan for personal fitness</p> <p>Endorseable: No</p> <p>Internal Credits: Approximately 17</p> <p>External Credits: 0</p> <p>Level of Credits: 3</p>

OUTDOOR EDUCATION

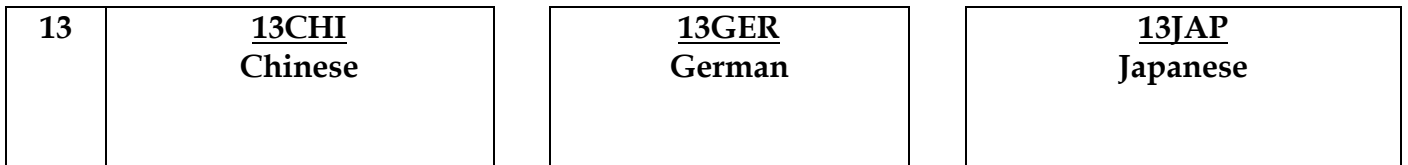
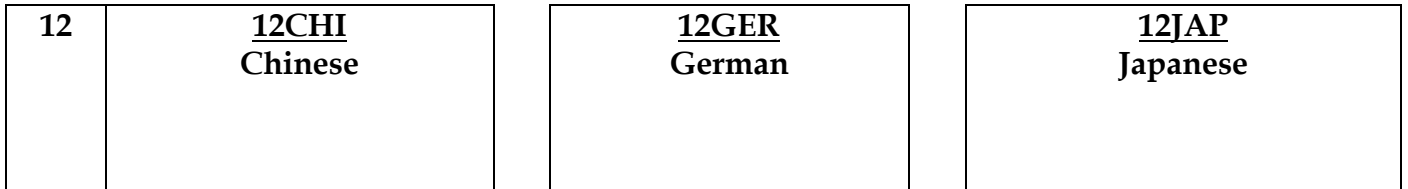
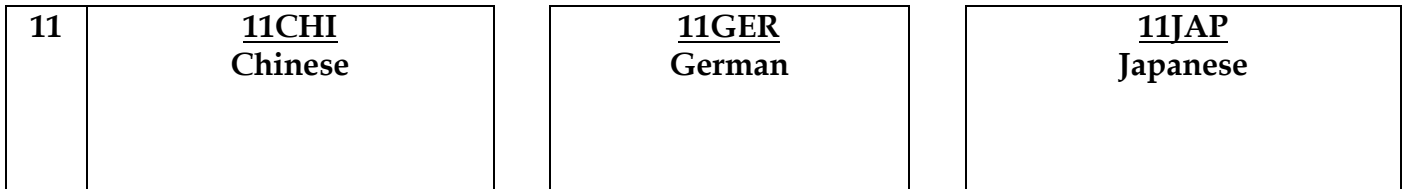
Ms Wilson - Physical Education Office / Sports Hall

Year 12 Outdoor Education [12OED]	Year 13 Outdoor Education [13OED]	
<p>Prerequisites:</p> <p>Teacher recommendation based on attitude, effort and attendance. Numbers are limited.</p>	<p>Prerequisites:</p> <p>14 credits at 12OED including practical kayaking credits, OR 14 credits at 12PED, OR HOF approval based on attitude, effort and attendance. Numbers are limited.</p>	
<p>Course Information:</p> <p>This course is designed to introduce students to Outdoor Education and provide students with experiences that are both new and exciting. Students will be theoretically and practically challenged in a wide range of outdoor contexts. Course content includes Kayaking, Tramping, Camping, Rock-climbing and weather interpretation.</p> <p>Students suitable for this course will be motivated and willing to challenge themselves.</p> <p>Internal Assessments: US425 Tramping US444 Rock climbing AS91333 Risk management AS91330 Performance rock climbing AS91332 Leadership strategies US20159 Weather interpretation US32848 Kayaking</p> <p>Field Trip Costs: are heavily subsidised. However, students can voluntarily contribute to the cost of one or both of the multi-night trips. Tawharanui trip approximately \$100.</p> <p>Endorseable: No</p> <p>Internal Credits: 18</p> <p>External Credits: 0</p> <p>Level of Credits: 2</p> <p>Leads to: 13 Outdoor Education</p>	<p>Course Information:</p> <p>Level 3 Outdoor Education is designed as a progression from Level 2 Outdoor Education. Students will build on their previous knowledge and experiences in the outdoors while gaining recognised outdoor skills.</p> <p>The course builds towards a multi-night experience in a remote, wilderness area snow camp journey.</p> <p>Suitable students for this course will be physically fit, motivated and willing to challenge themselves in a range of outdoor environments.</p> <p>Internal Assessments: US28570 Kaitiakitanga US3285 Leadership AS91789 Devise strategies for physical activity outcome AS91501 Quality performance AS91504 Safety management issues</p> <p>Field Trip Costs: are heavily subsidised. However, students can voluntarily contribute to the cost of one or both of the multi-night trips. Snow camp approximately \$250.</p> <p>Endorseable: No</p> <p>Internal Credits: 19</p> <p>External Credits: 0</p> <p>Level of Credits: 3</p>	

LANGUAGE COURSE PATHWAYS



* *Those students who wish to study a language which they did not study in Year 9 must seek permission from the relevant HOF/TIC before submitting option preferences.*



CHINESE

Miss Hsiao - Room C10

Year 11 Chinese [11CHI]	Year 12 Chinese [12CHI]	Year 13 Chinese [13CHI]
<p>Prerequisites:</p> <p>Year 10 Chinese or in consultation with the HOF/TIC. Students need to have displayed an understanding and competency in the four language skills of reading, writing, speaking and listening in Year 10 Chinese.</p>	<p>Prerequisites:</p> <p>14 Credits in NCEA Level 1 Chinese or in consultation with the relevant HOF/TIC.</p>	<p>Prerequisites:</p> <p>14 Credits in NCEA Level 2 Chinese or in consultation with the relevant HOF/TIC.</p>
<p>Course Information:</p> <p>This course is a year program which aims to continue developing student's Chinese language skills of speaking, listening, reading and writing to communicate in everyday contexts.</p> <p>In this course students are expected to engage with, make meaning of short text types, explore language used to express personal information, ideas and opinions. Students will increase cultural competence and global awareness. They will also develop ideas of understanding structure in thinking and gaining effective communication skills by increasing understanding of successful learning methods.</p> <p>Internal Assessments: AS91952 Interact in spoken Chinese to share and respond to information, ideas and opinions AS91953 Communicate in Chinese for a chosen purpose</p> <p>External Assessments: AS91954 Demonstrate understanding of written Chinese related to contexts AS91955 Demonstrate understanding of spoken Chinese relate to contexts</p> <p>Endorseable: Yes</p> <p>Internal Credits: 10 (TBC)</p> <p>External Credits: 10 (TBC)</p> <p>Level of Credits: 1</p> <p>Leads to: 12 Chinese</p>	<p>Course Information:</p> <p>This is an intermediate course of Chinese building on the knowledge of language learned from NCEA Level One.</p> <p>Students can use language variably and effectively to express and justify their own ideas and opinions and support or challenge those of others. They are able to use and identify the linguistic and cultural forms that guide interpretation and enable them to respond critically to texts.</p> <p>You are expected to learn how to recognise up to 600 characters.</p> <p>Internal Assessments: AS91109 Interaction portfolio OR / AND AS91110 Presentation AND / OR AS91112 Writing portfolio</p> <p>External Assessments: AS91108 Listening AS91111 Reading</p> <p>Endorseable: Yes</p> <p>Internal Credits: 9 or 10</p> <p>External Credits: 10</p> <p>Level of Credits: 2</p> <p>Leads to: 13 Chinese</p>	<p>Course Information:</p> <p>This is an advanced course consolidating and extending the Chinese language skills learned in NCEA Level Two.</p> <p>Students can use language variably and effectively to express and justify their own ideas and opinions and support or challenge those of others. They are able to use and identify the linguistic and cultural forms that guide interpretation and enable them to respond critically to texts.</p> <p>You are able to recognise up to 800 or more characters.</p> <p>Internal Assessments: AS91534 Presentation OR / AND AS91535 Interaction portfolio AND / OR AS91537 Writing portfolio</p> <p>External Assessments: AS91533 Listening AS91536 Reading</p> <p>Endorseable: Yes</p> <p>Internal Credits: 8 or 11</p> <p>External Credits: 10</p> <p>Level of Credits: 3</p> <p>University Entrance Approved Examinable by Scholarship</p>

GERMAN

Mrs Scheffer Cosslett - Room C12

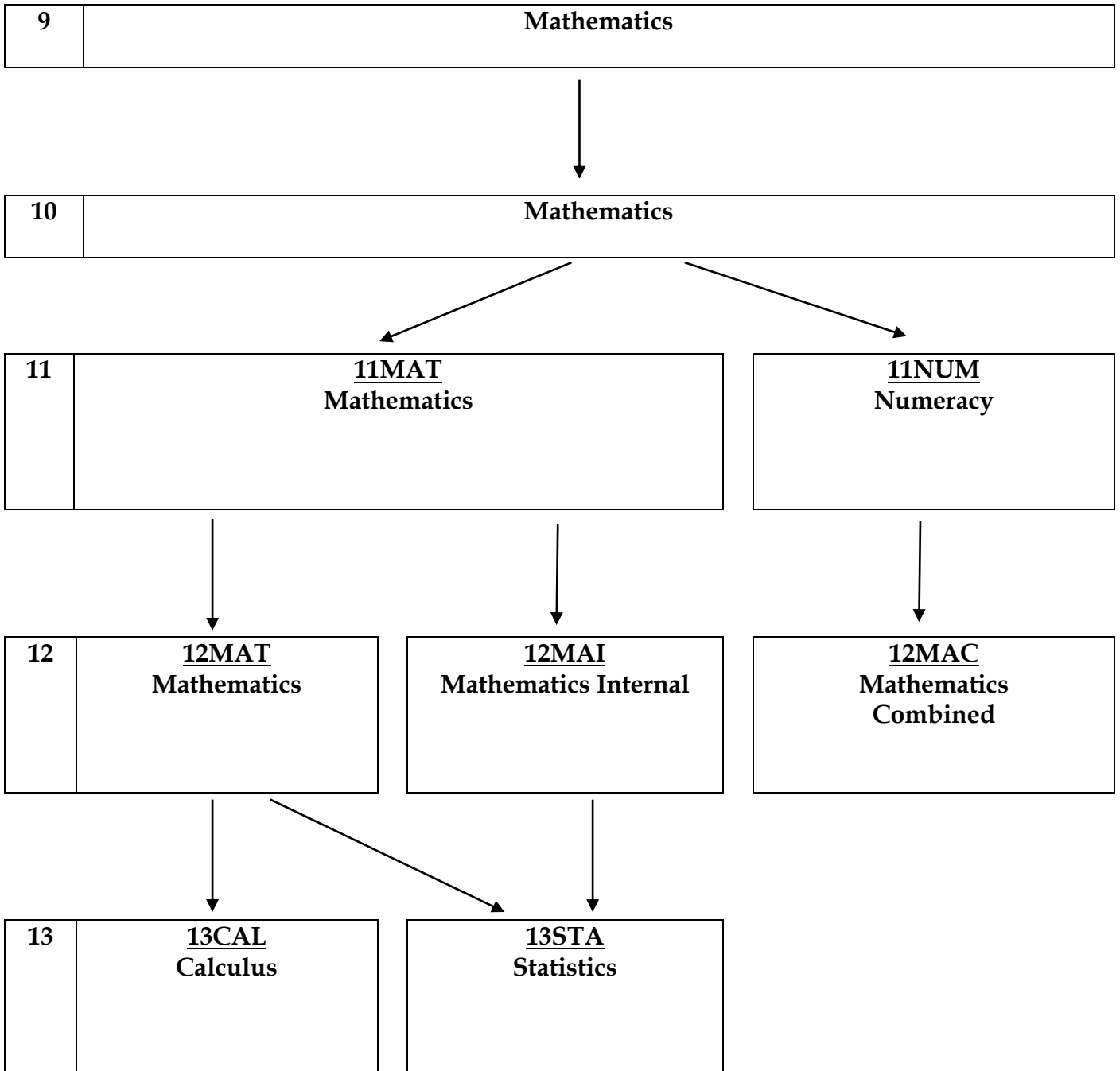
Year 11 German [11GER]	Year 12 German [12GER]	Year 13 German [13GER]
<p>Prerequisites:</p> <p>Year 10 German or in consultation with TIC or HOF. Students need to have displayed an understanding and competency in the four language skills of reading, writing, speaking and listening in Year 10 German.</p>	<p>Prerequisites:</p> <p>Year 11 German or in consultation with TIC or HOF. Additionally, a minimum of 14 credits gained in Level 1 German or in consultation with TIC.</p>	<p>Prerequisites:</p> <p>Year 12 German or after consultation with TIC or HOF. Additionally, a minimum of 14 credits must have been gained in Level 2 German.</p>
<p>Course Information:</p> <p>This course is a year program which aims to continue developing students German language skills of speaking, listening, reading and writing to communicate in everyday contexts.</p> <p>In this course, students are expected to engage with, make meaning of short text types and explore language used to express personal information, ideas and opinions. Students will also further develop their cross-cultural understanding and competence in using appropriate features of languages in everyday communication.</p> <p>Internal Assessments (To be confirmed): AS91968 Interact in spoken German to share and respond to information AS91969 Communicate in German for a chosen purpose</p> <p>External Assessments (To be confirmed): AS91970 Demonstrate understanding of written German related to contexts AS91971 Demonstrate understanding of spoken German related to contexts</p> <p>Endorseable: Yes</p> <p>Internal Credits: 10 (TBC)</p> <p>External Credits: 10 (TBC)</p> <p>Level of Credits: 1</p> <p>Leads to: 12 German</p>	<p>Course Information:</p> <p>This course is designed to develop on from the structures and vocabulary covered in NCEA Level 1. Students will be challenged to further develop the macro skills of speaking and listening with specific emphasis on conversational German.</p> <p>There are four Achievement standards available in this course – two are internally assessed and the other two are externally assessed.</p> <p>Internal Assessments: AS91124 Interaction portfolio OR / AND AS91125 Presentation AND / OR AS91127 Writing portfolio</p> <p>External Assessments: AS91123 Listening AS91127 Reading</p> <p>Endorseable: Yes</p> <p>Internal Credits: 9 or 10</p> <p>External Credits: 10</p> <p>Level of Credits: 2</p> <p>Leads to: 13 German</p>	<p>Course Information:</p> <p>This is an advanced course best suited to those who have completed studying the beginners' level of the German language. The course continues to extend the students' vocabulary and grammatical structures for communicating in German and prepare students for the Level 3 examination at the end of the year.</p> <p>There are four Achievement standards available in this course – two are internally assessed and the other two are externally assessed.</p> <p>Internal Assessments: AS91550 Interaction portfolio OR / AND AS91549 Presentation AND / OR AS91552 Writing portfolio</p> <p>External Assessments: AS91548 Listening AS92551 Reading</p> <p>Endorseable: Yes</p> <p>Internal Credits: 8 or 11</p> <p>External Credits: 10</p> <p>Level of Credits: 3</p> <p>University Entrance Approved Examinable by Scholarship</p>

JAPANESE

Ms M Chiba - Room C11

Year 11 Japanese [11JAP]	Year 12 Japanese [12JAP]	Year 13 Japanese[13JAP]
<p>Prerequisites:</p> <p>Year 10 Japanese or in consultation with TIC or HOF. Students need to have displayed an understanding and competency in the four language skills of reading, writing, speaking and listening in Year 10 Japanese.</p>	<p>Prerequisites:</p> <p>Year 11 Japanese or in consultation with TIC or HOF. Additionally, a minimum of 14 credits gained in Level 1 Japanese or in consultation with TIC.</p>	<p>Prerequisites:</p> <p>Year 12 Japanese or after consultation with TIC or HOF. Additionally, a minimum of 14 credits must have been gained in Level 2 Japanese.</p>
<p>Course Information:</p> <p>This course is a year program which aims to continue developing student's Chinese language skills of speaking, listening, reading and writing to communicate in everyday contexts.</p> <p>In this course students are expected to engage with, make meaning of short text types and explore language used to express personal information, ideas and opinions. Students will increase cultural competence and global awareness. They will also develop ideas of understanding structure in thinking and gaining effective communication skills by increasing understanding of successful learning methods.</p> <p>Internal Assessments: AS91956 Interact in spoken Japanese to share and respond to information, ideas and opinions AS91957 Communicate in Japanese for a chosen purpose</p> <p>External Assessments: AS91958 Demonstrate understanding of written Japanese related to contexts AS91959 Demonstrate understanding of spoken Japanese relate to contexts</p> <p>Endorseable: Yes</p> <p>Internal Credits: 10 (TBC)</p> <p>External Credits: 10 (TBC)</p> <p>Level of Credits: 1</p> <p>Leads to: 12 Japanese</p>	<p>Course Information:</p> <p>This course is designed to build on the structures and vocabulary covered in Level 1 Japanese.</p> <p>Students will also be challenged to further develop their speaking and listening skills with a focus on natural, conversational Japanese. Greater emphasis is also placed on learning more Kanji.</p> <p>There are 4 Achievement standards available in this course - two are internally assessed and the other two are externally assessed.</p> <p>Internal Assessments: AS91135 Presentation AND AS91137 Writing portfolio</p> <p>External Assessments: AS91133 Listening AS91136 Reading</p> <p>Endorseable: Yes</p> <p>Internal Credits: 9</p> <p>External Credits: 10</p> <p>Level of Credits: 2</p> <p>Leads to: 13 Japanese</p>	<p>Course Information:</p> <p>This is an advanced course.</p> <p>This course continues to extend the students' working knowledge of vocabulary, Kanji and grammatical structures, coupled with more advanced speaking and listening skills. This course prepares students to further their study at University.</p> <p>There are 4 Achievement standards available in this course - two are internally assessed and the other two are externally assessed.</p> <p>Internal Assessments: AS91554 Presentation AND AS91557 Writing portfolio</p> <p>External Assessments: AS91553 Listening AS91556 Reading</p> <p>Endorseable: Yes</p> <p>Internal Credits: 8</p> <p>External Credits: 10</p> <p>Level of Credits: 3</p> <p>University Entrance Approved Examinable by Scholarship</p>

MATHEMATICS COURSE PATHWAYS



MATHEMATICS

Mr Stanton - Room C2

<p align="center">Year 11 Mathematics [11MAT]</p>	<p align="center">Year 11 Numeracy [11NUM]</p>	
<p>Prerequisites:</p> <p>Pass Numeracy in Year 10 and/or be working at or above Mathematics Curriculum 5</p>	<p>Prerequisites:</p> <p>Gains at least 2 A's out of 6 topics in the Level 5 topic tests or end-of-year examination or HOF's discretion.</p>	
<p>Course Information:</p> <p>This course is for those students intending to continue Mathematics to Level 2 and 3.</p> <p>There are three Achievement Standards available in this course - two are internally assessed and one is externally assessed.</p> <p>Internal Assessments: AS91944 Explore data using a statistical enquiry process AS91945 Use mathematical methods that explore problems that relate to life in Aotearoa New Zealand or the Pacific.</p> <p>External Assessments: AS91947 Demonstrate mathematical reasoning</p> <p>Course Materials: Workbook provided Casio FX82AU+II Scientific calculator</p> <p>Endorseable: Yes</p> <p>Internal Credits: 10</p> <p>External Credits: 5</p> <p>Level of Credits: 1</p> <p>Leads to: 12MAT or 12MAI</p>	<p>Course Information:</p> <p>This course is for those students who have not gained Numeracy.</p> <p>Numeracy Assessments: 32046 Use mathematics and statistics to meet the numeracy demands of a range of situations.</p> <p>Course Materials: Workbook provided Casio FX82AU+II Scientific calculator</p> <p>Endorseable: No</p> <p>Numeracy Credits: 10</p> <p>External Credits: 0</p> <p>Level of Credits: 1</p> <p>Leads to: 12MAC</p>	

MATHEMATICS

Mr Stanton - Room C2

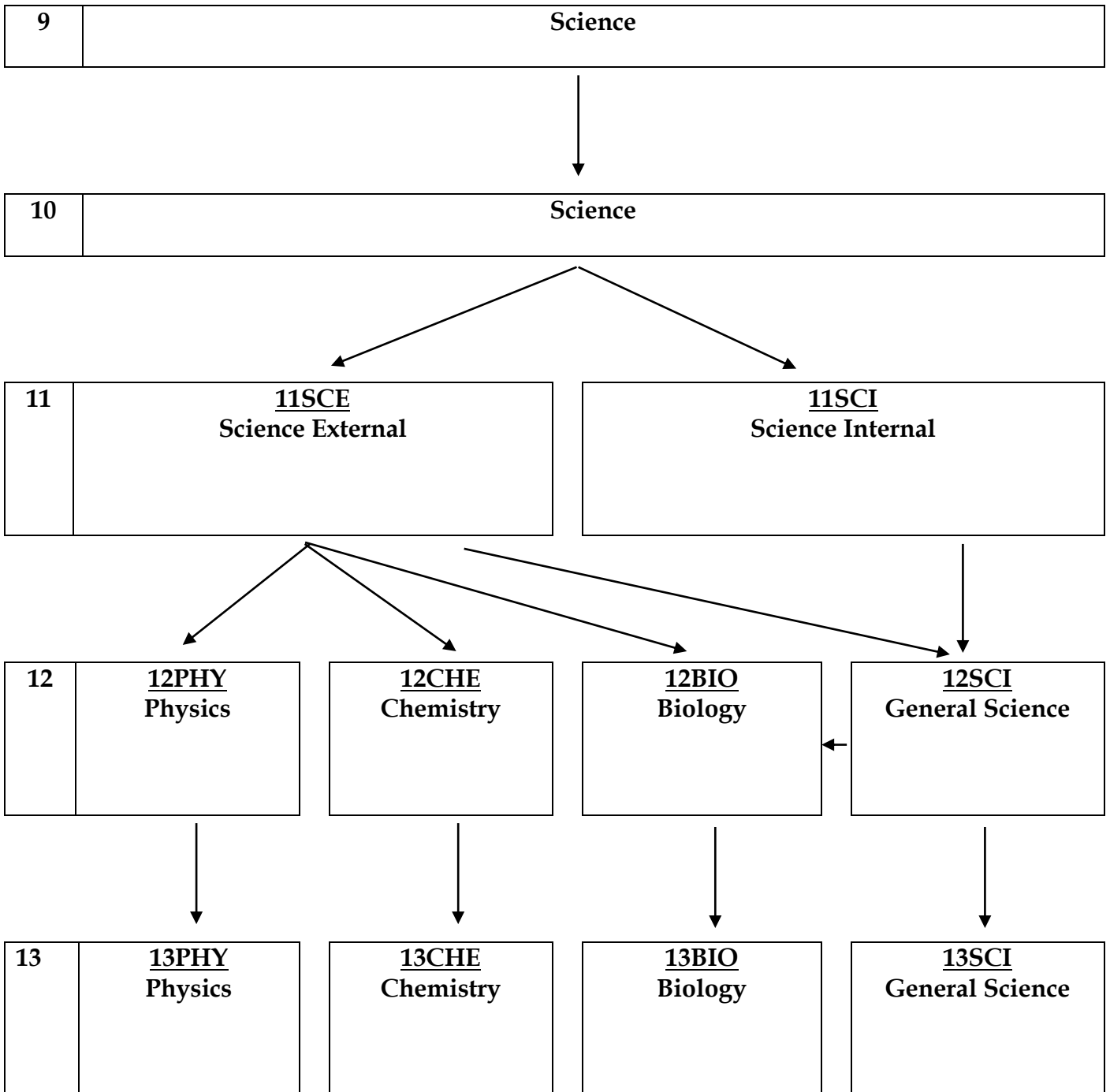
Year 12 Mathematics [12MAT]	Year 12 Mathematics Internal [12MAI]	Year 12 Mathematics Combined [12MAC]
<p>Prerequisites:</p> <p>At least 15 Mathematics Level 1 credits from Achievement Standards (including AS91027) or HOF's discretion.</p>	<p>Prerequisites:</p> <p>At least 12 Mathematics Level 1 credits from Achievement Standards or HOF's discretion.</p>	<p>Prerequisites:</p> <p>None.</p>
<p>Course Information:</p> <p>A Mathematics course whose content is that prescribed for Mathematics at Level 2.</p> <p>This course consists of six Level 2 Achievement Standards, three of which are internally assessed and three are externally assessed.</p> <p>This course is designed to cater for those who wish to study Calculus and/or Statistics at NCEA Level 3.</p> <p>Internal Assessments: AS91259 - Trigonometry AS91257 - Graphs</p> <p>External Assessments: AS91261 - Algebra AS91262 - Calculus AS91267 - Probability</p> <p>Course Materials: Workbook provided Casio FX9750GII Graphic calculator</p> <p>Endorseable: Yes</p> <p>Internal Credits: 7</p> <p>External Credits: 13</p> <p>Total Credits: 20</p> <p>Level of Credits: 2</p> <p>Leads to: 13CAL and/or 13STA</p>	<p>Course Information:</p> <p>A Mathematics course whose content is that prescribed for Mathematics at Level 2.</p> <p>This course consists of seven Level 2 Achievement Standards, six of which are internally assessed and one externally assessed.</p> <p>This course is not designed for students to lead on to Calculus but could lead to Statistics following a very good performance during the year.</p> <p>Internal Assessments: AS91259 - Trigonometry AS91256 - Co-ordinates AS91264 - Statistics AS91258 - Sequences AS91260 - Networks AS91268 - Simulations</p> <p>External Assessment: AS91267 - Probability</p> <p>Course Materials: Workbook provided Casio FX9750GII Graphic calculator</p> <p>Endorseable: Yes</p> <p>Internal Credits: 15</p> <p>External Credits: 4</p> <p>Total Credits: 19</p> <p>Level of Credits: 2</p> <p>Leads to: 13STA</p>	<p>Course Information:</p> <p>A Mathematics course for those students who have not achieved the pre-requisite for 12MAT or 12MAI (have gained less than 12 Mathematics Level 1 credits).</p> <p>This course includes Level 1 Achievement Standards and Level 2 Achievement Standards.</p> <p>Internal Assessments: AS91034 - Transformations AS91036 - Bivariate Data AS91259 - Trigonometry AS91258 - Sequences AS91256 - Co-ordinates AS91260 - Networks</p> <p>Course Materials: Workbook provided Casio FX82AU+II Scientific calculator</p> <p>Endorseable: No</p> <p>Internal Credits: 5 at Level 1 9 at Level 2</p> <p>External Credits: 0</p> <p>Total Credits: 14</p> <p>Level of Credits: 1 and 2</p>

MATHEMATICS

Mr Stanton - Room C2

<p align="center">Year 13 Statistics [13STA]</p>	<p align="center">Year 13 Calculus [13CAL]</p>	
<p>Prerequisites:</p> <p>15 credits from NCEA Level 2 Mathematics or HOF's discretion.</p>	<p>Prerequisites:</p> <p>15 credits from NCEA Level 2 Mathematics (including AS91261 and AS91262) or HOF's discretion.</p>	
<p>Course Information:</p> <p>The course consists of five Achievement Standards, three of which are internally assessed and the other two are externally assessed.</p> <p>It is recommended by the University of Auckland that students intending to study Biological, Environmental and Health or Human Sciences and/or Mathematical and Information Sciences complete this course. This course may be taken in conjunction with 13CAL.</p> <p>Internal Assessments: AS91580 - Time Series AS91581 - Bivariate Data AS91582 - Inferencing</p> <p>External Assessments: AS91585 - Probability AS91586 - Distributions</p> <p>Course Materials: Workbook provided Casio FX9750GII Graphic calculator</p> <p>Endorseable: Yes</p> <p>Internal Credits: 12</p> <p>External Credits: 8</p> <p>Total Credits: 20</p> <p>Level of Credits: 3</p> <p>University Entrance Approved Examinable by Scholarship</p>	<p>Course Information:</p> <p>The course consists of four Achievement Standards, one of which is internally assessed and the other three are externally assessed.</p> <p>It is recommended by the University of Auckland that students intending to study Physical Sciences and/or Mathematical and Information Sciences complete this course.</p> <p>Internal Assessments: AS91575 - Trigonometry</p> <p>External Assessments: AS91577 - Algebra AS91578 - Differentiation AS91579 - Integration</p> <p>Course Materials: Workbook provided Casio FX9750GII Graphic calculator</p> <p>Endorseable: Yes</p> <p>Internal Credits: 4</p> <p>External Credits: 17</p> <p>Total Credits: 21</p> <p>Level of Credits: 3</p> <p>University Entrance Approved Examinable by Scholarship</p>	

SCIENCE COURSE PATHWAYS



SCIENCE

Mr Thomas - Room 69

Year 11 Science 101 [11SCE]	Year 11 Science 102 [11SCI]	
Prerequisites: Averaging Achieved or higher in Yr10 Science tests and EOY exam, or at HOF discretion.	Prerequisites: None	
Course Information: This course provides a broad coverage of topics from all Science areas and builds the understanding needed to continue to Level 2 courses in Biology, Chemistry, Physics and General Science. The focus is on external assessment, with one internal assessment enabling course endorsement. Internal Assessments: AS92045 Physics practical External Assessments: AS92022 Genetic variation AS92023 Chemical properties Endorseable: Yes Internal Credits: 5 External Credits: 9 Level of Credits: 1 Leads to: 12 General Science 12 Chemistry 12 Physics 12 Biology	Course Information: This course provides a broad coverage of topics from all Science areas and assists students to make sense of the world around them, relating their knowledge to everyday experiences. The focus is on internal assessment, with one external assessment enabling course endorsement. Internal Assessments: Two internal assessments, specific standards to be confirmed External Assessments: One external assessment, specific standard to be confirmed Endorseable: Yes Internal Credits: TBC External Credits: TBC Level of Credits: 1 Leads to: 12 General Science	

GENERAL SCIENCE

Mr Cartwright - Room 52

	Year 12 General Science [12SCI]	Year 13 General Science [13SCI]
	<p>Prerequisites:</p> <p>From 11SCA - 14 Internal credits and attempted the External Assessment. From 11SCI + 11PHY - 14 credits, including attempted the External Assessment. OR with permission of HOF/TIC.</p>	<p>Prerequisites:</p> <p>14 credits from 12SCI, 12BIO, 12CHE or 12PHY (including having attempted the External Assessment).</p>
	<p>Course Information:</p> <p>This is mainly an internally assessed course which allows students to gain credits at A, M and E. There is an external assessment at the end of the course, making the subject endorseable. Topics are taken from Biology, Chemistry, Physics and Earth and Space Science.</p> <p>Internal Assessments: AS91162 Identifying ions in solution AS91168 Physics investigation AS91172 Atomic and nuclear physics AS91189 Geological processes in NZ AS91190 Extreme environment (optional)</p> <p>External Assessments: AS91191 Extreme earth events</p> <p>Endorseable: Yes</p> <p>Internal Credits: 14 (+ 3 optional credits)</p> <p>External Credits: 4</p> <p>Level of Credits: 2</p> <p>Leads to: 13 General Science</p>	<p>Course Information:</p> <p>An internally and externally assessed course, studying UE standards. The External Assessments make the course endorseable. The course is a UE approved subject with a focus on Earth and Space Science.</p> <p>The course is suitable for students who are motivated to complete independent research and present their findings. Good time-management and organisational skills are required.</p> <p>Internal Assessments: AS91411 Socio-scientific issue in Earth and Space Science * R/W AS91389 Chemical processes(Opt) * R/W (TBC) AS91412 Date a geological event AS91415 Investigate an aspect of Astronomy * R</p> <p>External Assessments: AS91413 Ocean system * R/W AS91414 Atmosphere systems * R/W</p> <p>Endorseable: Yes</p> <p>Internal Credits: 12 (+ 3 optional credits)</p> <p>External Credits: 8</p> <p>Level of Credits: 3</p>

BIOLOGY

Mrs Goulding - Room 36

	Year 12 Biology [12BIO]	Year 13 Biology [13BIO]
	<p>Prerequisites:</p> <p>14 credits or better in Science Level 1 including AS90948 (Biology) or at HOF discretion.</p>	<p>Prerequisites:</p> <p>14 credits or better in NCEA Level 2 Biology or at HOF discretion.</p>
	<p>Course Information:</p> <p>This course is designed to give full coverage of the Biology Curriculum at Level 7.</p> <p>It aims to provide a foundation for the future study of Biology at Level 8.</p> <p>Internal Assessments: AS91158 Ecological patterns AS91153 Practical investigation AS91155 Animal adaptations</p> <p>External Assessments: AS91157 Genetic variation AS91159 Gene expression</p> <p>Endorseable: Yes</p> <p>Internal Credits: 11</p> <p>External Credits: 8</p> <p>Level of Credits: 2</p> <p>Leads to: 13 Biology 13 Science</p>	<p>Course Information:</p> <p>This course is designed to give full coverage of the Biology Curriculum at Level 8.</p> <p>It aims to provide a foundation for the future study of Biology at tertiary level.</p> <p>Internal Assessments: AS91601 Practical investigation AS91604 Human homeostasis * R AS91602 Socio-Scientific issue</p> <p>External Assessments: AS91603 Plants and animals * R/W AS91606 Human evolution * R/W</p> <p>Endorseable: Yes</p> <p>Internal Credits: 10</p> <p>External Credits: 9</p> <p>Level of Credits: 3</p> <p>University Entrance Approved Examinable by Scholarship</p>

CHEMISTRY

Mr Wade - Room 56

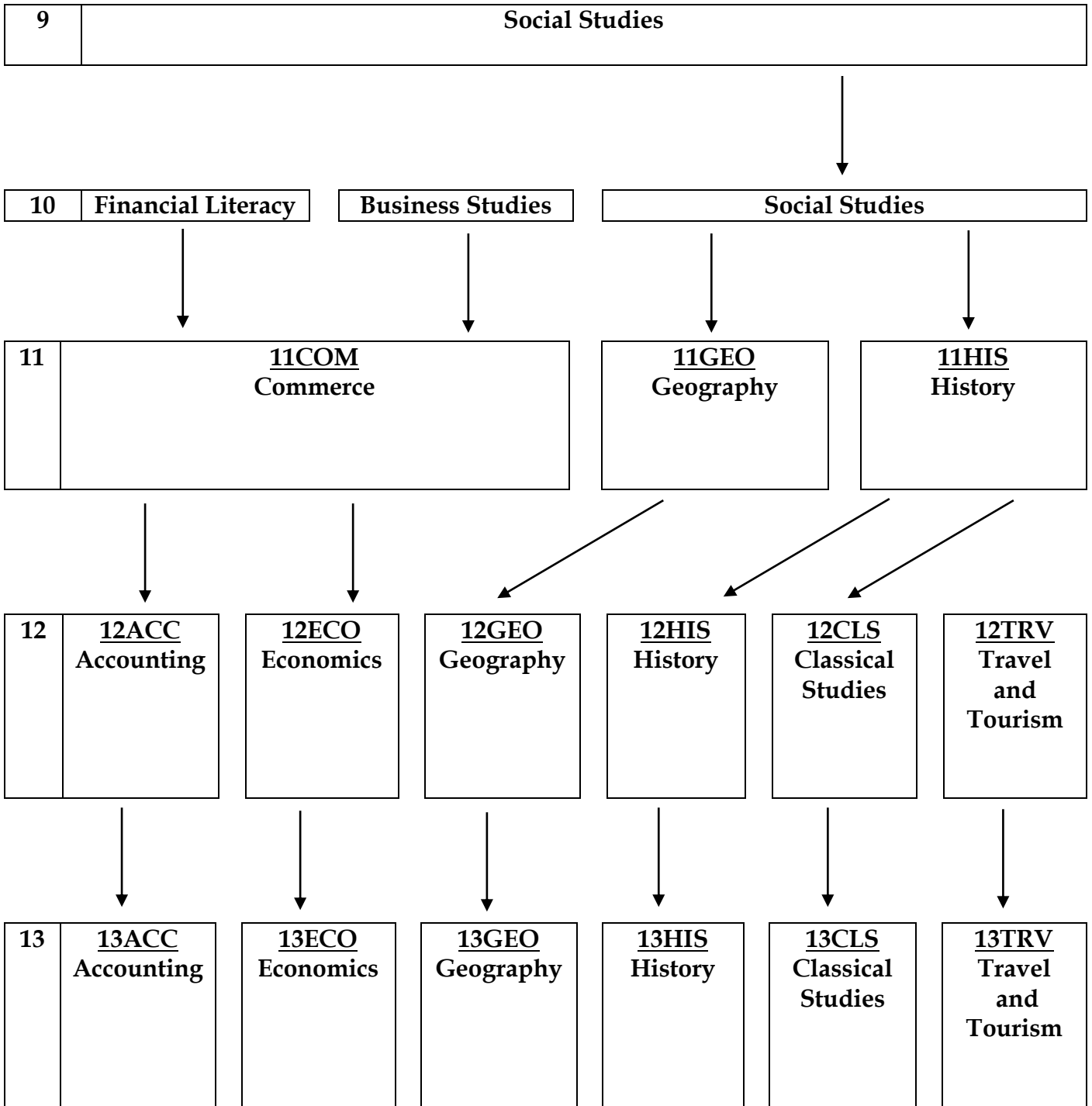
	Year 12 Chemistry [12CHE]	Year 13 Chemistry [13CHE]
	Prerequisites: 2 External standards passed at level 1 Science (must include Achievement Standard 1.5) or 14 credits from Level 1 Alternative Science plus Achievement Standard 1.5.	Prerequisites: 2 out of 3 External standards passed at Level 2 Chemistry.
	Course Information: This course follows the national curriculum for Chemistry, preparing students for Level 3 Chemistry. It provides a broad foundation for future studies in any of the Science areas. Topics covered include: The nature of bonding, structure and energy changes. The properties of organic compounds. Chemical reactivity. Carrying out titration investigations. Carrying out Redox investigations. Internal Assessments: AS91167 Redox AS91910 Titrations External Assessments: AS91164 Structure and Thermochem AS91165 Organic AS91166 Reactivity Endorseable: Yes Internal Credits: 7 External Credits: 13 Level of Credits: 2 Leads to: 13 Chemistry	Course Information: This course builds on and extends the knowledge and practical skills gained in the Level 2 Chemistry course. This is an academic course that prepares students for tertiary education. This course involves both theory work and a significant amount of practical laboratory work. Internal Assessments: AS91388 Spectroscopy AS91393 Redox External Assessments: AS91390 Structure and energy AS91391 Organic AS91392 Aqueous systems Endorseable: Yes Internal Credits: 6 External Credits: 15 Level of Credits: 3 University Entrance Approved Examinable by Scholarship

PHYSICS

Mr Thomas - Room 69

	Year 12 Physics [12PHY]	Year 13 Physics [13PHY]
	Prerequisites: 14 credits or better in Science Level 1 including 90940 (Mechanics) or at HOF discretion.	Prerequisites: 14 credits or better in NCEA Level 2 Physics including Mechanics or electricity or at HOF discretion.
	Course Information: The course follows the Year 12 Physics syllabus, including <ul style="list-style-type: none"> • Light and Waves • Electricity • Mechanics • Nuclear radioactivity This is an academic course; and as such, students have very high expectations placed upon them. Homework is essential. Internal Assessments: AS91168 Practical skills AS91172 Atomic and Nuclear External Assessments: AS91170 Light and Waves (optional standard) AS91171 Mechanics AS91173 Electricity and magnetism Endorseable: Yes Internal Credits: 7 External Credits: 12 (+ 4 optional) Level of Credits: 2 Leads to: 13 Physics 13 Science	Course Information: The course follows the Year 13 Physics syllabus, including <ul style="list-style-type: none"> • Mechanics • Waves • Electricity • Nuclear The course builds on Year 12 Physics. It will also prepare students for Scholarship- should they wish to sit. 14 credits or more in 13PHY will set students up for ANY degree option or career opportunity- Physics is held in very high regard with employers. Internal Assessments: AS91521 Practical skills AS91525 Atomic and Nuclear External Assessments: AS91523 Light and waves AS91534 Mechanics AS91536 Electricity and magnetism Endorseable: Yes Internal Credits: 7 External Credits: 16 Level of Credits: 3 University Entrance Approved Examinable by Scholarship

SOCIAL SCIENCES COURSE PATHWAYS



COMMERCE / ACCOUNTING

Ms Balogh - Room 61

Year 11 Commerce [11COM]	Year 12 Accounting [12ACC]	Year 13 Accounting [13ACC]
Prerequisites: None	Prerequisites: 10 Credits Year 11 Accounting or in consultation with the HOF.	Prerequisites: 12 Credits NCEA Accounting Level 2 or 18 credits at Excellence Level 1.
Course Information: The basic principles taught in Accounting, Economics and Business Studies are consolidated to provide students with foundational learning in these subjects. Concepts taught include the use of 'models' eg supply and demand, financial statements and more. There is a focus on decision-making and problem solving, the sustainable use of scarce resources and interdependence. Internal Assessments: AS92028 Demonstrate understanding of an organisation's financial decision making AS92029 Demonstrate understanding of price determination for an organisation External Assessments: AS92030 TBC OR AS92031 TBC Endorseable: Yes Internal Credits: 10 External Credits: 5 or 10 Level of Credits: 1 Leads to: 12 Accounting	Course Information: It is essential to have studied accounting at Year 11 level. The emphasis of the Level 2 course is on subsystems as part of the accounting process. The students will be able to analyse the appropriate systems including the necessary internal control procedures and carry out the accounting entries as part of the accounting process. Internal Assessments: AS91179 Accounts Receivable AS91175 XERO Processing AS91386 Inventory External Assessments: AS91176 Reporting Endorseable: Yes Internal Credits: 14 External Credits: 5 Level of Credits: 2 Leads to: 13 Accounting	Course Information: The prescription focuses on accounting for partnerships and companies and manufacturing with emphasis being placed on preparation of, analysis, interpretation of final reports and decision making. This level introduces a more academic approach with the introduction of the requirements of the accounting profession. Students who wish to enter AS90500 (3.1) 4 credits and/or scholarship may do so if they attend extra classes in their own time. Internal Assessments: AS91405 Partnerships - Processing AS91409 Job costing subsystems External Assessments: AS91406 Companies - Reporting AS91408 Demonstrate understanding of management accounting to inform decision making Endorseable: Yes Internal Credits: 8 External Credits: 9 Level of Credits: 3 University Entrance Approved Examinable by Scholarship

COMMERCE / ECONOMICS

Dr Pavin Masilamani - Room 60 or Ms Balogh - Room 61

Year 11 Commerce [11COM]	Year 12 Economics [12ECO]	Year 13 Economics [13ECO]
<p>Prerequisites:</p> <p>None</p>	<p>Prerequisites:</p> <p>14 Credits in Year 11 Mathematics and English, or Year 11 Economics or in consultation with HOF.</p>	<p>Prerequisites:</p> <p>14 Credits in Level 2 Economics or 14 Credits in Level 2 English plus 14 credits in Level 2 Mathematics or in consultation with HOF.</p>
<p>Course Information:</p> <p>The basic principles taught in Accounting, Economics and Business Studies are consolidated to provide students with foundational learning in these subjects. Concepts taught include the use of 'models' eg supply and demand, financial statements and more. There is a focus on decision-making and problem solving, the sustainable use of scarce resources and interdependence.</p> <p>Internal Assessments: AS92028 Demonstrate understanding of an organisation's financial decision making AS92029 Demonstrate understanding of price determination for an organisation</p> <p>External Assessments: AS92030 TBC OR AS92031 TBC</p> <p>Endorseable: Yes</p> <p>Internal Credits: 10</p> <p>External Credits: 4 or 10</p> <p>Level of Credits: 1</p> <p>Leads to: 12 Economics</p>	<p>Course Information:</p> <p>This course will give students a useful insight into issues that affect all New Zealanders - employment, inflation, growth, trade and inequality.</p> <p>These issues are studied within the discipline of economics. Assessment requires students to keep a watchful eye on current events affecting these issues.</p> <p>Internal Assessments: AS91225 Unemployment * R AS91226 Statistical Data</p> <p>External Assessments: AS91222 Inflation AS91223 International Trade AS91224 Growth</p> <p>Endorseable: Yes</p> <p>Internal Credits: 8</p> <p>External Credits: 12</p> <p>Level of Credits: 2</p> <p>Leads to: 13 Economics</p>	<p>Course Information:</p> <p>This course is divided into three main sections: resource allocation via the market system; resource allocation via the public sector (government) and aggregate economic activity and policy.</p> <p>Graphs are used widely throughout the course to illustrate economic ideas, along with student research.</p> <p>Internal Assessments: AS91401 Micro-economics * R</p> <p>External Assessments: AS91399 Market Equilibrium * R/W AS91400 Marginal Analysis * R/W AS91403 Macro-economics * R/W</p> <p>Endorseable: Yes</p> <p>Internal Credits: 5</p> <p>External Credits: 14</p> <p>Level of Credits: 3</p> <p>University Entrance Approved Examinable by Scholarship</p>

CLASSICAL STUDIES

Mr White – Room S5

	Year 12 Classical Studies [12CLS]	Year 13 Classical Studies [13CLS]
	Prerequisites: None	Prerequisites: None
	<p>Course Information:</p> <p>Classical Studies is the study of the civilisations of classical Greece and Rome through disciplines such as History, Literature, Art and Philosophy.</p> <p>Topics include:</p> <ul style="list-style-type: none"> • Social and political life of ancient Rome • Homer’s Odyssey <p>Internal Assessments: AS91202 Ancient Culture * R AS91204 Significant event * R</p> <p>External Assessments: AS91200 Ideas and values * R/W AS91203 Socio-political life * R/W</p> <p>Endorseable: Yes</p> <p>Internal Credits: 10</p> <p>External Credits: 10</p> <p>Level of Credits: 2</p> <p>Leads to: 13 Classical Studies 13 History</p>	<p>Course Information:</p> <p>The Classical Studies course covers the Art, Philosophy, History and Literature of the Classical World, recognised to be the basis of western civilisation.</p> <p>Topics include:</p> <ul style="list-style-type: none"> • Alexander the Great, Augustus, Julius Caesar • Roman Art and Architecture <p>Internal Assessments: AS91397 Ideologies * R AS91398 Cultures across time * R</p> <p>External Assessments: AS91394 Ideas and Values *R/W AS91396 Historical figure * R/W</p> <p>Endorseable: Yes</p> <p>Internal Credits: 10</p> <p>External Credits: 14</p> <p>Level of Credits: 3</p> <p>University Entrance Approved Examinable by Scholarship</p>

GEOGRAPHY

Miss J Millington - Room 38

Year 11 Geography [11GEO]	Year 12 Geography [12GEO]	Year 13 Geography [13GEO]
Prerequisites: None required.	Prerequisites: 14 credits in Level 1 Geography or with the approval of the HOF.	Prerequisites: 14 credits in Level 2 Geography or with the approval of the HOF.
<p>Course Information:</p> <p>This course builds on the skills and knowledge gained in Social Studies. Students will study the relationship between people and their environment both locally and globally. Decision making and who has the power to decide will also be studied. Case studies will be used from around the world and geographic skills will be integrated throughout the course.</p> <p>A field trip exploring Mount Mangere and the Auckland Museum are a key component of the course.</p> <p>Internal Assessments: AS91932 Demonstrate understanding of the spatial distribution of phenomena within an environment AS91933 Use data to understand an environment</p> <p>External Assessments: AS91934 Demonstrate understanding of how aspects of natural processes shape an environment OR AS91935 Demonstrate understanding of decision making to respond to a geographic challenge in Aotearoa NZ or the Pacific</p> <p>Field Trip Costs:</p> <p>Endorseable: Yes</p> <p>Internal Credits: 10</p> <p>External Credits: 5</p> <p>Level of Credits: 1</p> <p>Leads to: 12 Geography</p>	<p>Course Information:</p> <p>Year 12 Geography involves analysis and research of the natural landscape of the Tongariro Volcanic Centre in the central North Island. Studies of the cultural environment involve the exploration of the local and global geographic patterns of crime and the use of 1080 in NZ.</p> <p>Two field trips investigating natural processes in the Tongariro Volcanic Centre and urban crime in Auckland are key components of the course.</p> <p>Geographic skills ranging from map work to graphing are incorporated into topics throughout the year.</p> <p>Internal Assessments: AS91241 Urban Pattern AS91244 Geographic Research AS91246 Global Pattern</p> <p>External Assessments: AS91240 Natural Environment * R AS91243 Geographic skills</p> <p>Field Trip Costs: \$350</p> <p>Endorseable: Yes</p> <p>Internal Credits: 11</p> <p>External Credits: 8</p> <p>Level of Credits: 2</p> <p>Leads to: 13 Geography</p>	<p>Course Information:</p> <p>Year 13 Geography involves the analysis of the cultural process of tourism and research in a selected natural environment. Studies of the cultural environment explore the geographic issue of human trafficking and the global pattern of impacts and use of coral reefs. A field trip to Rotorua supports the study of tourism as a cultural process.</p> <p>A three day trip to Rotorua is a key component of the course.</p> <p>Geographic skills ranging from map work to graphing are incorporated into topics throughout the year.</p> <p>Internal Assessments: AS91428 Contemporary Event * R AS91431 Geographic Issue * R AS91432 Global Pattern * R</p> <p>External Assessments: AS91427 Tourism Development * R/W AS91429 Geographic Skills * R/W</p> <p>Field Trip Costs: \$500 (estimate)</p> <p>Endorseable: Yes</p> <p>Internal Credits: 11</p> <p>External Credits: 8</p> <p>Level of Credits: 3</p> <p>University Entrance Approved Examinable by Scholarship</p>

HISTORY

Mr Collier - Room S8

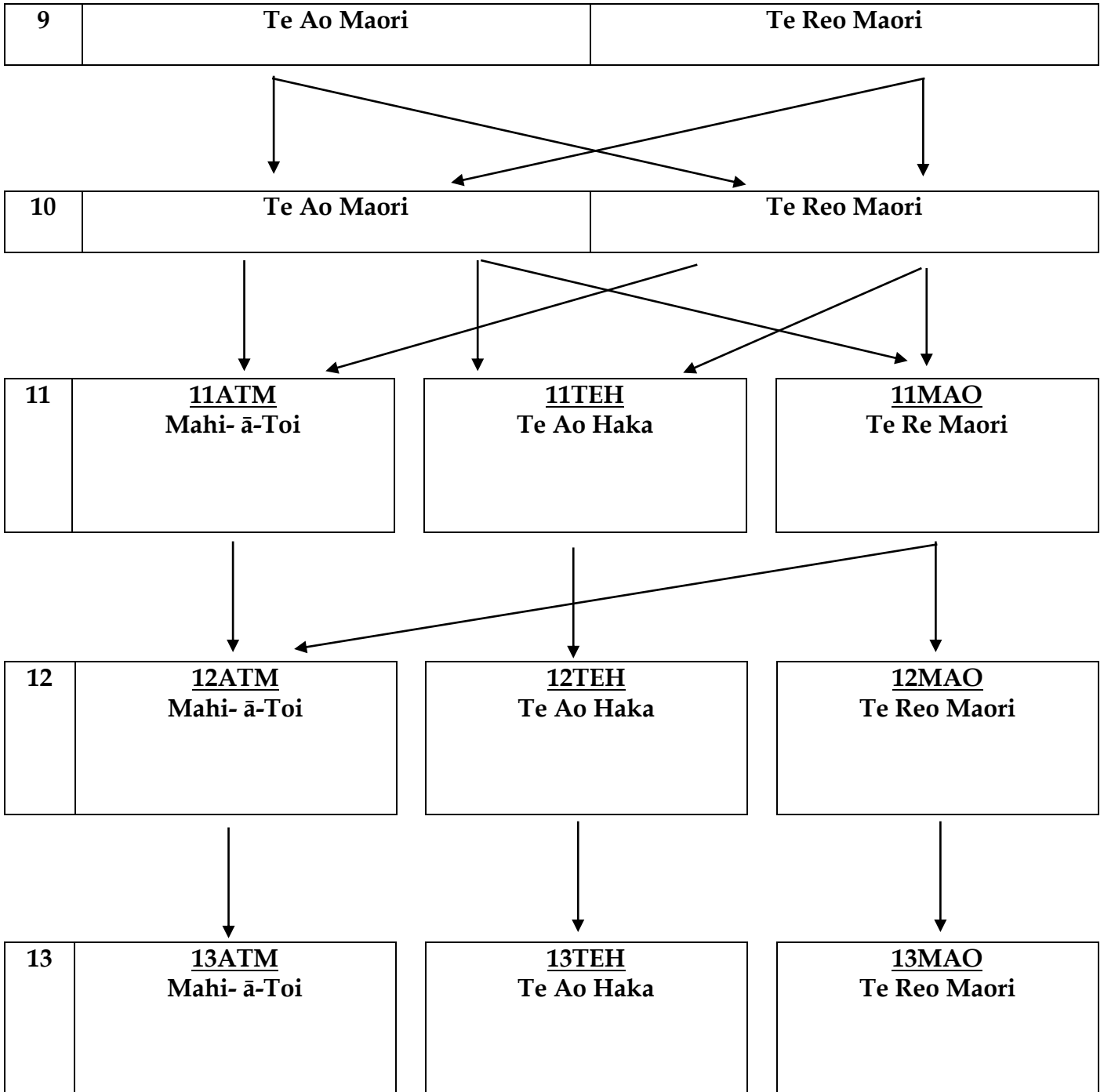
Year 11 History [11HIS]	Year 12 History [12HIS]	Year 13 History [13HIS]
Prerequisites: None	Prerequisites: 16 Credits in Year 11 History or with the approval of the HOF.	Prerequisites: 16 Credits in Year 12 History or with the approval of the HOF.
<p>Course Information:</p> <p>The Year 11 History course has three major components.</p> <p>Term One deals with New Zealand History in the 1970's and 80's, and covers events such as the Maori Land March, Bastion Point, the Springbok Tour and the Rainbow Warrior bombing</p> <p>Term Two covers Black Civil Rights in the USA and Term Three deals with two major historical events; the Atomic Bombing of Hiroshima and the Holocaust, and explores the views surrounding them.</p> <p>Internal Assessments: AS92024 Engage with a variety of primary sources in a historical context AS92025 (Literacy approved) Demonstrate understanding of the significance of a historical context</p> <p>External Assessments: AS92027 (Literacy approved) Demonstrate understanding of perspectives on a historical context</p> <p>Endorseable: Yes</p> <p>Internal Credits: 10</p> <p>External Credits: 5</p> <p>Level of Credits: 1</p> <p>Leads to: 12 History 12 Classical Studies</p>	<p>Course Information:</p> <p>Year 12 builds on skills and understanding gained in Year 11, although Year 11 History is not an essential prerequisite.</p> <p>Students can choose from a wide range of topics for their internal assessment research projects.</p> <p>Topics studied are:</p> <ul style="list-style-type: none"> ❖ Vietnam War ❖ The Russian Revolution <p>Internal Assessments: AS91229 Carry out an inquiry * R AS91230 Examine an event * R AS91232 Perspectives * R</p> <p>External Assessments: AS91231 Examine sources * R/W AS91233 Causes/consequences*R/W</p> <p>Endorseable: Yes</p> <p>Internal Credits: 14</p> <p>External Credits: 9</p> <p>Level of Credits: 2</p> <p>Leads to: 13 History 13 Classical Studies</p>	<p>Course Information:</p> <p>Year 13 History builds on the historical skills and understanding gained in Years 11 and/or 12. However, students can successfully complete this course without a history background.</p> <p>Students focus on a topic of their choice for their internal assessment research project. Any topic is possible in consultation with their History teacher. The course also covers different perspectives on the Treaty of Waitangi and in Term Three the Causes and Consequences of NAZI Germany. The latter topic is assessed by essay in the end of year exam.</p> <p>Year 13 History incorporates a field trip.</p> <p>Internal Assessments: AS91434 Research * R AS91435 Analyse * R AS91437 Perspectives * R</p> <p>External Assessments: AS91436 Analyse evidence * R/W AS91438 Causes/consequences*R/W</p> <p>Endorseable: Yes</p> <p>Internal Credits: 15</p> <p>External Credits: 10</p> <p>Level of Credits: 3</p> <p>University Entrance Approved Examinable by Scholarship</p>

TRAVEL AND TOURISM

Mr White - Room S5

	Year 12 Travel and Tourism [12TRV]	Year 13 Travel and Tourism [13TRV]
	Prerequisites: Level 1 Literacy and Level 1 Numeracy or at discretion of the TIC.	Prerequisites: Level 2 Travel or at discretion of TIC.
	Course Information: The course covers Level Two Unit Standards in New Zealand tourism. Students will gain a range of new skills and information in the tourism industry, which is one of the fastest growing industries in New Zealand. There will be 1 or 2 day trips to tourism attractions in Auckland during the year. Students may also be invited on an overnight trip to Rotorua. This course is internally assessed. Internal Assessments: US23761 Reading in the tourism workplace US24727 Describe and compare impacts of tourism on the physical environment US24728 Work roles in tourism US24729 World tourist destinations US24730 Knowledge of tourism business US24731 Destination New Zealand US24732 Characteristics of tourism	Course Information: The course covers knowledge of New Zealand, Australia and the Pacific Islands as travel destinations including key geographical features, attractions, activities, transport and accommodation services. There will be 1 or 2 day trips to tourism attractions in Auckland during the year. Students may also be invited on an overnight trip to Rotorua. This course is internally assessed. Internal Assessments: US18212 NZ as a tourist destination US24733 Describe and promote NZ US28211 Destination Australia US3717 Destination South Pacific
	Field Trip Costs: Nil Endorseable: No Internal Credits: 24 External Credits: 0 Level of Credits: 2 Leads to: 13 Travel and Tourism	Field Trip Costs: Nil Endorseable: No Internal Credits: 23 External Credits: 0 Level of Credits: 3

TE AO MAORI COURSE PATHWAYS



TE AO HAKA

Matua Jeff, Whaea Stacey, Matua Paratene - Marae

Year 11 Te Ao Haka [11TEH]	Year 12 Te Ao Haka [12TEH]	Year 13 Te Ao Haka [13TEH]
Prerequisites: Year 9 and 10 Te Ao Māori/Te Reo Māori or by special permission from the Head of Te Ao Māori.	Prerequisites: 10 Credits from Year 112 Te Ao Māori or by special permission from the Head of Te Ao Māori.	Prerequisites: 10 Credits from Year 12 Te Ao Māori or by special permission from the Head of Te Ao Māori.
<p>Course Information:</p> <p>This course will provide students with a common understanding of the knowledge, skills, attributes and attitudes associated within Te Ao Māori and Māori Performing Arts. Learning ranges from Waiata, mōteatea, haka, poi, waiata-ā-ringa and mau rākau.</p> <p>These are the foundation skills for their journey if they wish to move through to Level 2 and 3 Te Ao Haka. Mahi done throughout the year will be assessed with two internal assessments and two external assessments.</p> <p>This class is also a UE approved subject.</p> <p>“He Māori ahau, e noho Māori nei ki tōku Ao Māori. Mā runga i tēnā ka Tōhea e au.”</p> <p>Internal Assessments: AS91976 Demonstrate understanding of key features of Te Ao Haka AS91977 Perform an item from a Te Ao Haka discipline</p> <p>External Assessments: AS91978 Demonstrate understanding of categories within a Te Ao Haka discipline AS91979 Demonstrate understanding of elements within a Te Ao Haka performance</p> <p>Endorseable: Yes</p> <p>Internal Credits: 12</p> <p>External Credits: 8</p> <p>Level of Credits: 1</p> <p>Leads to: 12 Te Ao Haka Leads to: 12 Te Reo Māori</p>	<p>Course Information:</p> <p>This course will provide students with a common understanding of the knowledge, skills, attributes and attitudes associated within Te Ao Māori and Māori Performing Arts. Learning ranges from Waiata, mōteatea, haka, poi, waiata-ā-ringa and mau rākau.</p> <p>These are the foundation skills for their journey if they wish to move through to Level 3 Te Ao Haka. Mahi done throughout the year will be assessed with two internal assessments and two external assessments.</p> <p>This class is also a UE approved subject.</p> <p>“He Māori ahau, e noho Māori nei ki tōku Ao Māori. Mā runga i tēnā ka Tōhea e au.”</p> <p>Internal Assessments: AS91980 Explore elements to create a section of a Te Ao Haka item AS91981 Perform a Te Ao Haka item to respond to a local kaupapa</p> <p>External Assessments: AS91982 Compare a Te Ao Haka performance and one other performance AS91983 Respond to a Te Ao Haka performance</p> <p>Endorseable: Yes</p> <p>Internal Credits: 12</p> <p>External Credits: 8</p> <p>Level of Credits: 2</p> <p>Leads to: 13 Te Ao Haka</p>	<p>Course Information:</p> <p>This course will provide students with a common understanding of the knowledge, skills, attributes and attitudes associated within Te Ao Māori and Māori Performing Arts. Learning ranges from Waiata, mōteatea, haka, poi, waiata-ā-ringa and mau rākau.</p> <p>These are the foundation skills for their journey if they wish to move into Te Ao Haka and Te Ao Maori in the future. Mahi done throughout the year will be assessed with two internal assessments and two external assessments.</p> <p>This class is also a UE approved subject.</p> <p>“He Māori ahau, e noho Māori nei ki tōku Ao Māori. Mā runga i tēnā ka Tōhea e au.”</p> <p>Internal Assessments: AS91984 Reflect on a personal learning journey in a discipline of Te Ao Haka AS91985 Perform three categories within a discipline of Te Ao Haka</p> <p>External Assessments: AS91986 Perform two Te Ao Haka disciplines AS91987 Demonstrate understanding of a key role within Te Ao Haka</p> <p>Endorseable: Yes</p> <p>Internal Credits: 12</p> <p>External Credits: 8</p> <p>Level of Credits: 3</p>

TE REO MĀORI

Matua Jeff, Whaea Stacey, Matua Paratene - Marae

<p align="center">Year 11 Te Reo Māori [11MĀO]</p>	<p align="center">Year 12 Te Reo Māori [12MĀO]</p>	<p align="center">Year 13 Te Reo Māori [13MĀO]</p>
<p>Prerequisites:</p> <p>Year 9 and 10 Te Ao Māori/Te Reo Māori or by special permission from the Head of Te Ao Māori.</p>	<p>Prerequisites:</p> <p>10 credits at Level 1 Te Reo Māori or by special permission from the Head of Te Ao Māori.</p>	<p>Prerequisites:</p> <p>10 credits at Level 2 Te Reo Māori or by special permission from the Head of Te Ao Māori.</p>
<p>Course Information:</p> <p>The aim of this course is to enable the students to grow in their ability to understand Te Reo Māori and build their confidence to speak Te Reo Māori.</p> <p>There is an emphasis on using and understanding spoken and written Māori as a language of communication and interaction</p> <p>“He Māori ahau, e noho Māori nei ki tōku Ao Māori. Mā runga i tēnā ka tōhea e au.”</p> <p>Internal Assessments: AS92092 Presentation/Writing AS92093 Presentation/Writing</p> <p>External Assessments: AS92094 Listening/Reading AS92095 Presentation/Writing Portfolio</p> <p>Endorseable: Yes</p> <p>Internal Credits: 10</p> <p>External Credits: 10</p> <p>Level of Credits: 1</p> <p>Leads to: 12 Māori</p>	<p>Course Information:</p> <p>The aim of this course is to enable the students to grow in their ability to understand Te Reo Māori and build their confidence to speak Te Reo Māori.</p> <p>This course emphasises the use and understanding of spoken and written Māori as a language of communication in every social and cultural situation. It will focus on the structure of the language, vocabulary appropriate to various contexts, as well as figures of speech such as colloquialisms.</p> <p>“He Māori ahau, e noho Māori nei ki tōku Ao Māori. Mā runga i tēnā ka tōhea e au.”</p> <p>Internal Assessments: AS91285 Presentation AS91288 Writing portfolio * W</p> <p>External Assessments: AS91286 Reading * R AS91287 Writing * W</p> <p>Endorseable: Yes</p> <p>Internal Credits: 12</p> <p>External Credits: 12</p> <p>Level of Credits: 2</p> <p>Leads to: 13 Māori</p>	<p>Course Information:</p> <p>The aim of this course is to enable the students to grow in their ability to understand Te Reo Māori and build their confidence to speak Te Reo Māori.</p> <p>This course explores topics that include iwi history, tikanga and the ongoing revitalisation of Te Reo Māori me ona tikanga. The subject also emphasises using and understanding spoken and written Maori as a language of teaching, communication and interaction.</p> <p>“He Māori ahau, e noho Māori nei ki tōku Ao Māori. Mā runga i tēnā ka tōhea e au.”</p> <p>Internal Assessments: AS91651 Presentation AS91654 Writing portfolio * W</p> <p>External Assessments: AS91652 Reading * R AS91653 Writing * W</p> <p>Endorseable: Yes</p> <p>Internal Credits: 12</p> <p>External Credits: 12</p> <p>Level of Credits: 3</p> <p>University Entrance Approved Examinable by Scholarship There are opportunities for students to undertake te reo Māori papers from the University of Waikato.</p>

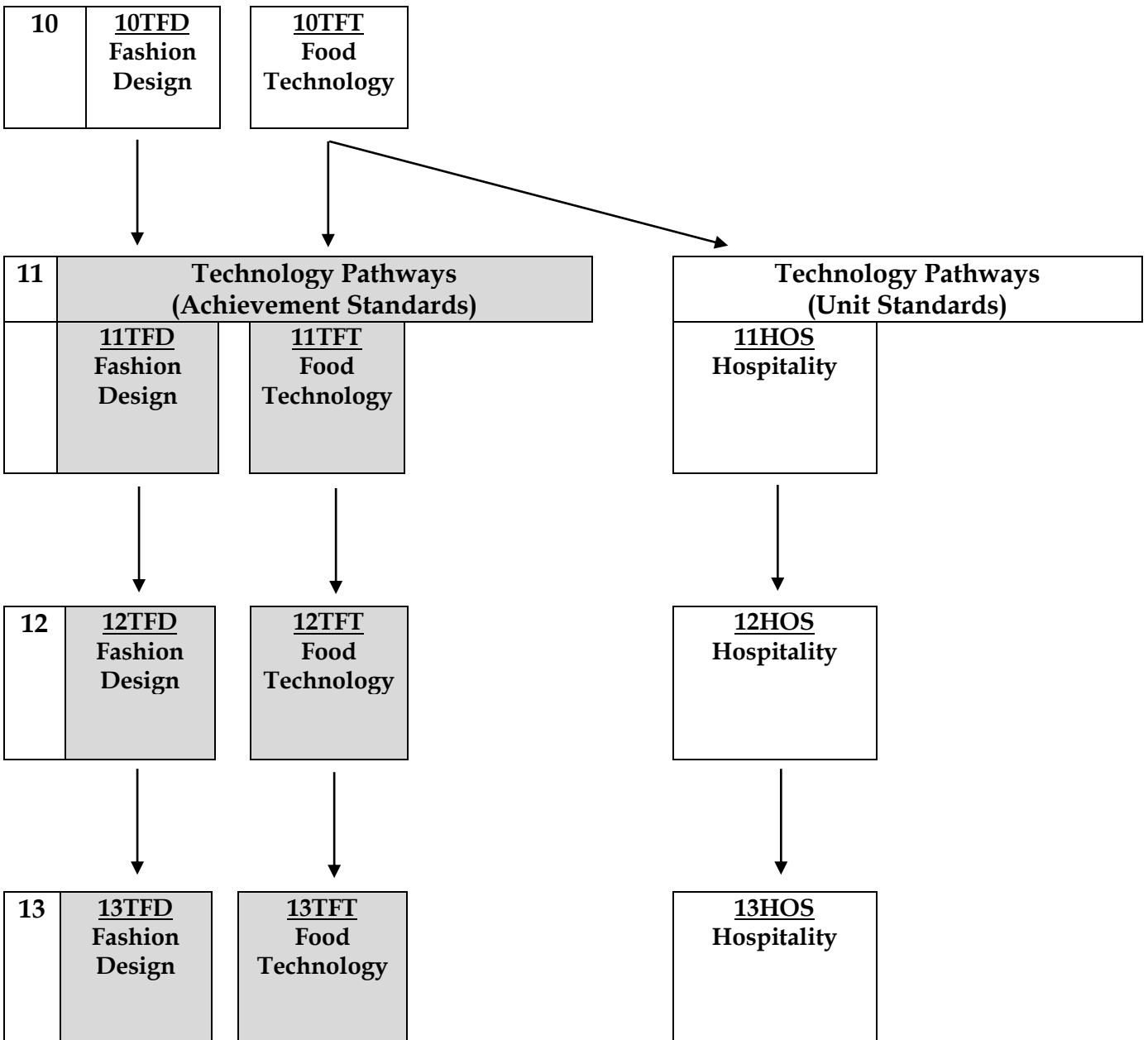
MAHI-Ā-TOI ACADEMY

Matua Jeff, Matua Paratene - Marae/Whare Whakairo

<p align="center">Year 11 Mahi-ā-Toi [11ATM]</p>	<p align="center">Year 12 Mahi-ā-Toi [12ATM]</p>	<p align="center">Year 13 Mahi-ā-Toi [13ATM]</p>
<p>Prerequisites: Year 9 and 10 Te Ao Maori/Te Reo Maori or by special permission from the Head of Te Ao Māori and also an interview.</p>	<p>Prerequisites: 10 Credits from Year 12 Mahi-ā-Toi or by special permission from the Head of Te Ao Māori and also an interview.</p>	<p>Prerequisites: 10 Credits from Year 12 Mahi-ā-Toi.</p>
<p>Course Information:</p> <p>This course will provide students with a common entry level understanding of the knowledge, skills, attributes and attitudes associated within Māori Arts.</p> <p>Learning ranges from Kowhaiwhai Whakairo Rāranga and Kapa Haka.</p> <p>These are the foundation skills for their journey if they wish to move through to the Level 2 and Level 3 Mahi-ā-Toi.</p> <p>Mahi done throughout the year will be assessed by internal assessment submissions.</p> <p>Internal Assessments: US23005 Knowledge of carving US23006 Knowledge of meaning in carving US23007 Knowledge of carving US23008 Describe carved images/objects</p> <p>Endorseable: No</p> <p>Internal Credits: 20</p> <p>External Credits: 0</p> <p>Level of Credits: 1</p>	<p>Course Information:</p> <p>In this course students will be aiming for Level 2 credits towards NCEA, Creative Industries Endorsement.</p> <p>Mahi done throughout the year will be assessed by internal assessment submissions.</p> <p>In Level 2 Mahi-ā-Toi academy, students will analyse factors that influence the quality of individual performance in applied settings. Students complete units based on Toi Maori which covers Kapa Haka, Whakairo, Korero and Kowhaiwhai. Students apply advanced theory and apply their learning in practical settings.</p> <p>A component of Mahi-ā-Toi is committing to a 10 week programme at Unitec, gaining experience in a Tertiary environment.</p> <p>Another component is to commit to a week long trip to the Awatere on the east coast to gain work experience as an iwi carver.</p> <p>Internal Assessments: AS91310 Visual arts AS91315 Visual arts AS91325 Visual arts US23009 Te Tauira Whakairo US23010 Te Tauira Whakairo US23011 Te Tauira Whakairo US23012 Te Tauira Whakairo</p> <p>Endorseable: No</p> <p>Internal Credits: 30+</p> <p>External Credits: 0</p> <p>Level of Credits: 2</p>	<p>Course Information:</p> <p>In Level 3 Mahi-ā-Toi academy, students will analyse factors that influence the quality of individual performance in applied settings. Students complete units based on Toi Maori which covers Kapa Haka, Whakairo, Korero and Kowhaiwhai. Students apply advanced theory and apply their learning in practical settings.</p> <p>A component of Mahi-ā-Toi is committing to a 20 week programme at Unitec, gaining experience in a Tertiary environment.</p> <p>Another component is to commit to a week long trip to the Awatere on the east coast to gain work experience as an iwi carver.</p> <p>Internal Assessments: AS91445 Visual arts AS91450 Visual arts AS91455 Visual arts US23013 Te Tauira Whakairo US23014 Te Tauira Whakairo US23015 Te Tauira Whakairo US23016 Te Tauira Whakairo</p> <p>Endorseable: No</p> <p>Internal Credits: 30+</p> <p>External Credits: 0</p> <p>Level of Credits: 3</p>

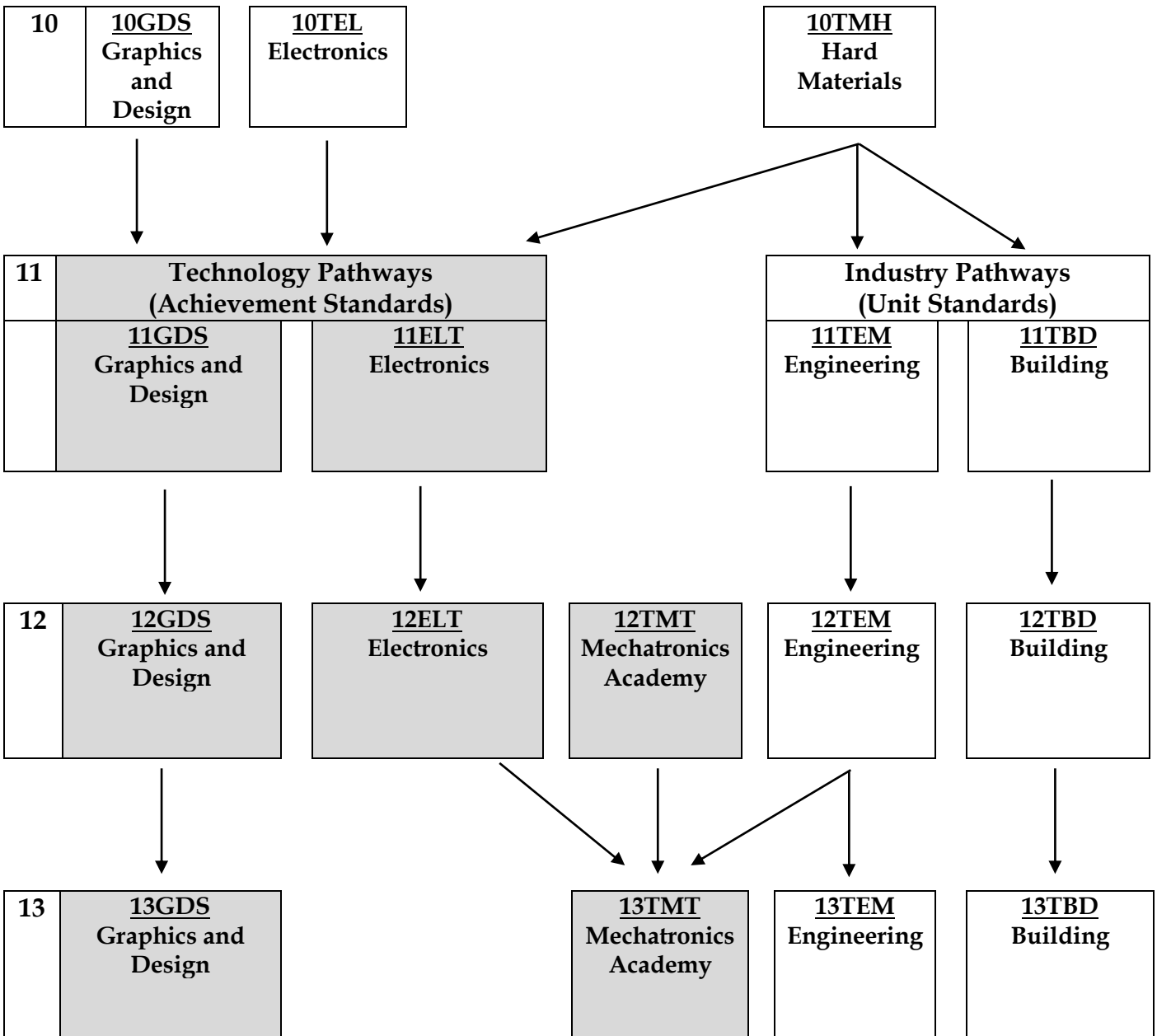
TECHNOLOGY COURSE PATHWAYS

9	Year 9 Technology [9TFT, 9TMS]
---	-----------------------------------



TECHNOLOGY COURSE PATHWAYS

9	Year 9 Technology [9TMH]
---	-----------------------------



BUILDING AND FURNITURE

Mr Dodds - Room 75

Year 11 Building [11TBD]	Year 12 Building [12TBD]	Year 13 Building [13TBD]
Prerequisites: Demonstrate safe work practices in Year 10 or with HOF approval.	Prerequisites: Demonstrate safe work practices in Technology and have gained 12 credits in Level 1 Building or with HOF approval.	Prerequisites: Demonstrate safe work practices in Technology and have gained 12 credits in Level 2 Building or with HOF approval.
<p>Course Information:</p> <p>Students will undertake a course of study based on BCITO Unit Standards.</p> <p>Year 11TBD is a skill based subject where the students will be taught traditional hand skills associated with cabinetry work. The key task for the year is to make a radiata pine bedside cabinet.</p> <p>This course is a pre-requisite to Year 12 Building from which the students can be selected for the Gateway Industrial Training Course.</p> <p>Internal Assessments: US24355 Material in BCATS projects US24352 Safe working practices US24356 Processes for BCATS projects US25919 Hardware and fastenings US25920 Joints for BCATS projects</p> <p>Course Cost: \$90</p> <p>Endorseable: No</p> <p>Internal Credits: 19</p> <p>External Credits: 0</p> <p>Level of Credits: 1</p> <p>Leads to: 12 Building</p>	<p>Course Information:</p> <p>Students will undertake a course of study based on BCITO and FITEC Unit Standards.</p> <p>Year 12TBD builds on the skills learnt in Year 11. Students at this level will be expected to work more independently, effectively manage their time by planning and monitoring the construction of their project and use a variety of portable power tools. The key project for the year is a mahogany coffee table with a built-in tray.</p> <p>Successful students will gain credits towards NCEA Level 2 and the Vocational Pathways; Manufacturing and Technology plus Construction and Infrastructure.</p> <p>Internal Assessments: US18917 Construct hand joints US2199 Use and maintain hand tools US16232 Use basic portable hand tools US18918 Construct a furniture carcass US24358 Plan and monitor the construction of a BCATS project and quality check the product</p> <p>Course Cost: \$90</p> <p>Endorseable: No</p> <p>Internal Credits: 20</p> <p>External Credits: 0</p> <p>Level of Credits: 2</p> <p>Leads to: 13 Building</p>	<p>Course Information:</p> <p>Students will undertake a course of study based on BCITO Unit Standards.</p> <p>Students will be expected to demonstrate a higher level of independence than Level 2. Students will select, use and apply appropriate tools and techniques and then plan, monitor and document their progress throughout the construction of their mahogany chair.</p> <p>Successful students must complete key stages of the chair as well as planning documentation in order to gain credits towards NCEA Level 3 and the Vocational Pathways; Manufacturing and Technology and Construction and Infrastructure.</p> <p>Internal Assessments: US29679 Develop and use BCATS project documentation for a Stage 3 BCATS project US29684 Undertake a Level 3 BCATS project US29682 Select, use and maintain tools, equipment and machinery for a stage 3 BCATS project.</p> <p>Course Cost: \$100</p> <p>Endorseable: No</p> <p>Internal Credits: 24</p> <p>External Credits: 0</p> <p>Level of Credits: 3</p>

ELECTRONICS

Mr Dempsey - Room 73

Year 11 Electronics [11ELT]	Year 12 Electronics [12ELT]	
Prerequisites: Due to the nature of the Electronics theory, students should be taking either Year 11MAT or MAI. Year 10 Electronics advantageous.	Prerequisites: 12 Credits in Year 11 Electronics or 12 Credits in Level 1 Mathematics and Science or by approval of the TIC	
<p>Course Information:</p> <p>Year 11 Electronics and Control Tech is a course developed from both the Materials and Processes and Digital Technology Curriculums.</p> <p>The course follows on from Year 10 to build knowledge of basic electrical concepts and theory including understanding and measuring electrical parameters. The control aspect includes interfacing of inputs (sensors) and outputs (actuators) with microcontrollers within a given design context. This requires learning about both the electronic components involved and the programming required to make the projects operate.</p> <p>Assessment can be a combination of Achievement Standards and Unit Standards.</p> <p>Internal Assessments: To be confirmed</p> <p>External Assessments: To be confirmed</p> <p>Course Cost: \$65</p> <p>Endorseable: Yes</p> <p>Internal Credits: 21</p> <p>External Credits: 4</p> <p>Level of Credits: 1 and 2</p> <p>Leads to: Year 12 Electronics and Mechatronics</p>	<p>Course Information:</p> <p>Year 12 Electronics and Control Tech is a course developed from the Digital Technology Curriculum.</p> <p>There are three main learning and assessment tasks. We look at basic electronic systems. Building simple circuits from schematics and how to select appropriate values for these components. The main project will be a circuit designed by the student to fit the requirements of a brief and will involve assessment on prototyping including material component and process choices. Designing appropriate sensor and actuator subcircuits. Building and programming a microprocessor based electronic product.</p> <p>There is also an external assessment that will take the form of a written report. This will in part, be researched and written in class time but it is expected there will be input into this at home as well.</p> <p>Internal Assessments: AS9894 Make an advanced electronic outcome AS91357 Make and trial a prototype US18241 Basic electronic systems</p> <p>External Assessments: AS91363 Sustainability in design</p> <p>Course Cost: \$65</p> <p>Endorseable: Yes</p> <p>Internal Credits: 18</p> <p>External Credits: 4</p> <p>Level of Credits: 2</p> <p>Leads to: Year 13 Product Design or Mechatronics</p>	

ENGINEERING

Mr Place - Room 77

Year 11 Engineering [11TEM]	Year 12 Engineering [12TEM]	Year 13 Engineering [13TEM]
<p>Prerequisites:</p> <p>Demonstrate safe work practices in Year 10. Previous study of TMH is beneficial.</p>	<p>Prerequisites:</p> <p>14 Credits in Year 11 Engineering or HOF approval.</p>	<p>Prerequisites:</p> <p>12 Credits in Year 12 Engineering or HOF approval.</p>
<p>Course Information:</p> <p>This course provides an introduction to mechanical engineering. It has been developed for secondary school students interested in mechanical engineering or wishing to pursue careers in maintenance and general engineering, marine and fabrication engineering or machining and tool making.</p> <p>The course covers Health and Safety in the workshop, hand and machine tool use. It is intended to provide students with a well-balanced, practically based course.</p> <p>Internal Assessments Level 1: US22923 Supervised machinery use US22926 Health and safety</p> <p>Internal Assessments Level 2: US32053 Perform machining operations</p> <p>Course Cost: \$60</p> <p>Endorseable: No</p> <p>Internal Credits: 21</p> <p>External Credits: 0</p> <p>Level of Credits: 1 and 2</p> <p>Leads to: 12 Engineering</p>	<p>Course Information:</p> <p>Students in this class will undertake a course of study based in Mechanical Engineering Unit Standards. The course will involve welding, fabrication, machining and general engineering skills.</p> <p>This course provides Sector Related credits towards the Manufacturing and Technology Vocational Pathway endorsement.</p> <p>Students from this course will have the opportunity of being selected for the Gateway Industrial Training course.</p> <p>Internal Assessments Level 2: US32055 Fabrication</p> <p>Internal Assessments Level 3: US32054 Machining</p> <p>Course Cost: \$70</p> <p>Endorseable: No</p> <p>Internal Credits: 14</p> <p>External Credits: 0</p> <p>Level of Credits: 2 and 3</p> <p>Leads to: 13 Engineering - 13 Product Design</p>	<p>Course Information:</p> <p>Students in this class will undertake a course of study based in engineering Unit Standards and Achievement Standards. The course will involve welding, fabrication, general engineering skills and CNC.</p> <p>Students from this course will have the opportunity of being selected for the Gateway Industrial Training course.</p> <p>Internal Assessments: Selected from: AS91620 Mechanical assembly AS91622 CNC US2436 CAD drawing - 3D</p> <p>Course Cost: \$80</p> <p>Endorseable: Optional</p> <p>Internal Credits: 15</p> <p>External Credits: 4 (with optional external)</p> <p>Level of Credits: 3</p>

FASHION DESIGN

Ms Ferguson - Room 70A

Year 11 Fashion Design [11TFD]	Year 12 Fashion Design [12TFD]	Year 13 Fashion Design [13TFD]
Prerequisites: Previous study of 10TFD would be beneficial.	Prerequisites: Year 11 Fabrics or TIC approval.	Prerequisites: Year 12 Technology in Fashion. Prior TIC approval.
<p>Course Information:</p> <p>Students will develop skills and knowledge through the design and creation of clothing and textile articles. They will explore the textile and Fashion industry and discover both positive and negative effects it has on our environment and society.</p> <p>Students will follow an established design process to create textile outcomes. This will involve students trialling a variety of different techniques and processes while developing a range machine skills and applied design skills to produce original creative textile items.</p> <p>Internal Assessments: To be confirmed</p> <p>Field Trip Costs: TBA</p> <p>Course Cost: \$25 + Material costs</p> <p>Endorseable: No</p> <p>Internal Credits: TBC</p> <p>External Credits: Nil</p> <p>Level of Credits: 1</p> <p>Leads to: 12 Fashion Design</p>	<p>Course Information:</p> <p>They will explore the Textiles and Fashion industry and realise both the positive and negative affects it has on our environment and society.</p> <p>Students will develop a garment for a chosen 'Fashion Victim', design and make a shirt and further their skills in formal sewing techniques and also explore creative design through fashion.</p> <p>Internal Assessments (3 of the following): AS91355 Planning tools AS91357 Make and trial a prototype AS91345 Make a garment with special features AS91350 Make advanced pattern adaptations</p> <p>Field Trip Costs: TBA</p> <p>Course Cost: \$25 + Material costs</p> <p>Endorseable: No</p> <p>Internal Credits: 20</p> <p>External Credits: 0</p> <p>Level of Credits: 2</p> <p>Leads to: 13 Fashion Design</p>	<p>Course Information:</p> <p>At Year 13, students work at Level 3, specialising in Fashion, Pattern drafting and sewing complex procedures.</p> <p>Internal Assessments: AS91621 Complex procedures AS91623 Textile art with applied design AS91626 Pattern drafting - design a garment</p> <p>Course Cost: \$25 + Material costs</p> <p>Endorseable: No</p> <p>Internal Credits: 16</p> <p>External Credits: 0</p> <p>Level of Credits: 3</p> <p>University Entrance Approved Examinable for Scholarship</p>

FOOD TECHNOLOGY

Mr Bromfield or Ms Hayes - Room 70

Year 11 Food Technology [11TFT]	Year 12 Food Technology [12TFT]	Year 13 Food Technology [13TFT]
Prerequisites: None. Previous study at Year 10 is beneficial. Study of 11 General Science is also beneficial.	Prerequisites: Minimum of 10 Credits in either 11TFT/11SCI. Successful study at 11HOS or with TIC Approval. Study of 12 General Science /Biology /Chemistry is beneficial for future study or career choice.	Prerequisites: Year 12 Technology in Food or Hospitality and Level 2 Literacy. Prior TIC approval.
Course Information: Food is a vital part of our daily lives and is essential for life. As our students become adults and have busy lives, it is easy to choose food which has already been prepared. This course aims to empower ākonga to acquire and apply knowledge of terminology and skills for fundamental cookery. Ākonga will also get the opportunity to trial and develop their own food product through combining ingredients within an authentic context. In this unit they will learn how to follow and create their own recipes, as well as substitute items and cooking methods as appropriate. Internal Assessments: AS92013 Product development US15892 Demonstrate knowledge External Assessment: AS92015 Demonstrate understanding of Materials Course Cost: \$170 Endorseable: No Internal Credits: 11 External Credits: 4 Level of Credits: 1 Leads to: 12 Food Technology	Course Information: Students investigate the interesting and varied world of the Food Industry. Whilst gaining literacy credits and building a repertoire of practical skills – students will evaluate sustainable food related practices, before implementing advance procedures to create a specified product. The major unit of work for the year is to develop, test, trial and evaluate their own food product and ingredient suitability for today’s consumer. Internal Assessments selected from: AS91302 Evaluate sustainable food related practices AS91351 Advanced procedures AS91357 Product development US20666 Food safety External Assessment: AS91359 Material evaluation Course Cost: \$170 Endorseable: Yes Internal Credits: 17 External Credits: 4 Level of Credits: 2 Leads to: 13 Food Technology 13 Product Design	Course Information: At first, the budding food technologists will perform complex procedures to create a specified product. Secondly, they will embark on their major project. Through research, brief development and functional modelling the students will aim to develop their own prototype of a food product for potential consumers – whilst seeking feedback from industry experts. Internal Assessments selected from: AS91643 Implement complex procedures AS91608 Brief development AS91611 Develop a prototype External Assessments: AS91612 Understanding of technological modelling Course Cost: \$170 Endorseable: Yes Internal Credits: 16 External Credits: 4 Level of Credits: 3 University Entrance Approved Examinable for Scholarship

HOSPITALITY

Mr Bromfield or Ms Hayes - Room 78

Year 11 Hospitality [11HOS]	Year 12 Hospitality [12HOS]	Year 13 Hospitality [13HOS]
Prerequisites: Good levels of written English are required as this course has practical and theory components. A responsible attitude and a safe work ethic are essential.	Prerequisites: Priority will be given to students who have studied Year 11 HOS and Year 11 TFT or with approval of the TIC.	Prerequisites: Completed L2 HOS and/or L2 TFT or have relevant industry experience (work experience/part time job etc). Students must have US167 or US20666.
Course Information: This is an industry focused course where students can build a career in Hospitality. It aims to provide students with skills in cookery. Upon successful completion of the course, students will be awarded two Certificates of Achievement in Hospitality. Students also gain credits which count towards NCEA Level 1 and can count credits towards the National Certificate in Hospitality (Foundation skills) (Level 1). Internal Assessments selected from: US15900 Meat US15901 Fruit and vegetables US19770 Egg and cheese US15921 Cake, sponges and scones US15920 Sauce and soup US15919 Hot finger food US20159 Knife care US21058 Career pathways Course Cost: \$170	Course Information: A career in Hospitality can take you as far as you want to go, across the country or around the world. The skills you learn in this course can be used in any kitchen. Upon successful completion of the course, students will be awarded two Certificates of Achievement in Hospitality. Students also gain credits which count towards NCEA Level 2 and can count credits towards the National Certificate in Hospitality (Introductory Cookery) (Level 2). Internal Assessments selected from: US167 Food safety methods US13285 Handle knives US13276 Cook by grilling US13283 Salads US13281 Sandwiches US13271 Frying US22234 International dishes US13278 Roasting US13280 Fruit and vegetables US1272 Cook by baking Course Cost: \$170	Course Information: This course is assessed using industry based Unit Standards in a realistic commercial environment. Students will be expected to participate in catering activities which sometimes requires them to work through interval, lunchtime, before and after school to gain work experience and some practical assessment credits. There will be one compulsory two hour practical cookery lesson each week, which will be either during lunchtime, study period or after school. Internal Assessments selected from: US13331 Pickles, chutney's and preserves US17284 Coffee origin US17288 Espresso coffee US13282 Complex sandwiches US18497 Culinary products and terms US13316 Basic pasta dishes US13343 Nutrition in catering Course Cost: \$170
<i>If fees are unpaid or no arrangements for payment made by the end of Term One, students will need to provide all their own food for weekly practical assessments. Students with special dietary requirements must provide their own food and course costs will be adjusted accordingly</i>		
Endorseable: No	Endorseable: No	Endorseable: No
Internal Credits: 20+	Internal Credits: 20+	Internal Credits: 20+
Level of Credits: 1	Level of Credits: 2	Level of Credits: 3
Leads to: 12 Hospitality	Leads to: 13 Hospitality	Leads to: Culinary Arts

GRAPHICS / DVC

Mr Dodds - Room 75

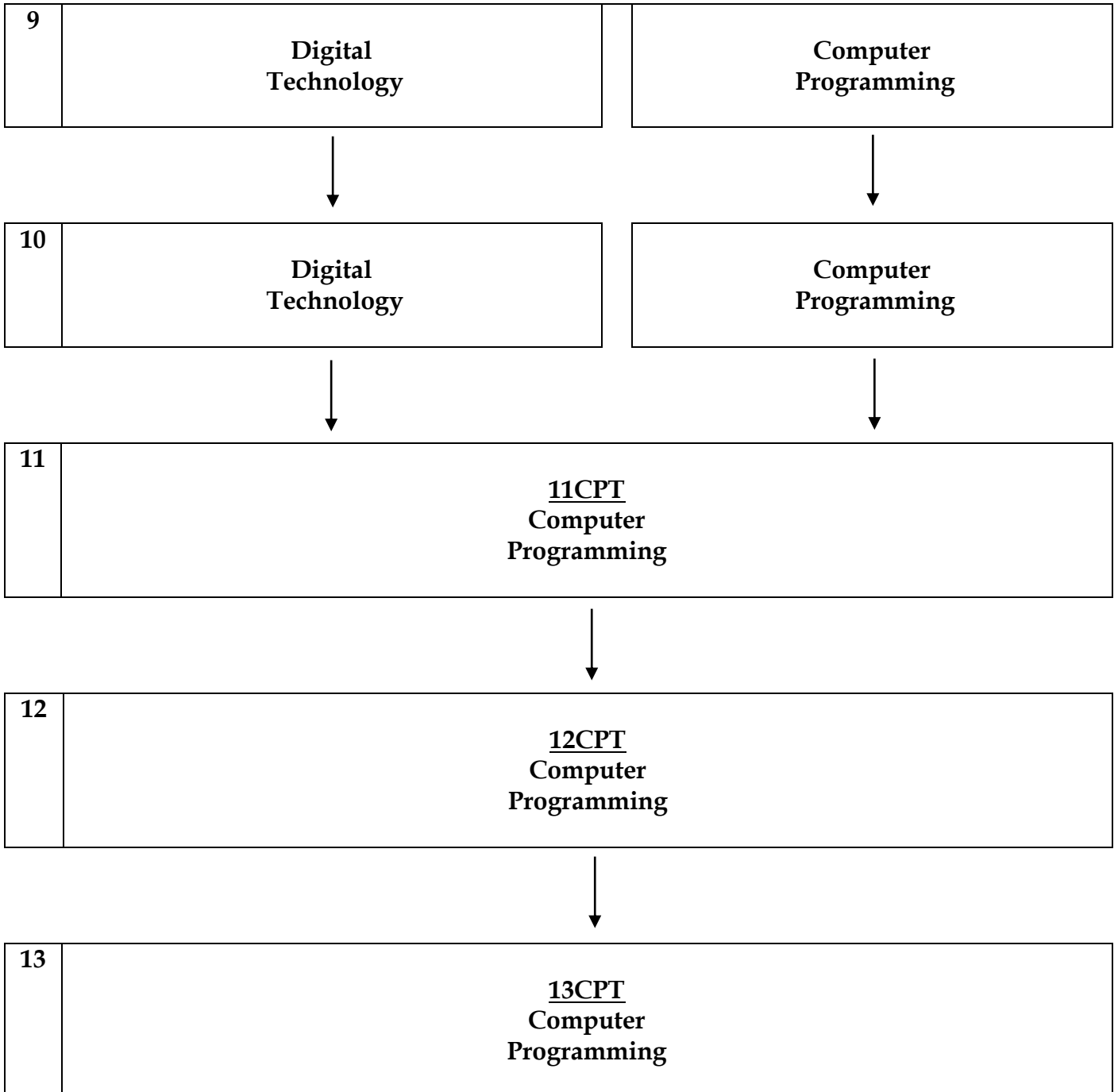
<p align="center">Year 11 Graphics [11GDS]</p>	<p align="center">Year 12 Graphics [12GDS]</p>	<p align="center">Year 13 Graphics [13GDS]</p>
<p>Prerequisites:</p> <p>Not Applicable. Preferable to have completed Year 10 Graphics.</p>	<p>Prerequisites:</p> <p>12 Credits at Year 11 Graphics or by TIC Permission.</p>	<p>Prerequisites:</p> <p>12 Credits at Year 12 Graphics or by TIC Permission.</p>
<p>Course Information:</p> <p>In this course students will be given a range of design problems to solve. Each of the problems will challenge student's design thinking whilst helping them to develop their visual communication skills. Design problems range from packaging to architecture design.</p> <p>Visual communication skills covered in Year 11 are:</p> <ul style="list-style-type: none"> • Freehand sketching/ideation • Instrumental drawing • Modelling • Rendering/shading • Computer aided design (CAD) <p>This course covers knowledge and skills from a wide range of design contexts and supports other technology subjects such as Product Design, Building and Engineering. (Note: there are no exams in this subject.)</p> <p>Internal Assessments: To be confirmed</p> <p>External Assessments: To be confirmed</p> <p>Endorseable: Yes</p> <p>Internal Credits: 9</p> <p>External Credits: 9</p> <p>Level of Credits: 1</p> <p>Leads to: 12 Graphics</p>	<p>Course Information:</p> <p>In this course students focus on solving one design problem for the whole of the first semester. The design problem could be either architectural or a product design.</p> <p>Students build on the techniques and knowledge learnt in Year 11 to produce a portfolio of work that demonstrates their design thinking as well as their visual communication skills.</p> <p>In semester two, students focus their attention on the external standards. (Note: there are no exams in this subject.)</p> <p>Internal Assessments: AS91341 Develop a spatial design OR AS91342 Develop a product design</p> <p>External Assessments: AS91337 Visual communication AS91338 Produce working drawings AS91339 Instrumental perspective AS91627 Initiate design ideas (Level 3)</p> <p>Endorseable: Yes</p> <p>Internal Credits: 6</p> <p>External Credits: 14</p> <p>Level of Credits: 2 and 3</p> <p>Leads to: 13 Graphics</p>	<p>Course Information:</p> <p>In this course students focus on solving one design problem for the whole of the first semester. The design problem could be either architectural or a product design.</p> <p>Graphics/DVC at this level requires students to demonstrate a higher depth of thinking, research and visual communication than in previous years.</p> <p>In semester two students focus on completing their external standards. (Note: there are no exams in this subject.). Once the external standards are complete students are invited to design an exhibit to show off the design solution they developed in semester 1.</p> <p>Internal Assessments: AS91628 Exhibit a design outcome OR AS91629 Resolve a spatial design OR AS91630 Resolve a product design</p> <p>External Assessments: AS91627 Initiate design ideas AS91631 Produce working drawings</p> <p>Endorseable: Yes</p> <p>Internal Credits: 12</p> <p>External Credits: 10</p> <p>Level of Credits: 3</p> <p>University Entrance Approved Examinable for Scholarship</p>

MECHATRONICS

Mr Place - Room 74/75

	Year 12 Mechatronics [12TMT]	Year 13 Mechatronics [13TMT]
	<p>Prerequisites:</p> <p>By application. Students must be taking Mathematics and Physics.</p>	<p>Prerequisites:</p> <p>12TMT preferred but not essential. By application. Students should also be taking Calculus/Statistics and Physics.</p>
	<p>Course Information:</p> <p>Mechatronics unites the principles of engineering disciplines, including mechanical, electronics, programming and design skills. This is a collaborative class in which the students will design, build and programme their robot. The course provides Sector Related credits towards the Manufacturing and Technology Vocational Pathway endorsement.</p> <p>Mechatronics is an Academy class (see page 6 AWVA Academies) and as such will run from 2.00pm - 6.00pm on a Wednesday afternoon. As an Academy we must provide a tertiary component. We have developed a strong working partnership with the Engineering faculty at AUT, this allows our students to enrol in one of their papers. This will run in Term 3.</p> <p>Internal Assessments: Selected from: AS91355 Project management AS92348 Understanding frameworks AS91357 Prototyping AS91344 Mechanical construction AS91375 Advanced interfacing</p> <p>External Assessments (selection from): AS91338 Working drawings AS91360 Demonstrate understanding of redundancy and reliability</p> <p>Course Cost: \$0</p> <p>Endorseable: Yes</p> <p>Internal Credits: 18</p> <p>External Credits: 4</p> <p>Level of Credits: 2</p> <p>Leads to: 13 Mechatronics</p>	<p>Course Information:</p> <p>The focus of the Level 3 mechatronics course is to prepare students for engineering at a tertiary level through project based, contextualised learning across the multiple areas of Technology.</p> <p>Students will compete in the Evolocity electric vehicle competition.</p> <p>Internal Assessments: AS91609 Project Management AS91611 Prototyping AS91620 Mechanical assembly</p> <p>External Assessments: AS91617 Product critique</p> <p>Course Cost: \$0</p> <p>Endorseable: Yes</p> <p>Internal Credits: TBC</p> <p>External Credits: TBC</p> <p>Level of Credits: 3</p> <p>University Entrance Approved Examinable for Scholarship</p>

DIGITAL TECHNOLOGY COURSE PATHWAYS



DIGITAL TECHNOLOGIES

Computer Programming

Mr Barrie Room 68	Mr Barrie Room 68	Mr Barrie Room 68
Year 11 Computer Programming [11CPT]	Year 12 Computer Programming [12CPT]	Year 13 Computer Programming [13CPT]
Prerequisites: Y10 CPT or some ability in logical thinking and or programming experience	Prerequisites: 11CPT or by approval of TIC	Prerequisites: Year 12 CPT
<p>Course Information:</p> <p>Students will get the opportunity to explore a selection of different software to develop their own programmes. This may include computer game design and creation or application development.</p> <p>Students will also have the opportunity to look at aspects of computer programming including project management.</p> <p>Students will consider the impact of computing on society and relevant implications.</p> <p>Internal Assessments: AS92004 Create a computer programme AS02005 Develop a digital technologies outcome</p> <p>External Assessments: AS92007 Design a digital technologies outcome</p> <p>Endorseable: Yes</p> <p>Internal Credits: 10</p> <p>External Credits: 5</p> <p>Level of Credits: 1</p> <p>Leads to: 12 Computer Programming.</p>	<p>Course Information:</p> <p>Students will continue to work with software packages with a key focus on programming. These programming elements will include HTML web design and Python software development.</p> <p>The course will follow a technological project based curriculum introducing ethics and future trends in computers.</p> <p>Internal Assessments: AS91893 Advanced digital media outcome AS91896 Advanced computer program AS91897 Advanced iterative processes</p> <p>External Assessments: AS91898 Computer science: AI</p> <p>Endorseable: Yes</p> <p>Internal Credits: 16</p> <p>External Credits: 3</p> <p>Level of Credits: 2</p> <p>Leads to: 13 Computer Programming</p>	<p>Course Information:</p> <p>A challenging multi-disciplinary course that explores complex Computer Science. Students will explore problem solving and project management skills to address the brief. Students will learn a complex level of Computer Programming that is geared towards Software Engineering and Web Development. This course provides students with the opportunity to develop their hands on technological skills and coding to promote a level of independent, creative thinking.</p> <p>Internal Assessments: AS91903 Use complex techniques to develop a digital media outcome AS91906 Complex computer program AS91907 Complex iterative processes</p> <p>External Assessments: AS91613 Material development *W</p> <p><i>(Optional)</i> AS91908 Computer science FSA</p> <p>Endorseable: Yes</p> <p>Internal Credits: 16</p> <p>External Credits: 7</p> <p>Level of Credits: 3</p> <p>University Entrance Approved Examinable by Scholarship</p>

EARLY CHILDHOOD EDUCATION

Miss Simpson - Room P3

	<p style="text-align: center;">Year 12 Early Childhood [12ECE]</p>	<p style="text-align: center;">Year 13 Early Childhood [13ECE]</p>
	<p>Prerequisites:</p> <p>Good levels of written English and an interest in Early Childhood Education.</p>	<p>Prerequisites:</p> <p>An interest in Early Childhood Education. In consultation with the Teacher in Charge. Year 12ECE an advantage. <i>Students must be able to work at Level Three and have a good level of written English.</i></p>
	<p>Course Information:</p> <p>Assessments in this course are provided through Plunket.</p> <p>Early Childhood Education is an excellent vehicle for learning many life skills. Students learn about themselves, relationships with others, develop their view of children, develop listening, communication and relationship skills. Early Childhood Education helps students to form connections with communities outside of school. Upon successful completion of this course, students will be able to count credits towards NCEA Level 2.</p> <p>Any course costs incurred will be advised and a voluntary contribution will be asked for.</p> <p>Internal Assessments: US29852 Basic needs and nutrition US29854 Hygiene and safety US29857 Learning and development US29858 Play experiences US29861 Support services</p> <p>Field Trip Costs:</p> <p>Course Cost:</p> <p>Endorseable: No</p> <p>Internal Credits: 19</p> <p>External Credits: 0</p> <p>Level of Credits: 2</p> <p>Leads to: 13 Early Childhood Education</p>	<p>Course Information:</p> <p>Assessments in this course are provided through Plunket.</p> <p>Upon successful completion of this course, students will be able to count credits towards NCEA Level 3.</p> <p>This course is ideal for anyone who is interested in ECE as a career, teaching or anything to do with children.</p> <p>Any course costs incurred will be advised and a voluntary contribution will be asked for.</p> <p>Internal Assessments: US10019 Safety US10026 Learning and development US29865 Health and wellbeing US29868 Professional behaviour and wellbeing</p> <p>Field Trip Costs:</p> <p>Course Cost:</p> <p>Endorseable: No</p> <p>Internal Credits: 19</p> <p>External Credits: 0</p> <p>Level of Credits: 3</p>

GATEWAY

Ms Farrar - Administration

**Year 12 / 13
Gateway [12GTW]**

Prerequisites:

NCEA Level 1 Achieved.

Students need to be work ready - responsible, reliable, show initiative, able to organise own transport to and from work placement, clear idea of the industry they are interested in exploring, able to work independently, excellent time management skills and have an excellent attendance record.

Course Information:

This is a programme for students who are mature and “work ready” who want to experience a realistic work placement or investigate their prospective career of choice.

Students will gain work skills relevant to their industry choice whilst on work placement. Students will also be given the opportunity to gain their 1st Aid and Health and Safety Certificates. Trades students will also be given the opportunity to gain their Site Safe Certificate.

Placements offered include: Hairdressing, Make Up, Barbering (Cut Above); Retail (The Warehouse, Mitre 10, Countdown); Hospitality (McDonalds), Travel and Tourism (Flight Attending etc); Trades - Building, Electrical, Plumbing - Trades students must have their NZ Restricted Driver’s Licence; Early Childhood Education and others on request.

Transport - students are responsible for any transport costs relating to getting to and from their work / course placements - this will vary for each student.

Endorseable: No

Internal Credits: Varies

Industry Credits: Varies depending on industry choice

Level of Credits: Mostly Level 2 but some Industry Based Credits are at Level 3.

POLICE AND UNIFORMED SERVICES PREP COURSE

Mr Mataia - Physical Education Office / Sports Hall

	<p>Year 13 Police and Uniformed Services Prep Course [13USP]</p>	
	<p>Prerequisites:</p> <p>NCEA Level 1 with a minimum of 10 credits each for Mathematics and English.</p> <p>Approval from the selection panel.</p> <p>Students need to be reliable, responsible and have a proven history of having good character. A driver's licence is an advantage but not essential and a strong desire to serve their community in various capacities is a must.</p>	
	<p>Course Information:</p> <p>This is a course primarily designed for students who wish to join either the New Zealand Police or a uniformed service of some description. It is a course where the content is directly linked to the Police and uniformed services, so students who take this course will gain the skill set to succeed in entering into the aforementioned vocations. Some core values in these services that students must adhere to include:</p> <p>Professionalism, respect, integrity, commitment to Maori and the Treaty, empathy and valuing diversity. This course is closely linked with Unitec and the New Zealand Police, so therefore has significant mana in the wider community.</p> <p>Internal Assessments: US1296 Interview in informal situations US1297 Conduct an interview in a formal situation US4251 Plan a career pathway US9681 Contribute within a team or group which has an objective US11907 Listen actively to gain information in an active setting US3491 Write a report</p>	
	<p>Endorseable: No</p> <p>Internal Credits: 21</p> <p>External Credits: 0</p> <p>Level of Credits: 3 and 4</p>	

SKILL PATHWAYS

Mr Jefferies - Room C4

Year 11 Skill Pathways [11SKP]	Year 12 Skill Pathways [12SKP]	Year 13 Skill Pathways [13SKP]
<p>Prerequisites:</p> <p>None. Course intended for students on the Workplace or vocational training pathway</p>	<p>Prerequisites:</p> <p>None. Course intended for students on the Workplace or vocational training pathway</p>	<p>Prerequisites:</p> <p>None. Course intended for students on the Workplace or vocational training pathway</p>
<p>Course Information:</p> <p>This course is designed to provide support for students who may experience difficulty with academic subjects at NCEA level.</p> <p>The emphasis is on cooperation rather than competition, on negotiation between students and tutors, and on rewarding achievement.</p> <p>The course is based around the key competencies of the national curriculum and enables students to have an increased sense of ownership and control of their own learning to raise levels of motivation, achievement and self-esteem.</p> <p>Students manage themselves, set targets, solve problems and work with others. Students also gain skills and qualifications to prepare for employment.</p> <p>Selected Year 12 and 13 students have the opportunity to attend a First Aid Programme – an external provider comes in and runs a two day programme at Rutherford College. Selected students also are able to sit a Health and Safety Course (school based), and work site safe (passport construction).</p>		
<p>Internal Assessments: US497 Health and safety US504 Produce a CV US526 Community services US1978 Employment rights US3503 Group work US24709 Individual budget US28088 Credit and debt</p> <p>Endorseable: No</p> <p>Internal Credits: 20</p> <p>External Credits: 0</p> <p>Level of Credits: 1</p> <p>Leads to: 12 Skill Pathways or vocational training</p>	<p>Internal Assessments: US6400/6401/6402 First Aid US7117 Plan and learning styles US7118 Manage own learning US7121 Search and access skills US9677 Participate in a group US10781 Future directions US12352 Lineage, heritage & culture US12354 Legal implications of renting US12383 Explore career options US28093 Tertiary study funding options</p> <p>Endorseable: No</p> <p>Internal Credits: 20+</p> <p>External Credits: 0</p> <p>Level of Credits: 1 & 2</p> <p>Leads to: 13 Skill Pathways / Workplace or vocational training</p>	<p>Internal Assessments: US4251 Career pathway US28099 Analyse credit options US28100 Long term personal financial goal(s) US28104 External factors in personal finance</p> <p>Endorseable: No</p> <p>Internal Credits: 16+</p> <p>External Credits: 0</p> <p>Level of Credits: 1, 2 and 3</p> <p>Leads to: The workplace or vocational training</p>

VOCATIONAL ACADEMIES

Mrs McCarthy - Careers Department

The key differences between an academy and the traditional school subjects are:

1. Academy students may be taught collaboratively by both Secondary and Tertiary teachers.
2. Some time may be spent at school (including the other schools mentioned) and a tertiary campus.
3. Academies may have a work experience component integrated into the program.
4. There are a number of different academy timetables ranging from full time within the school day to also running outside of normal school hours, for example 2-6pm.
5. Students may attend an academy that is run by another school.
6. Students can choose any of the academies online in the Student Portal, as with other subjects, but will be required to have **an interview** to confirm placement in chosen academies.

The shared academies for 2024 are:

Automotive Levels 2 and 3

Building Level 3

Health Pathways Levels 2 and 3

Mechatronics Levels 2 and 3

Mahi-a-Toi Levels 1, 2 and 3

Academies to be administered by Rutherford College:

Automotive Level 3 – see page 74

Mechatronics Level 2 and 3 – see page 66

Mahi-a-Toi Level 1, 2 and 3 – see page 56

Academy administered by Waitakere College:

Automotive Level 2 – see page 74

Academies administered by Pathways West:

Health Pathways Levels 2 and 3 – see page 75

Academies administered by Massey High School:

Building Level 3 – see Mrs McCarthy or Mr Greaney

AUTOMOTIVE ACADEMY

	<p style="text-align: center;">Level 2 Automotive Academy [12AAA] Waitakere College – Tuesdays 2.00pm – 6.00pm Unitec – Fridays 8.30am – 3.00pm</p>	<p style="text-align: center;">Level 3 Automotive Academy [13AAA] Unitec – 1 Day per week 8.30am – 3.00pm</p>
	<p>Prerequisites:</p> <p>By application. Students need excellent time management skills and a genuine interest in automotive mechanics. Students are required to complete an application and interview process to be considered for the Level 2 Automotive Academy.</p>	<p>Prerequisites:</p> <p>By application. Students need excellent time management skills and a genuine interest in automotive mechanics. Completion of Level 2 Automotive is an advantage. Students are required to complete an application and interview process to be considered for the Level 3 Automotive Academy.</p>
	<p>Course Information:</p> <p>Level 2 Automotive is an Academy class.</p> <p>Students are required to attend Automotive classes at Waitakere College one afternoon per week (2:00pm – 6:00pm) for Terms 1, 2 & 3.</p> <p>As Level 2 Automotive is an Academy class we must provide a tertiary component for the course. We have developed a strong working partnership with UNITEC, Mt Albert, this allows our students to enrol in their Level 2 Automotive Academy. Students will be required to attend UNITEC Automotive classes 1 day per week (8:30am – 3:00pm) during Terms 1, 2 & 3.</p> <p>Automotive Course includes theory and workshop practical work. Students will also be given the opportunity to gain their Site Safe qualification, First Aid Certificate and their Health & Safety Certificate as part of their Level 2 Automotive Academy course.</p> <p>Personal Protection Equipment – overalls, safety workboots, safety glasses and earmuffs will be provided for workshop work.</p> <p>Transport – transport will be provided to transport students to their classes at Waitakere College each week and to and from UNITEC each week.</p>	<p>Course Information:</p> <p>Level 3 Automotive is an Academy class.</p> <p>As Level 3 Automotive is an Academy class we must provide a tertiary component for the course. We have developed a strong working partnership with UNITEC, Mt Albert, this allows our students to enrol in their Level 3 Automotive Academy. Students will be required to attend UNITEC Automotive classes 1 day per week (8:30am – 3:00pm) during Terms 1 & 2.</p> <p>Automotive Course includes theory and workshop practical work. Students will also be given the opportunity to gain their Site Safe qualification, First Aid Certificate and their Health & Safety Certificate as part of their Level 3 Automotive Academy course.</p> <p>Personal Protection Equipment – overalls, safety workboots, safety glasses and earmuffs will be provided for workshop work.</p> <p>Transport – transport will be provided for students to their classes to and from UNITEC each week.</p>

HEALTH PATHWAYS

	<p style="text-align: center;">Level 2 Health Pathways [12AHA] Unitec - 1 Day per week 8.30am - 3.00pm</p>	<p style="text-align: center;">Level 3 Health Pathways [13AHA] Unitec - 1 Day per week 8.30am - 3.00pm</p>
	<p>Prerequisites:</p> <p>By application. Students need excellent time management skills and a genuine interest in further study/career in the Health Industry. Students should also be taking Level 2 Biology as one of their NCEA subjects at school. Students are required to complete an application and interview process to be considered for the Level 2 Health Pathways class.</p>	<p>Prerequisites:</p> <p>By application. Students need excellent time management skills and a genuine interest in further study/career in the Health Industry. Students should also be taking Level 2 or Level 3 Biology as one of their NCEA subjects at school. Completion of Level 2 Health Pathways is an advantage. Students are required to complete an application and interview process to be considered for the Level 3 Health Pathways class.</p>
	<p>Course Information:</p> <p>Level 2 Health Pathways students are required to attend Level 2 Health Pathways classes at UNITEC 1 day per week (8.30am - 3.00pm) for Terms 1, 2 & 3. We have developed a strong working partnership with UNITEC and this allows our students to enrol in their Level 2 Health Pathways classes at Unitec.</p> <p>Students will be given the opportunity to gain their First Aid Certificate as part of their Level 2 Health Pathways course.</p> <p>Transport will be provided for students to get to and from their UNITEC classes each week.</p>	<p>Course Information:</p> <p>Level 3 Health Pathways students are required to attend Level 3 Health Pathways classes at UNITEC 1 day per week (8:30am - 3:00pm) for Terms 1, 2 & 3. We have developed a strong working partnership with UNITEC and this allows our students to enrol in their Level 3 Health Pathways classes at their Mt Albert Campus.</p> <p>Students will be given the opportunity to gain their First Aid Certificate as part of their Level 3 Health Pathways course.</p> <p>Transport will be provided for students to get to and from their UNITEC classes each week.</p>

