

Sample Questions from the NCEA co-requisites

*Most of these large sharks live more than 250 years, with a recently found **specimen** achieving a grand age of 392!*

Which definition of 'specimen' is closest to how it is used in this sentence?

- a particular or peculiar kind of person
- a small amount of blood or urine used for testing
- an individual plant, animal, or mineral used for study
- an ideal or typical example of a category for display purposes

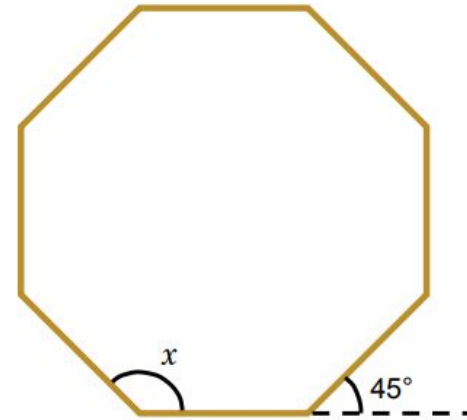


In the garden frame, all the internal angles (like x) are equal.

Each external (outside) angle measures 45° .

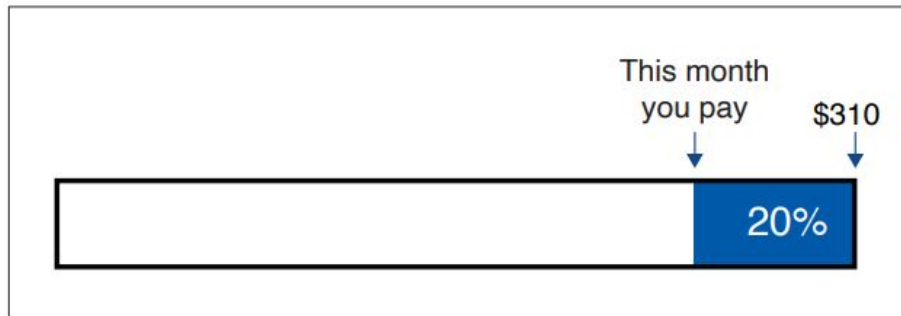
(b) How many degrees does each internal angle measure?

_____°



The usual price of the octagon-shaped garden frame is \$310.

This month you get 20% off the usual price.



(c) What is the price of the octagon-shaped garden frame this month?





Rutherford College

NCEA Evening

23 March 2026

Associate Principal Rozanne Donald
Principal's Nominee, Senior Academic Dean
Kevin Gilmore

What is NCEA?

National Certificate of Educational Achievement (NCEA) is the National Qualification for the majority of New Zealand Students at Secondary School.



What is NCEA?

The standard of work for each level matches the expected abilities of students in year 11, 12 and 13.

Year 11 – Level 1

Year 12 – Level 2

Year 13 - Level 3

Students are awarded grades of either:

Not Achieved (N), Achieved (A), Achieved with Merit (M), or Achieved with Excellence (E).



NCEA

University Entrance
14 credits
in three UE approved subjects

University Entrance (UE) Literacy
Literacy 5 Reading & 5 Writing

Level 1	Level 2	Level 3
NZ curriculum level 6	NZ curriculum level 7	NZ curriculum level 8
60 credits	60 credits	60 credits

Level 1 Literacy 10 credits
(reading 5 & writing 5)

Level 1 Numeracy 10 credits

Literacy and Numeracy Co-requisite

All Year 10 students have the opportunity to sit the Literacy and Numeracy co-requisite

- 10 credits of Literacy (2 exams: reading and Writing), and 10 Credits of Numeracy (1 exam).
- **2026 dates - Term 2 May 19-27 and Term 3 Sept 8-11**
- If students don't pass one or more of these tests they can re-sit them as they move through school.



How to help your student through NCEA?

- ❑ Prepare for Digital Assessment by providing a device (chromebook or laptop) if you can
- ❑ Make sure your student has logged in to NZQA and created an account for themselves
- ❑ Teach your child to plan ahead and be organised
- ❑ Teach your student to start using a calendar (digital or paper) - just use it!
- ❑ Encourage them to take the derived grade exams seriously. Sept 15-22
- ❑ Make use of Homework Centres **study.rutherford.school.nz**
- ❑ Know how attendance affects achievement



Special Assessment Conditions (SAC)

Students who have **specific barriers to achievement** can ask the school to apply for Special Assessment Conditions.

These may include:

- The use of a computer when handwriting is a barrier.
- The use of a reader for a student for whom reading is a barrier (Eg: dyslexia)
- The use of a writer for students who need to speak their answers out loud.
- Rest breaks for students with health conditions, or the likelihood of an anxiety attack.
- Additional time to support students who need longer to process information.
- Separate accommodation (anxiety, ADHD, Health concerns)



Special Assessment Conditions (SAC)

When the school applies for SAC, it is required to provide evidence to support the application.

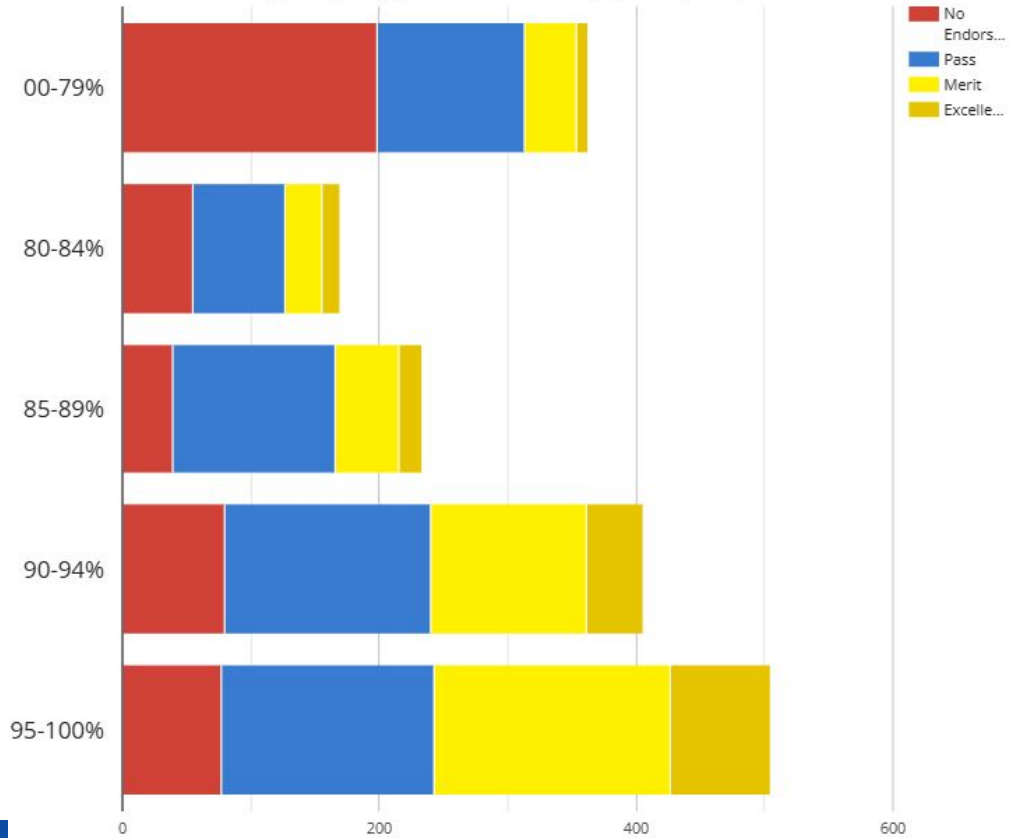
The following data is usually collected:

- Student interview
- Patoss writing assessment
- SAST spelling test
- YARC reading test
- Teacher and/or whanau information
- Learning history (including a previous diagnosis if relevant)

A psychologist's assessment is NOT necessary for SAC. We can administer all the tests we need.



2024 and 2025 NCEA Level 1/2/3 Pass Attending: 1 July, Year Level(s): 11, 12, 13

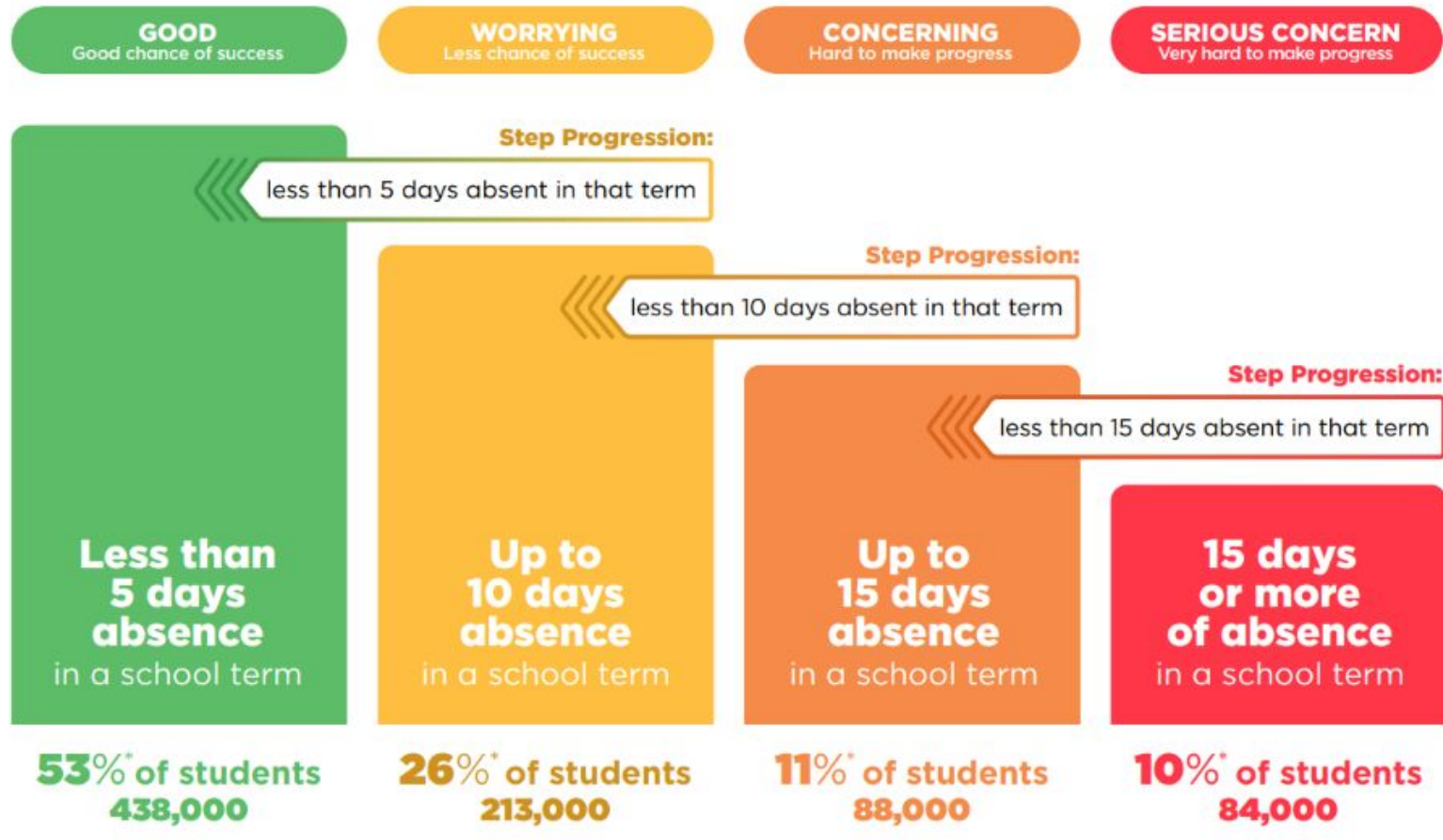


Attendance Matters

There is a clear relationship between attendance and achievement.



The Government's target is for **80%** of students to attend regularly, that is to attend school more than **90%** of the time.



NZQA Rules - Extensions and Missed Assessments

A missed assessment requires a **valid reason**, such as:

- Illness
- Bereavement
- High-level sport or cultural representation

If absence is known in advance:

- **Contact the school early** to arrange an extension

Not a valid reason:

- Holidays during term time

Important to understand:

- Term-time holidays are **unjustified absences (Ministry of Education)**
- Schools are **not required** to:
 - Reschedule assessments
 - Provide catch-up opportunities



Authenticity and AI

- The worst response to assessment pressure is **cheating or using AI inappropriately**
- To ensure work is genuine, students may be required to:
 - Complete work **in class only**
 - Submit a **handwritten draft**
 - Use a **secure exam platform**
 - Show **Google Docs history** (work created from scratch)
- As a school, we must **guarantee to NZQA** that all assessed work is the student's own



Authenticity and AI continued

If authenticity processes are **not followed**:

- The work **cannot be marked**
- This is **not an accusation**, but a lack of evidence of authenticity

We begin this from **Year 9** to build good habits early

Breaches at NCEA level can have serious consequences

Please:

- Talk with your child about authenticity
- Encourage them to **ask teachers if unsure**



Careers

The Careers Department offers students from Year 9 -13 a range of services:

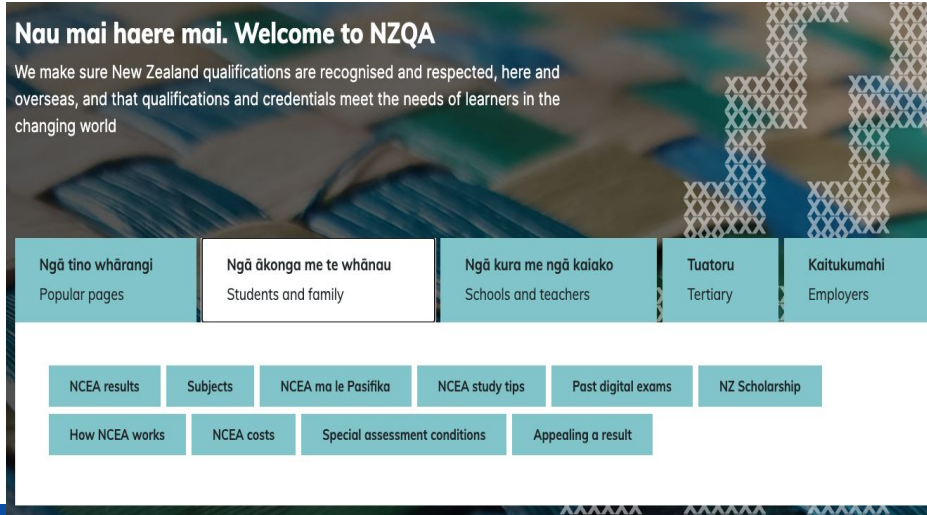
- One-on-one career conversations to discuss different career pathways and support the students to make career decisions.
- Help with tertiary applications for courses, scholarships and accommodation
- Assistance with subject selection
- Opportunities to learn about different careers via guest speakers
- Help with CV writing, job applications and interview skills
- Apprenticeship and work experience opportunities



Where to find more information

- [Nzqa.govt.nz](https://nzqa.govt.nz)
 - Understanding NCEA
 - Subject Resources Pages

study.rutherford.school.nz



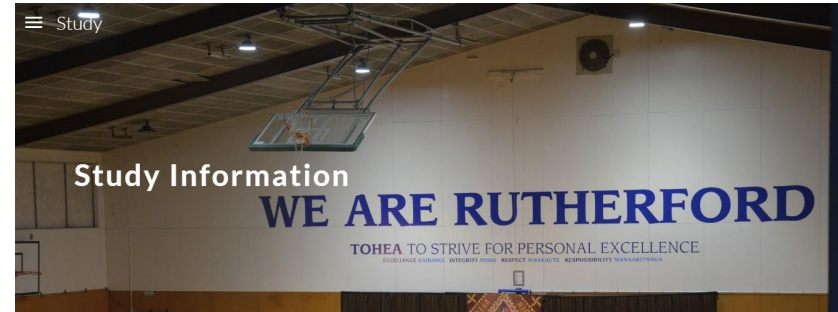
Nau mai haere mai. Welcome to NZQA

We make sure New Zealand qualifications are recognised and respected, here and overseas, and that qualifications and credentials meet the needs of learners in the changing world

Ngā tino whārangi Popular pages	Ngā ākonga me te whānau Students and family	Ngā kura me ngā kaiako Schools and teachers	Tuatoru Tertiary	Kaitukumahi Employers
------------------------------------	--	--	---------------------	--------------------------

NCEA results Subjects NCEA ma le Pasifika NCEA study tips Past digital exams NZ Scholarship

How NCEA works NCEA costs Special assessment conditions Appealing a result



Study Information

WE ARE RUTHERFORD

TOHEA TO STRIVE FOR PERSONAL EXCELLENCE
EXCELLENCE KAWARAU INTEGRITY PONO RESPECT WHAKAETE RESPONSIBILITY MANAKATANGA

[2024 NCEA Timetable](#) [Junior Exams Information](#)

First and Foremost

Look after yourself. Eat well and sleep well. Sleep is the best legal performance enhancing drug on the planet.



Questions?

- How NCEA works (basics)
- Credits, endorsements, and pathways
- Literacy and numeracy requirements
- Assessment processes and expectations
- Tracking progress and communication
- Subject choices and flexibility
- Supporting students at home
- Special circumstances and additional support

